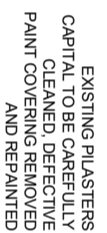
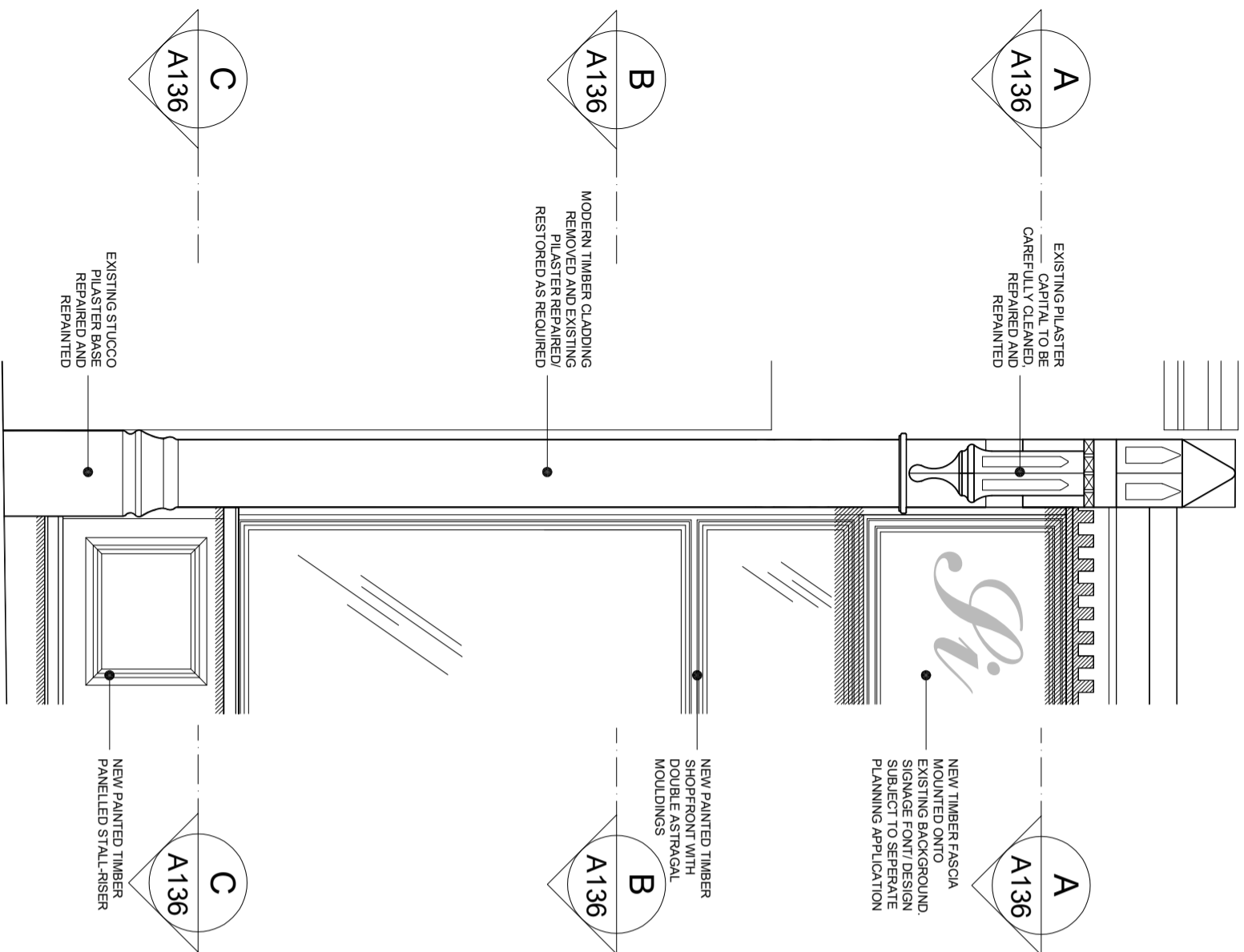


PLANNING REF 2016/6366/P - CONDITION 4b - SHOPFRONT DETAILS



EXISTING PILASTERS
CAPITAL TO BE CAREFULLY
CLEANED, DEFECTIVE
PAINT COVERING REMOVED
AND REPAINTED

- NEW PAINTED TIMBER FASCIA MOUNTED ONTO EXISTING BACKGROUND. SIGNAGE FONT/ DESIGN SUBJECT TO SEPERATE PLANNING APPLICATION
- NEW PAINTED TIMBER FASCIA WITH DOUBLE ASTRAGAL MOULDINGS

DETAIL A-A

SCALE 1:10

2

NEW PAINTED TIMBER STALL
RISER/ WINDOW BOARD SHOWN
BELOW

— NEW DISPLAY GLAZING

NEW PAINTED TIMBER
SHOPFRONT WITH
DOUBLE ASTRAGAL
MOULDINGS

MODERN TIMBER CLADDING
REMOVED AND EXISTING
PLASTER REPAIRED/
RESTORED AS REQUIRED

NEW PAINTED TIMBER SHOP
MULLIONS WITH CORNER
DETAILING

DETAIL B-B

SCALE 1:10

ω

BELOW

NEW DISPLAY GLAZING

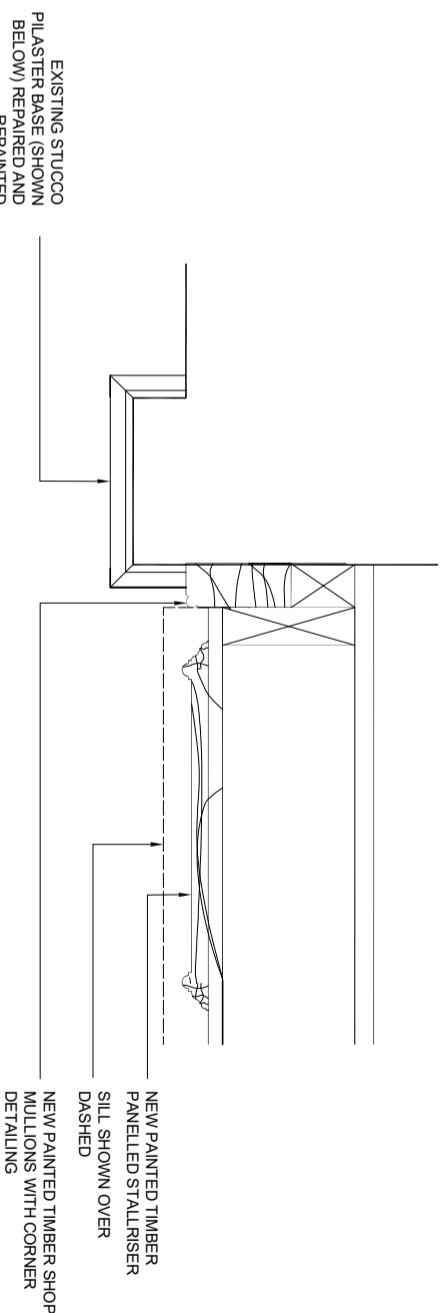
NEW PAINTED TIMBER SHOP WINDOW CILL

NEW PAINTED TIMBER SHOP
WINDOW CILL

— WINDOW CILL

NEW PAINTED TIMBER SHOP
WINDOW FRAME WITH DOUBLE
ASTRAGAL MOULDINGS

ASTRAGAL MOULDINGS



- NEW PAINTED TIMBER
PANELLED STALLRISER
- SILL SHOWN OVER
DASHED
- NEW PAINTED TIMBER SHOP
MULLIONS WITH CORNER
DETAILING

DETAILING

DETAILING

PART ELEVATION A

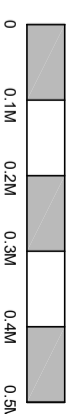
SCALE 1:20


DETAIL C-C

SCALE 1:10

4

SCALE 1:10 @A3



CLIENT: WHITE LION ESTATES LTD.	PROJECT : 72-80 LEATHER LANE LONDON, EC1N 7TR	1. DO NOT SCALE THIS DRAWING 2. ALL DIMENSIONS ARE TO BE VERIFIED ON SITE BY THE CONTRACTOR AND REPORTED TO THE ARCHITECT BEFORE CONSTRUCTION 3. ANY DISCREPANCY FOUND BETWEEN THIS DRAWING AND ANY OTHER DOCUMENT MUST BE REPORTED IMMEDIATELY TO THE ARCHITECT 4. REMOVE THIS DRAWING FROM CURRENCY WHEN A REVISED DRAWING IS ISSUED 5. COPYRIGHT OF THIS DRAWING REMAINS WITH HODGES ARCHITECTS LTD	NO	DATE	REVISION	DRAWING TITLE: CONDITION 4b SHOPFRONT DETAILS DETAIL SHEET 1			
DRAWN BY : NH	CHECKED BY : SH		DRAWING STATUS: PLANNING			SCALE: AS NOTED	DATE: 20.01.22	REV.:	A3
			PROJ. NO: 011	DWG NO: A136					
<div>HODGES ARCHITECTS LTD</div> <div>TEL: 07932 376 008 EMAIL: nh@hodgesarchitects.co.uk</div>									