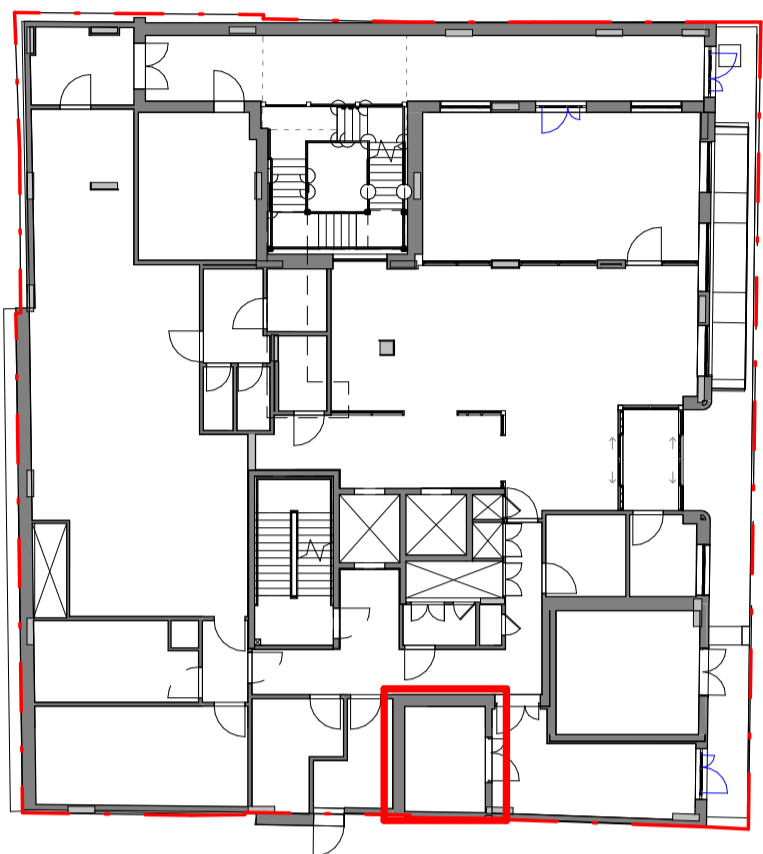
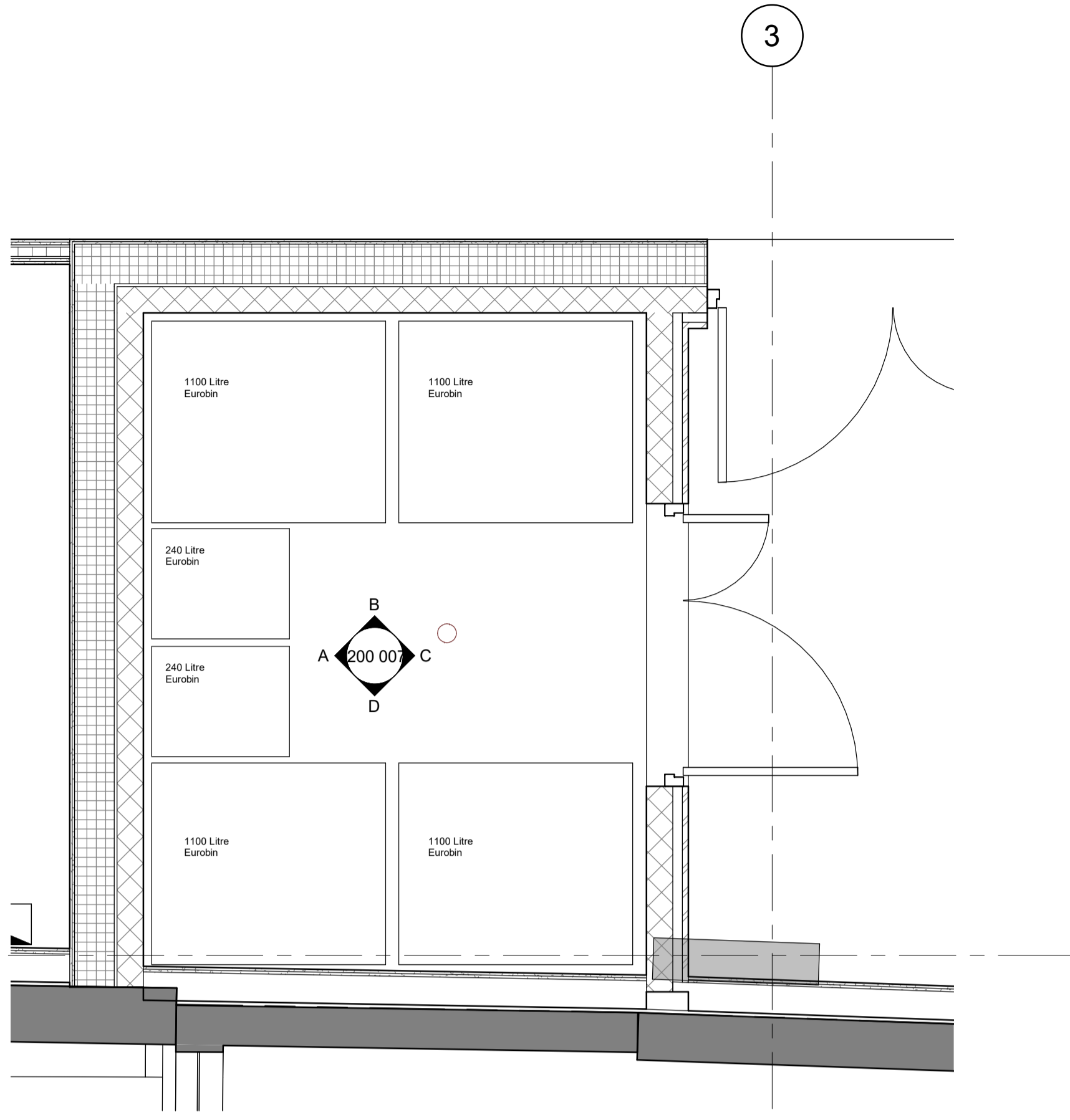


Copyright: All rights reserved. This drawing must not be reproduced without permission.
 Only the original drawing should be relied upon. Contractors, subcontractors and suppliers must verify all dimensions on site before commencing any work or making any shop drawings.
 All shop drawings to be submitted to the architect / interior designer for comment prior to fabrication.
 This drawing is to be read in conjunction with the architect's / interior designer's specification, bills of quantities / schedules, structural, mechanical & electrical drawings and all discrepancies are to be reported to the architect.
 Do not scale from this drawing. Dimensions are in millimetres unless otherwise stated.
 All fire related elements and items as set out within the Fire Engineer's Fire Strategy Report. Fire rating of elements / components require the certification from certified test bodies to be provided to both the Fire Engineer & Building Control for review and sign off, prior to procurement and installation.
 DMA will coordinate with all other consultants in relation to statutory items / elements under that consultants control. These items may be shown on DMA drawings for coordination purposes, however they remain under that consultants design and control.

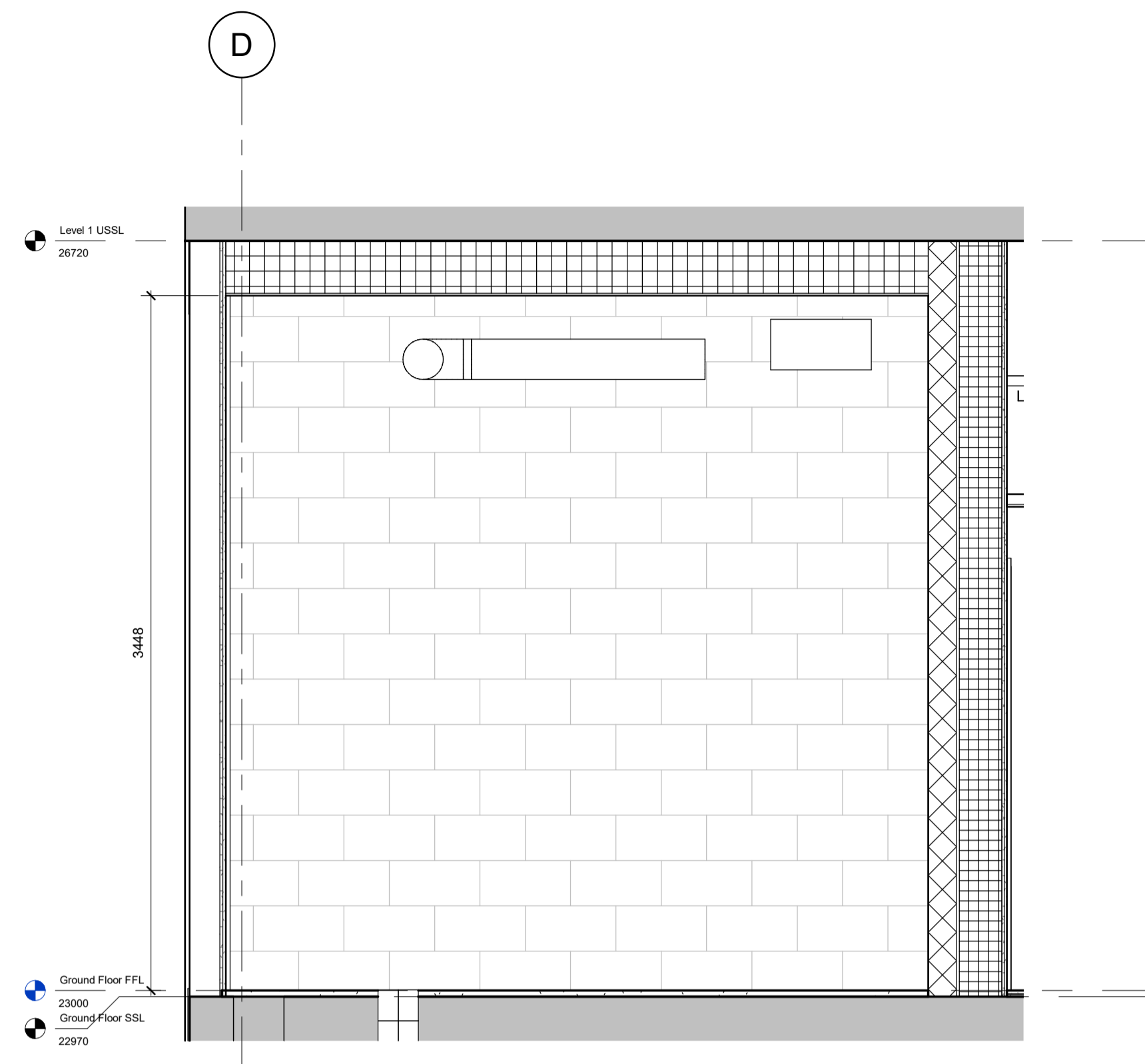
NOTES



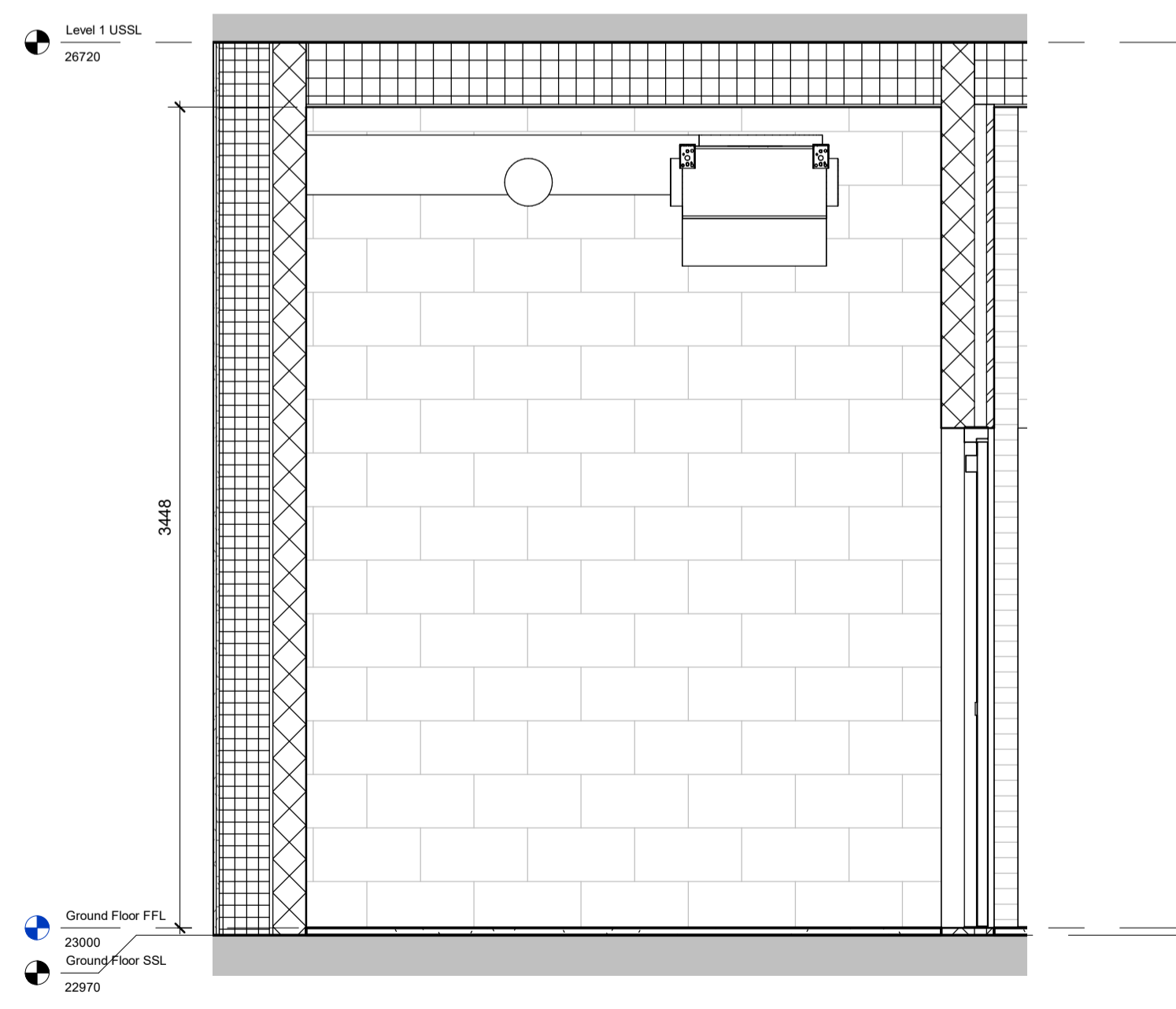
Key Plan - GF
1 : 250



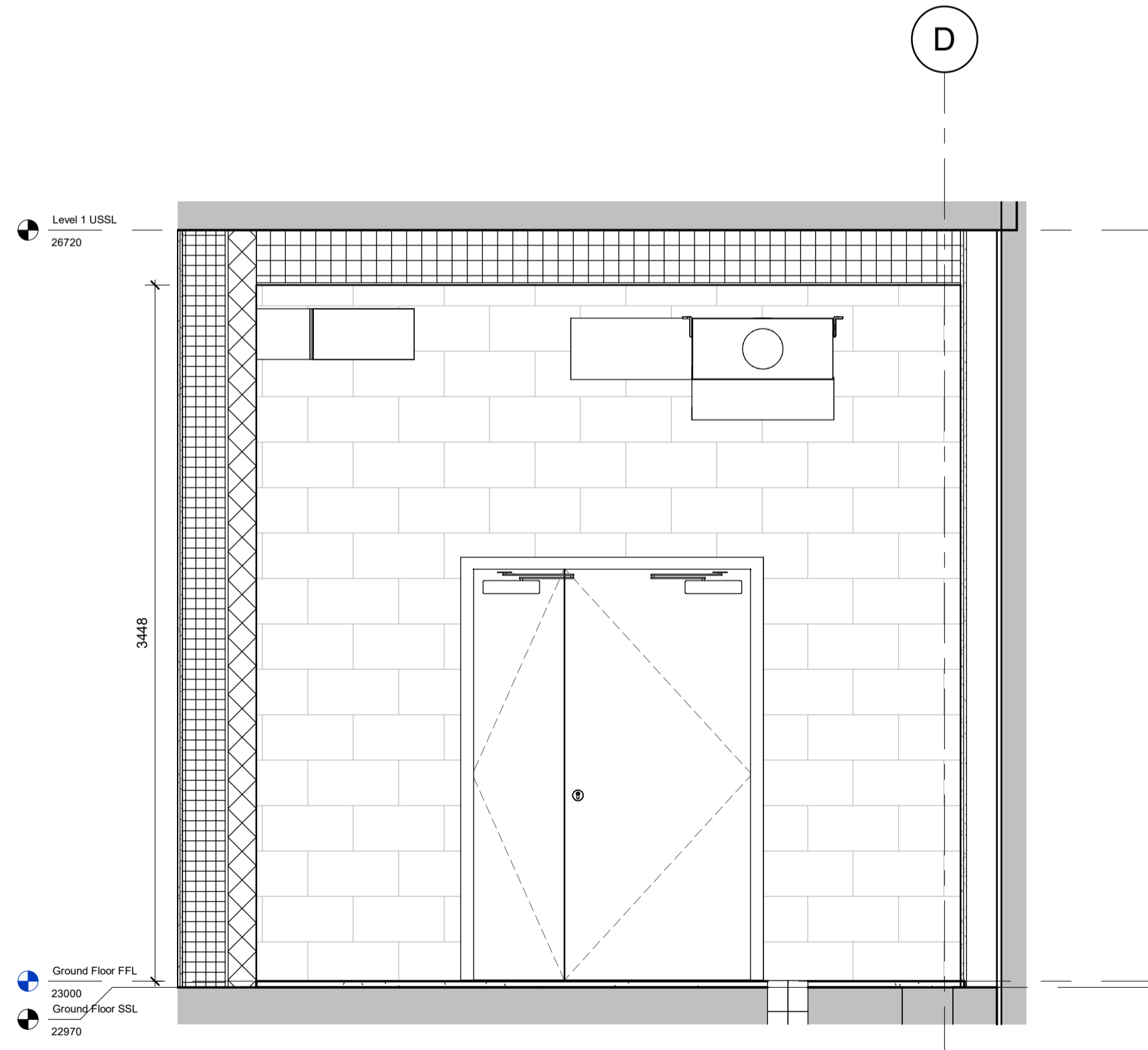
1 GF Refuse Store - Plan
1 : 25



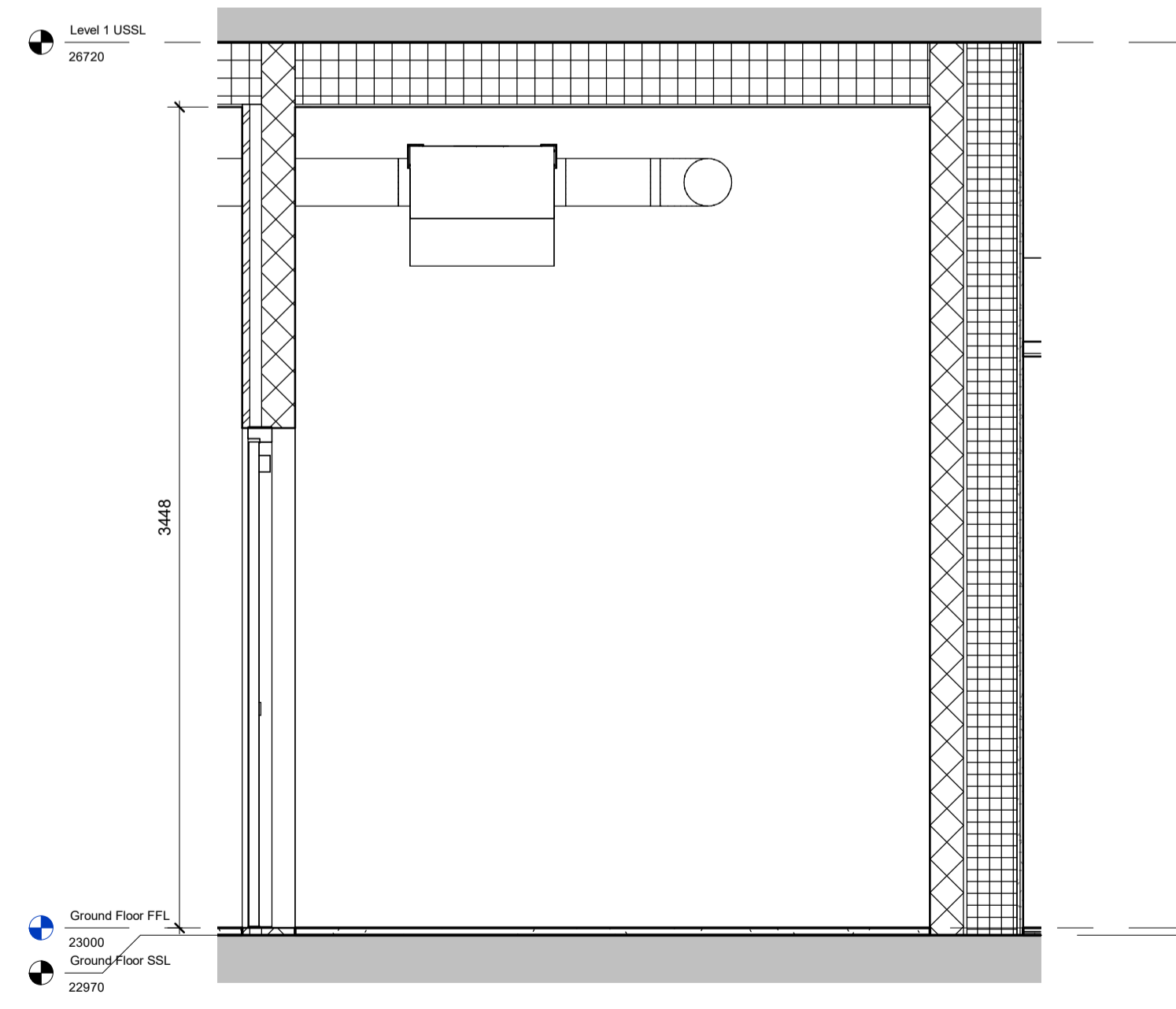
A Refuse Store - Elevation A
1 : 25



B Refuse Store - Elevation B
1 : 25



C Refuse Store - Elevation C
1 : 25



D Refuse Store - Elevation D
1 : 25

1	Planning Condition 5	22/10/21	JC3
rev	amendments	date	by
BST	DMA	XX	GF DR A 200 007

dexter moren associates
 architecture urban design interior design creative media
 www.dextermoren.com dma@dextermoren.com
 57d jamestown road london nw1 7db UK
 t: 020 7267 4440 f: 020 7267 6044

architecture
 project Bayham Street
 client Camden Lifestyle (UK) Ltd

drawing title		
BOH Areas - GF Refuse Store		
drawing purpose		
FOR PLANNING		
scale	date	drawn by
As indicated@A1	08/04/21	JC3
job no.	drawing no.	revision
1783	A - 200 007	P 1