



47 Darmouth Park Road, London, NW5 1SU  
Design and Access Statement

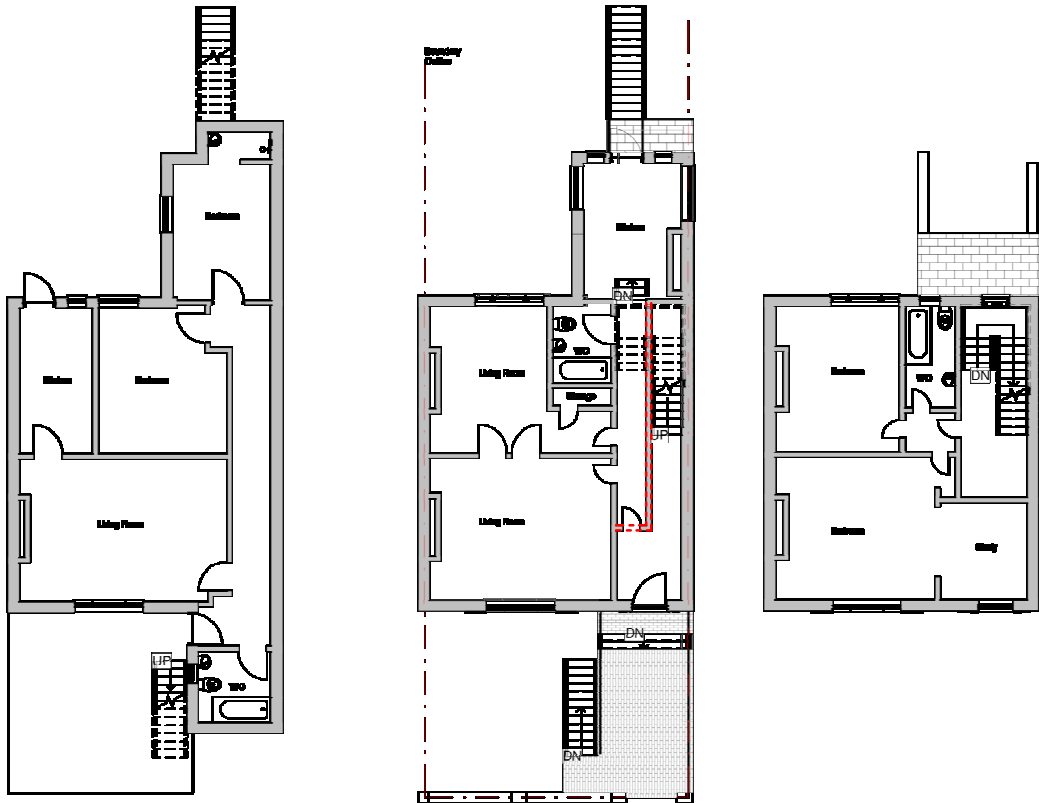


Site Aerial View.

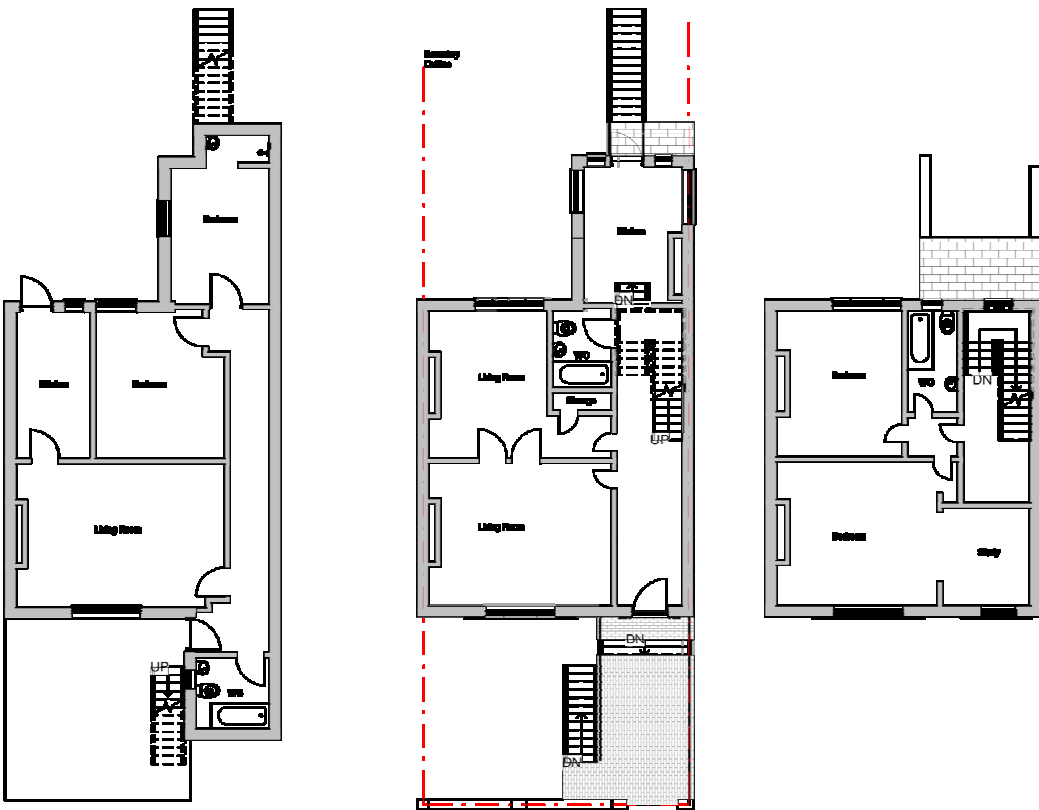
## Introduction:

This document has been prepared by Proficiency Design & Build to support a planning application package of information relating to a division of 4 self contained flats into 2 self contained flats at **47 Dartmouth Road, London NW5 1SU**.

The property is located at 47 Dartmouth Road, London and it falls inside of the Dartmouth Park Conservation Area.



Existing Plans.



Proposed Plans.

Division of 4 into 2 Self Contained Flats:

The intended development will divide 4 self contained flats into 2 self contained flats. One flat will be comprised in the basement being the remaining upper floors comprised into another flat. The division will consist on removing a partition wall at ground floor level opening the ground floor to the remaining upper floors.