

THE DRAWING AND THE WORKS DEPICTED ARE THE  
COPYRIGHT OF HAWORTH TOMPKINS LTD AND MAY  
NOT BE REPRODUCED EXCEPT BY WRITTEN  
PERMISSION.

TO BE READ IN CONJUNCTION WITH GA PLANS,  
SECTIONS AND ELEVATIONS.

 New wall

A - NEW EXTENSION

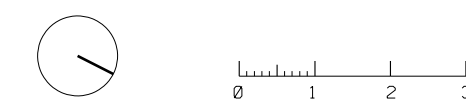
- A1 Extensive sedum green roof with 500mm ellipses 'pop up'
- A2 Loose gravel roof finish
- A3 Fixed, double glazed, PPC metal rooflights, with flashed upstair to existing walls
- A4 PPC aluminium coping to parapet
- A5 Precast concrete coping to parapet
- A6 Precast concrete banding to facade
- A7 PPC aluminium box gutters
- A8 Mansafe fall protection system
- A9 Brick facade with areas of corbelled and hit and miss detailing
- A10 PPC expanded metal mesh screen to conceal external MVHR unit and ductwork
- A11 PPC steel frame double glazed windows/doors
- A12 PPC aluminium 75mm round downpipe
- A13 Precast concrete escape stair and balcony with PPC steel balustrade railing and handrail

## B - EXISTING BUILDING ALTERATIONS

- B1 Existing monolithic rooflights to be removed replaced with PPC metal framed, double glazed rooflights to match arrangements and falls of existing
- B2 Existing linings and flashings to box gutters, to repaired/replaced
- B3 Existing asphalt flat roof to be made good and locally repaired
- B4 Existing adhesive bituminous roof covering to be removed and replaced with new insulation and single ply or EPDM membrane
- B5 New mansafe fall-arrest cable system to match existing layout
- B6 High level glazed panels to be broken out from glazed steel framed doors and replaced with new louvred vent PPC panels
- B7 Existing window to be removed and replaced with new double glazed, PPC steel framed leaf-and-a-half doors, to match existing style, with fixed louver panel above
- B8 PPC aluminium louvres
- B9 Existing RWP partially removed, reconfigured and extended with painted metal downpipe to match
- B10 New escape stair with balustrade railing and handrail, all metal PPC on site painted finish

C - LANDSCAPE

- (C1) 2no existing sheffield hoop cycle racks relocated to suit new courtyard layout
- (C2) New brick paving to courtyard with 'hit and miss' areas to incorporate low level planting between bricks
- (C3) Level planting beds and new planting
- (C4) Trellis fixed to ramp balustrade to support climbing plants



-	24/05/19	Planning
REV	DATE	DESCRIPTION

HaworthTompkins

33 Greenwood Place, London NW5 1LB  
+44 (0)20 7250 3225, [www.haworthtompkins.com](http://www.haworthtompkins.com)

JOB	1811: WARBURG INSTITUTE
DRG	

Ground Floor Plan  
Proposed

\_\_\_\_\_

DRG No	1811-HT-P-014
--------	---------------


SCALE 1:100 at A1

DRAWN BY HM      INSPECTED BY      EF

DRAWING FILE	INTERESTED BY	DATE

DRAWING STATUS **PLANNING**

## PLANNING