

**General Notes**

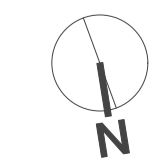
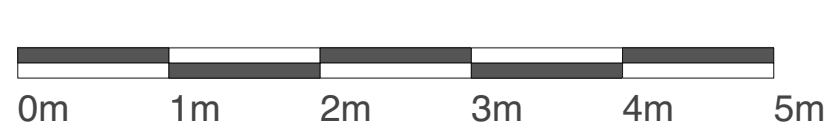
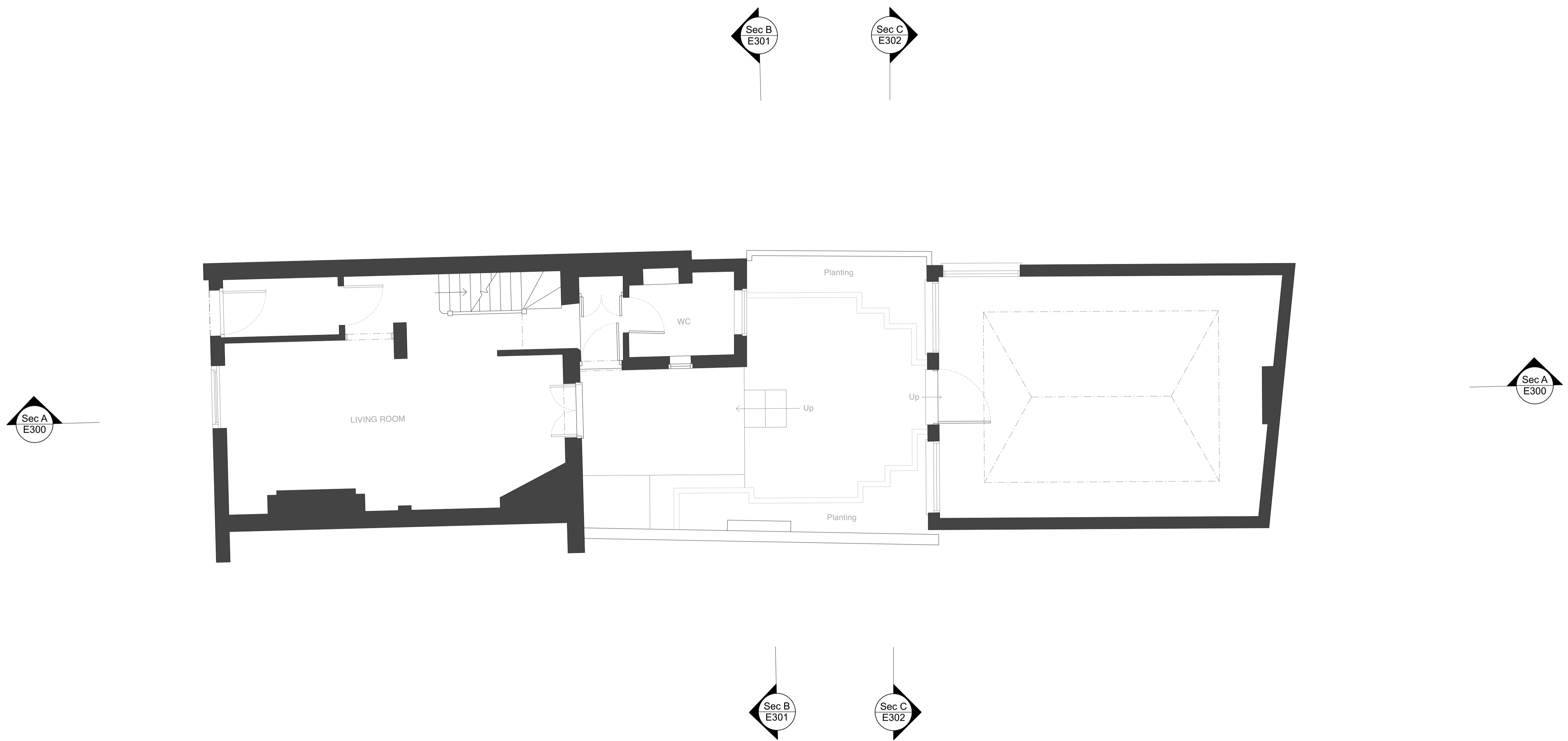
- All dimensions to be verified on site
- To be read in conjunction with all relevant documents
- In the event of discrepancy notify the Architect immediately
- All steel structural elements to be finished with intumescent coating, 30 minutes fire resistance. For all structural elements and connection see SE drawings.
- This document is copyright of Hugh Cullum Architects Ltd

**Issue Status**

- SK Sketch	- T Tender	- P Permissions
- D Design	- E Existing Condition	- C Contract

rev note date (drawn by/checked by)

(A) : Initial drawings DD.MM.YY (OW/HC)



**HUGH CULLUM ARCHITECTS LTD**  
 Bloomsbury Design  
 61b Judd Street  
 London WC1H 9QT  
 t 020 7383 7647  
 f 020 7387 7645  
 mail@hughcullum.com

**16 New End Square**  
 As Existing  
 General Arrangement  
 Ground Floor Plan  
 1:50@A1, 1:100@A3  
 November 2021  
**NES16 - E100 (A)**

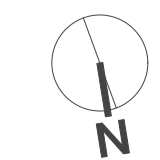
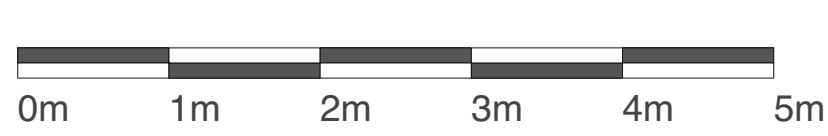
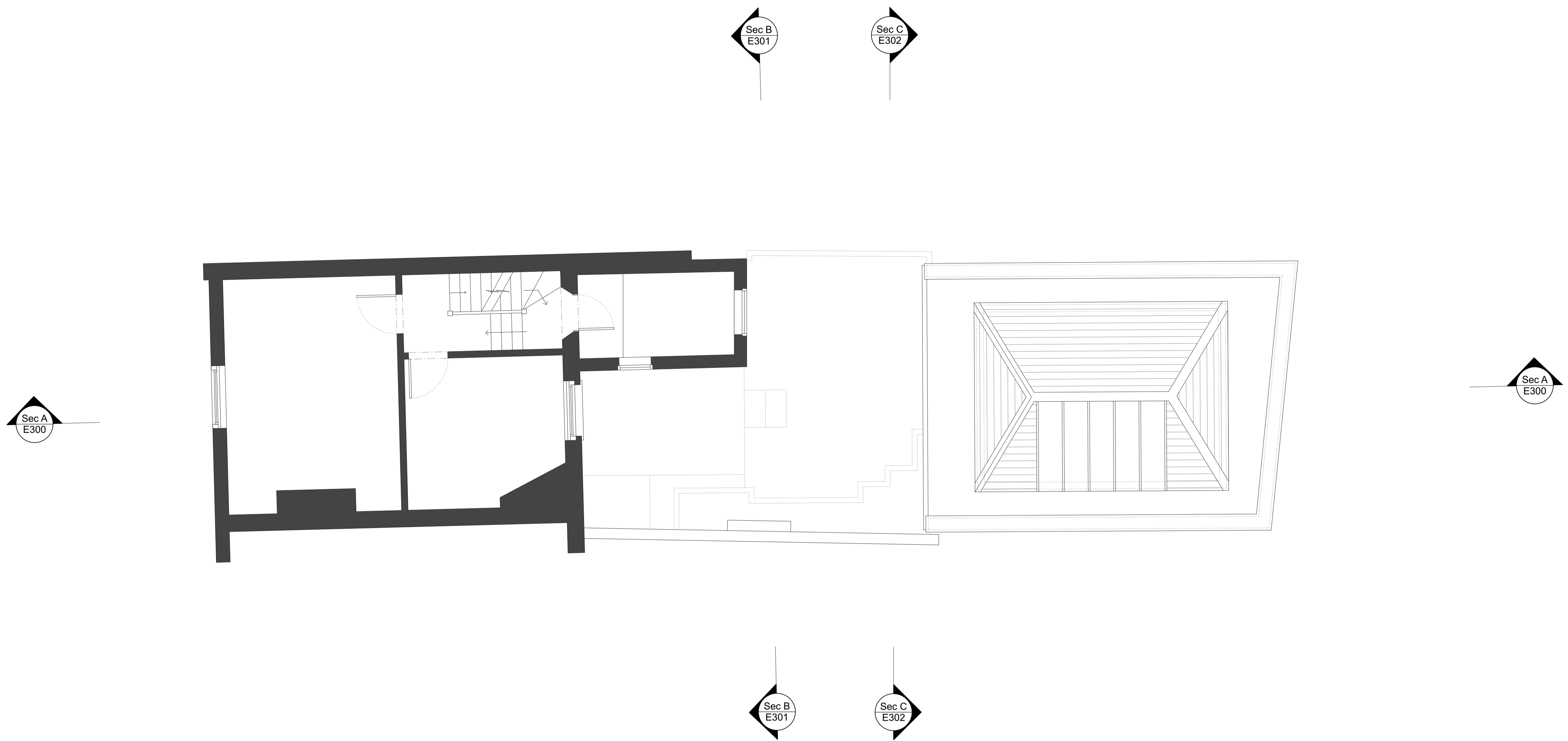
**General Notes**

- All dimensions to be verified on site
- To be read in conjunction with all relevant documents
- In the event of discrepancy notify the Architect immediately
- All steel structural elements to be finished with intumescent coating, 30 minutes fire resistance. For all structural elements and connection see SE drawings.
- This document is copyright of Hugh Cullum Architects Ltd

**Issue Status**

- SK Sketch	- T Tender	- P Permissions
- D Design	- E Existing Condition	- C Contract

rev	note	date	(drawn by/checked by)
(A)	: Initial drawings	DD.MM.YY	(OW/HC)



**HUGH CULLUM ARCHITECTS LTD**  
 Bloomsbury Design  
 61b Judd Street  
 London WC1H 9QT  
 t 020 7383 7647  
 f 020 7387 7645  
 mail@hughcullum.com

**16 New End Square**  
 As Existing  
 General Arrangement  
 First Floor Plan  
 1:50@A1, 1:100@A3  
 November 2021  
**NES16 - E101 (A)**

**General Notes**

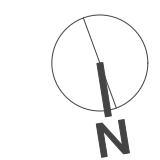
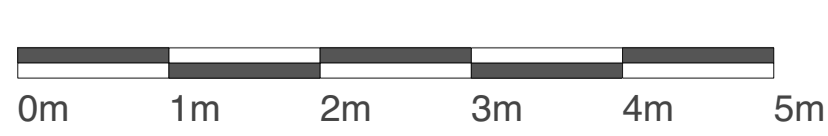
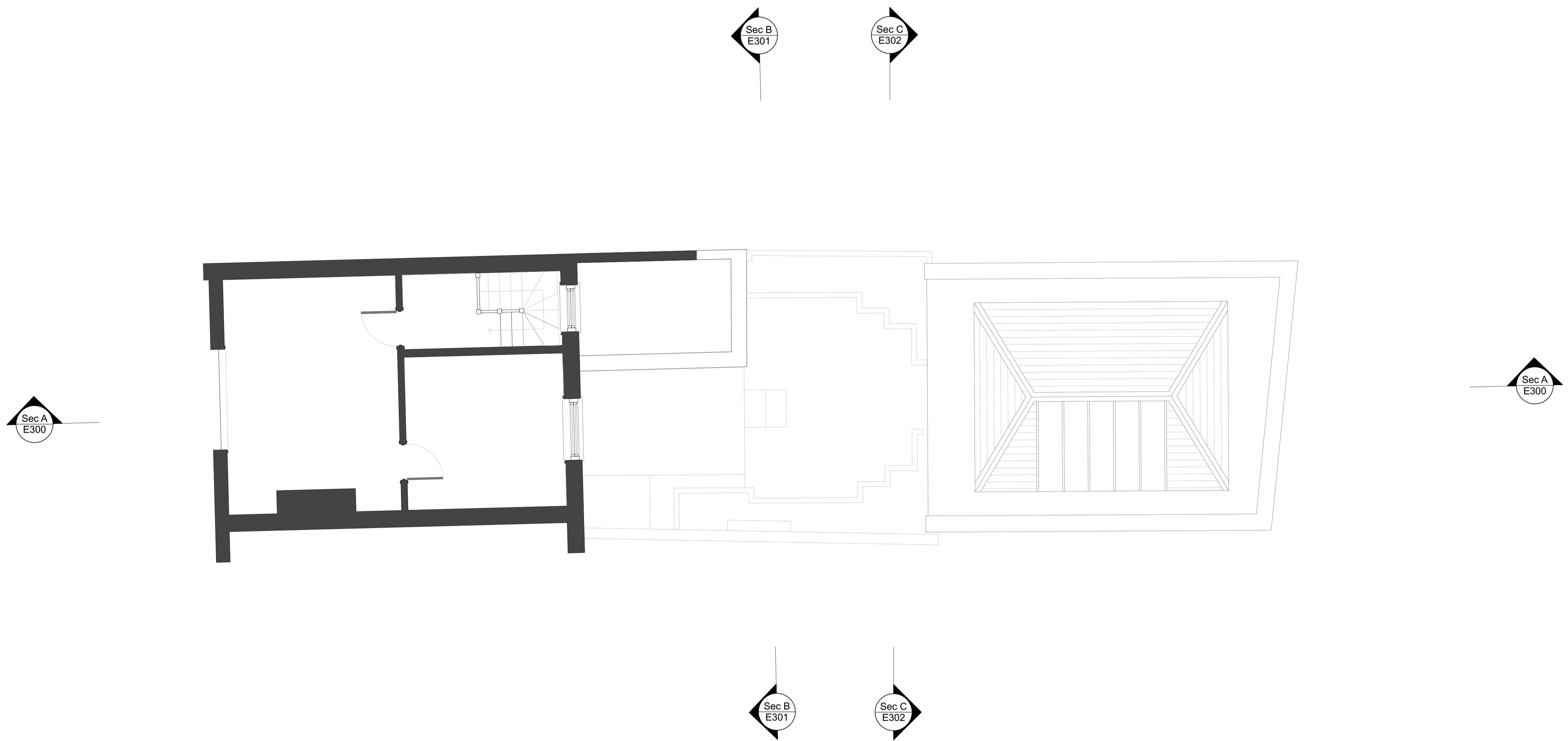
- All dimensions to be verified on site
- To be read in conjunction with all relevant documents
- In the event of discrepancy notify the Architect immediately
- All steel structural elements to be finished with intumescent coating, 30 minutes fire resistance. For all structural elements and connection see SE drawings.
- This document is copyright of Hugh Cullum Architects Ltd

**Issue Status**

- SK Sketch	- T Tender	- P Permissions
- D Design	- E Existing Condition	- C Contract

rev note date (drawn by/checked by)

(A) : Initial drawings DD.MM.YY (OW/HC)



**HUGH CULLUM ARCHITECTS LTD**  
 Bloomsbury Design  
 61b Judd Street  
 London WC1H 9QT  
 t 020 7383 7647  
 f 020 7387 7645  
 mail@hughcullum.com

**16 New End Square**  
 As Existing  
 General Arrangement  
 First Floor Plan  
 1:50@A1, 1:100@A3  
 November 2021  
**NES16 - E101 (A)**

**General Notes**

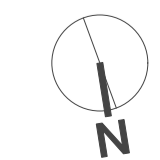
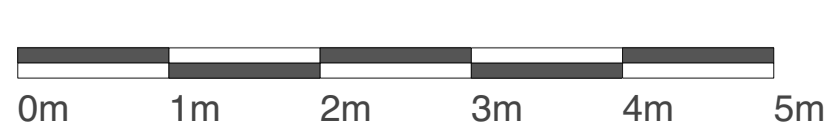
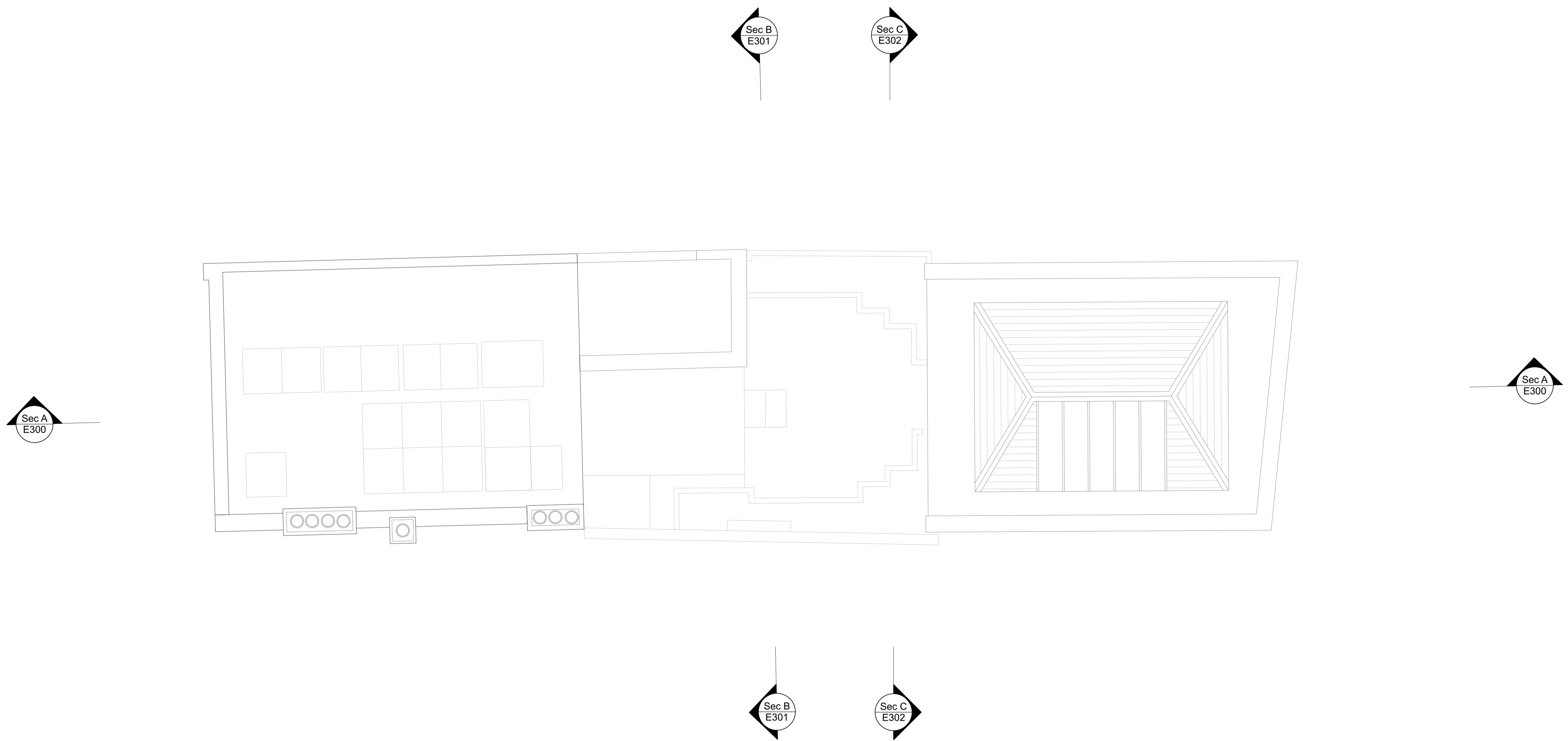
- All dimensions to be verified on site
- To be read in conjunction with all relevant documents
- In the event of discrepancy notify the Architect immediately
- All steel structural elements to be finished with intumescent coating, 30 minutes fire resistance. For all structural elements and connection see SE drawings.
- This document is copyright of Hugh Cullum Architects Ltd

**Issue Status**

- SK Sketch	- T Tender	- P Permissions
- D Design	- E Existing Condition	- C Contract

rev note date (drawn by/checked by)

(A) : Initial drawings DD.MM.YY (OW/HC)



**HUGH CULLUM ARCHITECTS LTD**  
 Bloomsbury Design  
 61b Judd Street  
 London WC1H 9QT  
 t 020 7383 7647  
 f 020 7387 7645  
 mail@hughcullum.com

**16 New End Square**  
 As Existing  
 General Arrangement  
 Roof Plan  
 1:50@A1, 1:100@A3  
 November 2021  
**NES16 - E103 (A)**

**General Notes**

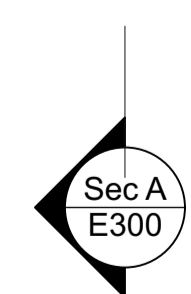
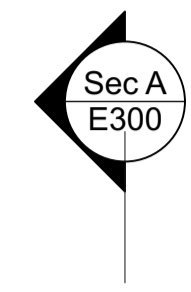
- All dimensions to be verified on site
- To be read in conjunction with all relevant documents
- In the event of discrepancy notify the Architect immediately
- All steel structural elements to be finished with intumescent coating, 30 minutes fire resistance. For all structural elements and connection see SE drawings.
- This document is copyright of Hugh Cullum Architects Ltd

**Issue Status**

- SK Sketch	- T Tender	- P Permissions
- D Design	- E Existing Condition	- C Contract

rev note date (drawn by/checked by)

(A) : Initial drawings DD.MM.YY (OW/HC)



**HUGH CULLUM ARCHITECTS LTD** **16 New End Square**  
 Bloomsbury Design As Existing  
 61b Judd Street General Arrangement  
 London WC1H 9QT Elevation  
 t 020 7383 7647 1:50@A1, 1:100@A3  
 f 020 7387 7645 November 2021  
 mail@hughcullum.com **NES16 - E200 (A)**

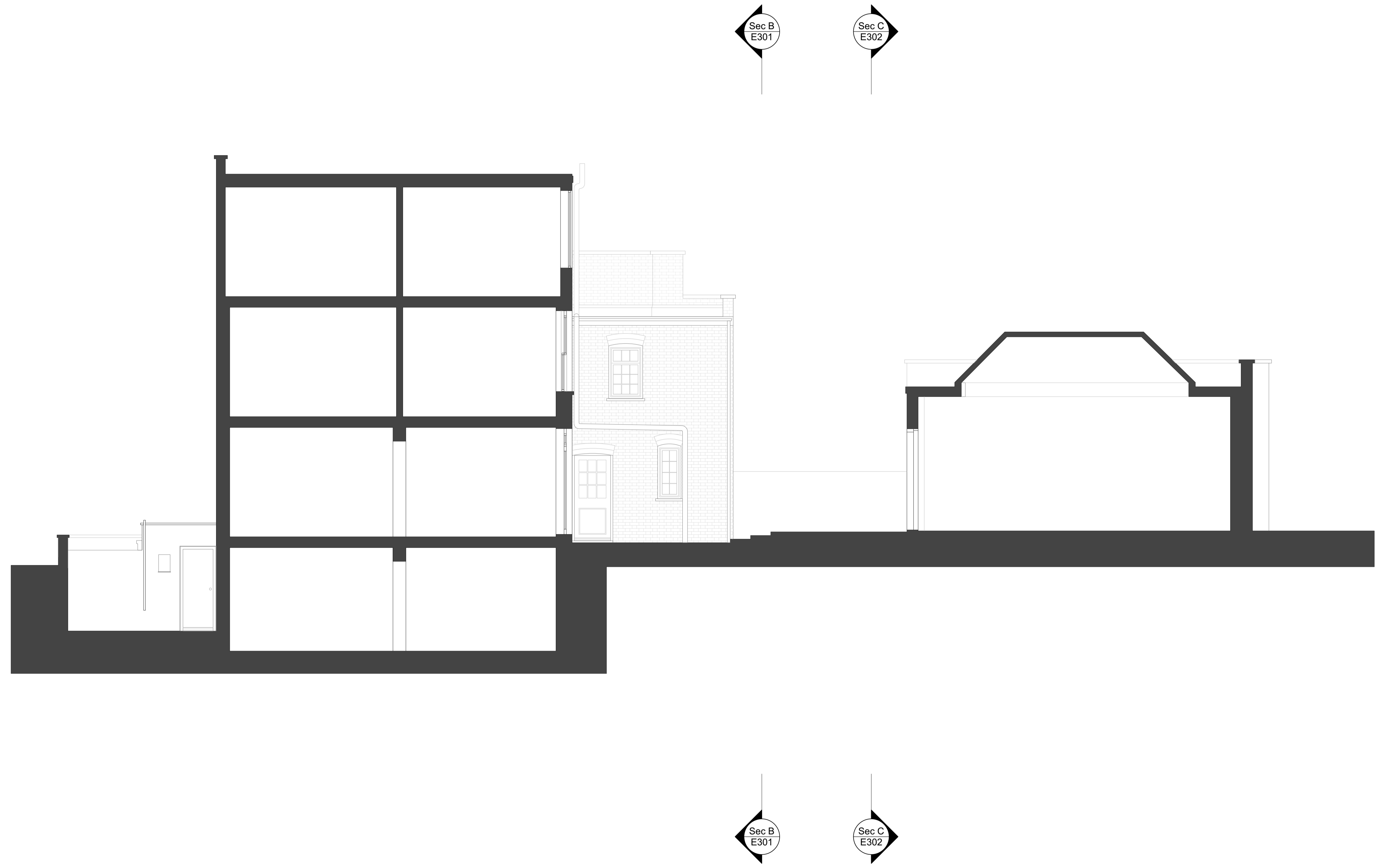
**General Notes**

- All dimensions to be verified on site
- To be read in conjunction with all relevant documents
- In the event of discrepancy notify the Architect immediately
- All steel structural elements to be finished with intumescent coating, 30 minutes fire resistance. For all structural elements and connection see SE drawings.
- This document is copyright of Hugh Cullum Architects Ltd

**Issue Status**

- SK Sketch	- T Tender	- P Permissions
- D Design	- E Existing Condition	- C Contract

rev	note	date	(drawn by/checked by)
(A)	: Initial drawings	DD.MM.YY	(OW/HC)



**HUGH CULLUM ARCHITECTS LTD**  
 Bloomsbury Design  
 61b Judd Street  
 London WC1H 9QT  
 t 020 7383 7647  
 f 020 7387 7645  
 mail@hughcullum.com

**16 New End Square**  
 As Existing  
 General Arrangement  
 Section A  
 1:50@A1, 1:100@A3  
 November 2021  
**NES16 - E300 (A)**

**General Notes**

- All dimensions to be verified on site
- To be read in conjunction with all relevant documents
- In the event of discrepancy notify the Architect immediately
- All steel structural elements to be finished with intumescent coating, 30 minutes fire resistance. For all structural elements and connection see SE drawings.
- This document is copyright of Hugh Cullum Architects Ltd

**Issue Status**

- SK Sketch	- T Tender	- P Permissions
- D Design	- E Existing Condition	- C Contract

rev	note	date	(drawn by/checked by)
(A)	: Initial drawings	DD.MM.YY	(OW/HC)

Sec A  
E300



Sec A  
E300



**HUGH CULLUM ARCHITECTS LTD**  
 Bloomsbury Design  
 61b Judd Street  
 London WC1H 9QT  
 t 020 7383 7647  
 f 020 7387 7645  
 mail@hughcullum.com

**16 New End Square**  
 As Existing  
 General Arrangement  
 Section B  
 1:50@A1, 1:100@A3  
 November 2021

**NES16 - E301 (A)**

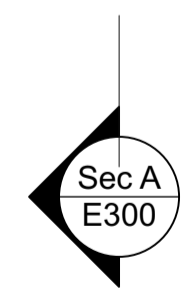
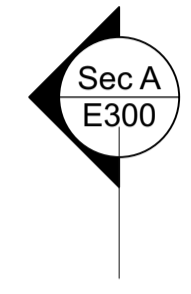
**General Notes**

- All dimensions to be verified on site
- To be read in conjunction with all relevant documents
- In the event of discrepancy notify the Architect immediately
- All steel structural elements to be finished with intumescent coating, 30 minutes fire resistance. For all structural elements and connection see SE drawings.
- This document is copyright of Hugh Cullum Architects Ltd

**Issue Status**

- SK Sketch	- T Tender	- P Permissions
- D Design	- E Existing Condition	- C Contract

rev	note	date	(drawn by/checked by)
(A)	: Initial drawings	DD.MM.YY	(OW/HC)



**HUGH CULLUM ARCHITECTS LTD**  
 Bloomsbury Design  
 61b Judd Street  
 London WC1H 9QT  
 t 020 7383 7647  
 f 020 7387 7645  
 mail@hughcullum.com

**16 New End Square**  
 As Existing  
 General Arrangement  
 Section C  
 1:25@A1, 1:50@A3  
 November 2021

**NES16 - E302 (A)**