

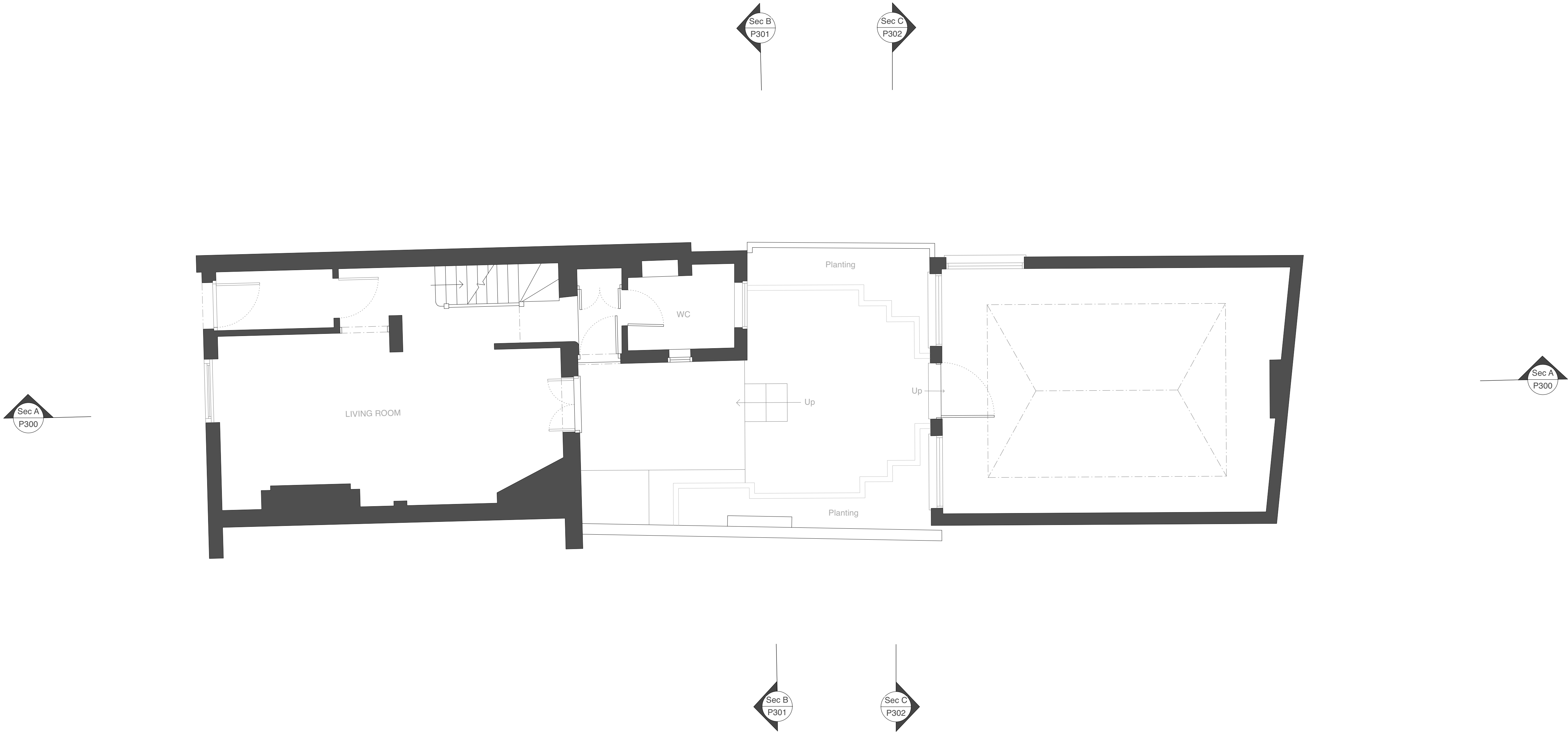
General Notes

- All dimensions to be verified on site
- To be read in conjunction with all relevant documents
- In the event of discrepancy notify the Architect immediately
- All steel structural elements to be finished with intumescent coating, 30 minutes fire resistance. For all structural elements and connection see SE drawings.
- This document is copyright of Hugh Cullum Architects Ltd

Issue Status

- SK Sketch	- T Tender	- P Permissions
- D Design	- E Existing Condition	- C Contract

rev	note	date	(drawn by/checked by)
(A)	: Initial drawings	DD.MM.YY	(OW/HC)



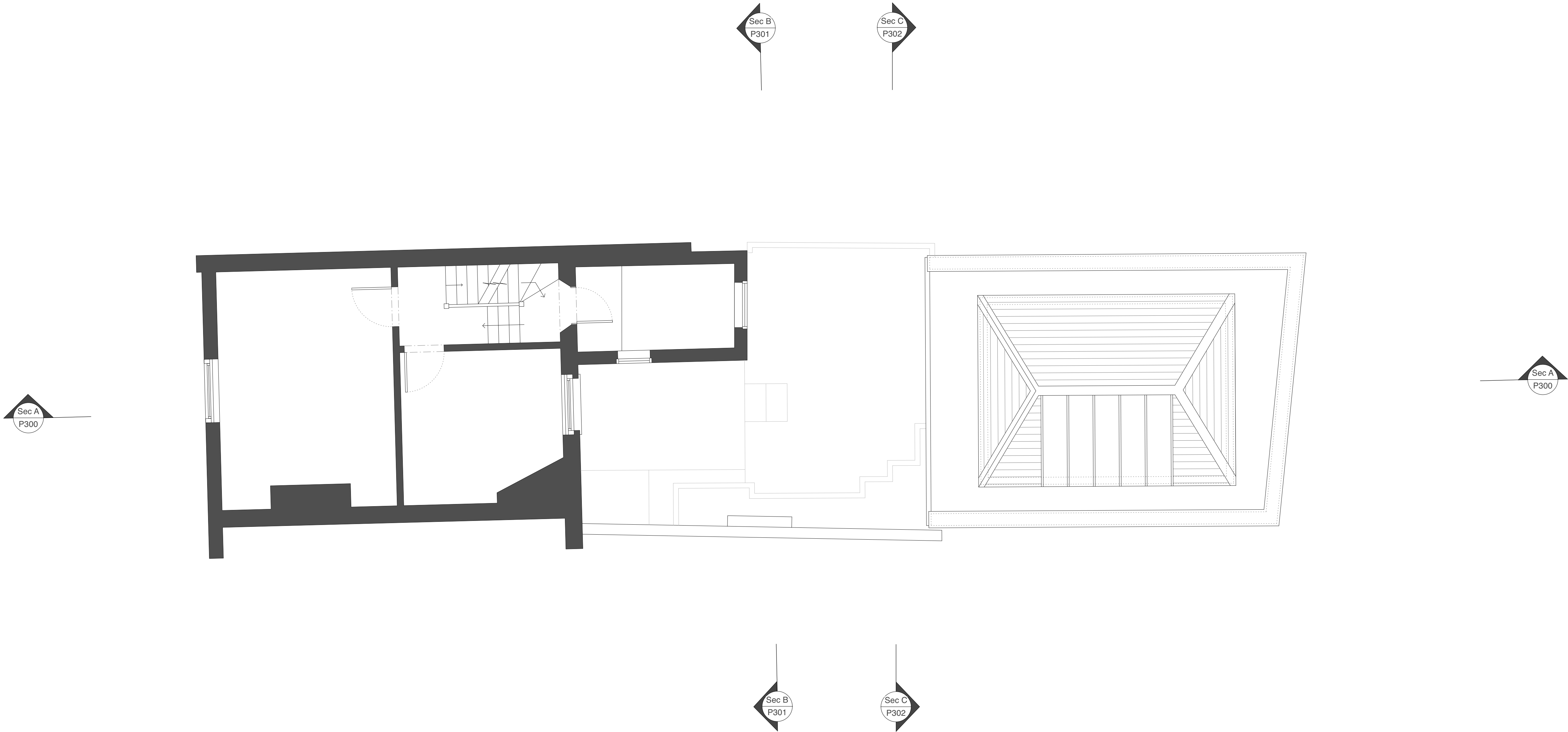
General Notes

- All dimensions to be verified on site
- To be read in conjunction with all relevant documents
- In the event of discrepancy notify the Architect immediately
- All steel structural elements to be finished with intumescent coating, 30 minutes fire resistance. For all structural elements and connection see SE drawings.
- This document is copyright of Hugh Cullum Architects Ltd

Issue Status

- SK Sketch	- T Tender	- P Permissions
- D Design	- E Existing Condition	- C Contract

rev	note	date	(drawn by/checked by)
(A)	: Initial drawings	DD.MM.YY	(OW/HC)



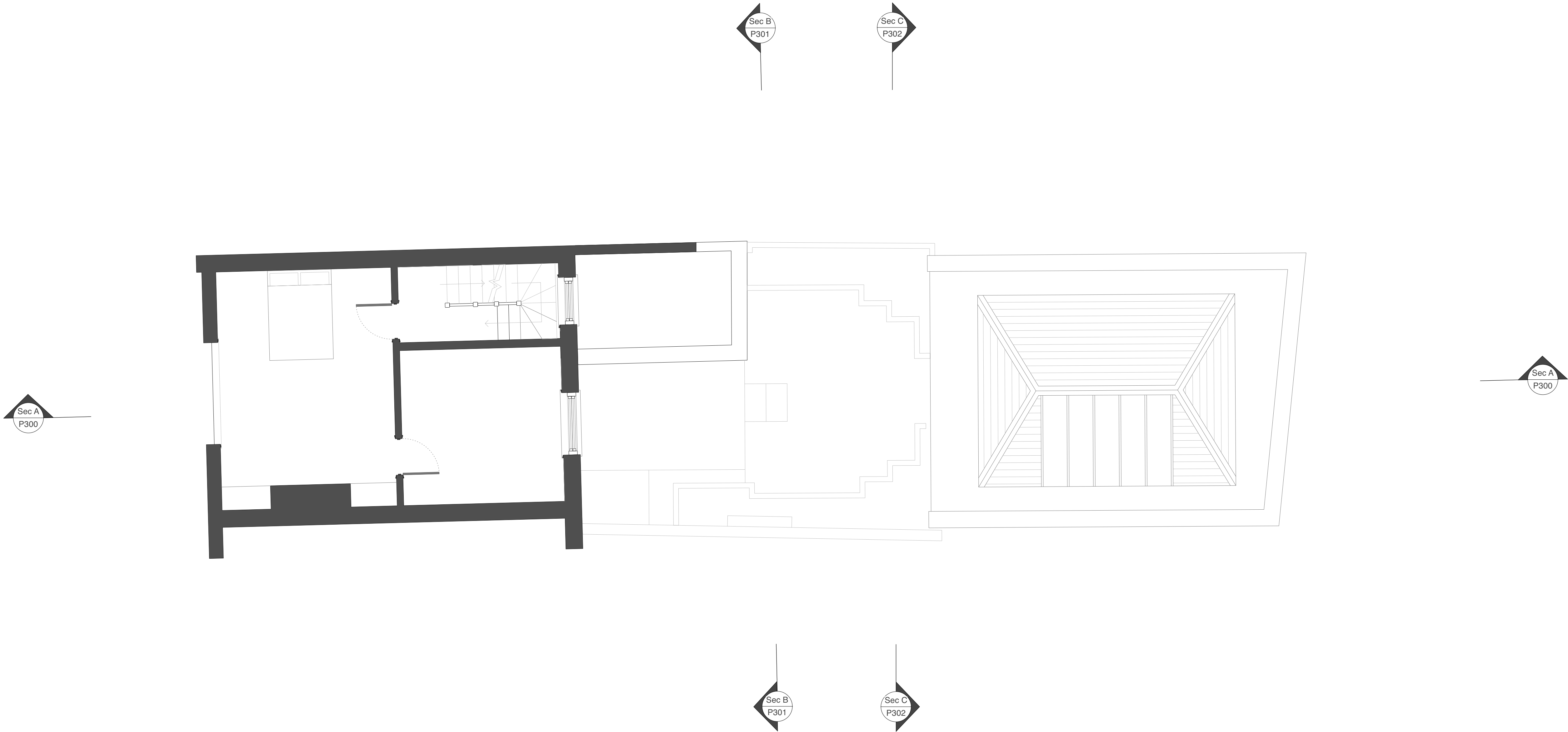
General Notes

- All dimensions to be verified on site
- To be read in conjunction with all relevant documents
- In the event of discrepancy notify the Architect immediately
- All steel structural elements to be finished with intumescent coating, 30 minutes fire resistance. For all structural elements and connection see SE drawings.
- This document is copyright of Hugh Cullum Architects Ltd

Issue Status

- SK Sketch	- T Tender	- P Permissions
- D Design	- E Existing Condition	- C Contract

rev	note	date	(drawn by/checked by)
(A)	: Initial drawings	DD.MM.YY	(OW/HC)



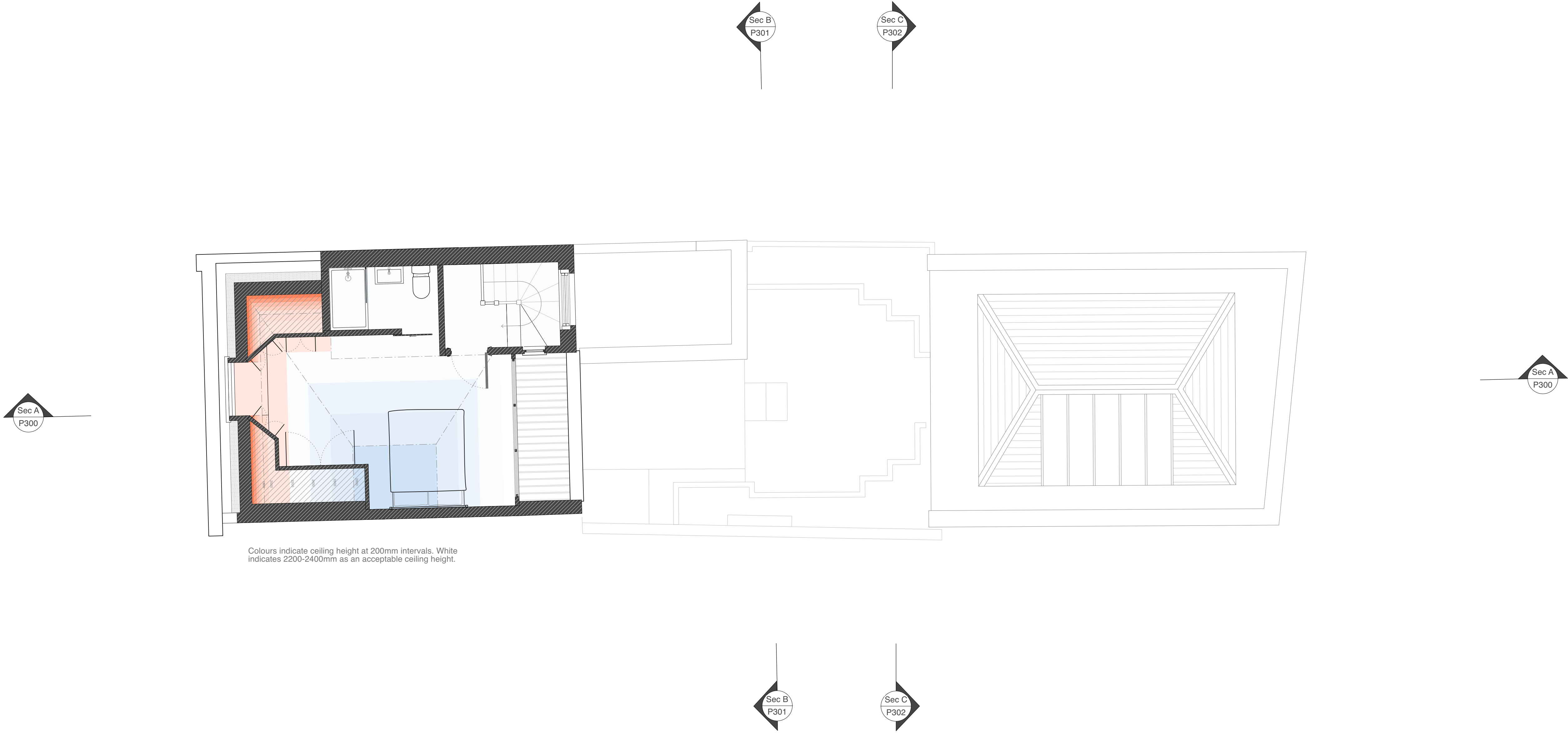
General Notes

- All dimensions to be verified on site
- To be read in conjunction with all relevant documents
- In the event of discrepancy notify the Architect immediately
- All steel structural elements to be finished with intumescent coating, 30 minutes fire resistance. For all structural elements and connection see SE drawings.
- This document is copyright of Hugh Cullum Architects Ltd

Issue Status

- SK Sketch	- T Tender	- P Permissions
- D Design	- E Existing Condition	- C Contract

rev	note	date	(drawn by/checked by)
(A)	: Initial drawings	DD.MM.YY	(OW/HC)



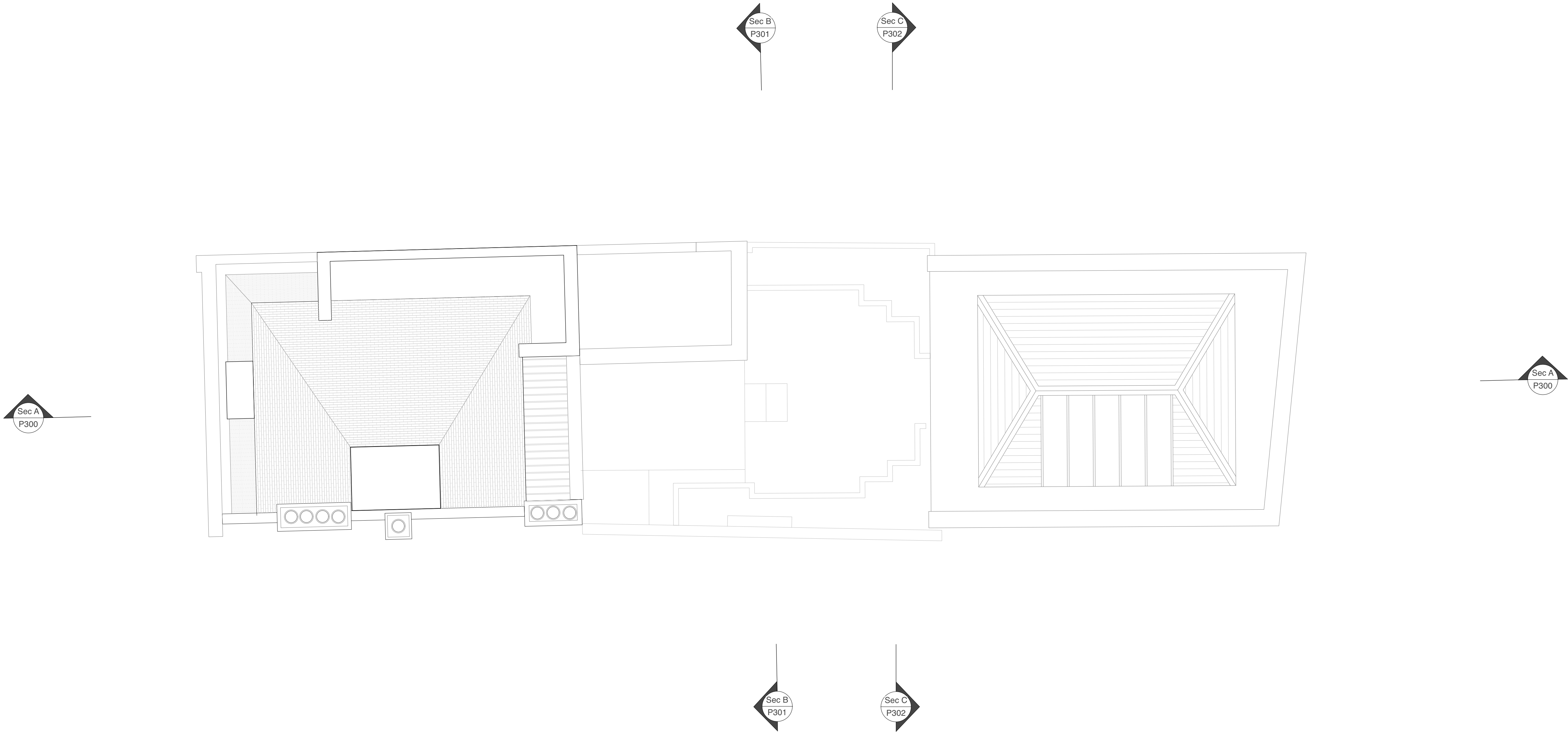
General Notes

- All dimensions to be verified on site
- To be read in conjunction with all relevant documents
- In the event of discrepancy notify the Architect immediately
- All steel structural elements to be finished with intumescent coating, 30 minutes fire resistance. For all structural elements and connection see SE drawings.
- This document is copyright of Hugh Cullum Architects Ltd

Issue Status

- SK Sketch	- T Tender	- P Permissions
- D Design	- E Existing Condition	- C Contract

rev	note	date	(drawn by/checked by)
(A)	: Initial drawings	DD.MM.YY	(OW/HC)



Line of stair tower beyond

Dormer window to match proportions of original ground floor window in line with classical principles.

White-painted timber fascia and framing, flat ventilated lead roof over.

Georgian-type sash window (3 over 6) with thin Georgian glazing bars, no horns.

Dual-pitched asymmetric Mansard designed to match approved at neighbouring 14 New End Square (LPA Ref 2021/4022/P). Note that exact drawings have been requested from architect but not forthcoming so that exact match cannot be guaranteed.

Welsh slate courses with lead roll ridge and typical lead flashing details.

Parapet raised to accommodate new Mansard roof extension, designed to match neighbour at number 14. Please note as above that exact dimensions have not been forthcoming from neighbour.

London stock to match existing and Portland stone coping stone pitched backwards to allow proper drainage.

Central chimney stack raised above existing in brickwork and general detailing to match existing

Expressed party wall built along boundary to accommodate Mansard structure and in line with typical Georgian fire regulations.

Brick-on-end coping, London stock to match existing.

General Notes

- All dimensions to be verified on site
- To be read in conjunction with all relevant documents
- In the event of discrepancy notify the Architect immediately
- All steel structural elements to be finished with intumescent coating, 30 minutes fire resistance. For all structural elements and connection see SE drawings.
- This document is copyright of Hugh Cullum Architects Ltd

Issue Status

- | | | |
|-------------|------------------------|-----------------|
| - SK Sketch | - T Tender | - P Permissions |
| - D Design | - E Existing Condition | - C Contract |

rev	note	date	(drawn by/checked by)
(A)	: Initial drawings	DD.MM.YY	(OW/HC)



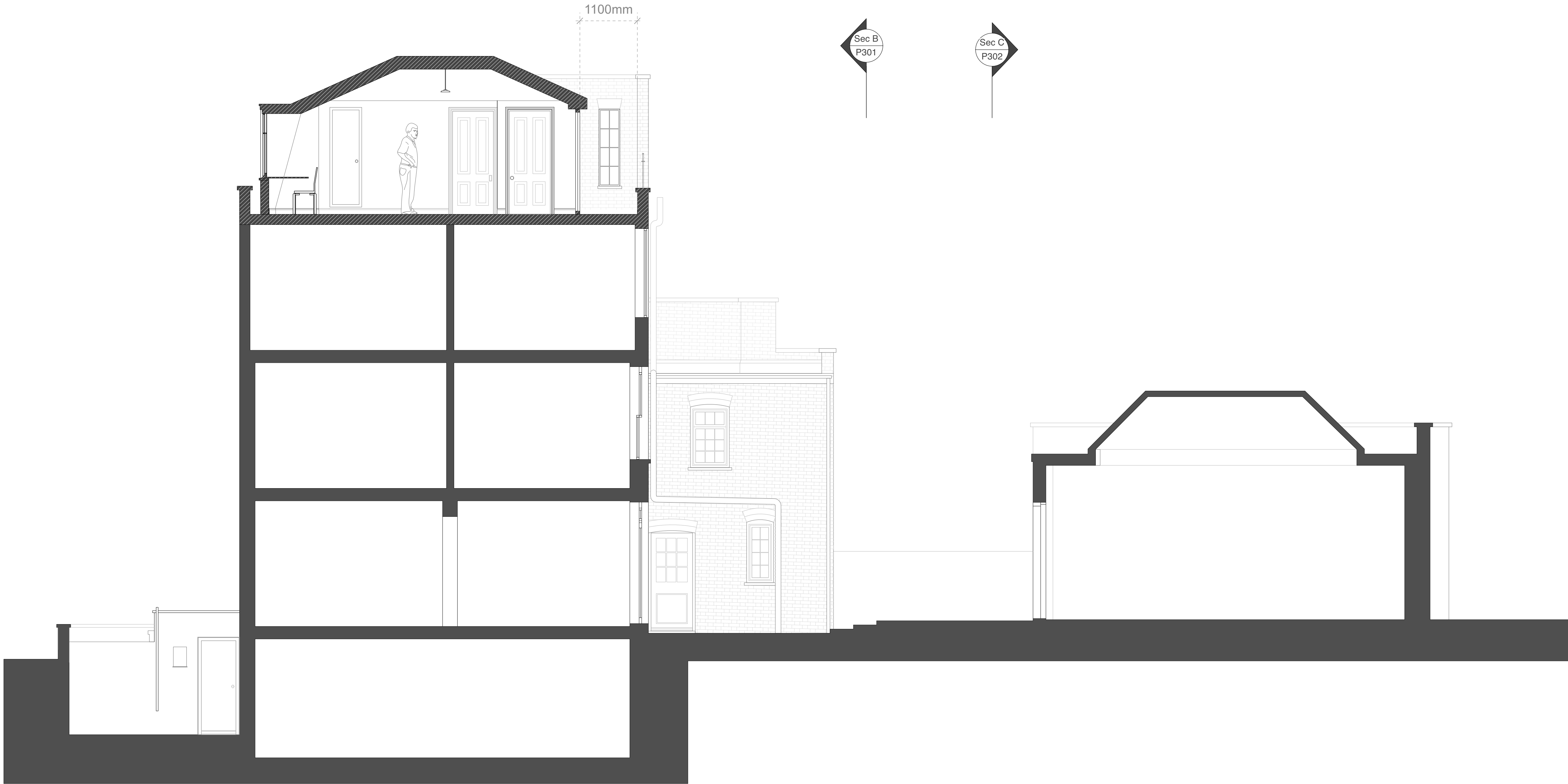
General Notes

- All dimensions to be verified on site
- To be read in conjunction with all relevant documents
- In the event of discrepancy notify the Architect immediately
- All steel structural elements to be finished with intumescent coating, 30 minutes fire resistance. For all structural elements and connection see SE drawings.
- This document is copyright of Hugh Cullum Architects Ltd

Issue Status

- SK Sketch	- T Tender	- P Permissions
- D Design	- E Existing Condition	- C Contract

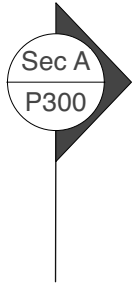
rev	note	date	(drawn by/checked by)
(A)	: Initial drawings	DD.MM.YY	(OW/HC)



Georgian-style French doors onto terrace (likely not visible from rear garden). White painted timber.

Historic style railings affixed to parapet black gloss painted.

Brickwork built up to new parapet to match existing, Portland stone coping over.



Stair tower raised above existing level of parapet to allow for access, mirroring existing/proposed at neighbouring number 14.

Small Georgian-type window at upper floor in line with principles of classical proportion, reduced height and matched width to window below. Also matching appearance of original second floor on front elevation.

General Notes			
- All dimensions to be verified on site			
- To be read in conjunction with all relevant documents			
- In the event of discrepancy notify the Architect immediately			
- All steel structural elements to be finished with intumescent coating, 30 minutes fire resistance. For all structural elements and connection see SE drawings.			
- This document is copyright of Hugh Cullum Architects Ltd			
Issue Status			
- SK Sketch	- T Tender	- P Permissions	
- D Design	- E Existing Condition	- C Contract	
rev	note	date	(drawn by/checked by)
(A)	: Initial drawings	DD.MM.YY	(OW/HC)



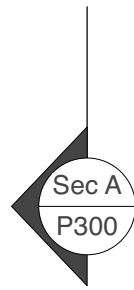
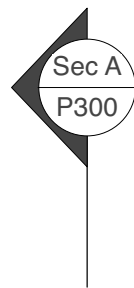
General Notes

- All dimensions to be verified on site
- To be read in conjunction with all relevant documents
- In the event of discrepancy notify the Architect immediately
- All steel structural elements to be finished with intumescent coating, 30 minutes fire resistance. For all structural elements and connection see SE drawings.
- This document is copyright of Hugh Cullum Architects Ltd

Issue Status

- SK Sketch	- T Tender	- P Permissions
- D Design	- E Existing Condition	- C Contract

rev	note	date	(drawn by/checked by)
(A)	: Initial drawings	DD.MM.YY	(OW/HC)



General Notes

- All dimensions to be verified on site
- To be read in conjunction with all relevant documents
- In the event of discrepancy notify the Architect immediately
- All steel structural elements to be finished with intumescent coating, 30 minutes fire resistance. For all structural elements and connection see SE drawings.
- This document is copyright of Hugh Cullum Architects Ltd

Issue Status

- SK Sketch	- T Tender	- P Permissions
- D Design	- E Existing Condition	- C Contract

rev	note	date	(drawn by/checked by)
(A)	: Initial drawings	DD.MM.YY	(OW/HC)

