

NOTE:
EXISTING HANDRAILS TO BE REMOVED,
EXISTING OLO DISH AND YAGI TO BE
RELOCATED & EXISTING SATELLITE DISH
TO BE REMOVED

ALL DIMENSIONS ARE IN mm UNLESS NOTED OTHERWISE

N.G.R | E: 530014 | N: 181123
CONCESSION REQUIRED | **YES**

NOTES:

COLOUR KEY	
VF EQUIPMENT ALLOCATED	
TEF EQUIPMENT ALLOCATED	
SHARED EQUIPMENT ALLOCATED	
NEUTRAL SPACE ALLOCATED	
VF FUTURE ACTIVE EQUIPMENT	
TEF FUTURE ACTIVE EQUIPMENT	
FUTURE PASSIVE EQUIPMENT	

	=FIRE ALARM
	=LIGHT SWITCH
	=LIGHT

REV	MODIFICATION	BY	CH	DATE
A	Issued for Approval	SBL	RA	21.07.21

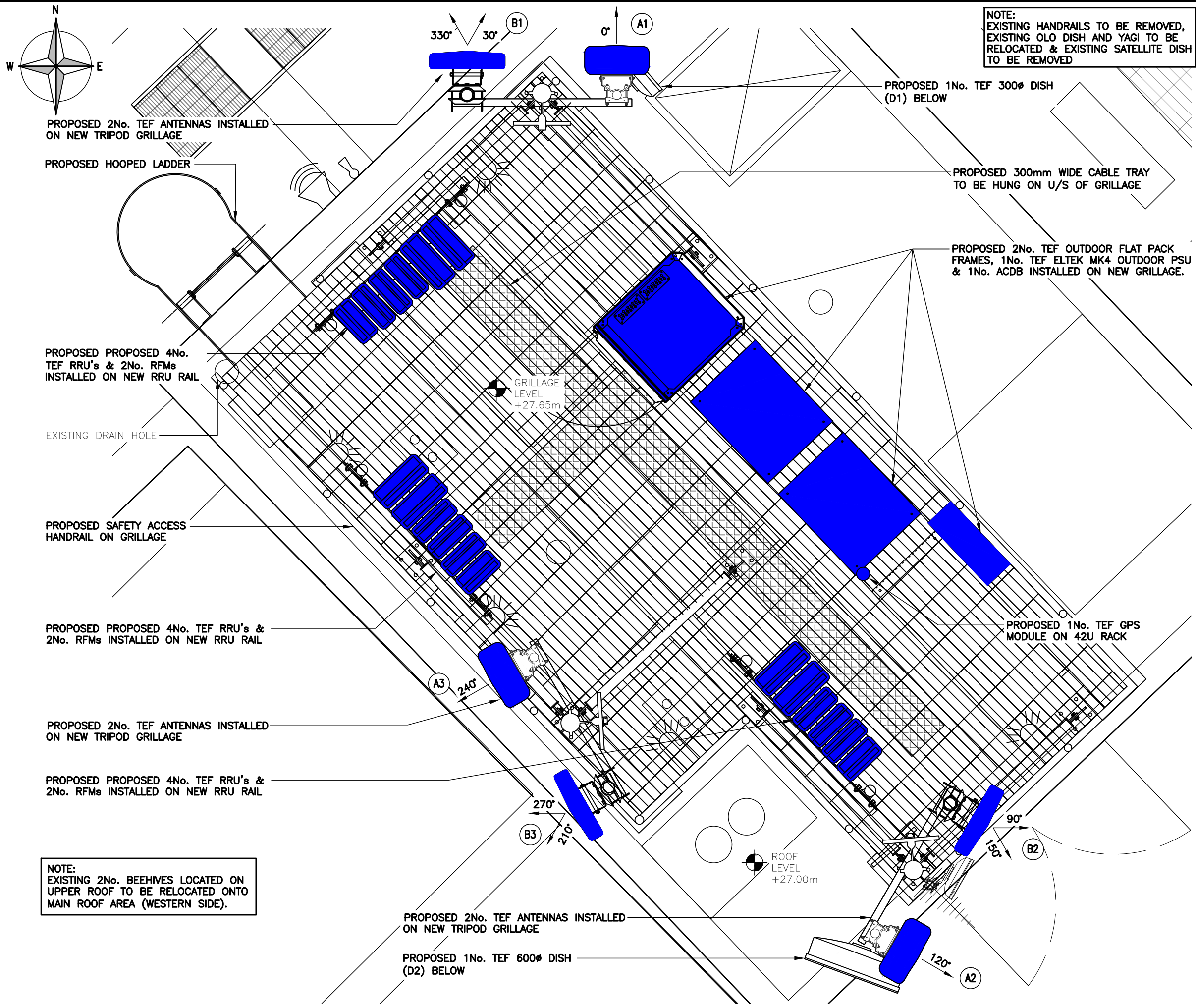
Unit E, Madison Place, Northampton Road,
Manchester, M40 5AG
Tel: 0161 785 4500
Fax: 0161 785 4501
Web: www.clarke-telecom.com

CORNERSTONE - NON BEACON

Cell Name		Opt.
164 SHAFTSBURY AVENUE		-
Cell ID No		
CORNERSTONE	TEF	VF
235679_20	80187	N/A

Site Address / Contact Details
164 SHAFTSBURY
164 SHAFTSBURY AVENUE
LONDON
GREATER LONDON
WC2H 8HL

Drawing Title: ANTENNA PLAN & EQUIPMENT LAYOUT			
Purpose of issue: PLANNING			Dwg Rev:
Drawing Number: 400			A
Surveyed By: RA	Original Sheet Size: A3		Pack Issue:
Drawn: SBL	Date: 12.07.21	Checked: RA	Date: 21.07.21
			A



The drawings comply with TEF & Vodafone Non-Standard ICNIRP guidelines.
Designed in accordance with CORNERSTONE document: SDN0013

PROPOSED TEF ANTENNA PLAN & EQUIPMENT LAYOUT
(1:25)

