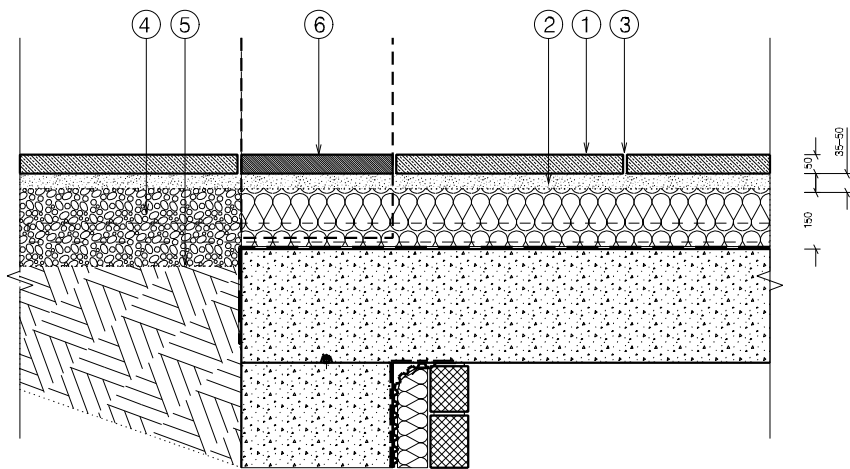


② P2\_Brick sett to lower ground terraces

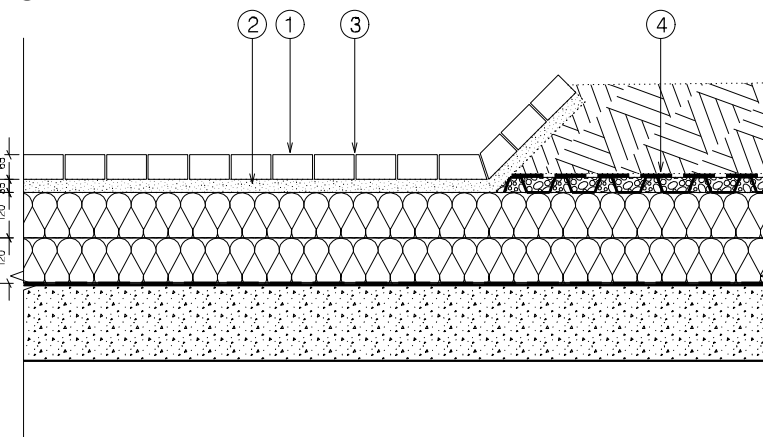


① P1 /P5\_Concrete paviors to public realm (Finchley Road) to match pattern

Notes :

- ① Concrete Paviors, laid to match existing pattern /bond.
- ② Bedding: 35mm compacted sand bed
- ③ Joints: 4-6mm fine silica sand joints
- ④ Sub base: Type 1 compacted hardcore\* – to Engineer's specification
- ⑤ Geotextile Membrane (Terram 1000 or similar)
- ⑥ Stone tiles to match structural stone columns/lintels

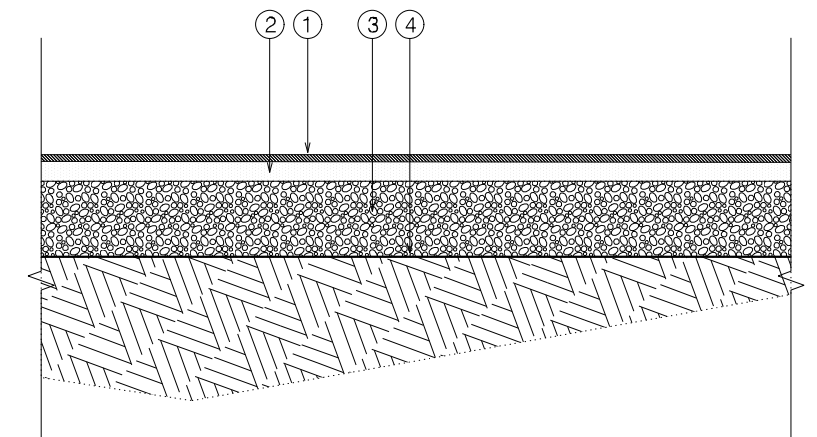
\*N.B Construction Build-ups for bases and sub-bases to Highway Engineer's specification and subject to confirmed CBR values form in-situ CBR test carried on sub-grade.



③ P2\_Brick setts to roof garden terraces

Notes :

- ① Permeable Surface Course: brick setts to match structural stone (215X102.5x65) laid stack bond
- ② Bedding: 3-5mm crushed gravel fill to infill drainage board and provide bedding layer
- ③ Joints: 4-6mm wide with 2-3mm crushed gravel infill to joints
- ④ Drainage Board: Water storage & drainage board to be used throughout roof garden landscape
- ⑤ Sub base: Type 1 compacted hardcore\* – to Engineer's specification
- ⑥ Geotextile Membrane (Terram 1000 or similar)



④ P3\_Hot rolled asphalt with decorative chippings to footpaths

Notes :

- ① Surface course: Hot rolled asphalt with white limestone chippings rolled into the surface (8-18mm nominal size)
- ② Binding course: to engineers specification\*
- ③ Sub base: Type 1 compacted hardcore\* – to Engineer's specification
- ④ Geotextile Membrane (Terram 1000 or similar)

\*N.B Construction Build-ups for bases and sub-bases to Highway Engineer's specification and subject to confirmed CBR values form in-situ CBR test carried on sub-grade.

GENERAL NOTES:

1. All drawings and specifications are to be read in conjunction with each other. Any conflict found within the complete set of drawings and existing site conditions must be reported to the principal consultant immediately.
2. Refer to M+E consultant drawings for detailed services information.
3. Finished topsoil levels to be 25mm higher than adjoining surfaces kerb to allow for settlement.
4. All subsoil and topsoil depths referred to are minimum unless stated otherwise.
5. All dimensions are to finished surface levels.
6. All landscape construction drawings to be read in conjunction with soft landscape specification for details on planting. Refer to plant schedule for details on species, sizes and specification of plants.
7. All topsoil and subsoil works to be in accordance with topsoil specification.
8. All works and materials to be in accordance with current applicable statutory legislation and British standards.
9. Sub-base thickness for full depth construction is based on 2-3% CBR. Contractor to verify actual CBR value on site by carrying out test as various formations as directed by Engineer.
10. This drawing is not for construction and is to be used for PLANNING ONLY.