

- EXTERNAL LIGHT FITTINGS**
- (F) Low level external light fitting. See specification for details.
 - (H) Low level external light fitting. See specification for details.
 - (I) Up lighting external light fitting. See specification for details.
 - (J) External light fitting. See specification for details.

(F) Hunza Tier light (260mm) bronze
 - 510lm
 - 4000K
 - IP66
 - size: 25(dia.) x700



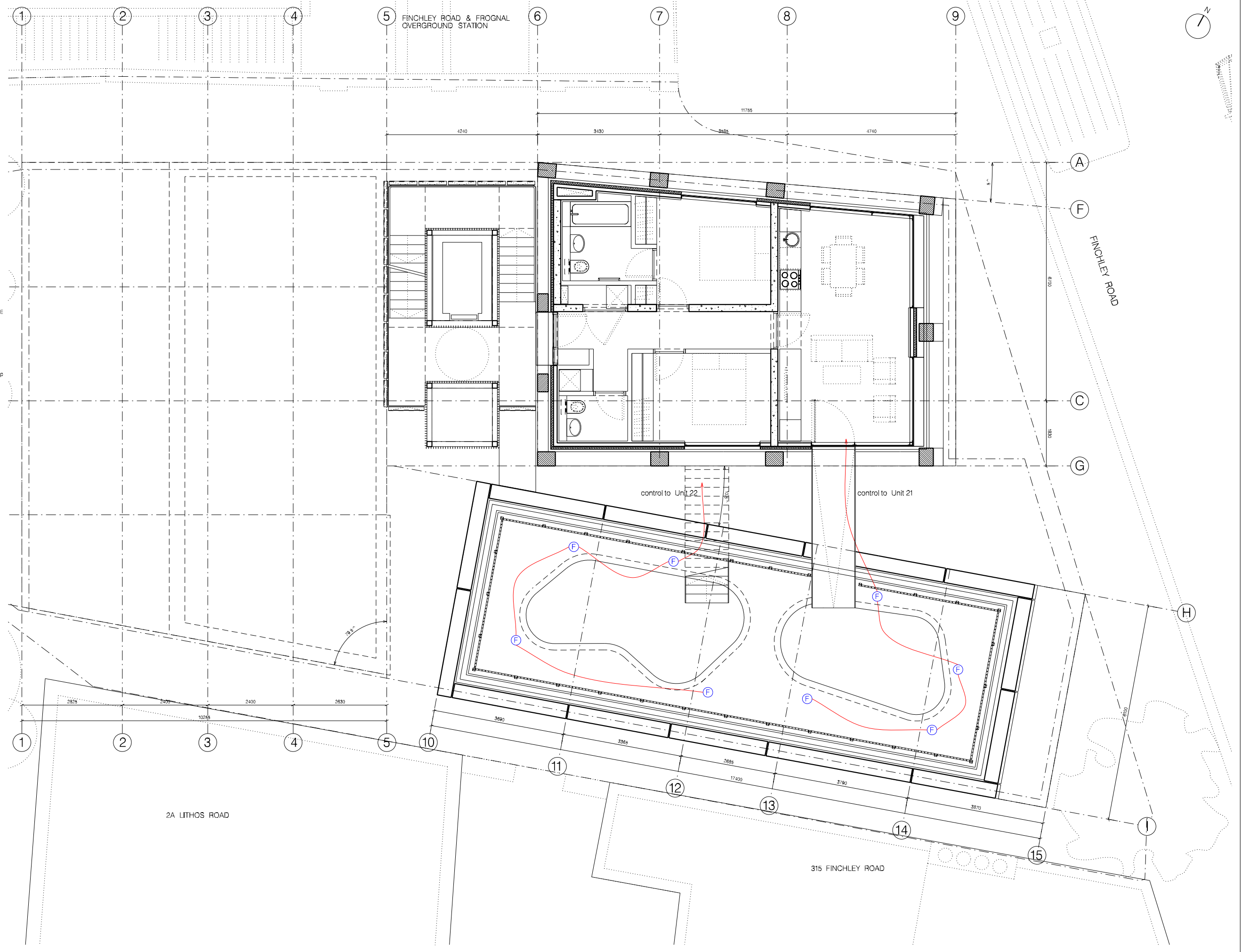
(H) Iguzzini LED_EG67
 - 21W 2550lm
 - 4000K CRI 80
 - Optic: wide flood 46/48
 - IP66
 - size: 61x47x77



(I) Iguzzini LED_E122
 - 6.7W 750lm
 - 4000K CRI 80
 - D - diffused light
 - IP68
 - size: 144(dia.) x175



(J) Iguzzini LED_BW28
 - 20W 1860lm
 - 4000K CRI 80
 - Optic: flood 46
 - IP67
 - size: 1609x55x74



REVISION: A	PURPOSE: ISSUED FOR PLANNING	DATE: 19.04.2018	1. The design and these drawings are the sole copyright of Arca Tania Architects Ltd (Company) Ltd, London, UK. Tel: 020 7583 8444. Fax: 020 7288 9655. 2. Do not scale from this drawing in other CAD or digital form. Use vision dimensions only. To check drawing has been sent to the intended scale this bar should be 50mm long @A1	Information: - Equipment - Fixing - Tension - Construction	CLIENT: 317 Finchley Road	PROJECT: 317 Finchley Road London NW3 6EP	DWG TITLE: 5th Floor+ garden - Lighting & Small Power	REVISION: A	DATE: SEP 2017	SCALE: A1 1:50 A3 1:100
								DWG No: 240 - 1072	PURPOSE OF ISSUE: P	DK AT