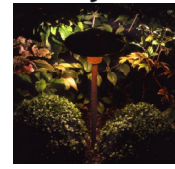


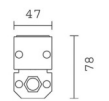
EXTERNAL LIGHT FITTINGS

- F** Low level external light fitting. See specification for details.
- H** Low level external light fitting. See specification for details.
- I** Up lighting external light fitting. See specification for details.
- J** External light fitting. See specification for details.

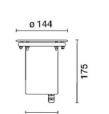
F
 Hunza Tier light (260mm) bronze
 - 510lm
 - 4000K
 - IP66
 - size: 25(dia.) x700



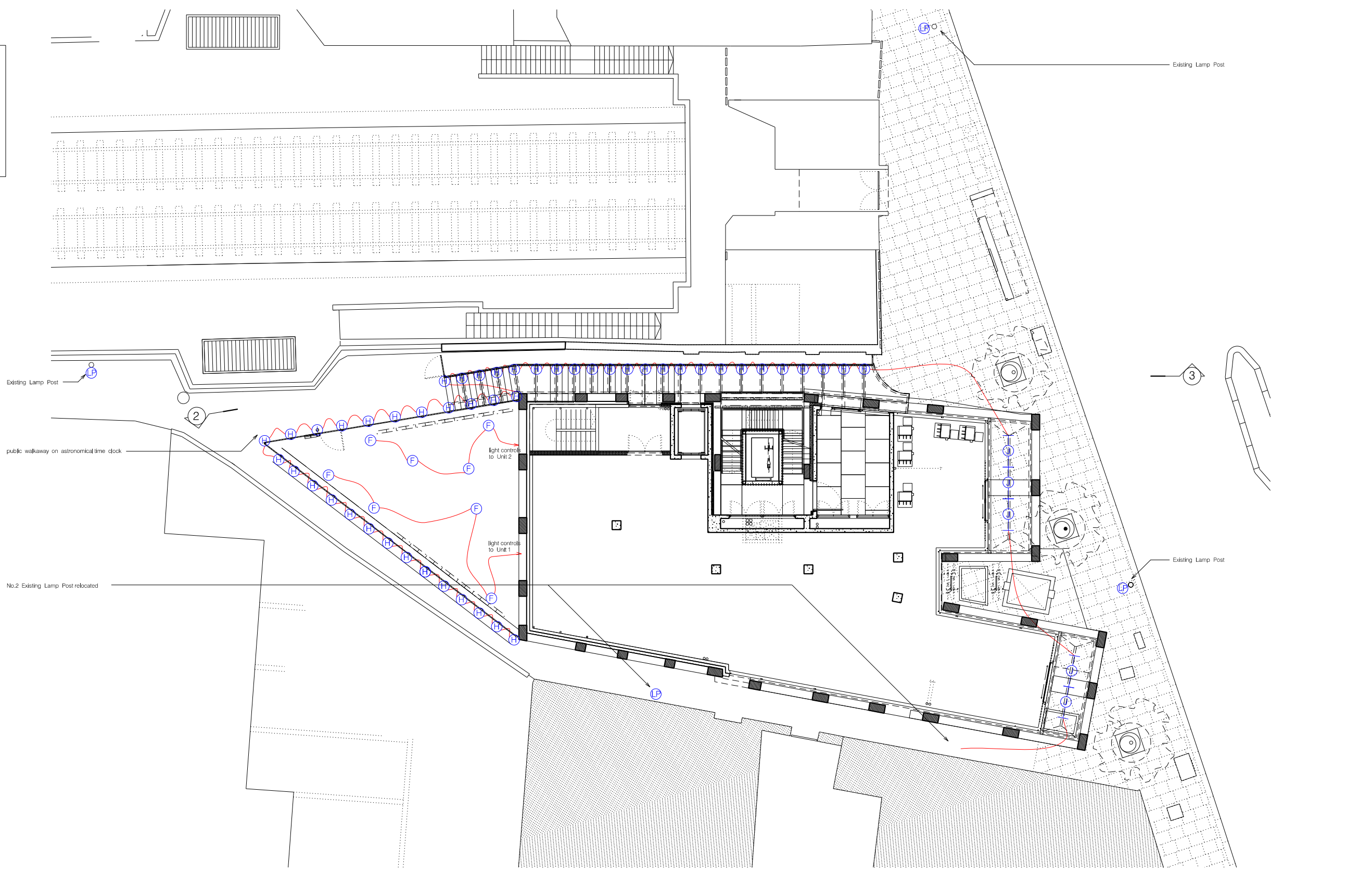
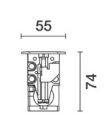
H
 Iguzzini LED_EG67
 - 21W 2550lm
 - 4000K CRI 80
 - Optic: wide flood 46/48
 - IP66
 - size: 611x47x77



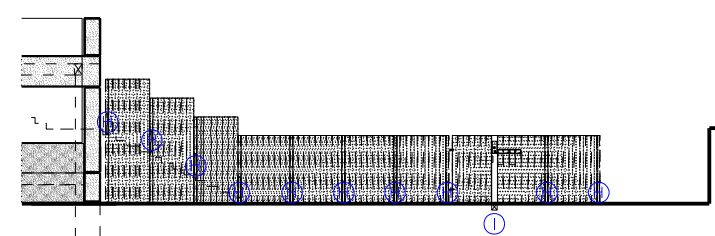
I
 Iguzzini LED_E122
 - 6.7W 750lm
 - 4000K CRI 80
 - D - diffused light
 - IP68
 - size: 144(cia.) x175



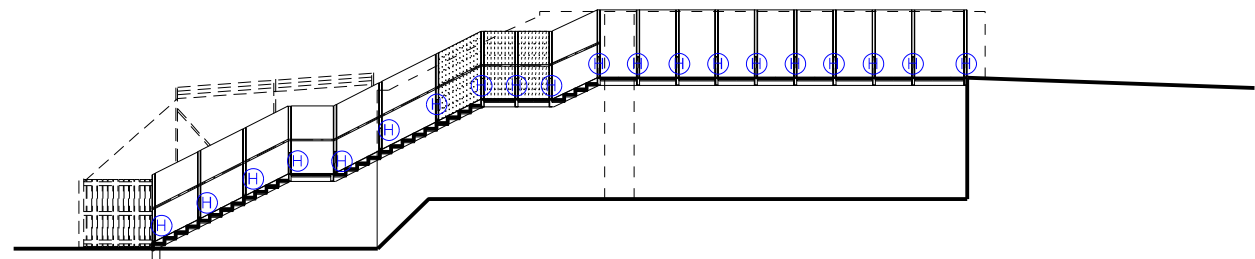
J
 Iguzzini LED_BW28
 - 20W 1860lm
 - 4000K CRI 80
 - Optic: flood 46
 - IP67
 - size: 1609x55x74



① PLAN



② ELEVATION



③ ELEVATION

REVISION:	PURPOSE:	DATE:	1. The design and these drawings are the sole copyright of Aelia Taha Architects, 15 Clerkenwell Close, London EC1R 9AA. T: 020 7253 9444 F: 020 7253 9595. 2. Do not scale from this drawing in either paper or digital form. Use written dimensions only. To check drawing has been printed to the intended scale file should be 50mm long @A1	Information: □ Comment □ Revising □ Tender □ Construction	CLIENT:	PROJECT:	DWG TITLE:	REVISION:	DATE:	SCALE:
A	ISSUED FOR PLANNING	19.04.2018		GROUPWORK 12 - 13 CLERKENWELL GREEN, LONDON, EC1R 0CJ	317 Finchley Road	317 Finchley Road London NW3 6EP	Public Realm - Lighting & Small Power	C	NOV 21	@ A1 1:100 @ A3 1:200
B	ISSUED FOR PLANNING	07.11.2018			DWG No: 240 - 1064	PURPOSE OF ISSUE: P	DK	AT		
C	ISSUED FOR PLANNING	26.11.2021								