

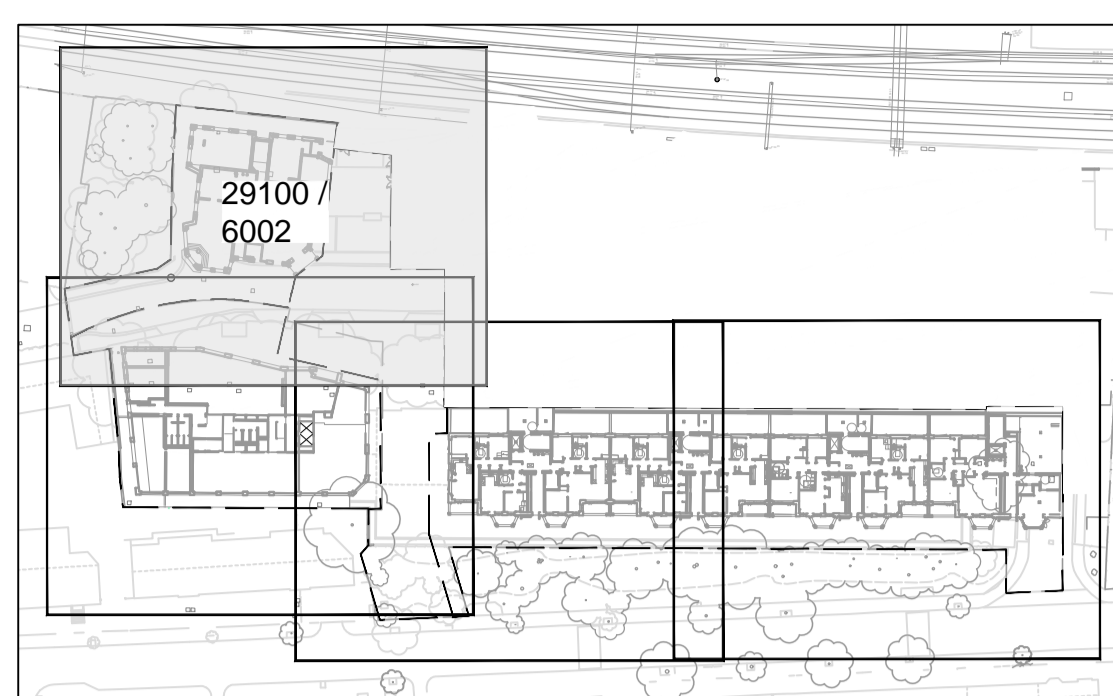
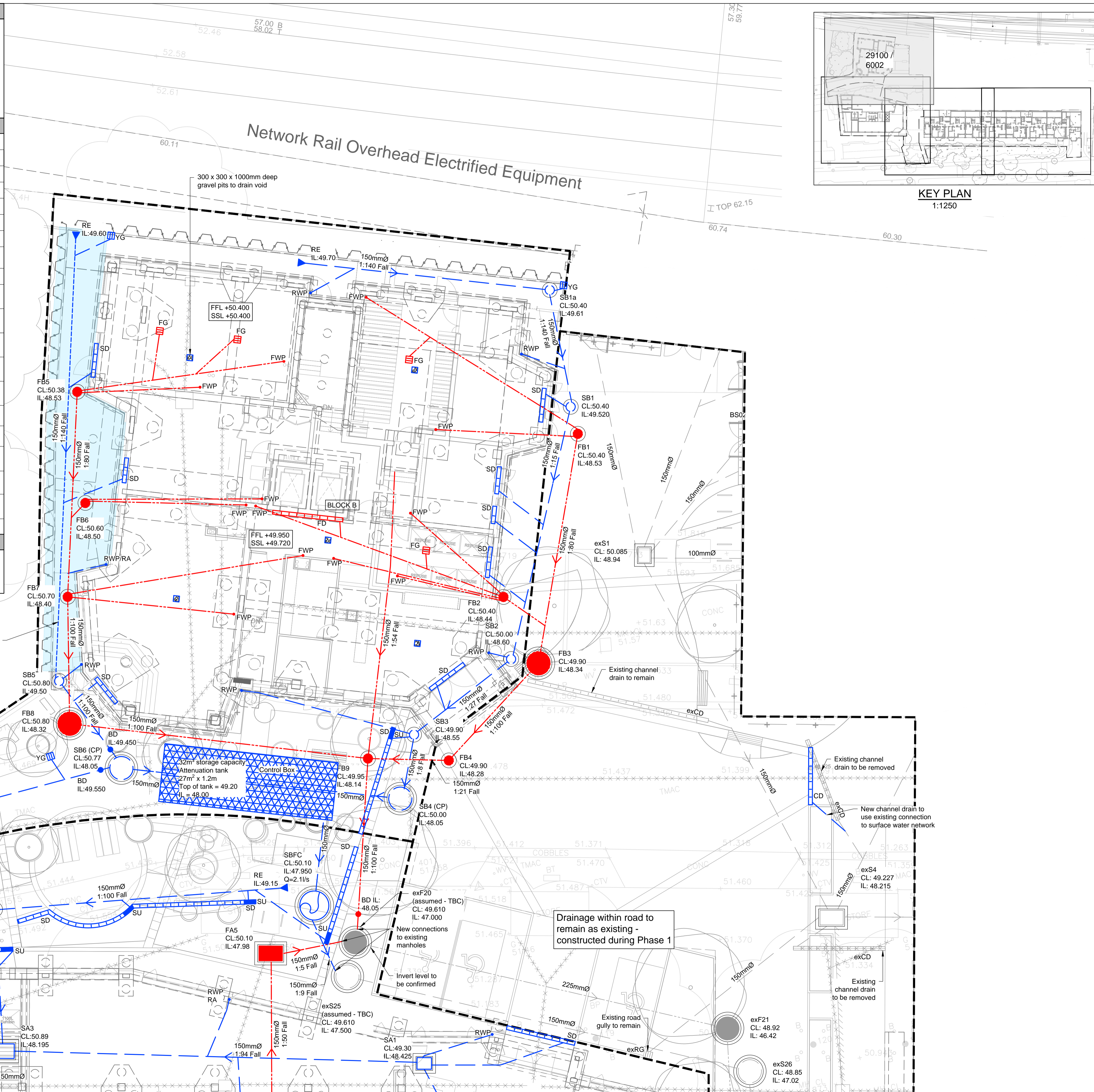
DRAINAGE LEGEND	
New FW Drain	
New SW Drain	
Perforated pipe	
Existing SW Drain	
Existing FW Drain	
Existing Rising Main	
Demolished/Abandoned	
Assumed Site Boundary	

DRAINAGE KEY	
	RWP Rainwater Down Pipe
	FWP Foul Waste Pipe
	SCD Shower Channel Drain
	FD Foul Channel Drain
	CD Channel Drain
	SD Slot Drain
	exCD Existing Channel Drain
	BD Backdrop inlet to manhole with invert level of rodding access
	RE Rodding Eye
	S1 Surface Water Manhole Chamber
	F1 Foul Water Manhole Chamber
	SFC Flow Control Chamber (SW only)
	exS1 Existing Surface Water Manhole Chamber
	exF1 Existing Foul Water Manhole Chamber
	FG Floor Gully
	exRG Existing Road Gully
	Attenuation Cells
	Permeable paving
	RHT Rainwater Harvesting Tank
	Gravel Drainage Pit

ABBREVIATIONS	
IL	- Invert Level
CL	- Cover Level
SU	- Sump Unit
RA	- Rodding Access
CP	- Catchpit



- NOTES :**
- This drawing is to be read in conjunction with all relevant Architect's, Engineer's and specialists' drawings and specifications.
  - Do not scale from this drawing in either paper or digital form. Use written dimensions only. To check that this drawing has been printed to the intended scale this bar should be 50mm long @ A1 or 25mm long @ A3.
  - Health & Safety : All specific drawing notes are to be read in conjunction with the project "Information Pack" and "Site Rules".
  - For general notes refer to Drawing No. 29100 / 0002.
  - All existing drainage within access road TBC on site. References taken from Phase 1 drainage layout. Levels taken from as-built topographical survey (917508, Jan 2018)

Rev	Date	Drawn	Eng	Amendment
P05	28.10.21	AC	KB	Issued for Stage 3
P02	22.10.21	AC	KB	Contract Issue
P01	16.08.21	AC	KB	Issued for Information

**LIDDELL ROAD - PHASE 2**

**BELOW GROUND DRAINAGE  
BLOCK B  
SHEET 2**

Status  
**STAGE 3 ISSUE**  
NOT FOR CONSTRUCTION

Drawn	AH	Eng	KB
Scales	1:100 at A1	1:200 at A3	
Drawing No	Rev		
	29100 / 6002	P03	
Doc Ref.	29100-PAM-ZZ-XX-DR-C-6002		

**PRICE & MYERS**  
Consulting Engineers  
37 Alfred Place  
London  
WC1E 7DP  
020 7631 5128  
mail@pricemyers.com  
www.pricemyers.com