

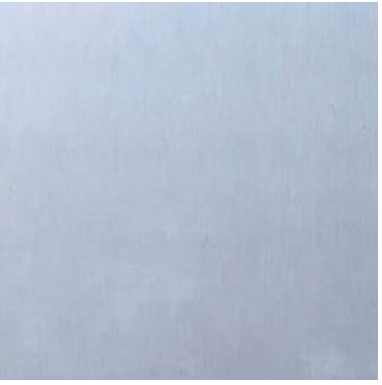
PROPOSED MATERIALS



Westbere Road Elevation  
*Not to scale*



01 Metal dormer, standing seam zinc or aluminium cladding



02 Red bricks to Westbere road elevation, with stacked vertical and horizontal brick bonds at ground floor  
*Image to right: Flower Michelin Architects*



03 New aluminium framed glazing and metal railings, RAL colour tbc  
*Image: Fleet House, Stanton Williams*