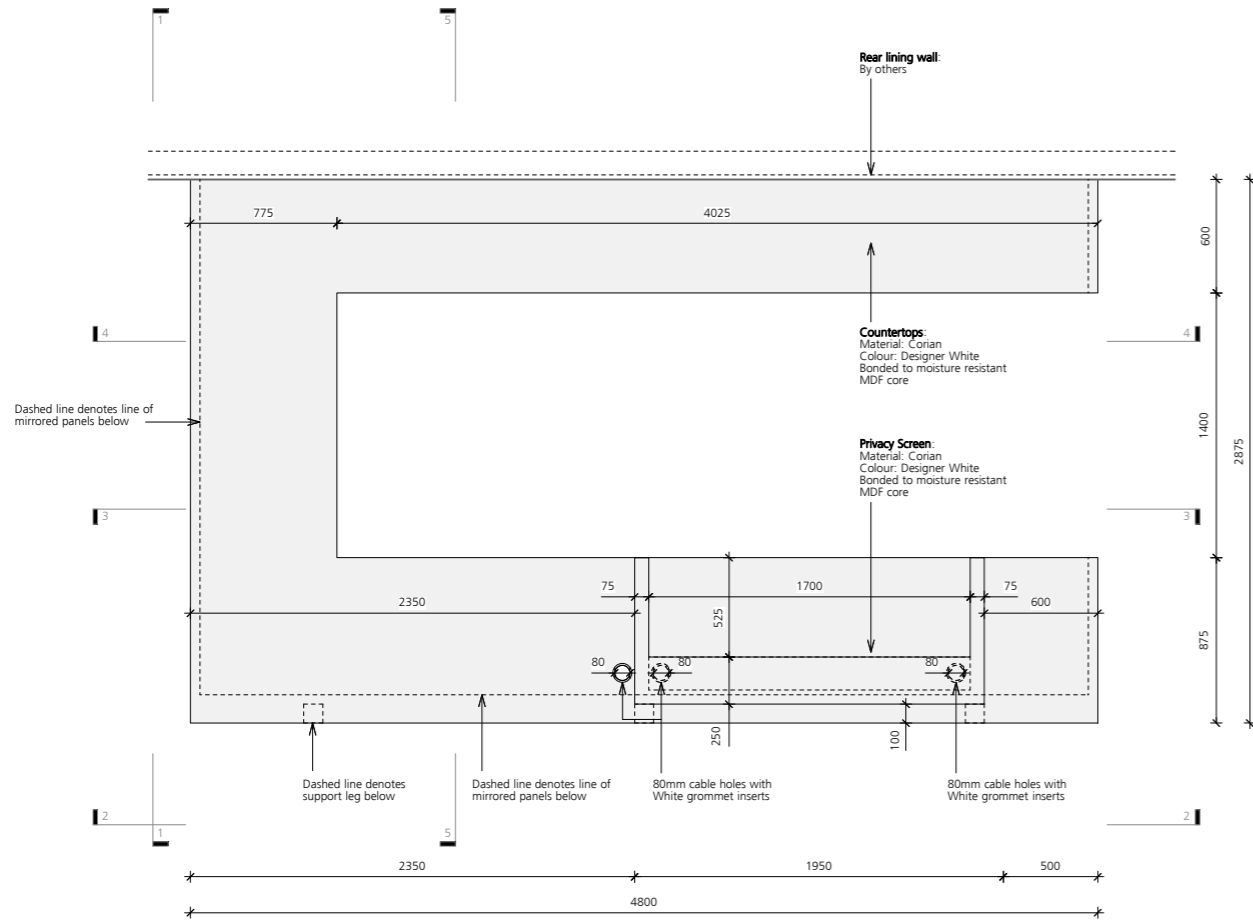
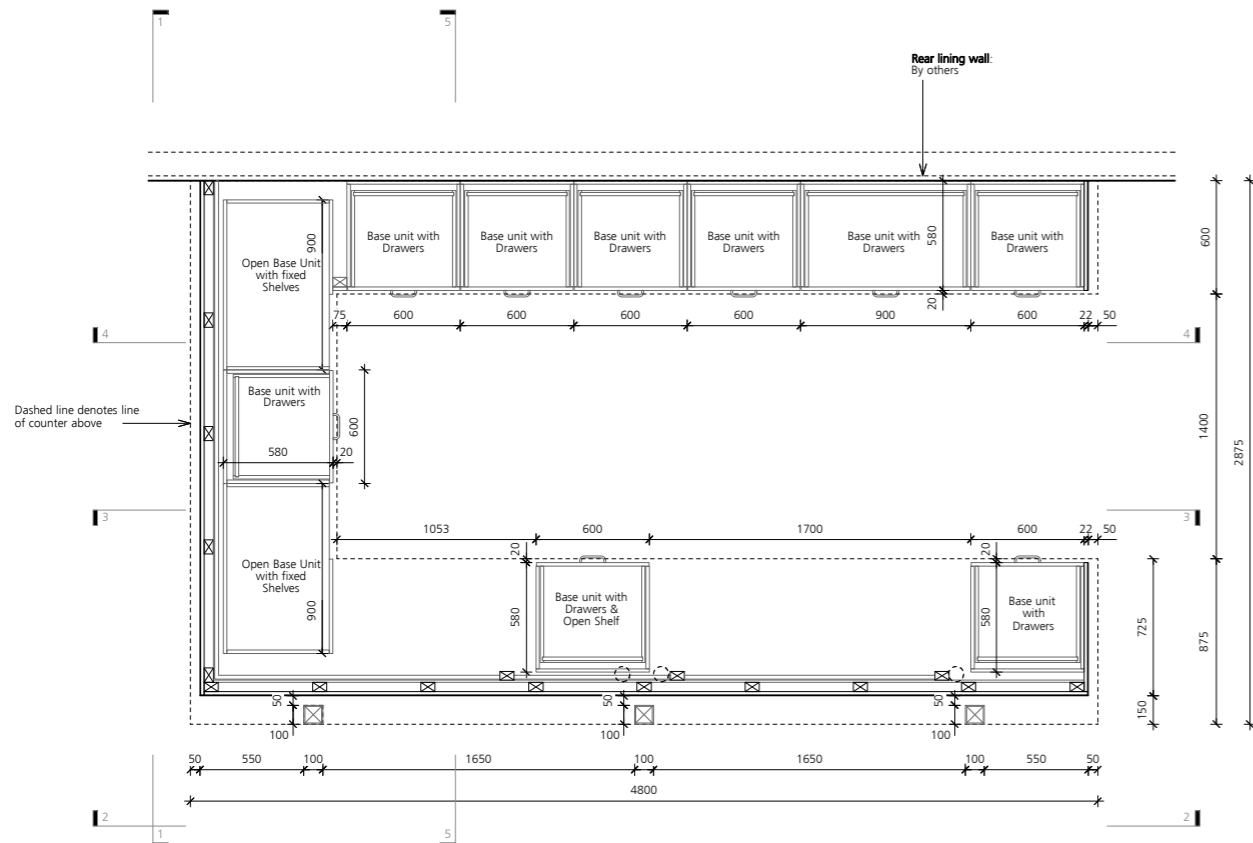


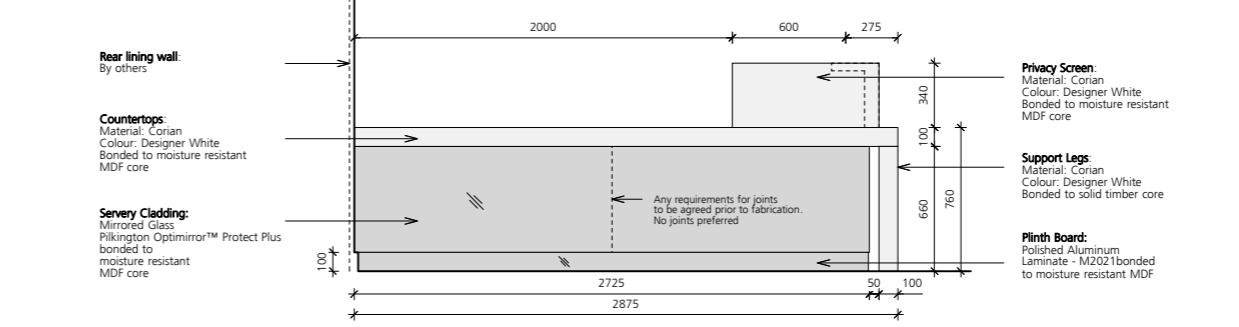
PLAN 1 - COUNTER LEVEL



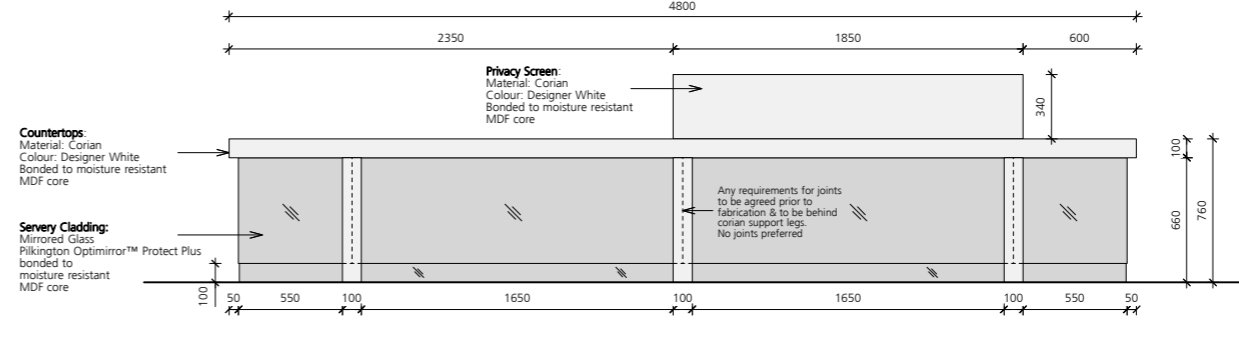
PLAN 2 - UNDER COUNTER LEVEL



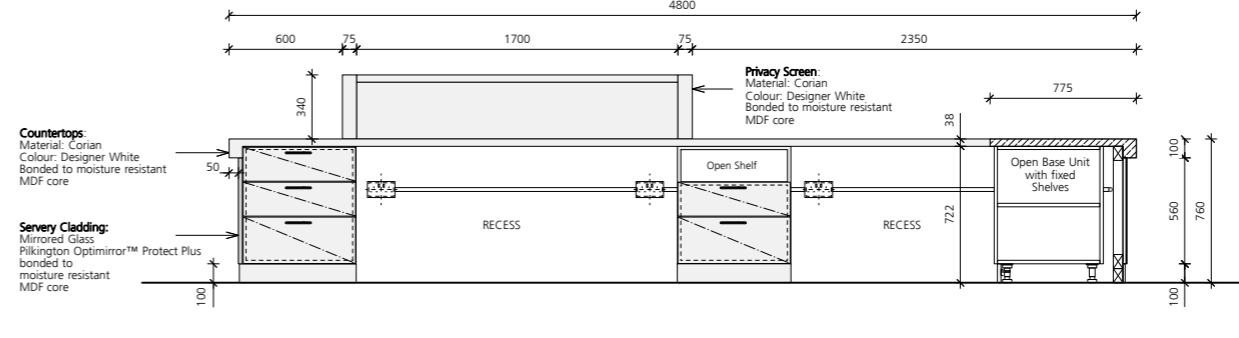
ELEVATION 1



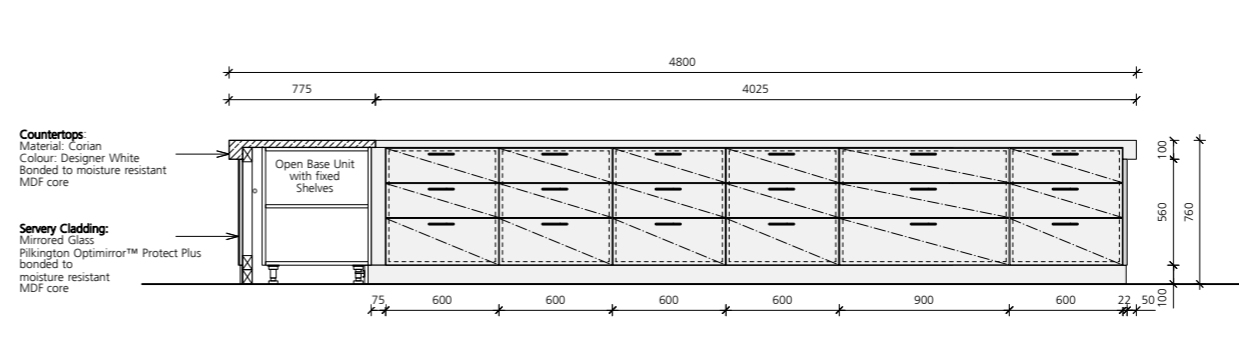
ELEVATION 2



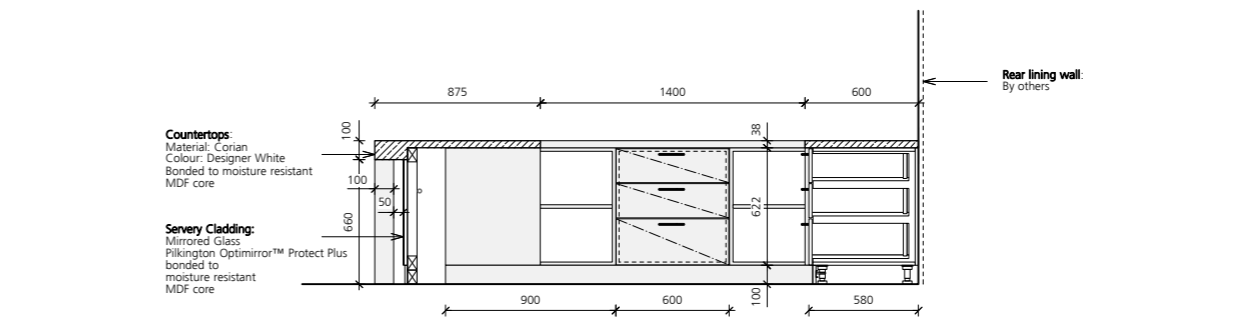
ELEVATION 3



ELEVATION 4



ELEVATION 5



NOTES

All dimensions are from structure to structure unless indicated otherwise.

Elements of structure and services are indicated for coordination purposes only. For full structural and services layouts refer to Structural and Services Engineers' drawings.

Do not scale directly from the drawing. All dimensions to be checked on site prior to construction or fabrication of any elements.

Any discrepancies between figured dimensions to be reported to the architect for clarification prior to commencing work.

For legend see signature sheet 112\_C028\_001.

© Copyright Reserved

Rev	Date	Comments
-	-	-

FINISHES

**Countertops & Privacy Screen:**  
12mm solid surface composite sheet bonded to moisture resistant MDF core.  
Colour: Designer White  
Material: Corian

**Support Legs:**  
12mm solid surface composite sheet bonded to solid timber core.  
Colour: Designer White  
Material: Corian

**Reception Desk Cladding:**  
Pilkington Optimirror™ Protect Plus bonded to moisture resistant MDF core

**Plinth Board:**  
Polished Aluminum Laminate - M2021 by Formica bonded to moisture resistant MDF

**Base Units, Doors, Drawers Shelves & Cover Panels:**  
18mm MFC - Matt White to match Corian countertops

**Handles:**  
D Handle - steel - Matt Black by Häfele

TONY FRETTON ARCHITECTS

Tony Fretton Architects Ltd  
Highgate Studios, 53-79 Highgate Road, London NW5 1TL  
T+44 (0)20 7284 2000, F+44 (0)70 1197 5379  
mail@tonyfretton.com, www.tonyfretton.com

Job No:	298
Project:	Camden Arts Centre - Bookshop
Drawing title:	Reception Desk Plans & Elevations
Scale:	1:20 @ A1 & 1:40 @ A3
Origination Date:	Jan, 2022
Status:	Planning
Drawing No:	298_PL_701
Rev	-