

**WG/02, WG/08**  
**Internorm HS330 Sliding Doors**

Material: Aluminium/ timber composite (aluminium externally)  
U-Value: 0.73Wm²k  
External colour: RAL7022 Umbra Grey - MATTE  
Internal wood: Walnut  
Sound reduction: 40dB  
Set-back: 50mm  
Security: Secured by Design & PAS 24

Rubber bonded edge trim. Trim to be kept as minimal as possible, and be level horizontally across length of lightwell

Rubberfuse Dark Grey TPO membrane (final spec tbc by supplier), to be applied to walls around rear sliding doors

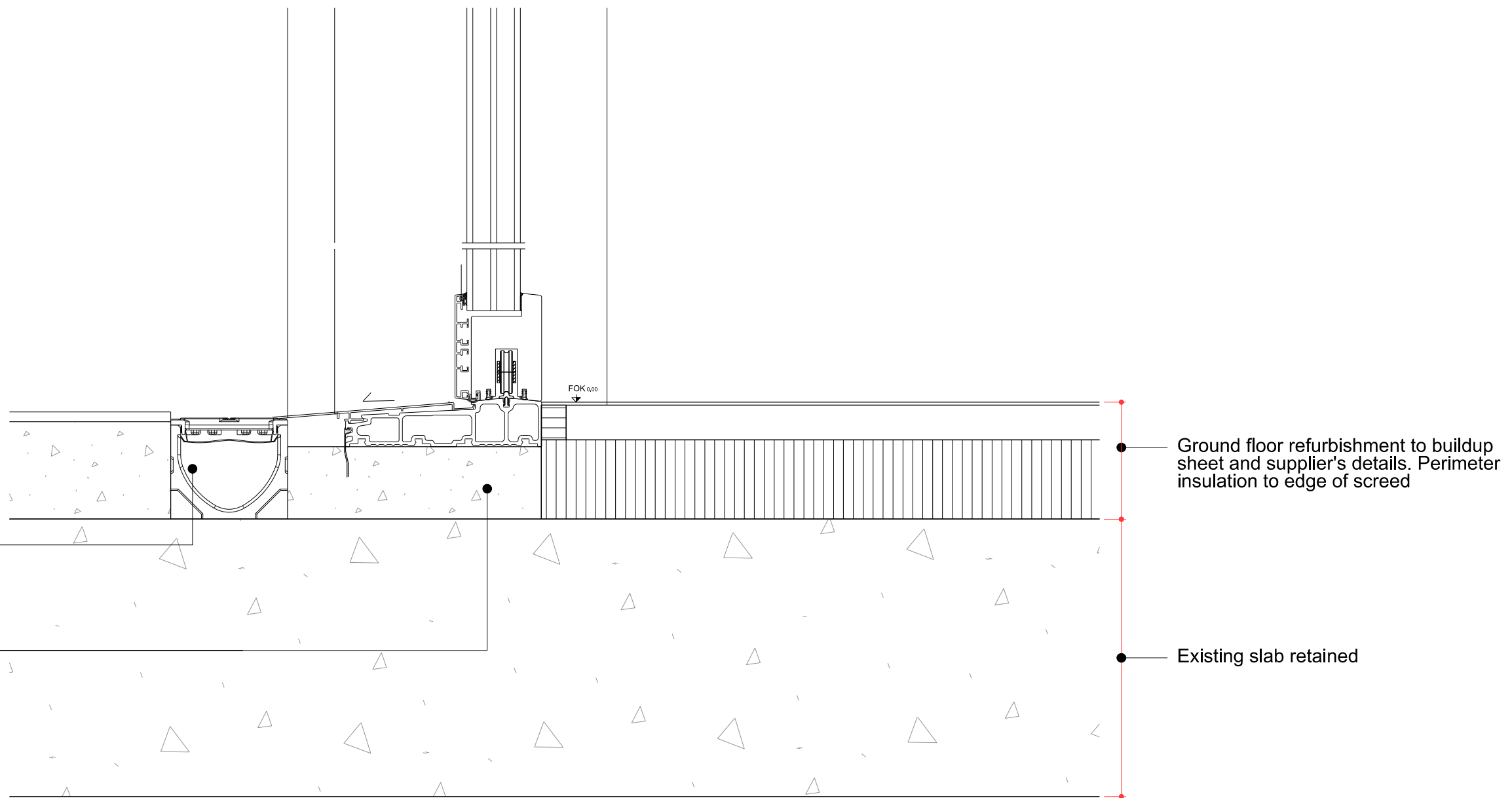
100mm Kingspan Kooltherm K5 board (final spec tbc by roofing contractor)

Void behind rigid insulation (created by difference between blockwork wall depth and steel) to be filled with rigid insulation/ timber packers

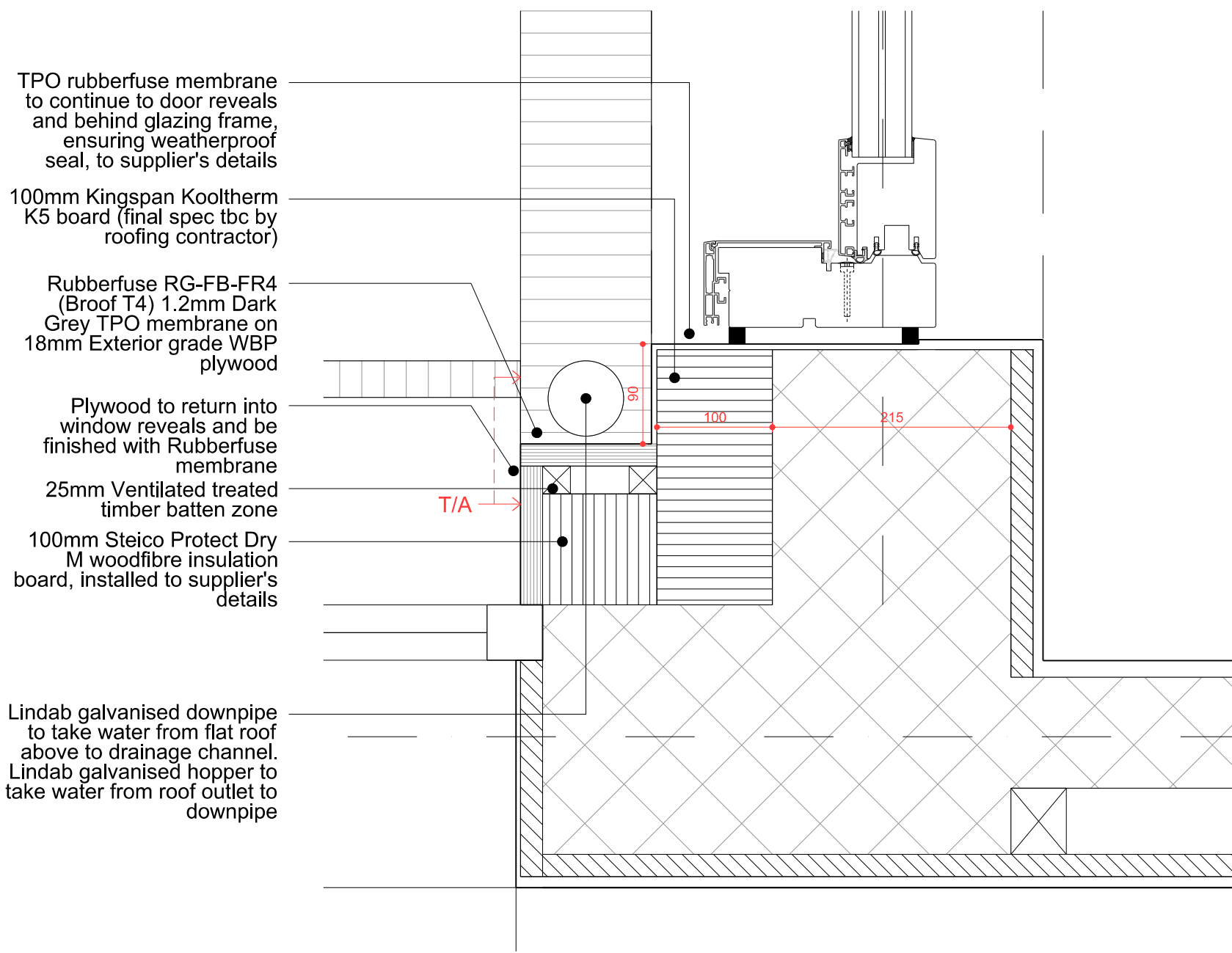
Steelwork to structural engineer's details. Steel to be treated with intumescent paint to ensure min 60 minutes fire integrity

TPO rubberfuse roofing to continue to underside of rigid insulation and between door head and timber packers, ensuring weatherproof seal, to supplier's details

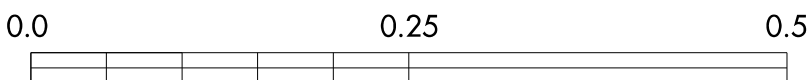
**D10 Detail**  
Sliding doors head



**D11 Detail**  
Sliding doors track



**D9 Detail**  
Plan extract showing sliding door detail



**Notes**

All works to be in accordance with Current building regulations and to be Read and constructed in conjunction with a schedule of works document and structural engineer's information. All demolition to be approved by structural engineer prior to commencement.  
All dimensions, existing levels, drain runs and site conditions to be verified on site by contractor prior to construction, and any discrepancies made known. Re-routing of existing and running of new drainage to be to contractor's design.  
Re-routing of existing and running of new drainage to be to contractor's design.  
Drawings are issued for planing purposes (not construction).

Copyright studio hatcham 2022

Revision:  
Rev.Date Desc.  
\* 04.01.22 Information Issue

**80 Lamble Street**

London  
NW5 4AB

**Typical Sliding Door  
Details (WG/02,  
WG/08)**

Drwg **0072\_31\_62**  
Rev \*  
Scale **1:5@A1  
1:10@A3**

**S T U D I O H A T C H A M**

www.studiohatcham.com info@studiohatcham.com