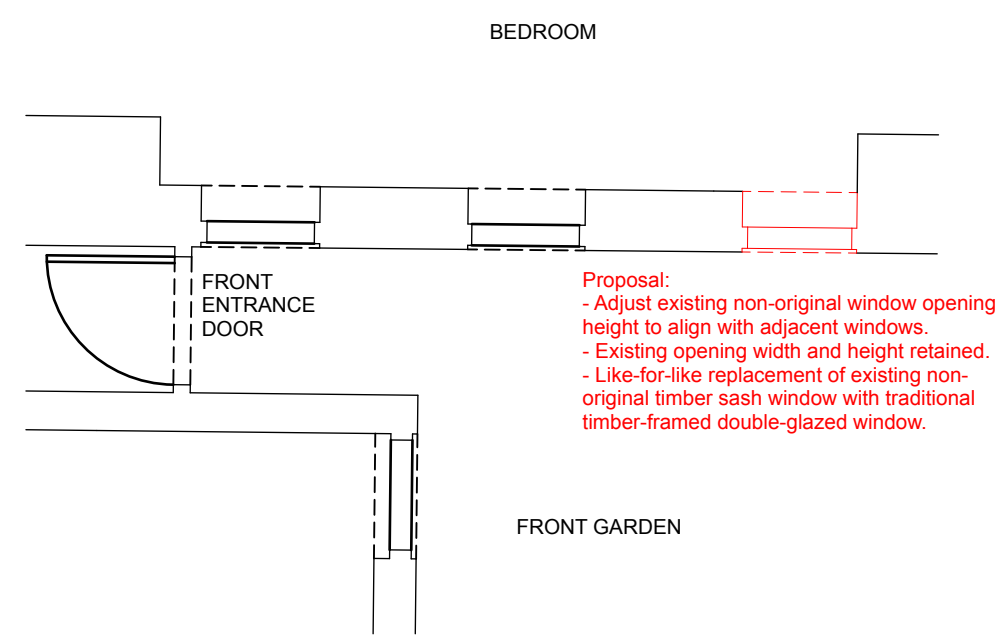
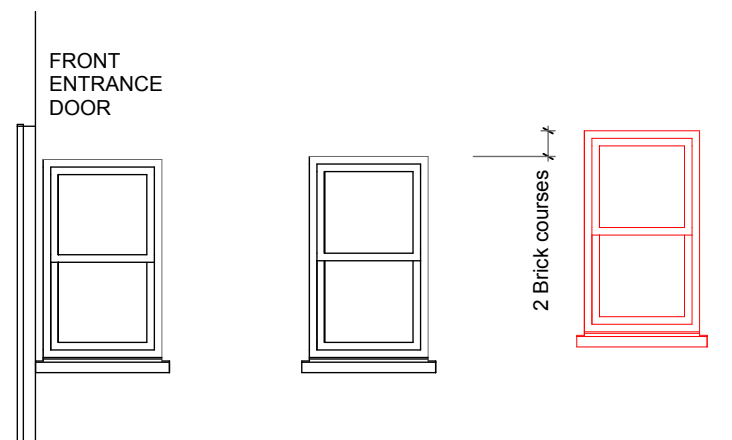


Existing Floor Plan @ entrance to lower ground floor flat_1:50



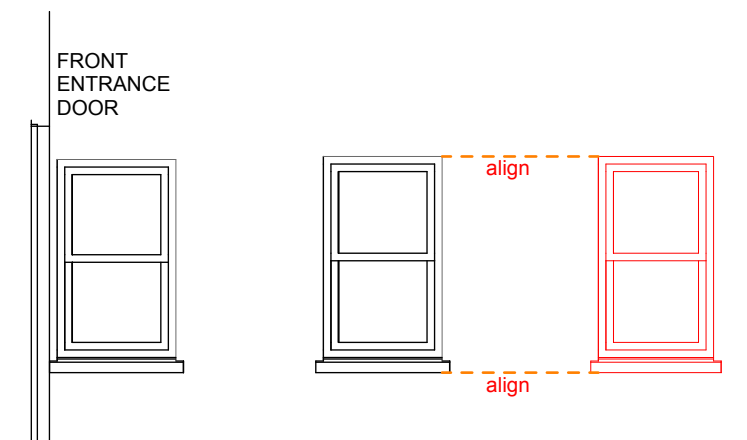
Proposed Floor Plan @ entrance to lower ground floor flat_1:50

Proposal:
 - Adjust existing non-original window opening height to align with adjacent windows.
 - Existing opening width and height retained.
 - Like-for-like replacement of existing non-original timber sash window with traditional timber-framed double-glazed window.



Existing non-original window and opening not aligned with adjacent openings

Existing Side Elevation @ entrance to lower ground floor flat_1:50



Proposal:
 - Adjust existing non-original window opening height to align with adjacent windows.
 - Existing opening width and height retained.
 - Like-for-like replacement of existing non-original timber sash window with traditional timber-framed double-glazed window.

Proposed Side Elevation @ entrance to lower ground floor flat_1:50

General Notes:
 Do not scale from this drawing.
 All dimensions in metres/millimetres.
 All dimensions to be checked by the Contractor.
 Any discrepancies to be notified to the Architect.



Figure 1 Architects
 www.fig-1.com
 101 Heath Street
 London NW3 6SS, UK
 +44 (0) 7813175721

| | | |
|-------------------------|----------------|--|
| 8 Belsize Park, NW3 4ET | | Drawing Number: 2103_L501 |
| | | Existing and Proposed Side Plan and Elevations |
| | | Status: Planning |
| Drawn by: LK | Date: 11.01.22 | Rev: - |
| | | 1:50 @A3 |