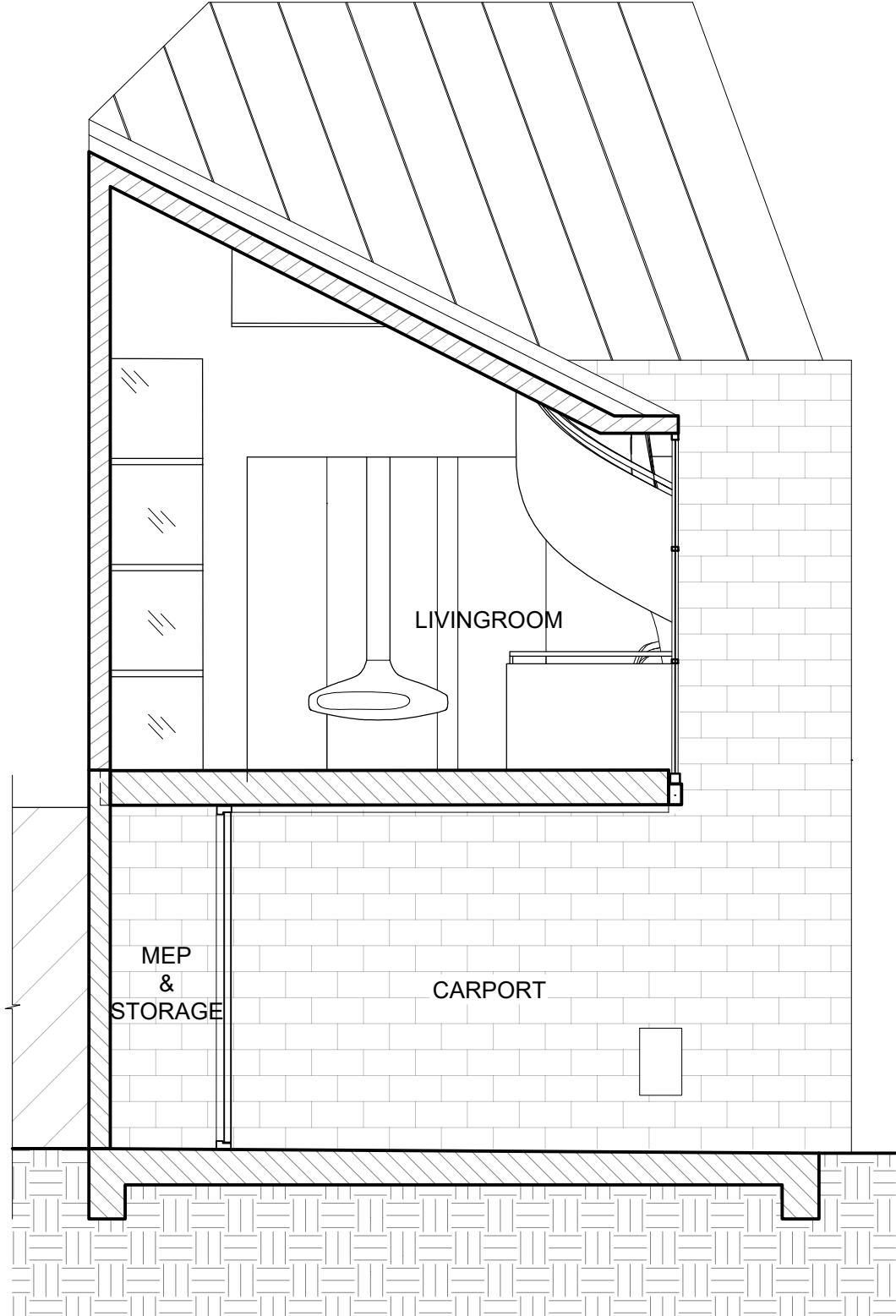
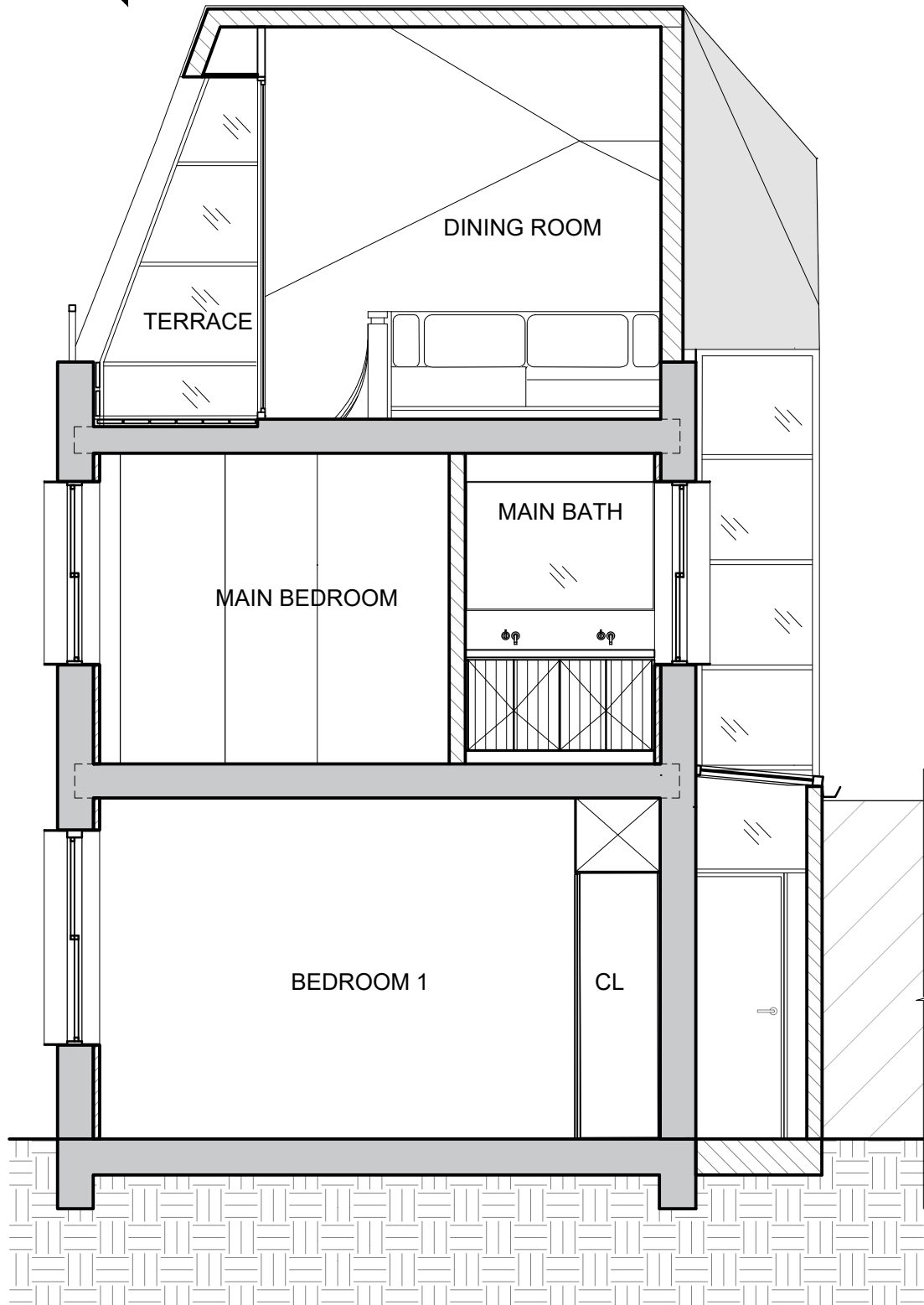


[+5680]
2ND FLOOR

[+2960]
1ST FLOOR

[+0.00]
GROUND FLOOR



DRAWING LEGEND

- | | | | | |
|-------------------------------|-----------------------------|-------------------------------------------|---------------------------|---------------------------|
| EX. MASONRY
WALL TO REMAIN | NEW WALL:
CONCRETE BLOCK | NEW WALL:
MASONRY
TO MATCH EXISTING | NEW WALL:
PREFAB PANEL | NEW INTERIOR
PARTITION |
|-------------------------------|-----------------------------|-------------------------------------------|---------------------------|---------------------------|

NOTES

1. VERIFY ALL DIMENSIONS IN FIELD
2. DO NOT SCALE DRAWINGS. WRITTEN DIMENSIONS GOVERN. LARGE SCALE DRAWINGS GOVERN OVER SMALL SCALE DRAWINGS
3. FOR ANY DISCREPANCIES, NOTIFY ARCHITECT FOR CLARIFICATION
4. ALL WORK SHALL COMPLY WITH THE RULES AND REGULATIONS OF THE CITY OF LONDON, ENGLAND, AND ALL OTHER AUTHORITIES HAVING JURISDICTION
5. CONTRACTOR SHALL OBTAIN AND PAY FOR ALL PERMITS AND APPROVALS AS REQUIRED PRIOR TO START OF WORK
6. SEE FINISH SCHEDULE FOR ALL FINISHES
7. ALL REQUIRED EXITS SHALL BE MAINTAINED FREE FROM OBSTRUCTIONS AND IMPEDIMENTS FOR EGRESS IN CASE OF FIRE OR OTHER EMERGENCY
8. DURING THE ENTIRE PERIOD OF CONSTRUCTION, ALL EXISTING EXITS, EXISTING LIGHTING, FIRE PROTECTIVE DEVICES AND ALARMS SHALL BE CONTINUOUSLY MAINTAINED, AND PROTECTED
9. FOR ALL STRUCTURAL INFORMATION AND DIMENSIONS, SEE STRUCTURAL ENGINEERING DRAWINGS AND SPECIFICATIONS
10. FOR ALL MECHANICAL INFORMATION AND DIMENSIONS, SEE MECHANICAL ENGINEERING DRAWINGS AND SPECIFICATIONS
11. FOR ALL ELECTRICAL INFORMATION AND DIMENSIONS, SEE ELECTRICAL ENGINEERING DRAWINGS AND SPECIFICATIONS
12. ALL NEW ENTRIES AND MEANS OF EGRESS TO HAVE MINIMUM 36" (90CM) DOORS
13. ALL PLANS CUT AT 4'-0" (120CM) A.F.F.
14. ALL PLAN DIMENSIONS TO INTERIOR PARTITIONS REFER TO FINISH FACE OF MATERIAL, EXCEPT WHERE DIMENSIONS REFERENCE GRID LINES. SEE PARTITION SCHEDULE AND INTERIOR ELEVATIONS
15. SEE WRITTEN SPECIFICATION FOR ALL DETAILED INFORMATION ABOUT CONSTRUCTION SYSTEMS
16. DRYWALL PARTITIONS: USE CORNER BEADS (TYP) + WATERPROOF GWB/CEMENT BOARD AT ALL WET LOCATIONS. USE MOLD RESISTANT GWB AT ALL EXTERIOR WALLS.
17. USE WATERPROOF LIGHT FIXTURES FOR WET SPACES (TYP)
18. ALL GLASS, WINDOWS AND RAILINGS TO COMPLY WITH LOCAL CODE, TO BE ENGINEERED BY INSTALLER
19. CONTRACTOR TO PROVIDE SHOP DRAWINGS OF ALL CUSTOM MILLWORK FOR ARCHITECTS REVIEW AND APPROVAL
20. CONTRACTOR TO PROVIDE COORDINATED SHOP DRAWINGS OF MECHANICAL, PLUMBING AND ELECTRICAL WORK

Design	ARCHI-TECTONICS NYC, LLC 111 John Street, Suite 700 New York, NY 10038 United States of America +1 212 226 0303
Architect of Record	AY ARCHITECTS 31 A Leighton Grove London NW5 2QP United Kingdom +44 20 7267 6660
Structural Engineer	AKTI White collar factory, 1 Old Street Yard London EC1Y 8AF United Kingdom +44 20 7250 7777
MEP Engineer	WSP 70 Chancery Ln London WC2A 1AF United Kingdom +44 20 7314 5000

ISSUE RECORD		
04		
03		
04		
03		
02		
01	24.12.21	REVISION A - SIDE EXTENSION REVISED

ARCHI-TECTONICS
111 JOHN ST, NY, NY 10038 TEL: (212)226-0303 studio@archi-technics.com

project:	LONDON TOWNHOUSE
project #:	2009
drawing:	PROPOSED SECTION SHORT
scale:	1:50
date:	6TH AUGUST 2021
sheet:	A-412.01

© Archi-Tectonics

