

**Apt**

**Medius House**  
Planning Condition 5

17 September 2021

Project Title Medius House	Project Number 18013
Document Name Planning Condition 5	Date 17 September 2021
Status Approved for issue	Revision 01
Author RLF	Reviewed by RLF

Contents

1.0  
Introduction

Purpose of the Document

5

2.0  
Samples of Materials

External light fittings  
CCTV

7

8

3.0  
Material Locations

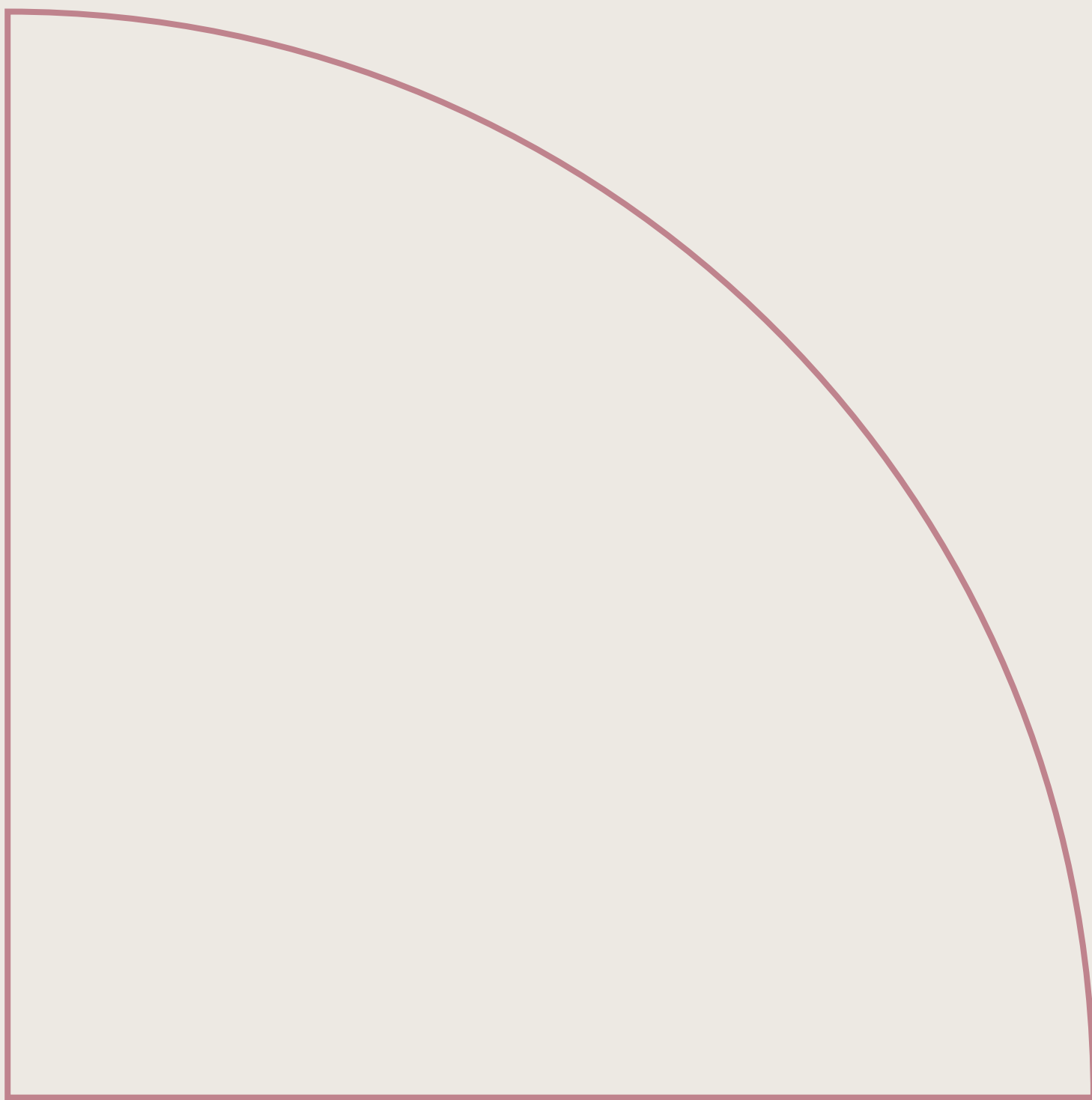
L01 Plan  
L06 Plan  
L07 Plan  
L08 Plan

10

11

12

13



# 1.0

## Introduction

## Purpose of the Document

This document presents the particulars of CCTV and external light fittings proposed to be used on the external areas of Medius House, in line with the requirements of Condition 5, as highlighted below.

This report will be seeking a discharge of the above condition for the proposed fittings.

### Planning Condition No. 5 - CCTV and external lighting

*Prior to installation, details of all proposed CCTV and external lighting shall be submitted to and approved in writing by the Local Planning Authority. The approved details shall be implemented prior to the occupation of the relevant part of the development and retained as such there after.*

-

In light of the current pandemic situation, this report has been provided to give pictures of the samples in lieu of a physical sample panel - all samples are on site if the relevant parties require in-person inspection.





# 2.0

## Samples of Materials



External light fittings



orlight®  
FROM SOURCE TO SITE

REFERENCE: H  
ORLLM88-1-SS-3000K

ORLLM88-1 - Marine Grade One-Way Led Fixture

Description

Marine grade 316 stainless steel in-ground single marker light complete with integral CREE LED package. Fixture rated to IP68 with single aperture for asymmetric emission. Configured to 40 degree beam as standard, product functions with 350mA constant current driver. Inline driver options include switched, 1-10V and DALI dimmable solutions.

Dimensions

Polar Report

Specifications

Chipset	5000 - CREE
Dimming Options	Switchable
Power Consumption	3W
Voltage	24V
Colour Temperature	3000K
Light Output	240lm
lm Per Watt	80lm/W
CRI	95
Beam Angle	40°
Beaming	4.5deg MacAdams Ellipse
Case Life TM-21	50,000 hours
IP Rating	IP68
IK Rating	IK10
Touch Temperature (Glass)	44.5°C
Touch Temperature (Body Casing)	44.2°C
Operating Amba Temp	25-50°C
Max Surface Operating Temp	65°C
Weight	0.05kg
Finish	316 Marine Grade Stainless Steel

Colourmetrics

R1	R2	R3	R4	R5	R6	R7	R8	R9	R10	R11	R12	R13	R14	R15	R16	R17	R18	R19	R20
0.1	0.2	0.3	0.4	0.5	0.6	0.7	0.8	0.9	1.0	1.1	1.2	1.3	1.4	1.5	1.6	1.7	1.8	1.9	2.0

Product Coding: Example: ORLLM88-1-SS-3000K

CODE

FINISH

COLOUR TEMP

DIMMING OPTION

DRIVERS

ORLLM88-1

316-STAINLESS STEEL

3000K

ND-TWITCH-08

ORLLM88-1-SS-3000K

5000K

1-10V

ORLLM88-1-SS-5000K

24V

ORLLM88-1-SS-24V

\*Refer to Accessories

Key

01. Floor recessed external light fitting

02 Wall mounted external light fitting

33 109

BEGA

Recessed luminaire

IP 65

Project - Reference number

Date

Product data sheet

Application

Unfired luminaire for installation in walls or slabs.  
Installation possible in horizontal or vertical burning position.

Product description

Luminaire made of aluminium alloy, aluminium and stainless steel.  
BEGA Tricoat® coating technology.  
Safety glass, white.  
Silicone gasket.  
Reflector made of pure anodized aluminium.  
Fixing is achieved by using two adjustable wedge-shaped clips.  
Required recessed opening 105 x 60 mm.  
Recessed depth 70 mm.  
2 cable entries for through-wiring of mains supply cable ø 7-10.5 mm.  
Connection terminal 2.5².  
Earth conductor connection.  
BEGA Ultimate Driver®.  
LED power supply unit.  
220-240 V ~ 50/60 Hz.  
DC 178-264 V.  
BEGA Thermal Switch®.  
Temporary thermal shutdown to protect temperature-sensitive components.  
Safety class I.  
Protection class IP 65.  
Due light and protection against water jets.  
Impact strength IK05.  
Protection against mechanical impacts < 0.7 joule.  
CE® - Safety mark.  
CE - Conformity mark.  
Weight: 0.35 kg.

Lamp

Module connected voltage 4 W.  
Luminaire connected voltage 5.1 W.  
Rated temperature L<sub>90</sub>=25 °C.  
Ambient temperature L<sub>90</sub>=40 °C.  
When installed in heat-insulating material L<sub>90</sub>=35 °C.

Installation

On request we can offer you modifications for environments with higher temperatures as a customized product.

33 109 K3

Module designation LED-0641/830.  
Colour temperature 3000 K.  
Colour rendering index CRI > 80.  
Module luminous flux 675 lm.  
Luminaire luminous flux 551 lm.  
Luminaire luminous efficiency 64.9 lm/W or 4000K.

33 109 K4

Module designation LED-0641/840.  
Colour temperature 4000 K.  
Colour rendering index CRI > 80.  
Module luminous flux 710 lm.  
Luminaire luminous flux 548 lm.  
Luminaire luminous efficiency 68.2 lm/W.

Service life - Ambient temperature

Rated temperature L<sub>90</sub>= 25 °C.  
LED plus > 50,000h.  
LED module 115,000h (L80B50).  
Ambient temperature L<sub>90</sub>= 40 °C (100 %).  
LED plus 50,000h.  
LED module 105,000h (L80B50).

Light technique

Luminaire data for the light planning program.  
DALI for outdoor lighting, street lighting and indoor lighting as well as luminaire data in ELMARK and E2-format you will find on the BEGA web page [www.bega.com](http://www.bega.com).

Apt Medius House

7

Planning Condition 5

## CCTV

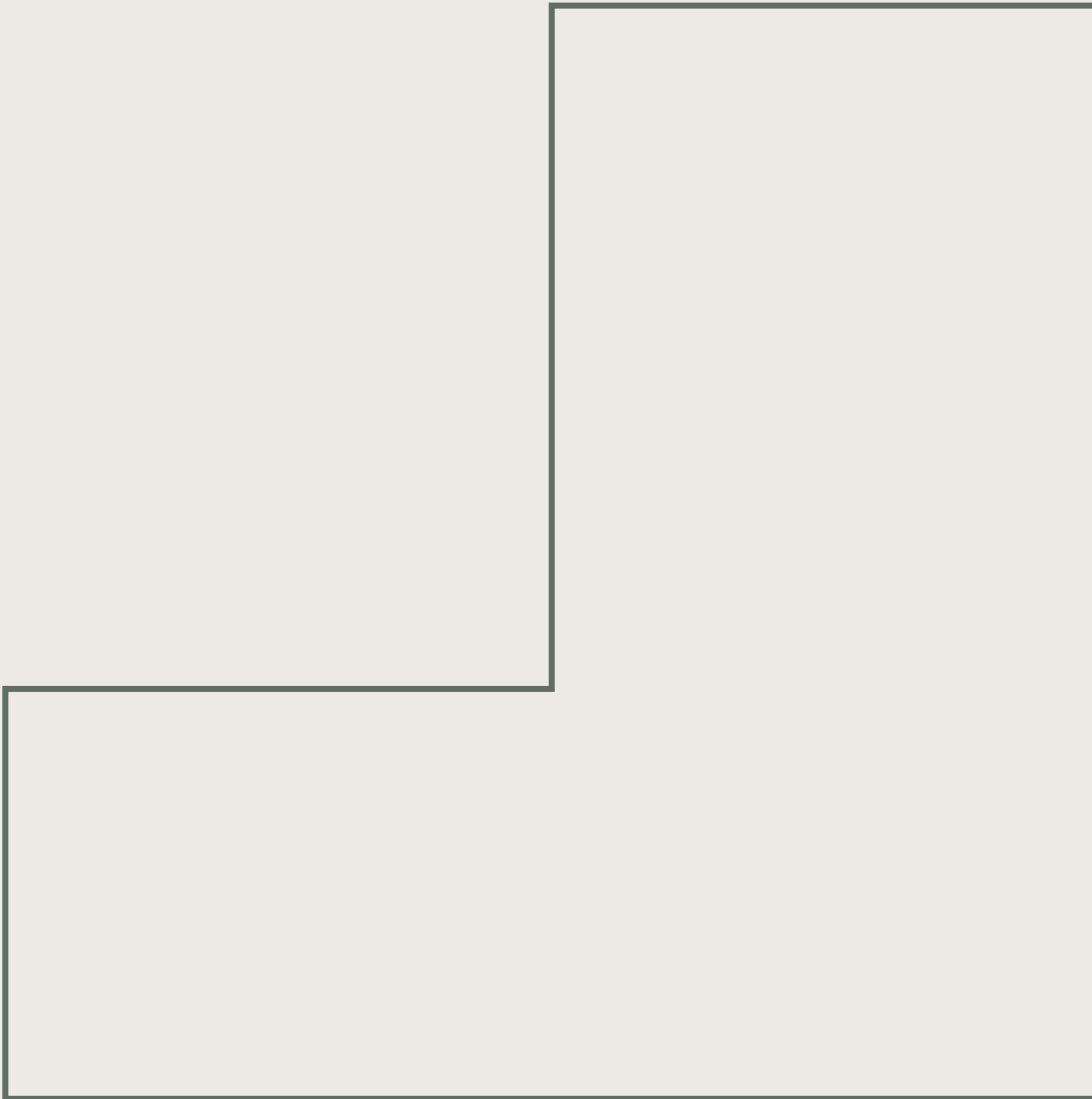
01



Key

01. CCTV

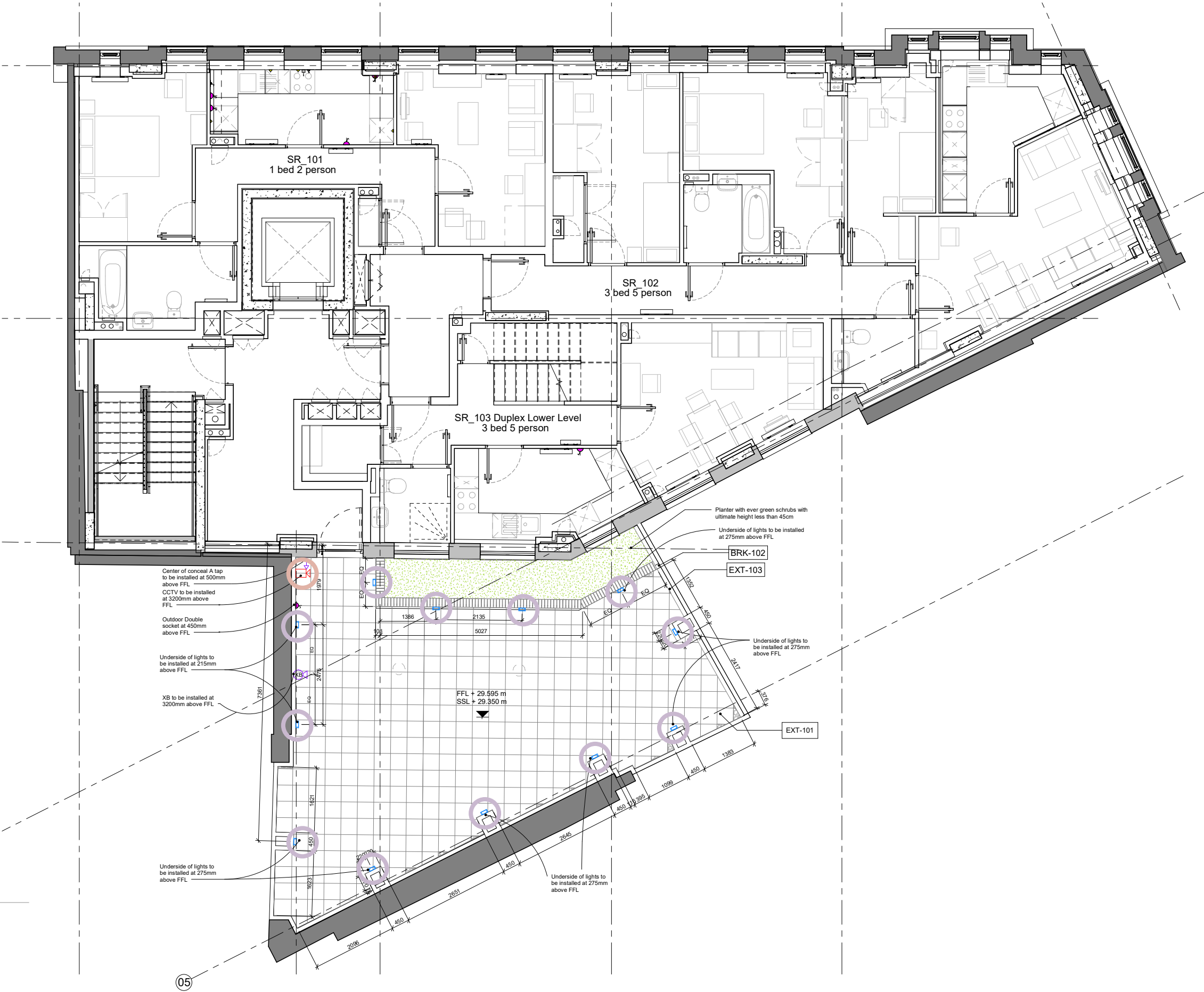




# 3.0

Material Locations

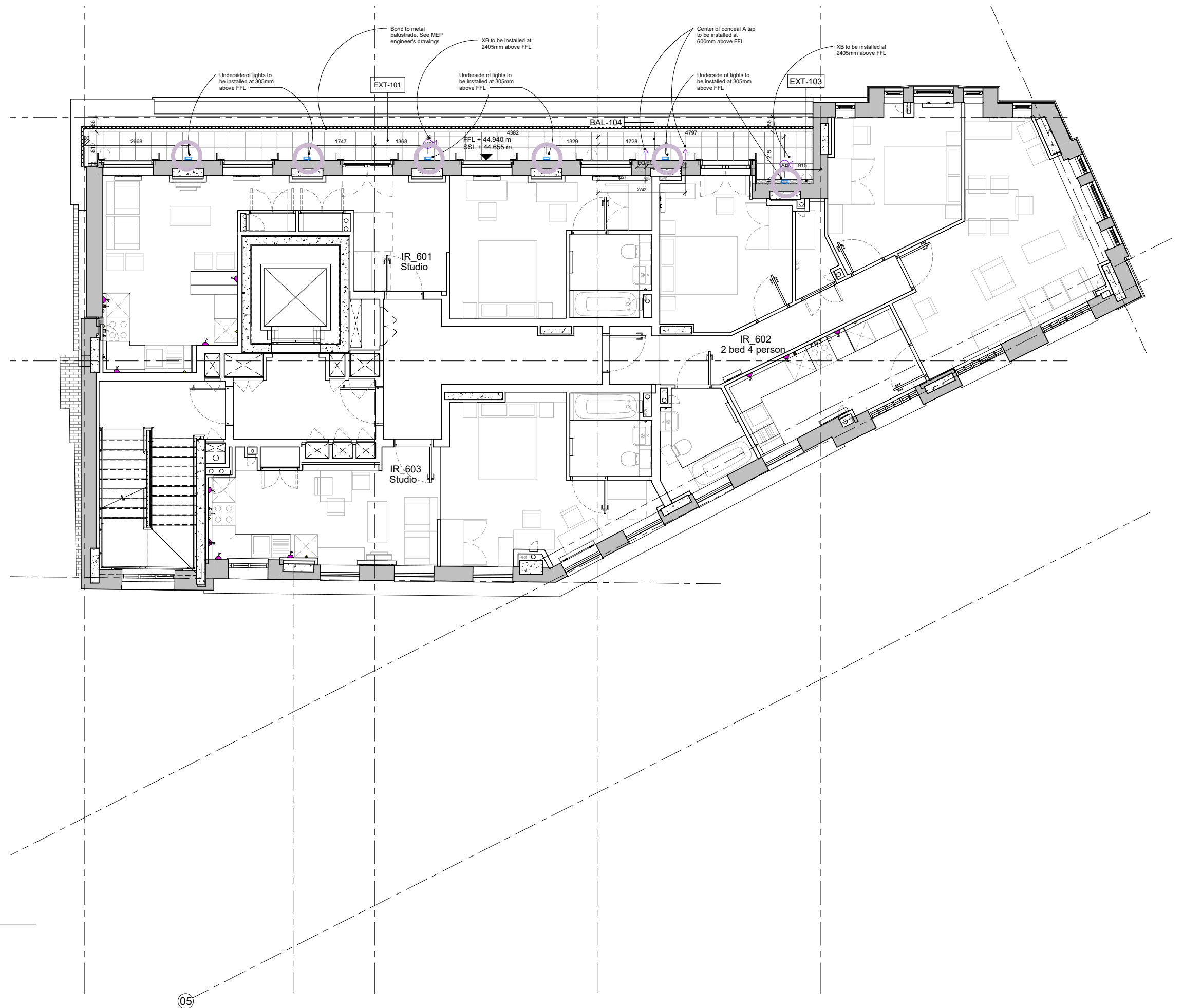
Level 01 Plan



Key

- CCTV
- Wall mounted light fitting
- Floor recessed light fitting

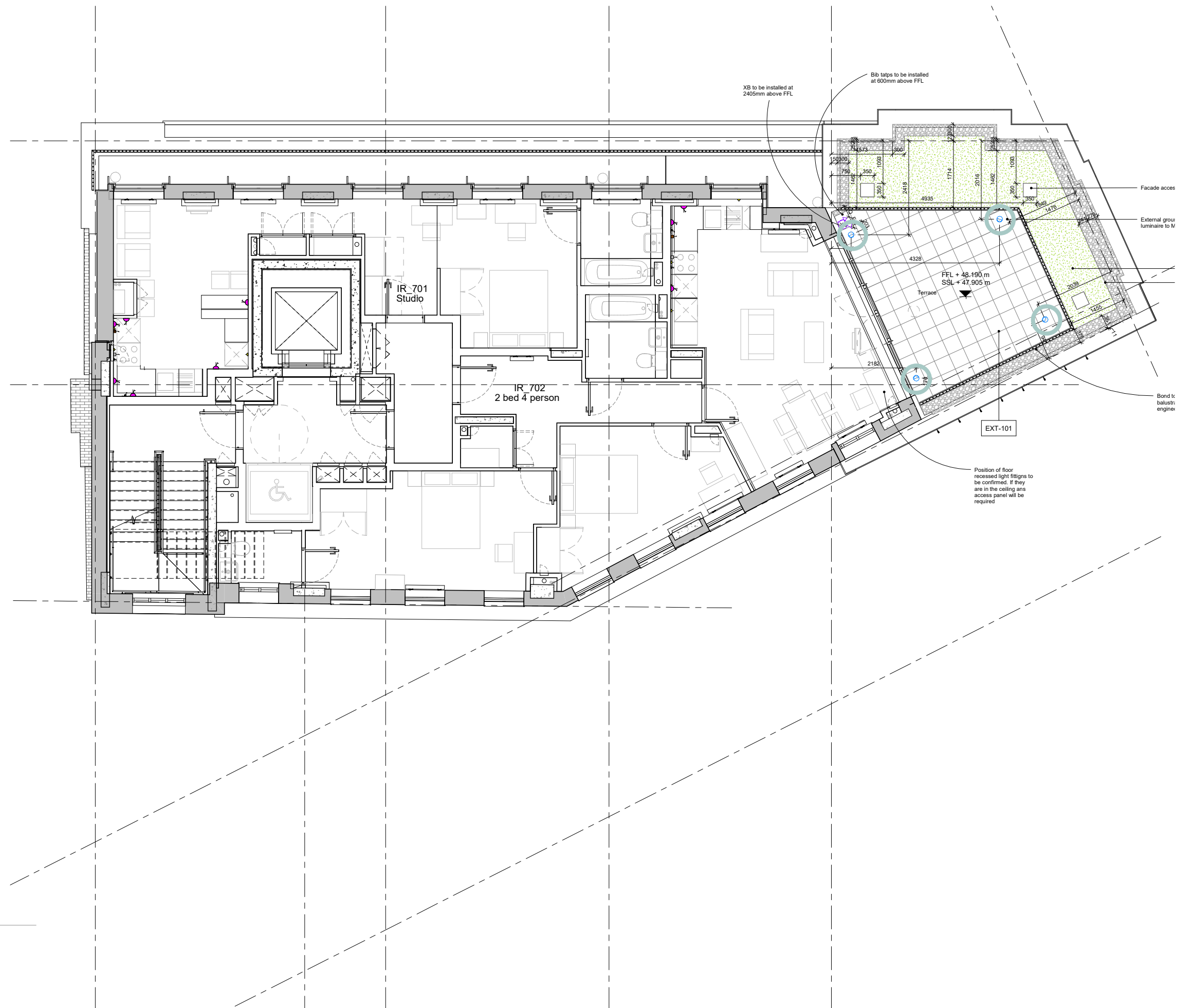
## Level 06 Plan



### Key

- CCTV
- Wall mounted light fitting
- Floor recessed light fitting

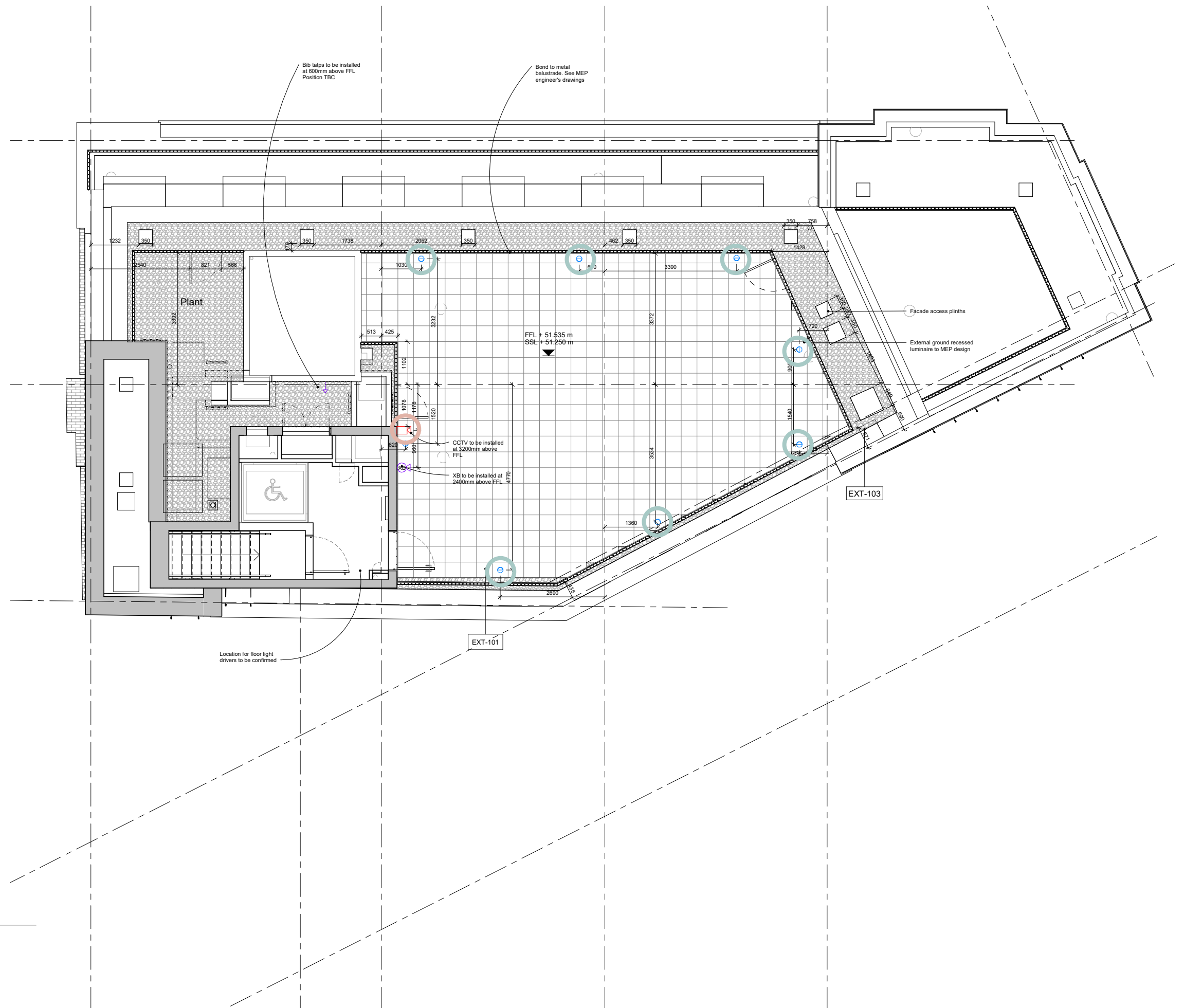
## Level 07 Plan



### Key

- CCTV
- Wall mounted light fitting
- Floor recessed light fitting

## Level 08 Plan



### Key

- CCTV
- Wall mounted light fitting
- Floor recessed light fitting

**—**  
Apt  
235 St John Street  
London EC1V 4NG

**—**  
T. +44 (0)20 7419 3500  
E. [mail@apt.london](mailto:mail@apt.london)  
W. [www.apt.london](http://www.apt.london)