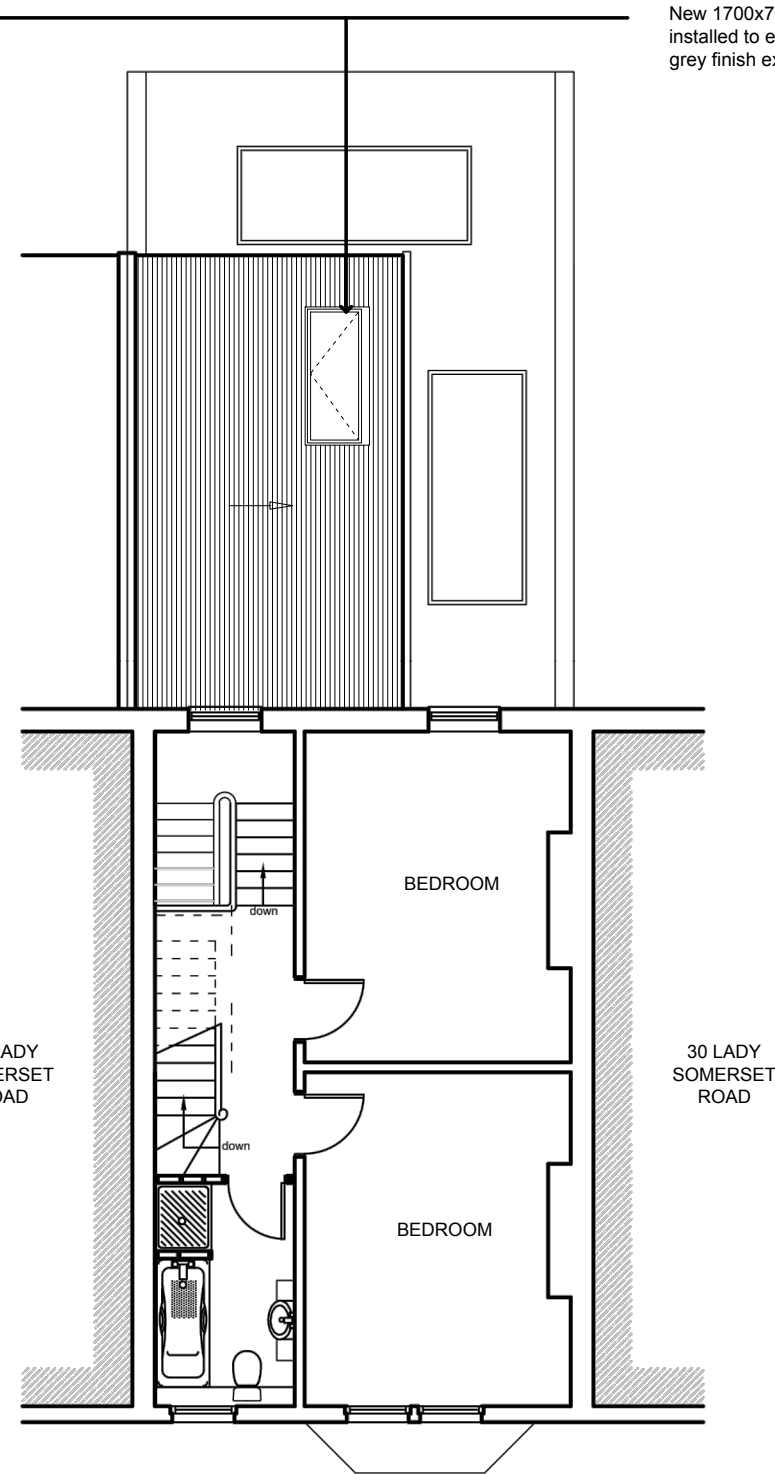


01 FIRST FLOOR PLAN
AS EXISTING



02 SECOND FLOOR PLAN
AS EXISTING

New 1700x700mm minimally framed roof light
installed to existing artificial slate roof in dark
grey finish externally

32 LADY SOMERSET ROAD - NW5 1TU

Dwg No. LSRPR01 - FIRST AND SECOND FLOOR PLAN AS PROPOSED
1:100@A3

DECEMBER 2020

FOR PLANNING

Malcolm Fryer Architects Limited

UNIT LG05, SCREENWORKS, 22 HIGHBURY GROVE, N52EF, LONDON

www.mfryer-architects.com