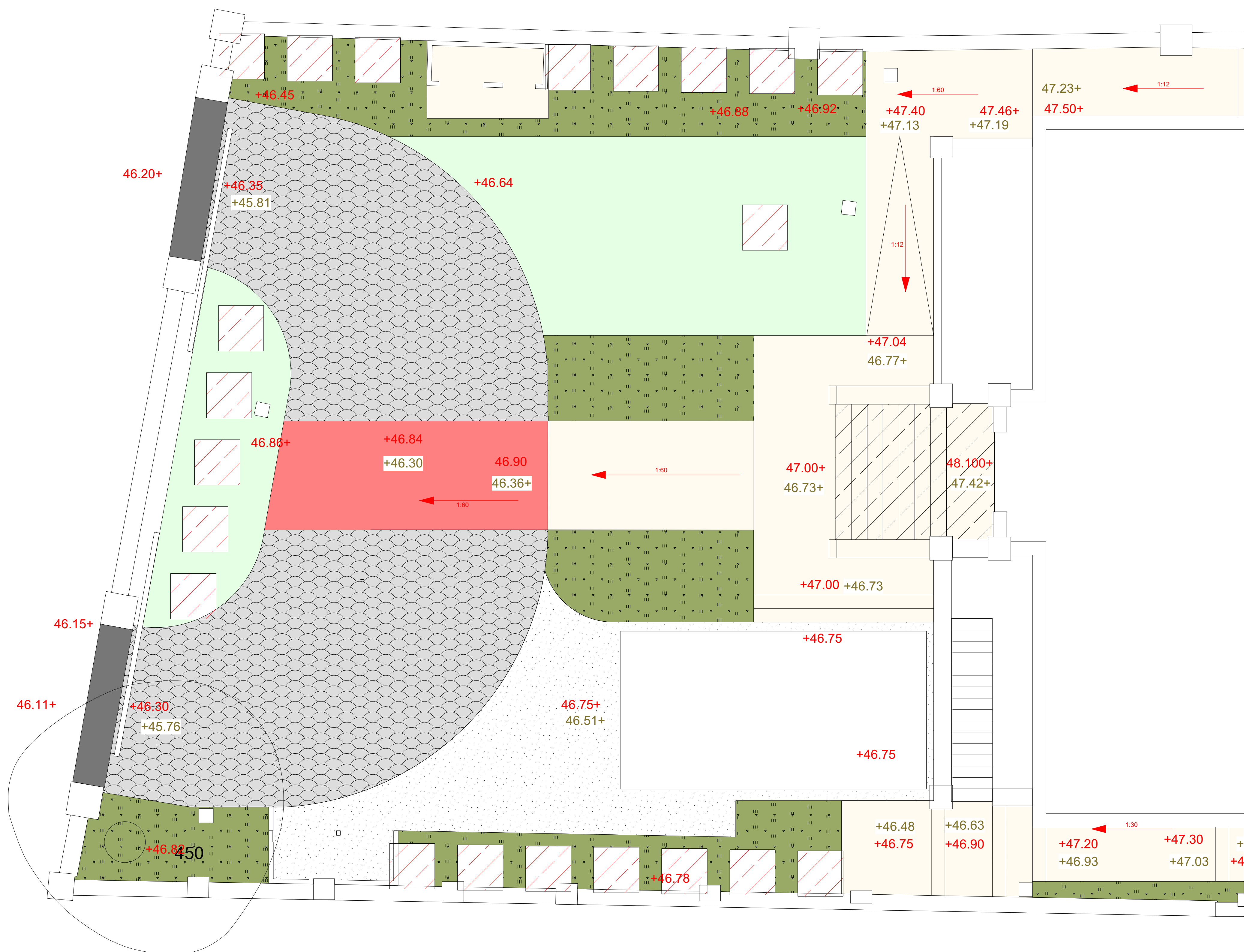


1

Scale: 1:50




notes


1. Read in conjunction with all relevant Architects, Engineers & design team drawings & specifications
2. Any discrepancies must be drawn to the attention of the lead consultant in writing
3. All dimensions are in millimeters unless otherwise noted & are subject to checking on site prior to fabrication or ordering of materials
4. This drawing is the copyright of CLIFTON NURSERIES LTD. (and other consultants where referenced)

NOTE:

To be read in conjunction with Landscape Masterplan 13-01 and Hardworks Plan drawings to shown heights.


Any works to be carried out within the RPA to be hand dug.

 All tree pits/areas should have any hard material/waste removed by Audley to a depth of approx. 800mm in a 1m square area per tree so that we are left with topsoil/subsoil to excavate for the tree pits.


 All lawn areas to be excavated by Audley to a depth of approx. 200mm below finished lawn levels and any hard construction material removed beneath this to at least 400mm deep and any pan ripped through and broken out.

All planting areas/borders to be excavated by Audley to a depth of 450mm deep and any hard construction material removed beneath this to at least 700mm deep and any pan ripped through and broken out so that we are left with topsoil/subsoil at a depth of 450mm below finished levels. If suitable existing topsoil is found below excavations this can be retained subject to inspection by Clifton Nurseries.

All Sofia limestone paving areas (other than 75mm deep paving panel in drive) to be built up/excavated by Audley to approx. 270mm below finished levels

 Portico step/paving area to be formed by Audley in concrete to finish approx. 60mm below finished level

75mm deep paved panel to centre of granite set drive to be built up/excavated by Audley to approx. 415mm below finished levels.

 Pietrapave granite sett pave area to be built up/excavated by Audley to approx. 540mm below finished levels

Granite sett areas between entrance piers to be built up/excavated by Audley to approx. 400mm below finished levels

Resin bound drive areas built up/excavated by Audley to approx. 236mm below finished levels. Carlift buildup TBC by Audley.

+46.73	Excavation / build up to formation level by Audleys in preparation for landscaping by Clifton Nurseries.
--------	--

Finished levels

RA	29 OCT 21	BL	PC	Amend drive sweep to B&W revL
Orig	1 OCT 21	BL	PC	n/a
rev	date	by	chk	notes

Clifton Nurseries Ltd., Woburn Hill, Addlestone, Surrey, KT15 2QG

project title

62 Avenue Road

drawing

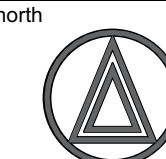
Front garden groundworks

job number

2643	2643-14-01
------	------------

status
TENDER

scale 1:50@A1



CLIFTON
NURSERIES