

5.2 Access From G08

Stepped Access

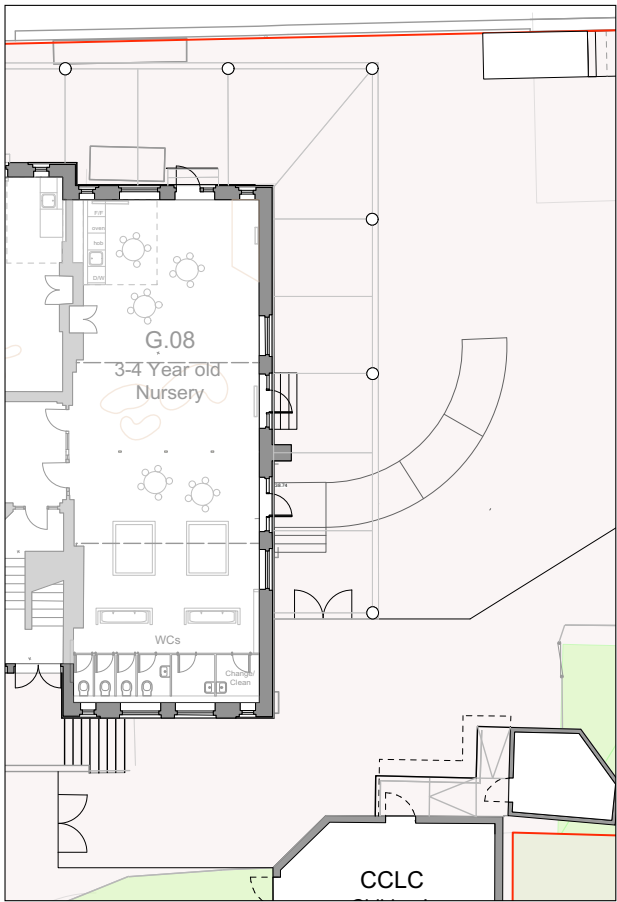
During the final stages of design development, the school client concluded that the provision of a new access ramp would not be desirable due to the large area of space it would take up within the now subdivided playground.

A series of ramp designs had been looked at in detail however the client group concluded that none of these were successful and would all inhibit the operation of daily activities.

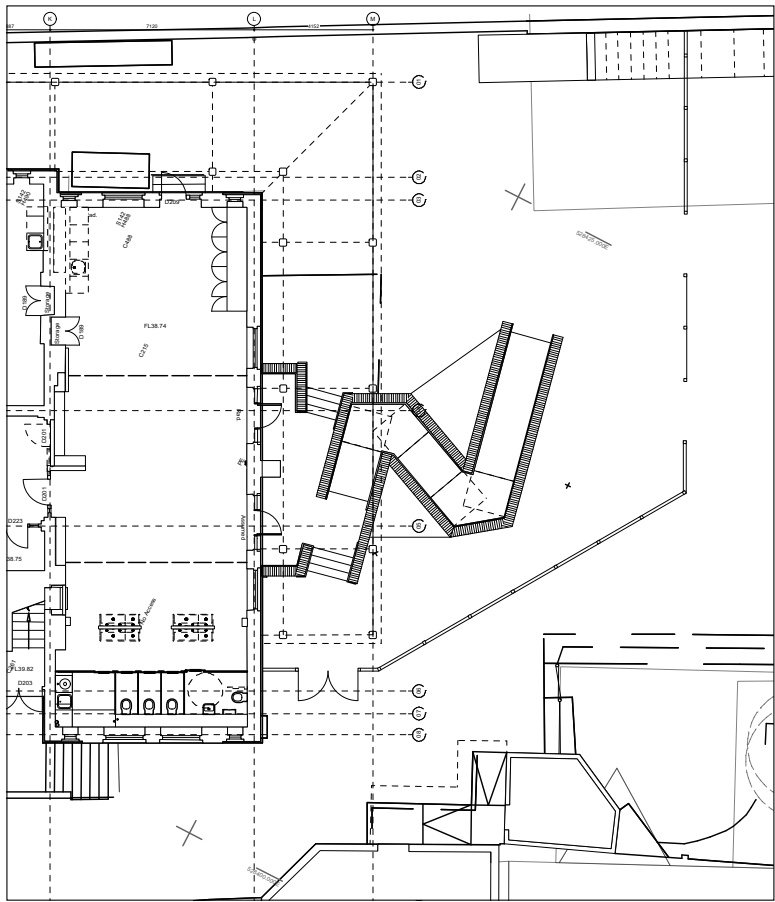
Given the number of steps elsewhere in the building, the school is currently unable to accept pupils who are dependant on wheelchairs and the conclusion was to preserve usable playground space.

The alternative approach has been to provide a new set of steps with a generous landing designed for use by ambulant disabled users, featuring the following provisions of Part M and BS 8300:

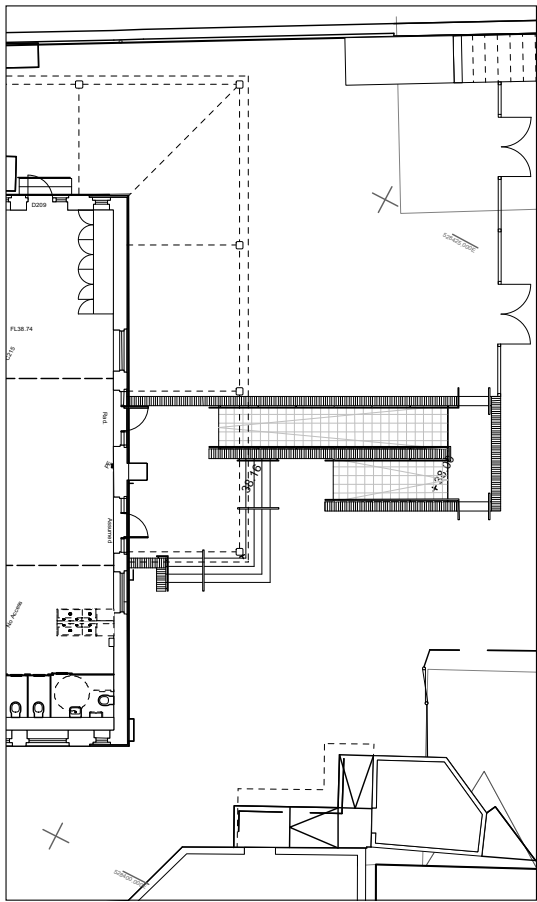
- Unobstructed landings of not less than 1200mm
- Corduroy hazard warning surfaces at the top and bottom of each flight.
- Visually contrasting step nosings.
- Dual handrails on either side of the site to cater to younger users.
- Slip resistance of 36 PTV for level zones and 38.5 PTV and above for areas with a 2.5% gradient.
- Lighting to a minimum luminance of 100 lux from multiple sources to avoid strong shadows and excessive glare.



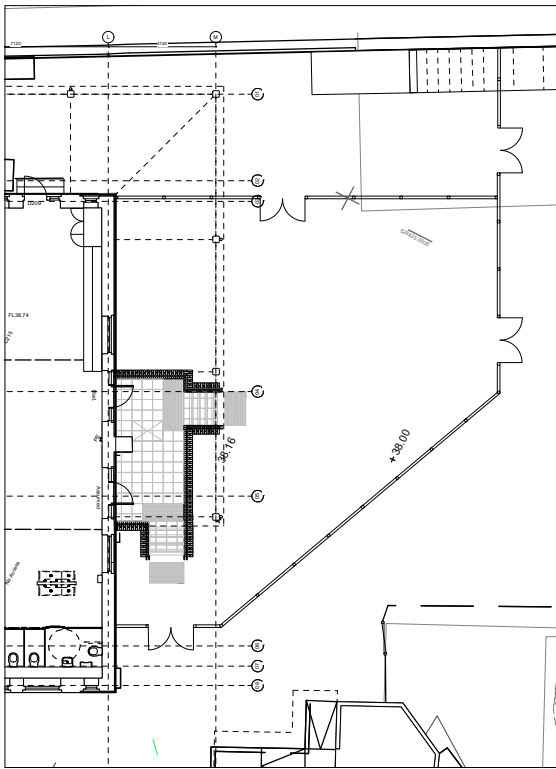
Original curved ramp submitted at planning



Zig-zag design trying to reduce the extent of the ramp



Straight run ramp, also rejected



Above and Right. Amended design for stepped access from G08

