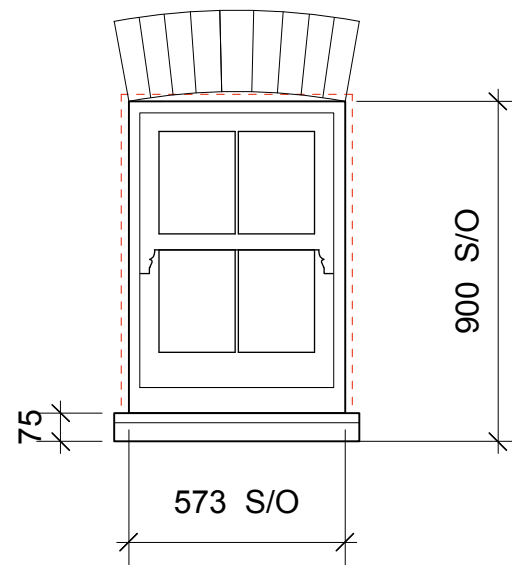


Conservation Spring Sash Window

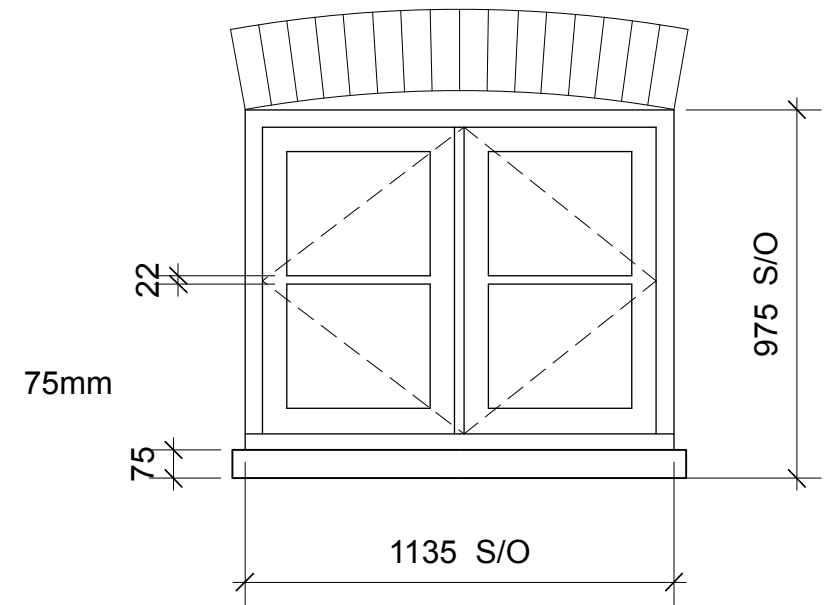
1 WG.01.01 External Elevation
400

Proportions of 8mm glazing bars to sash windows match existing windows



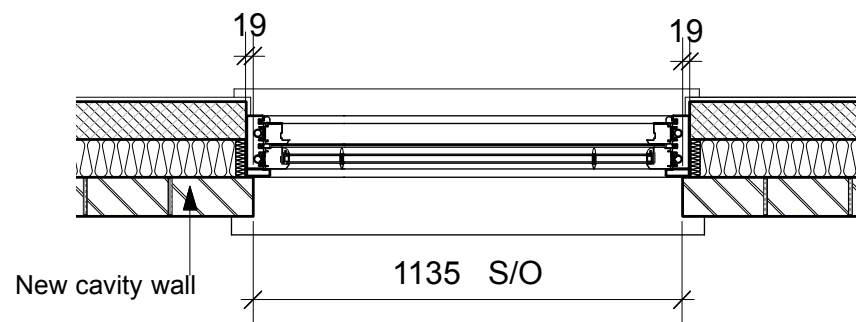
Conservation Spring Sash Window (obscure glass to be confirmed)

2 W.G.01.02 External Elevation
400

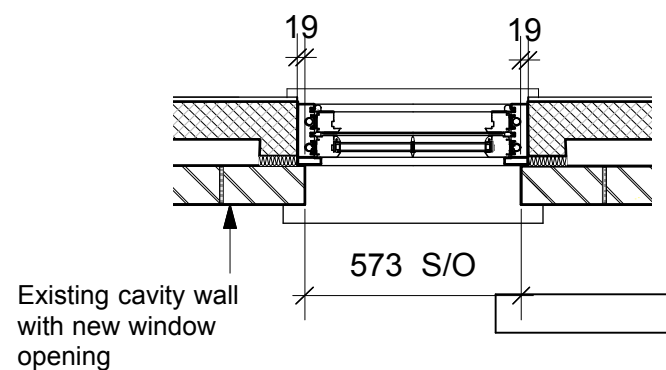


Conservation Casement side hung flying mullion window

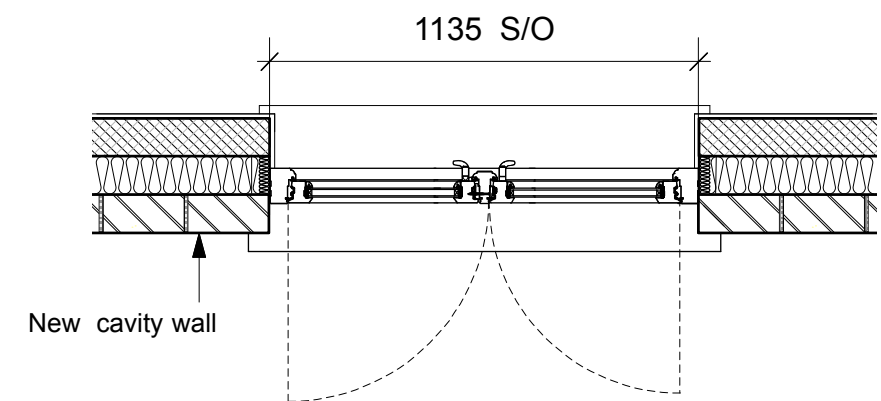
3 W.LG.01.02 External Elevation
400



4 W.G.01.01 Plan
400



5 W.G.01.02 Plan
400



6 W.LG.01.02 Plan
400

NOTE

- All timber windows to be Mumford & Wood Conservation Range or equal approved.
- Timber Spring Sash Double Glazed Windows with 8mm fine lambs tongue bars to match existing windows
- Side hung casement with flying mullion and 22mm lambs tongue bars
- Trickle vents to all windows to meet Building Regulations requirements
- New windows to have segmental brick arches (Ibstock Melton or similar approved) with fair faced soffits to match existing.
- All windows to have DPMs fitted all around the frames.
- All dimensions to be checked on site prior to manufacture.
- Shop drawings required for approval prior to fabrication.

These particulars do not constitute, nor constitute any part of, an offer or a contract. All statements contained in these particulars as to this property are made without the responsibility on the part of Norton Ellis Architects Ltd. or the Vendors or Lessors. None of the statements contained in these particulars as to this property are to be relied on as statements or representations of fact. All measurements are approximate and no responsibility is taken for any error, omission, or mis-statement and any intending purchaser or tenants must satisfy themselves by inspection or otherwise as to the correctness of each of the statements contained in these particulars/ plans.
All dimensions to be checked on site and any discrepancy to be reported to the Architect prior to construction. This drawing to be read in conjunction with all other drawings including those of other consultants.
Samples of all materials to be provided for comment/ approval prior to fabrication/construction © 2021 Norton Ellis Architects Ltd

Drawn by:
CN
Checked by:
RE

Revision:

315-400

Rev:
Date: 08.11.21
Scale: 1:20 @ A3

PURPOSE OF ISSUE
Preliminary
Planning
Tender
Construction

Proposed - Windows to Extension

5 Rochester Road
London, NW1 9JH

norton ellis architects
Greenside House
50 Station Road
London N22 7DE
Tel: 07375 636560
www.nortonellis.co.uk
mail@nortonellis.co.uk

