

Clear laminated structural glass balustrade to stairs with brushed stainless steel handrail

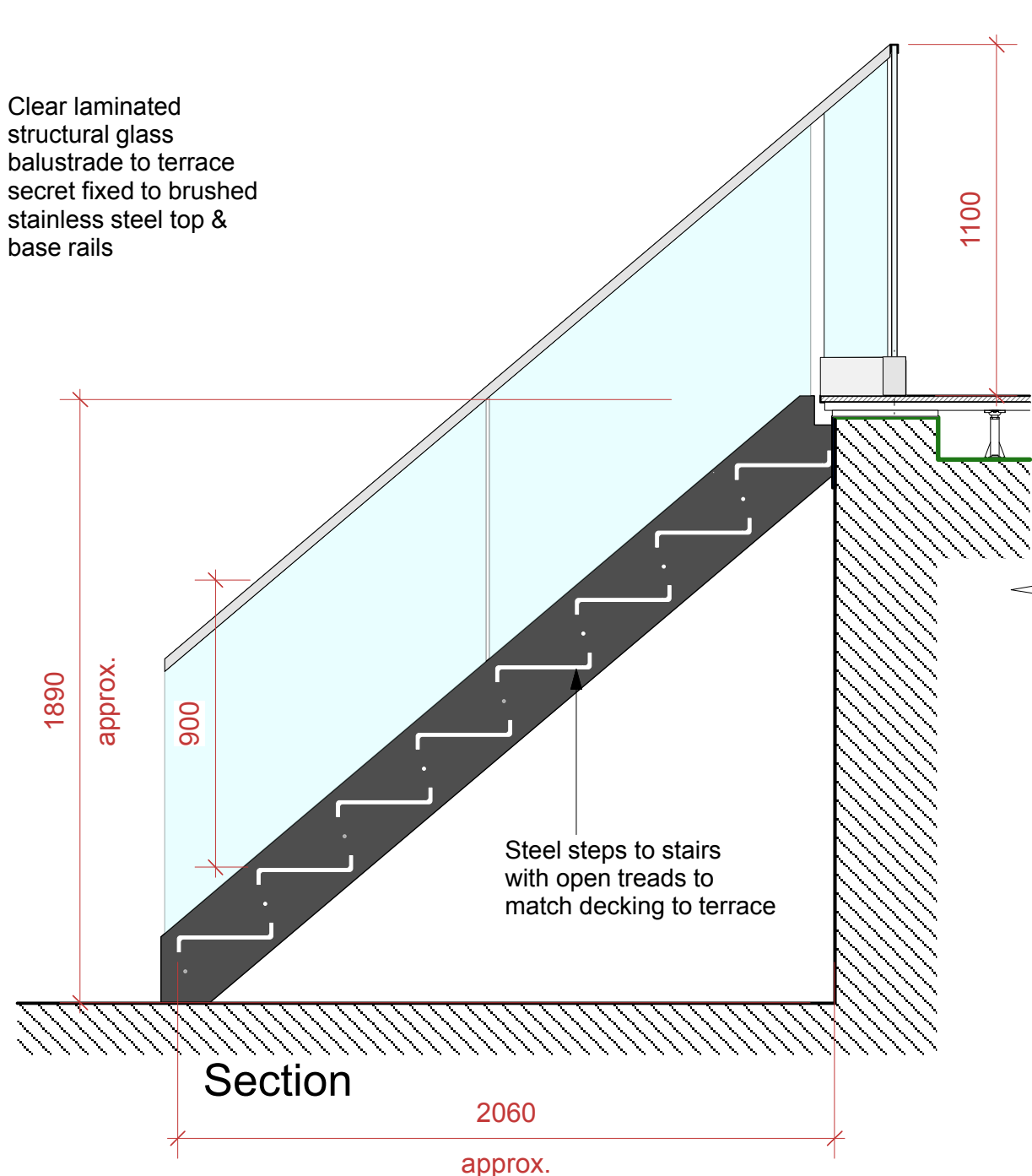
Steel string to stairs with a black painted finish

Clear laminated structural glass balustrade to terrace secret fixed to brushed stainless steel top & base rails

Terrace

Sunken Patio

Side Elevation



1890 approx.

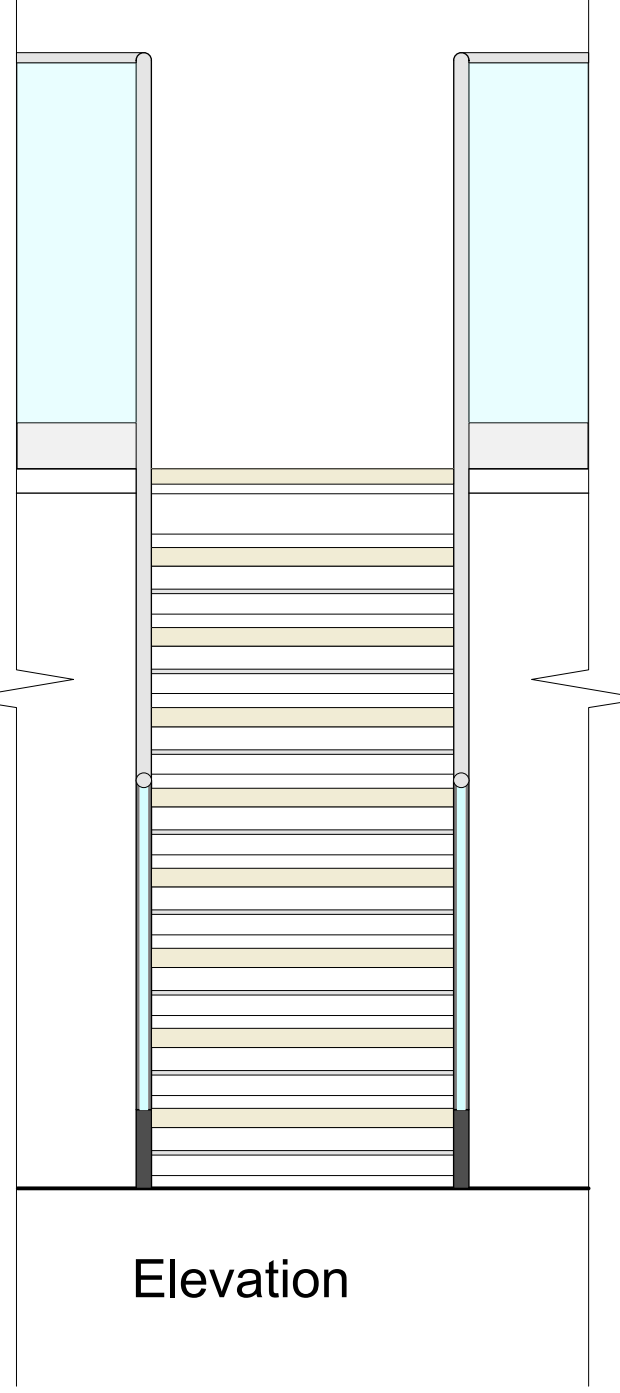
900

2060 approx.

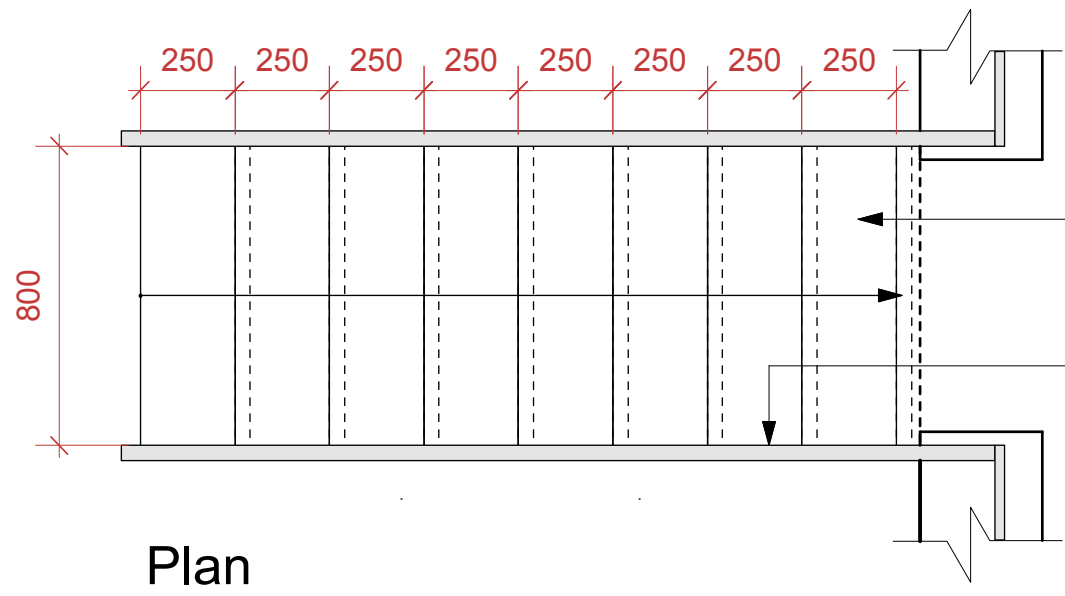
1100

Steel steps to stairs with open treads to match decking to terrace

Section



Elevation



Steel steps to stairs with open treads to match decking to terrace

Brushed steel 40mm diameter handrail to stairs

Plan

NOTE
Stairs to comply with Building Regulations

These particulars do not constitute, nor constitute any part of, an offer or a contract. All statements contained in these particulars as to this property are made without the responsibility on the part of Norton Ellis Architects Ltd. or the Vendors or Lessors. None of the statements contained in these particulars as to this property are to be relied on as statements or representations of fact. All measurements are approximate and no responsibility is taken for any error, omission, or mis-statement and any intending purchaser or tenants must satisfy themselves by inspection or otherwise as to the correctness of each of the statements contained in these particulars/ plans.
All dimensions to be checked on site and any discrepancy to be reported to the Architect prior to construction.
This drawing to be read in conjunction with all other drawings including those of other consultants.
Samples of all materials to be provided for comment/ approval prior to fabrication/construction © 2021 Norton Ellis Architects Ltd.

Drawn by:
RE
Checked by:
CN

315 - 274
Rev:
Date: 01.12.2021
Scale: 1:20 @ A3

PURPOSE OF ISSUE
Preliminary
Planning
Tender
Construction

Garden Staircase
5 Rochester Road,
London NW1 9JH

norton ellis architects
Greenside House
50 Station Road
London N22 7DE
Tel: 07375 636560
www.nortonellis.co.uk

