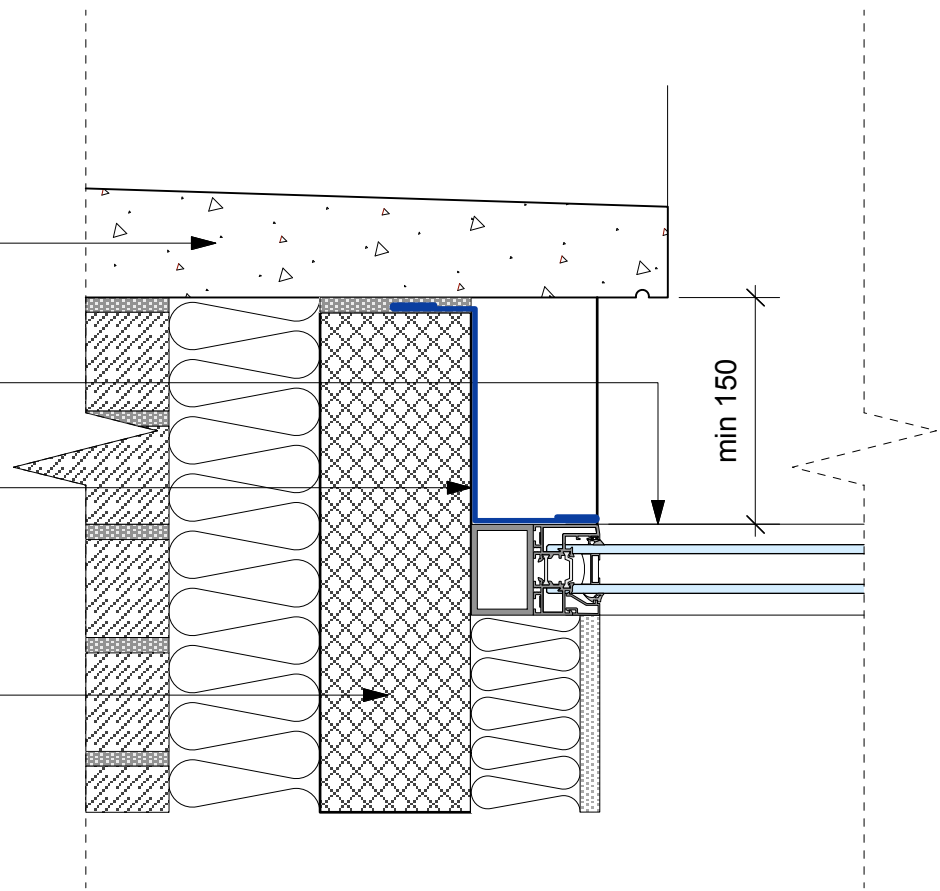


New coping stone to fall on DPM

New glazed roof system by specialist

Min code 4 stepped lead flashing in accordance with lead development association recommendations

100mm Aircrete Hi strength blockwork in inner leaf



These particulars do not constitute, nor constitute any part of, an offer or a contract. All statements contained in these particulars as to this property are made without the responsibility on the part of Norton Ellis Architects Ltd. or the Vendors or Lessors. None of the statements contained in these particulars as to this property are to be relied on as statements or representations of fact. All measurements are approximate and no responsibility is taken for any error, omission, or mis-statement and any intending purchaser or tenants must satisfy themselves by inspection or otherwise as to the correctness of each of the statements contained in these particulars/ plans.
All dimensions to be checked on site and any discrepancy to be reported to the Architect prior to construction.
This drawing to be read in conjunction with all other drawings including those of other consultants.
Samples of all materials to be provided for comment/ approval prior to fabrication/construction © 2021 Norton Ellis Architects Ltd.

Drawn by:
CMcC

Checked by:

315 - 271

Rev:
Date: 22.11.2021
Scale: 1:5 @ A3

PURPOSE OF ISSUE

Preliminary ☐
Planning ☐
Tender ☒
Construction ☐

**Detail V - Glazed Roof Verge
Detail**

5 Rochester Road,
London NW1 9JH

norton ellis architects
Greenside House
50 Station Road
London N22 7DE
Tel: 07375 636560
www.nortonellis.co.uk

nea