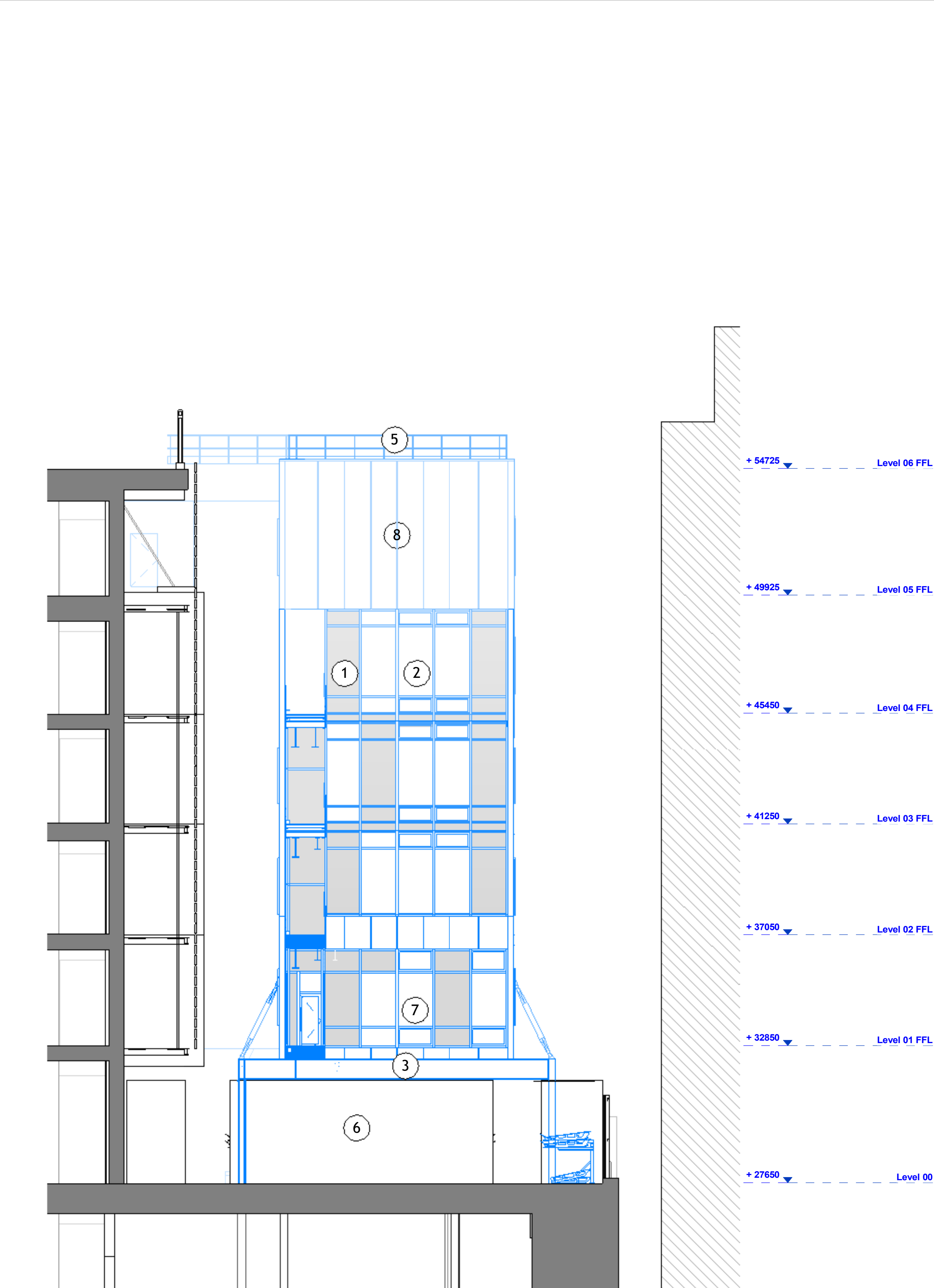


1 Proposed 5th Quad East Elevation  
1 : 100



2 Proposed 5th Quad West Elevation  
1 : 100

DO NOT SCALE  
THIS DRAWING IS © IAN RITCHIE ARCHITECTS LTD  
Dimensions to be verified on site.  
Figured dimensions to take preference to those scaled.  
All discrepancies to be clarified with the project Architect.  
Unless otherwise stated all levels to be AOD.  
This drawing is the property of Ian Ritchie Architects Ltd. and is  
issued on the condition it is not reproduced, retained or  
disclosed  
to any unauthorised person, either wholly or in part without  
written consent.

- REVISION
- IN ABEYANCE

- 1 Inclined double glazing curtain wall with white PPC aluminium frames
- 2 White opaque insulated panels
- 3 White intumescent painted exposed transfer Structure
- 4 Open grille maintenance bridge from SWC level 6
- 5 White PPC balustrade
- 6 Exsiting workshop
- 7 Double glazed curtain walling with white PPC aluminium frames
- 8 White PPC steel finished - rockwool sandwich panel cladding

PL	15.09.21	TR	GT	IR	Planning
Rev	Date	By	Ck	Ap	Description
Job Title					
SWC - 5th Quad					
Drawing Title					
Proposed E-W GA Elevations					
© IAN RITCHIE ARCHITECTS LTD. 110 Three Colt Street London E14 8AZ Tel: +44 (0)207 338 1100					
Status					
FOR COMMENT					
Scale				Date	
1 : 100@A1				15.09.2021	
Drawn		Checked		Approved	
TR		GT		IR	
Job No.		Drawing No.			Rev.
780		780-IRAL-DR-08-2103			PL