

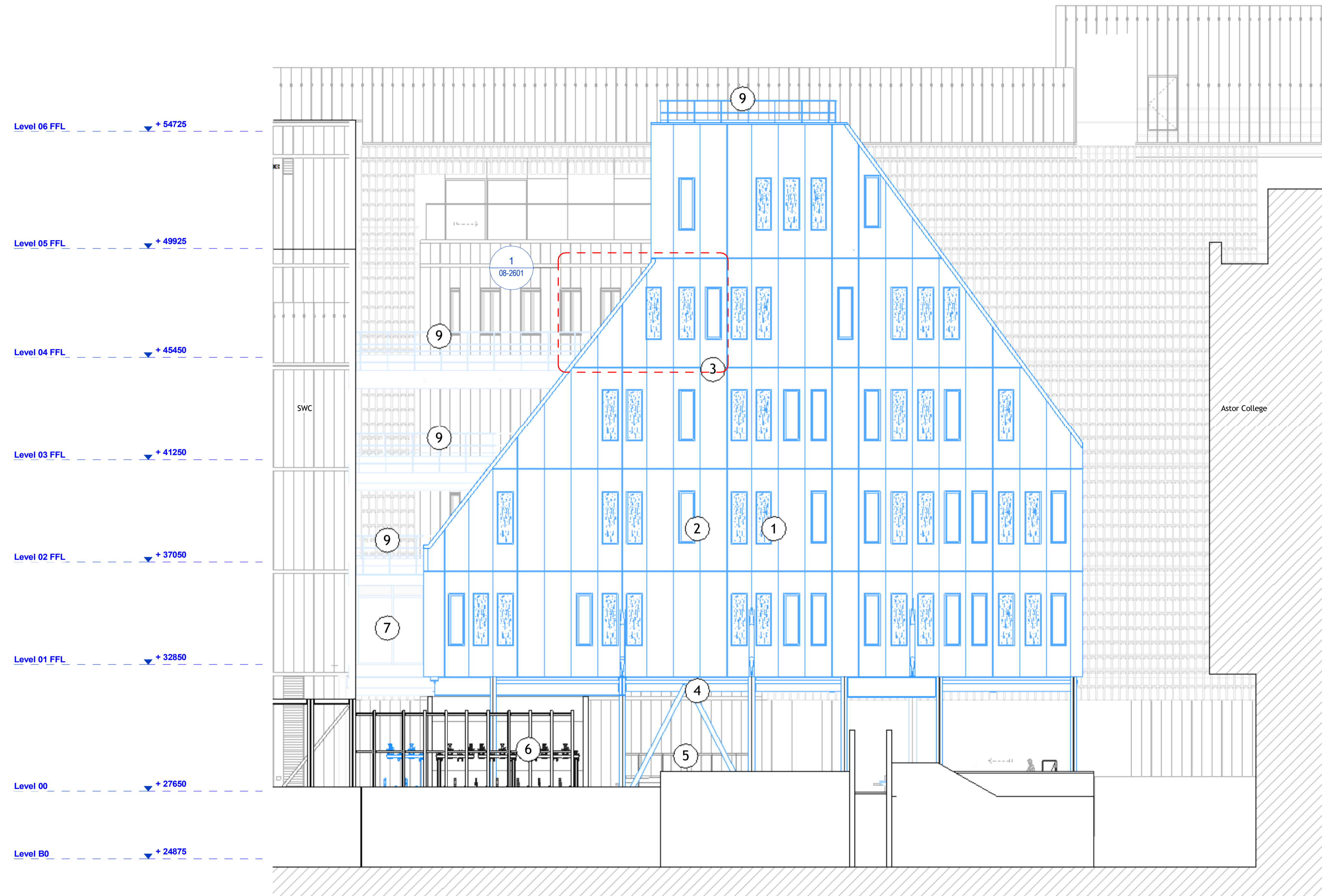


DO NOT SCALE
 THIS DRAWING IS © IAN RITCHE ARCHITECTS LTD
 Dimensions to be verified on site.
 Figured dimensions to take preference to those scaled.
 All discrepancies to be clarified with the project Architect.
 Unless otherwise stated all levels to be AOD.
 This drawing is the property of Ian Ritchie Architects Ltd. and is issued on the condition it is not reproduced, retained or disclosed to any unauthorized person, either wholly or in part without written consent.

-  REVISION
-  IN ABEYANCE

- 1 White PPC. laser cut, perforated, aluminium art piece/ ventilation grille
- 2 Double glazed windows with white PPC aluminium frames
- 3 White PPC steel finished - rockwool sandwich panel cladding 1000/1100mm horizontal module
- 4 Exposed white intumescent coated galvanised steel transfer Structure
- 5 Existing Lumium
- 6 Existing bicycle stands & Workshop
- 7 Double glazed curtain walling with PPC aluminium frames
- 8 Exposed white intumescent coated galvanised steel bridge structure
- 9 White PPC balustrade



1 Proposed South GA Elevation
 1 : 100

PL	15.09.21	TR	GT	IR	Planning
Rev	Date	By	Ck	Ap	Description

Job Title
 SWC - 5th Quad

Drawing Title
 Proposed South GA Elevation

© IAN RITCHE ARCHITECTS LTD.
 110 Three Colt Street London E14 8AZ
 Tel: +44 (0)207 338 1100

Status
 FOR COMMENT

Scale
 1 : 100@A1

Date
 15.09.2021

Drawn TR	Checked GT	Approved IR
-------------	---------------	----------------

Job No. 780	Drawing No. 780-IRAL-DR-08-2101	Rev. PL
----------------	------------------------------------	------------