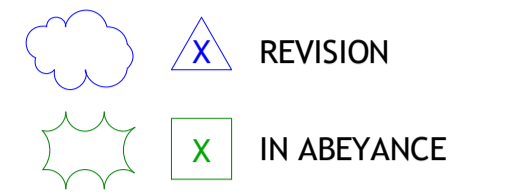
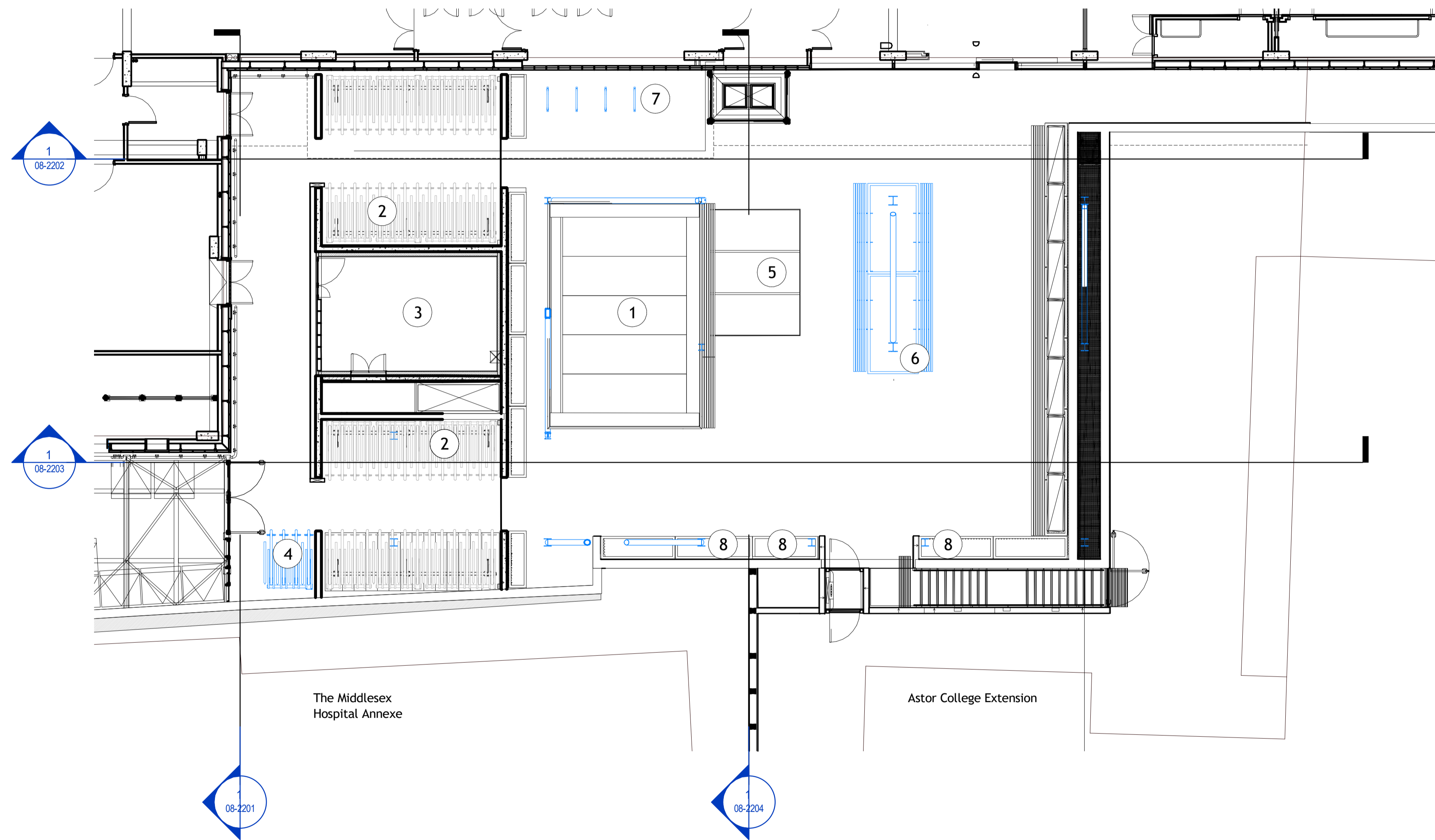


DO NOT SCALE
 THIS DRAWING IS © IAN RITCHE ARCHITECTS LTD
 Dimensions to be verified on site.
 Figured dimensions to take preference to those scaled.
 All discrepancies to be clarified with the project Architect.
 Unless otherwise stated all levels to be AOD.
 This drawing is the property of Ian Ritchie Architects Ltd. and is issued on the condition it is not reproduced, retained or disclosed to any unauthorised person, either wholly or in part without written consent.



- 1 Lumium to basement
- 2 Existing cycle parking
- 3 Workshop
- 4 Double stacked bicycle stands
- 5 Hatch to basement
- 6 New GRC planter and seating
- 7 Sheffield stands for additional cycle parking
- 8 GRC planters to be modified



1 Proposed 5th Quad Ground Floor GA Plan
 1 : 100

PL	15.09.21	TR	GT	IR	Planning
Rev	Date	By	Ck	Ap	Description
Job Title SWC - 5th Quad					
Drawing Title Proposed 5th Quad Ground Floor Plan GA +27.650					
© IAN RITCHE ARCHITECTS Ltd. 110 Three Colt Street London E14 8AZ Tel: +44 (0)207 338 1100					
Status FOR COMMENT					
Scale 1 : 100@A1				Date 15.09.2021	
Drawn TR		Checked GT		Approved IR	
Job No. 780		Drawing No. 780-IRAL-DR-08-2000		Rev. PL	