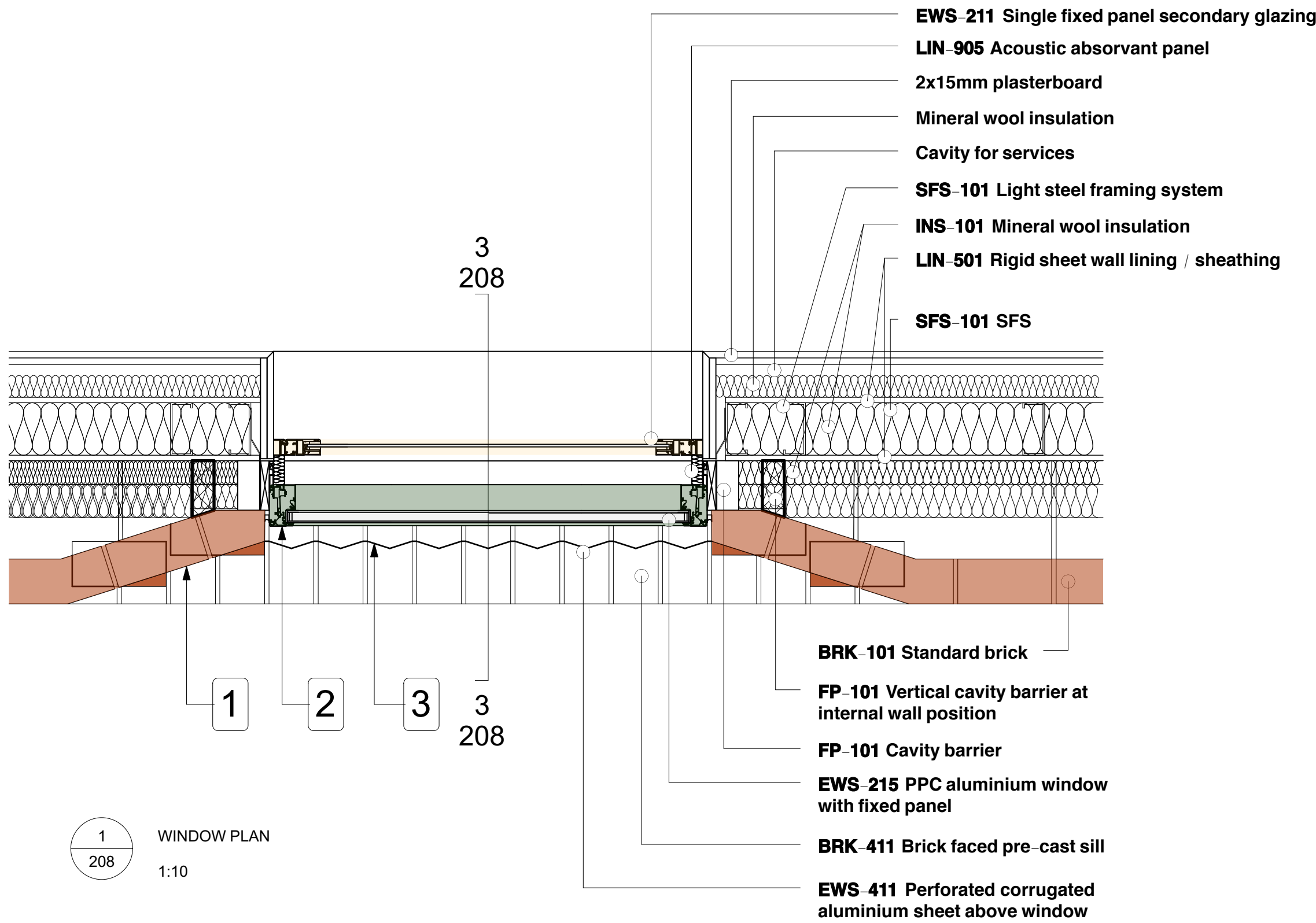
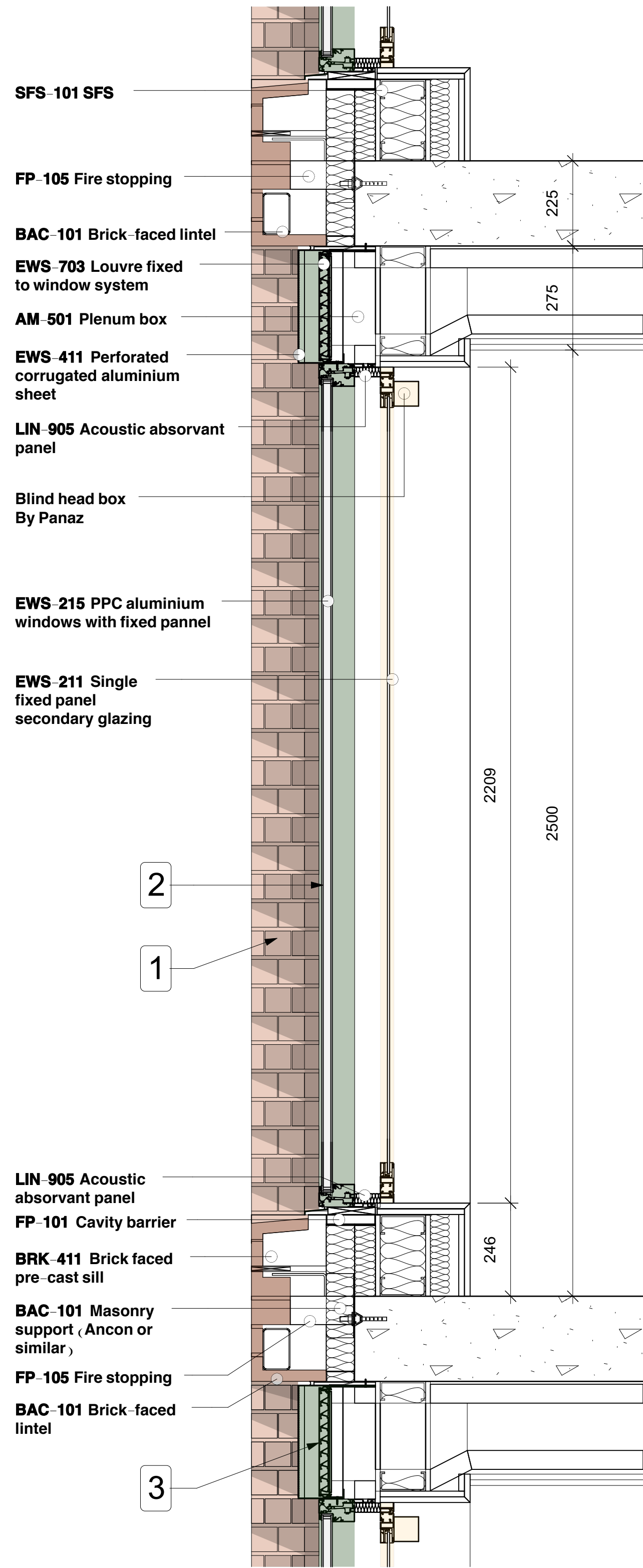


2
208
WINDOW ELEVATION
1:10

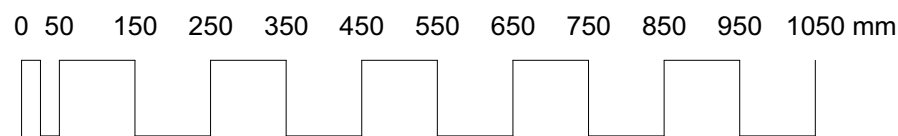


1
208
WINDOW PLAN
1:10



3
208
WINDOW SECTION
1:10

- 1 Brickwork by Wienerberger - Wamham Red Stock laid in stretcher bond with flush mortar joints.
- 2 Aluminium powder coated with a green hue for window frames, doors and balustrades.
- 3 'Zig-zag' aluminium powder coated with a green hue. Elements perforated above windows for ventilation purposes and solid when used for decorative purposes on the ground floor and residential unit.
- 4 Pigmented reconstituted stone with a consistent aggregate type and size range. The Colour matched with the brick.
- 5 Pigmented reconstituted stone, hue to match ground floor pre-cast and fluted texture to reflect 'zig-zag' panels.



Rev	Date	Description	By	Chk
-----	------	-------------	----	-----

AXIOM ARCHITECTS
1 Brooklands Yard Southover High Street Lewes East Sussex BN7 1HU
Tel. 01273 479434 www.axiomarchitects.co.uk

Client
Demar BVI Ltd.

Project
hub by Premier Inn
115-119 Camden High Street London

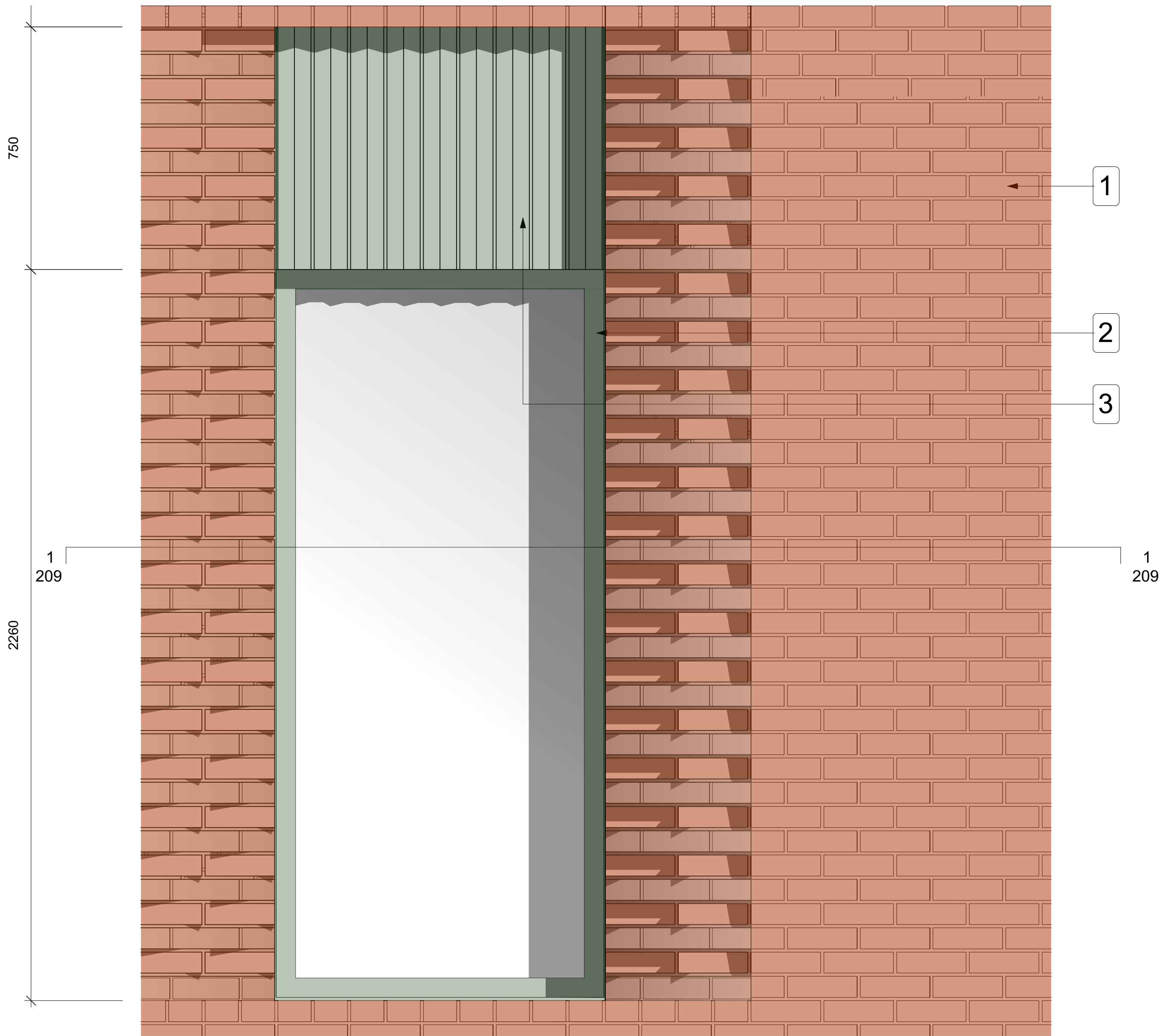
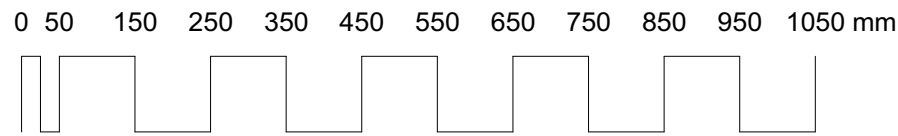
Drawing
Typical Window Bay - Type A

Scale	Status	Date	Drawn	Checked
1:10	CONDITION 3	24/06/21	AM	
Drawing No.		Revision		

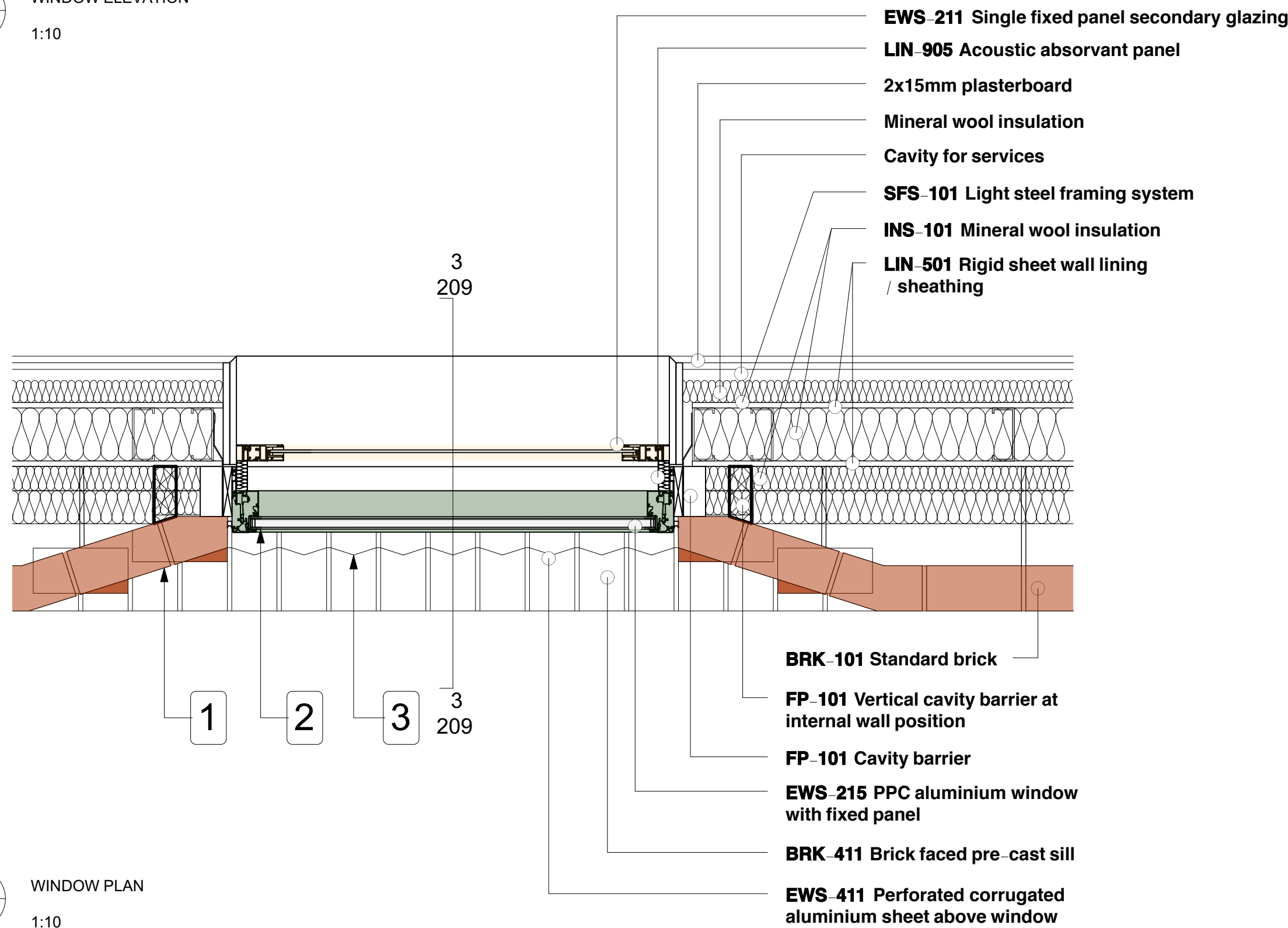
4603-PL-208

This drawing is the copyright of Axiom Architects. The contractor is to check all site dimensions and levels before work starts. This drawing must be read with and checked against all structural and other specialist drawings, specification and bills of quantities. Notify architect of any discrepancies. The contractor is to comply with all current British Standards and Building Regulations whether or not specifically stated on these drawings. **Do not scale** from drawings.

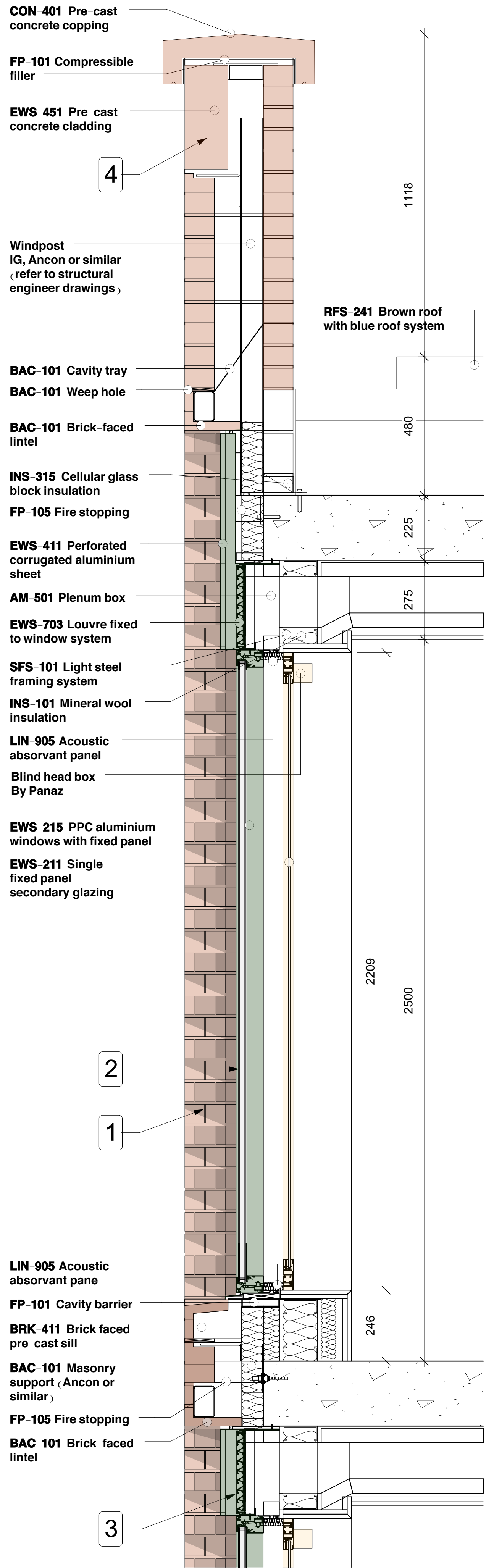
- 1 Brickwork by Wienerberger - Warnham Red Stock laid in stretcher bond with flush mortar joints.
- 2 Aluminium powder coated with a green hue for window frames, doors and balustrades.
- 3 'Zig-zag' aluminium powder coated with a green hue. Elements perforated above windows for ventilation purposes and solid when used for decorative purposes on the ground floor and residential unit.
- 4 Pigmented reconstituted stone with a consistent aggregate type and size range. The Colour matched with the brick.
- 5 Pigmented reconstituted stone, hue to match ground floor pre-cast and fluted texture to reflect 'zig-zag' panels.



2
209
WINDOW ELEVATION
1:10



1
209
WINDOW PLAN
1:10



3
209
WINDOW SECTION
1:10

Rev	Date	Description	By	Chk
-----	------	-------------	----	-----

AXIOM ARCHITECTS
1 Brooklands Yard Southover High Street Lewes East Sussex BN7 1HU
Tel. 01273 479434 www.axiomarchitects.co.uk

Client
Demar BVI Ltd.

Project
hub by Premier Inn
115-119 Camden High Street London

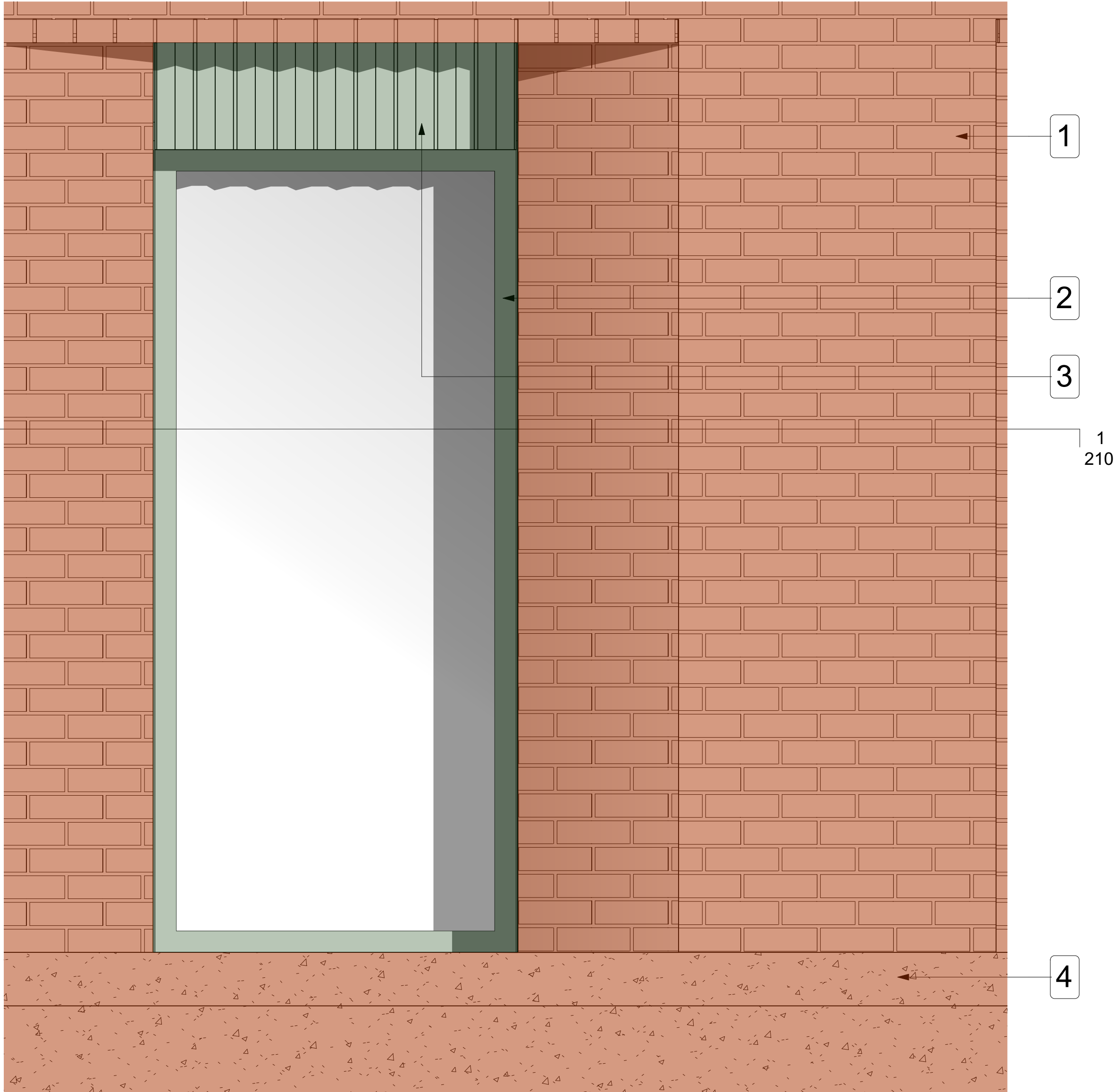
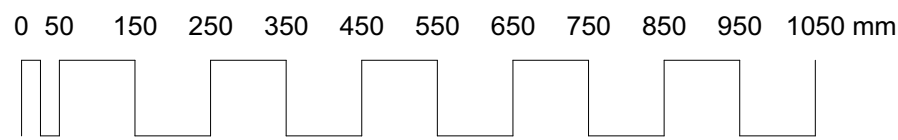
Drawing
Typical Window Bay - Type A Top Floor

Scale	Status	Date	Drawn	Checked
1:10	CONDITION 3	24/06/21	AM	

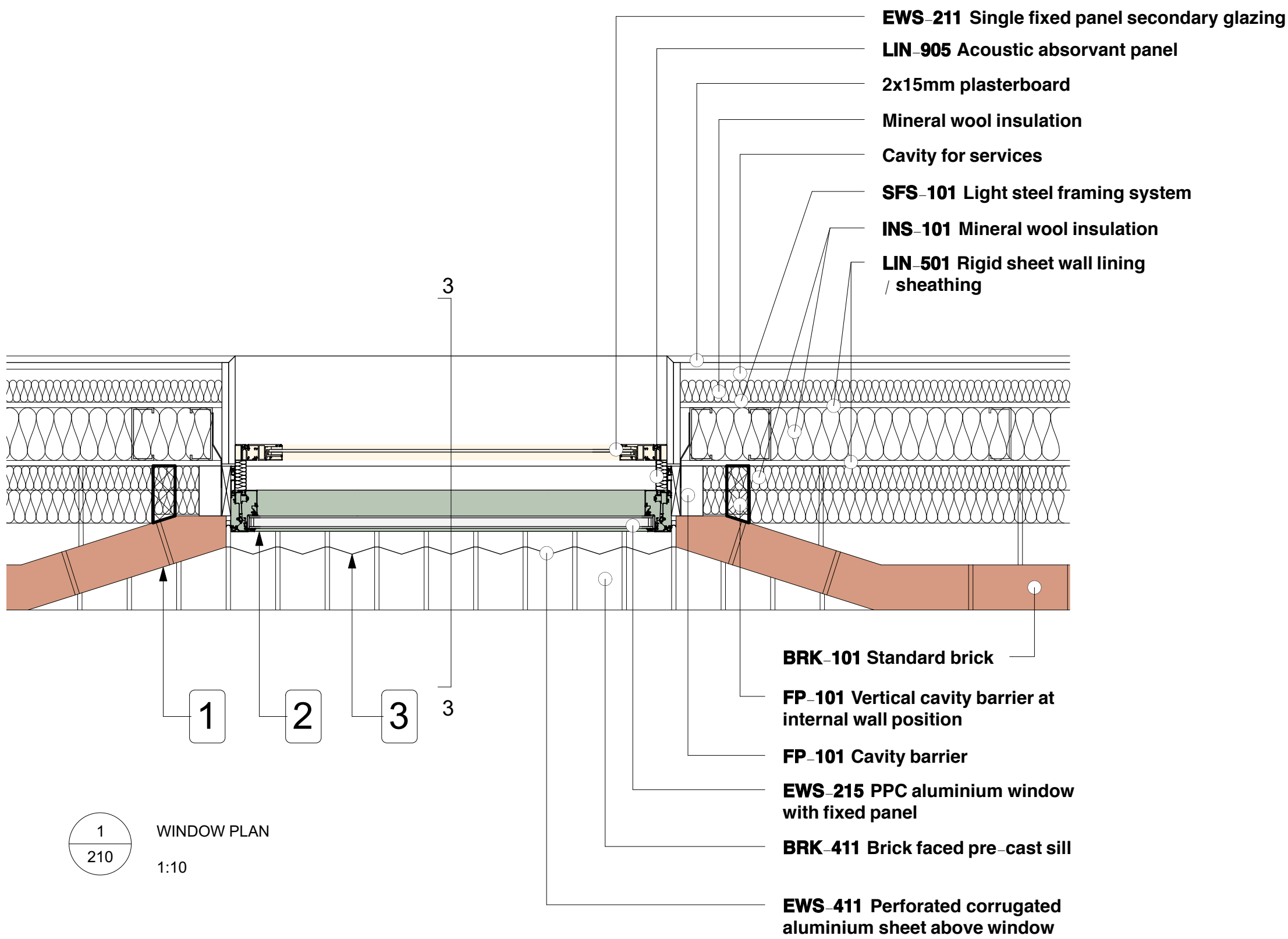
Drawing No.	Revision

4603-PL-209

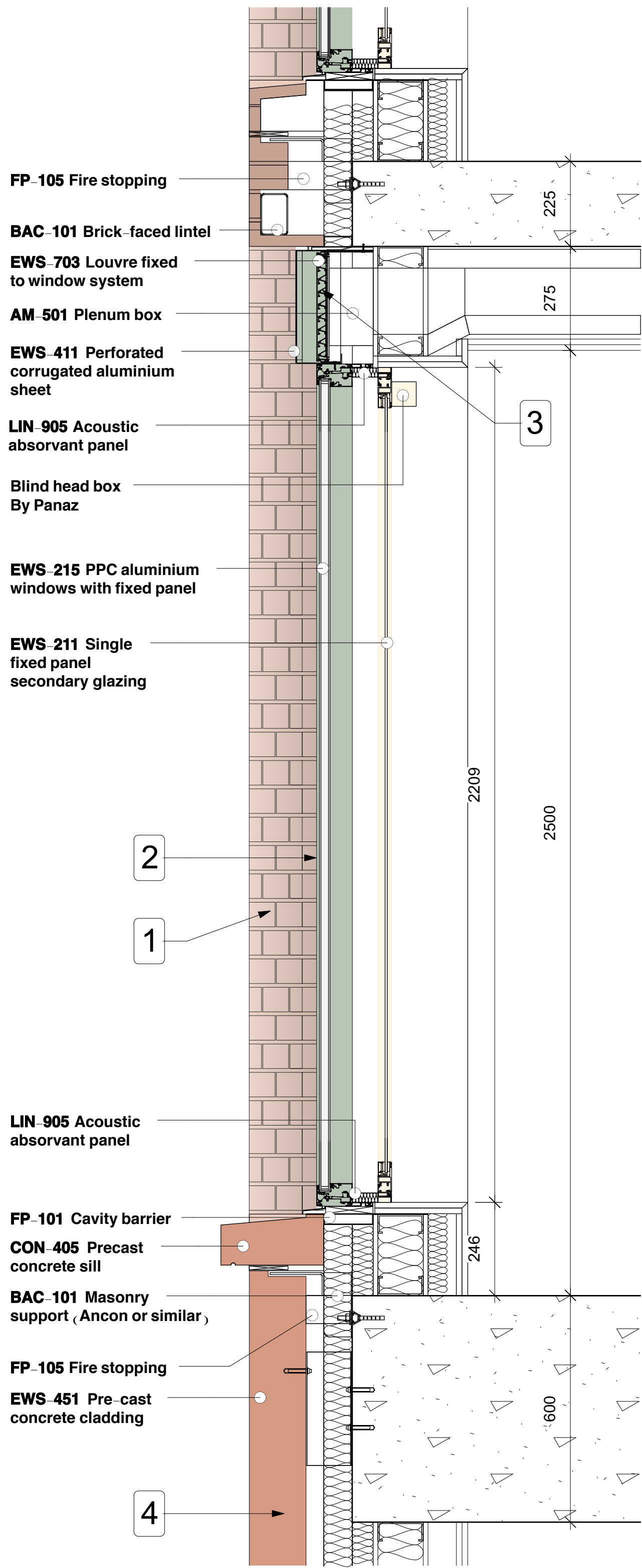
- 1 Brickwork by Wienerberger - Warnham Red Stock laid in stretcher bond with flush mortar joints.
- 2 Aluminium powder coated with a green hue for window frames, doors and balustrades.
- 3 'Zig-zag' aluminium powder coated with a green hue. Elements perforated above windows for ventilation purposes and solid when used for decorative purposes on the ground floor and residential unit.
- 4 Pigmented reconstituted stone with a consistent aggregate type and size range. The Colour matched with the brick.
- 5 Pigmented reconstituted stone, hue to match ground floor pre-cast and fluted texture to reflect 'zig-zag' panels.



2
210
WINDOW ELEVATION
1:10



1
210
WINDOW PLAN
1:10



3
210
WINDOW SECTION
1:10

Rev	Date	Description	By	Chk
-----	------	-------------	----	-----

AXIOM ARCHITECTS

1 Brooklands Yard Southover High Street Lewes East Sussex BN7 1HU
Tel. 01273 479434 www.axiomarchitects.co.uk

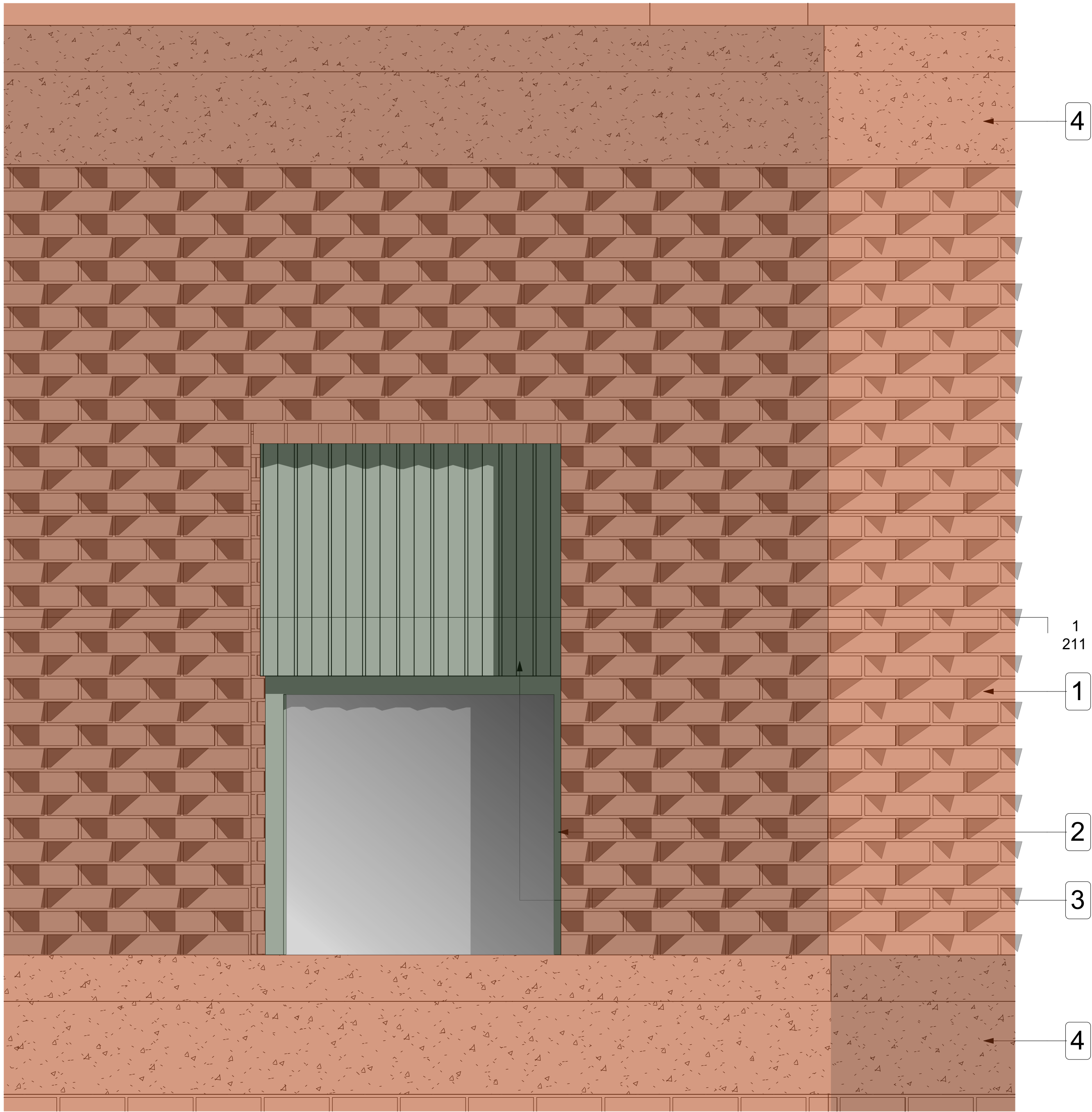
Client
Demar BVI Ltd.

Project
hub by Premier Inn
115-119 Camden High Street London

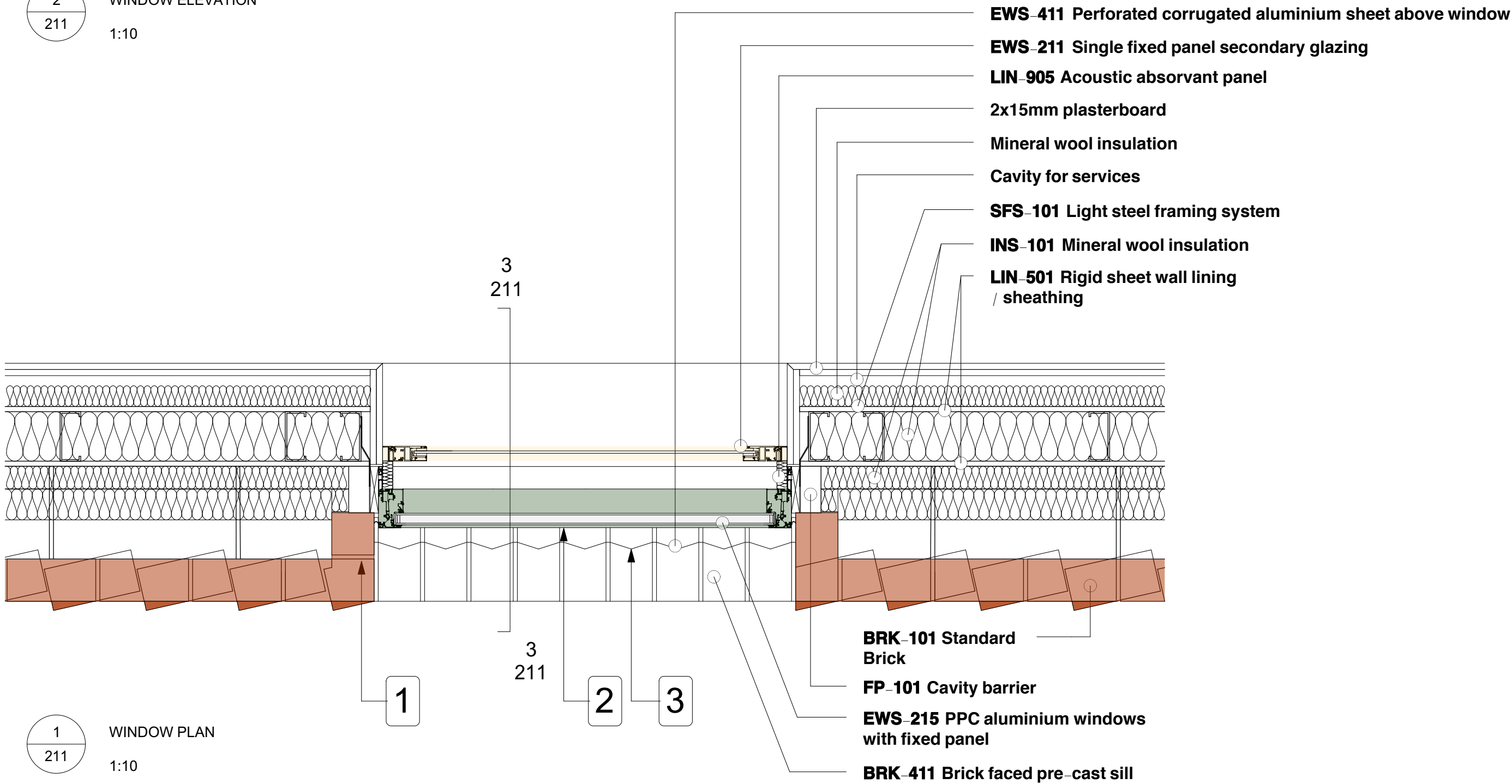
Drawing
Typical Window Bay - Type B

Scale	Status	Date	Drawn	Checked
1:10	CONDITION 3	24/06/21	AM	
Drawing No.		Revision		

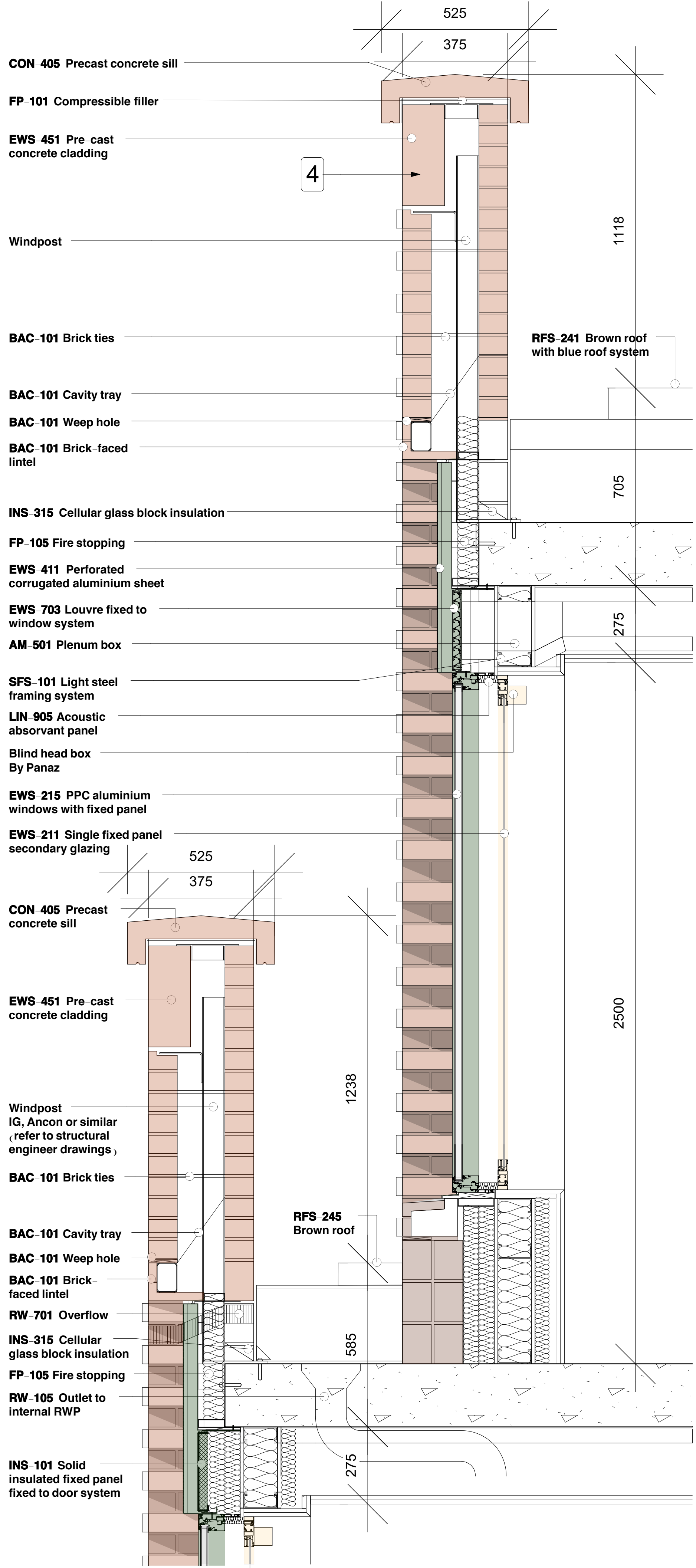
4603-PL-210



2
211
WINDOW ELEVATION
1:10



1
211
WINDOW PLAN
1:10



3
211
WINDOW SECTION
1:10

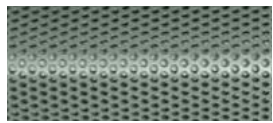
This drawing is the copyright of Axiom Architects. The contractor is to check all site dimensions and levels before work starts. This drawing must be read with and checked against all structural and other specialist drawings, specification and bills of quantities. Notify architect of any discrepancies. The contractor is to comply with all current British Standards and Building Regulations whether or not specifically stated on these drawings. **Do not scale** from drawings.



1 Brickwork by Wienerberger - Warnham Red Stock laid in stretcher bond with flush mortar joints.



2 Aluminium powder coated with a green hue for window frames, doors and balustrades.



3 'Zig-zag' aluminium powder coated with a green hue. Elements perforated above windows for ventilation purposes and solid when used for decorative purposes on the ground floor and residential unit.

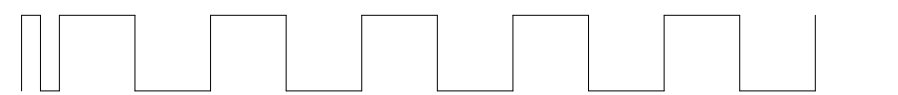


4 Pigmented reconstituted stone with a consistent aggregate type and size range. The Colour matched with the brick.



5 Pigmented reconstituted stone, hue to match ground floor pre-cast and fluted texture to reflect 'zig-zag' panels.

0 50 150 250 350 450 550 650 750 850 950 1050 mm



Rev	Date	Description	By	Chk
-----	------	-------------	----	-----



1 Brooklands Yard Southover High Street Lewes East Sussex BN7 1HU
Tel. 01273 479434 www.axiomarchitects.co.uk

Client

Demar BVI Ltd.

Project

hub by Premier Inn
115-119 Camden High Street London

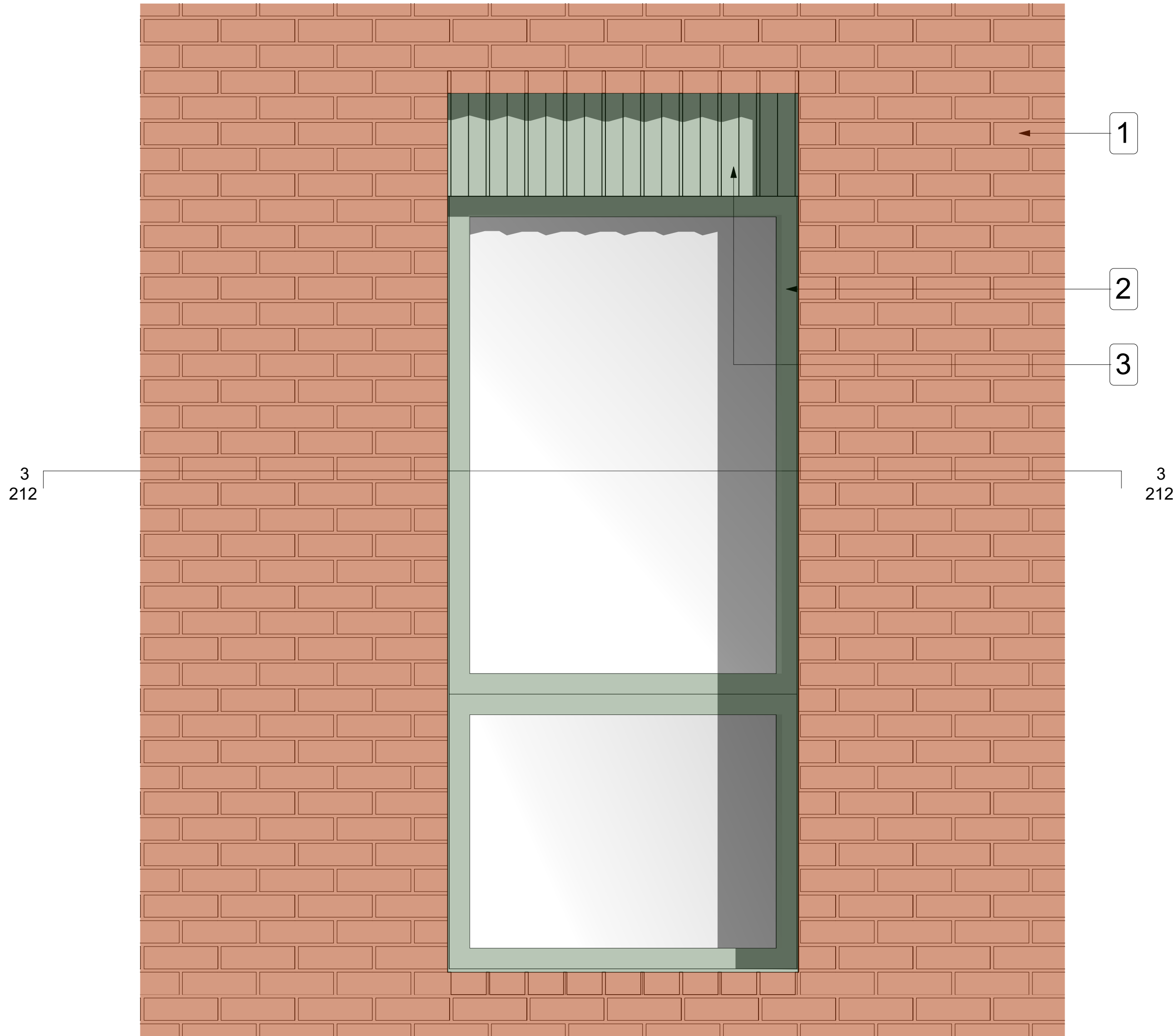
Drawing

Typical Window Bay - Type C

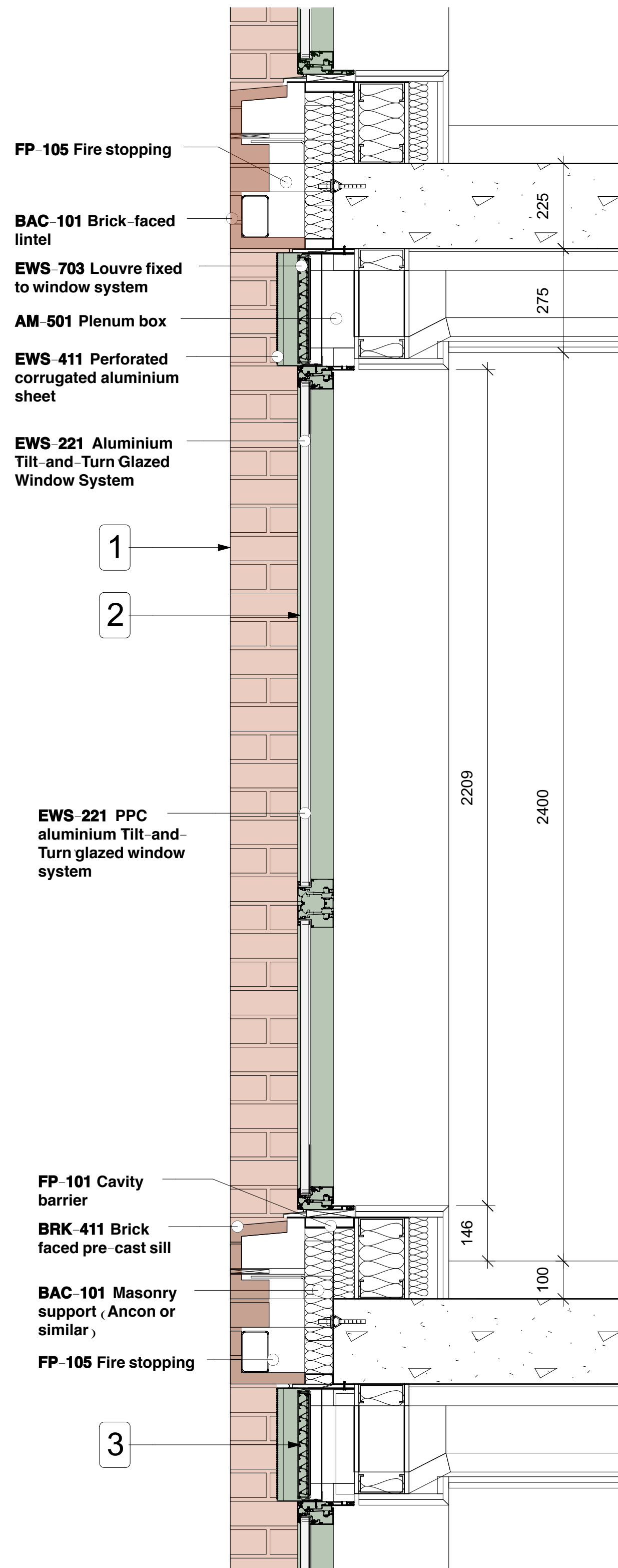
Scale	Status	Date	Drawn	Checked
1:10	CONDITION 3	24/06/21	AM	

Drawing No.	Revision
-------------	----------

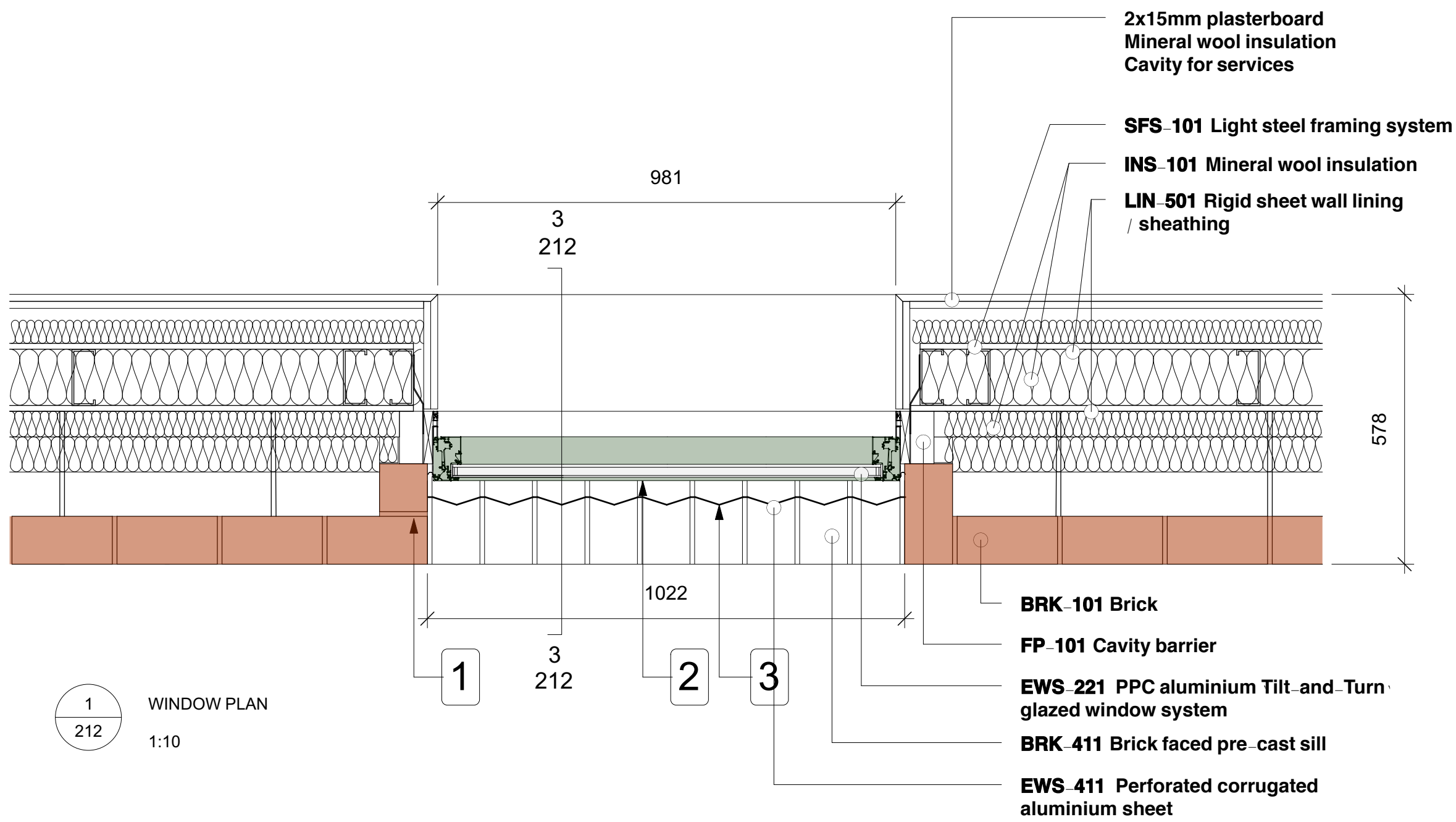
4603-PL-211



2
212
WINDOW ELEVATION
1:10

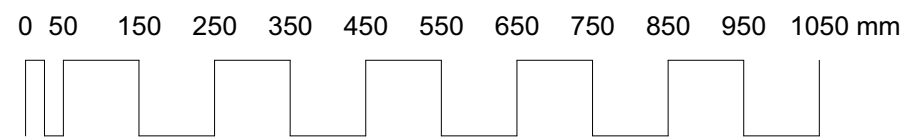


3
212
WINDOW SECTION
1:10



1
212
WINDOW PLAN
1:10

- 1 Brickwork by Wienerberger - Warnham Red Stock laid in stretcher bond with flush mortar joints.
- 2 Aluminium powder coated with a green hue for window frames, doors and balustrades.
- 3 'Zig-zag' aluminium powder coated with a green hue. Elements perforated above windows for ventilation purposes and solid when used for decorative purposes on the ground floor and residential unit.
- 4 Pigmented reconstituted stone with a consistent aggregate type and size range. The Colour matched with the brick.
- 5 Pigmented reconstituted stone, hue to match ground floor pre-cast and fluted texture to reflect 'zig-zag' panels.



Rev	Date	Description	By	Chk
-----	------	-------------	----	-----

AXIOM ARCHITECTS
1 Brooklands Yard Southover High Street Lewes East Sussex BN7 1HU
Tel. 01273 479434 www.axiomarchitects.co.uk

Client
Demar BVI Ltd.

Project
hub by Premier Inn
115-119 Camden High Street London

Drawing
Typical Window Bay - Type D

Scale	Status	Date	Drawn	Checked
1:10	CONDITION 3	24/06/21	AM	
Drawing No.		Revision		

4603-PL-212