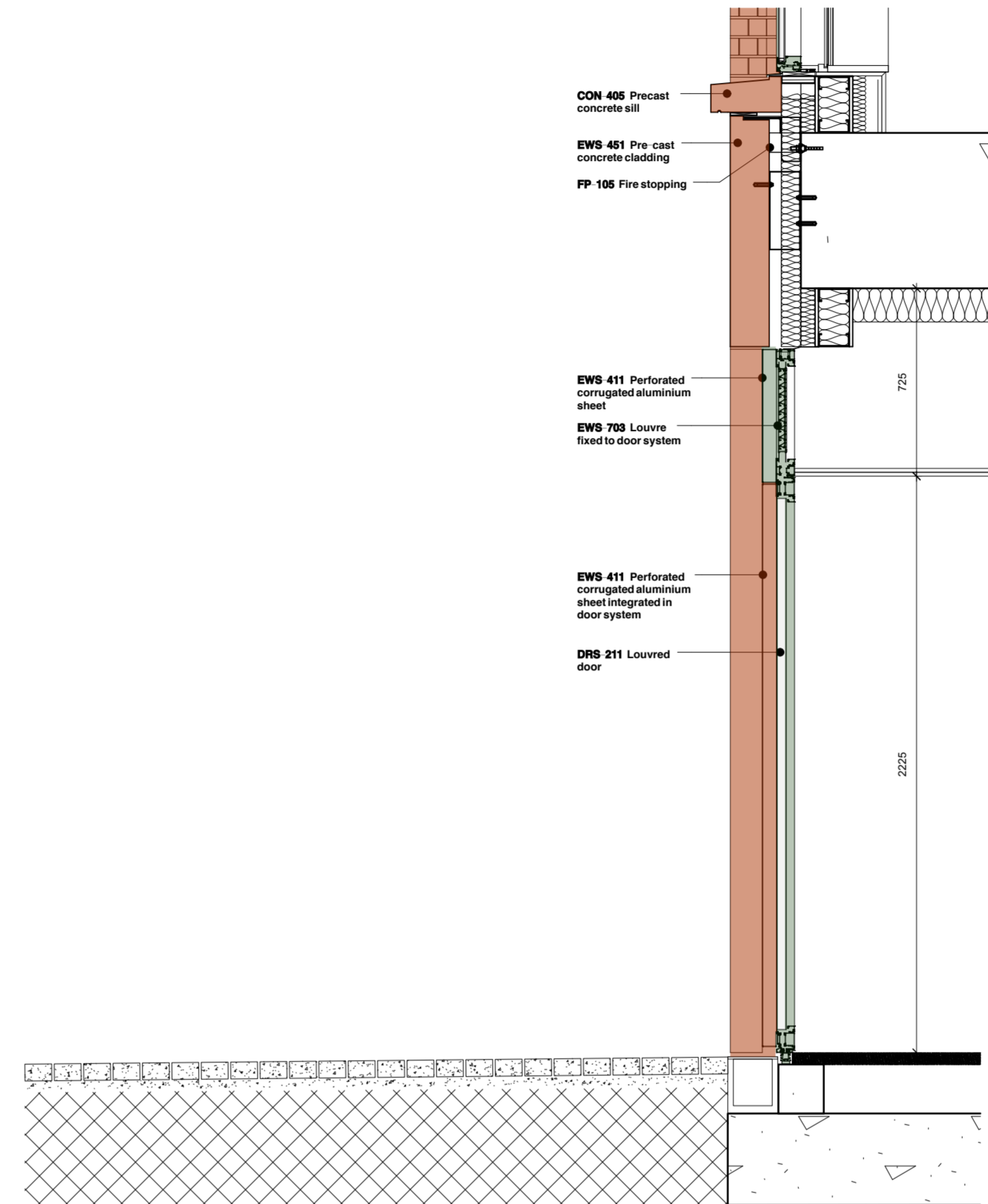
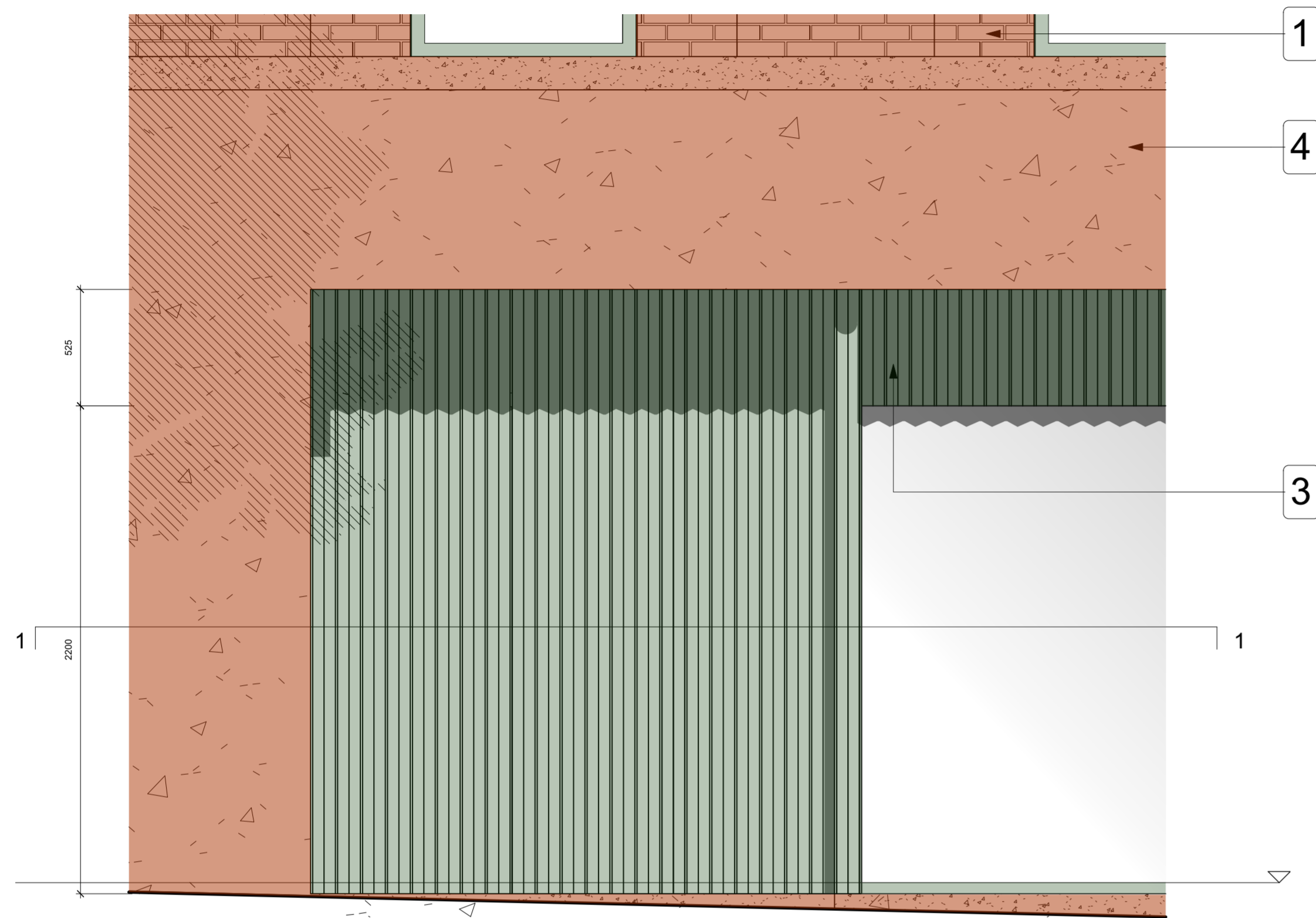





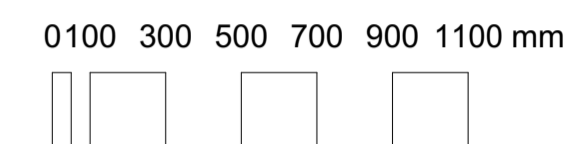


This drawing is the copyright of Axiom Architects. The contractor is to check all site dimensions and levels before work starts. This drawing must be read with and checked against all structural and other specialist drawings, specification and bills of quantities. Notify architect of any discrepancies. The contractor is to comply with all current British Standards and Building Regulations whether or not specifically stated on these drawings. **Do not scale** from drawings.

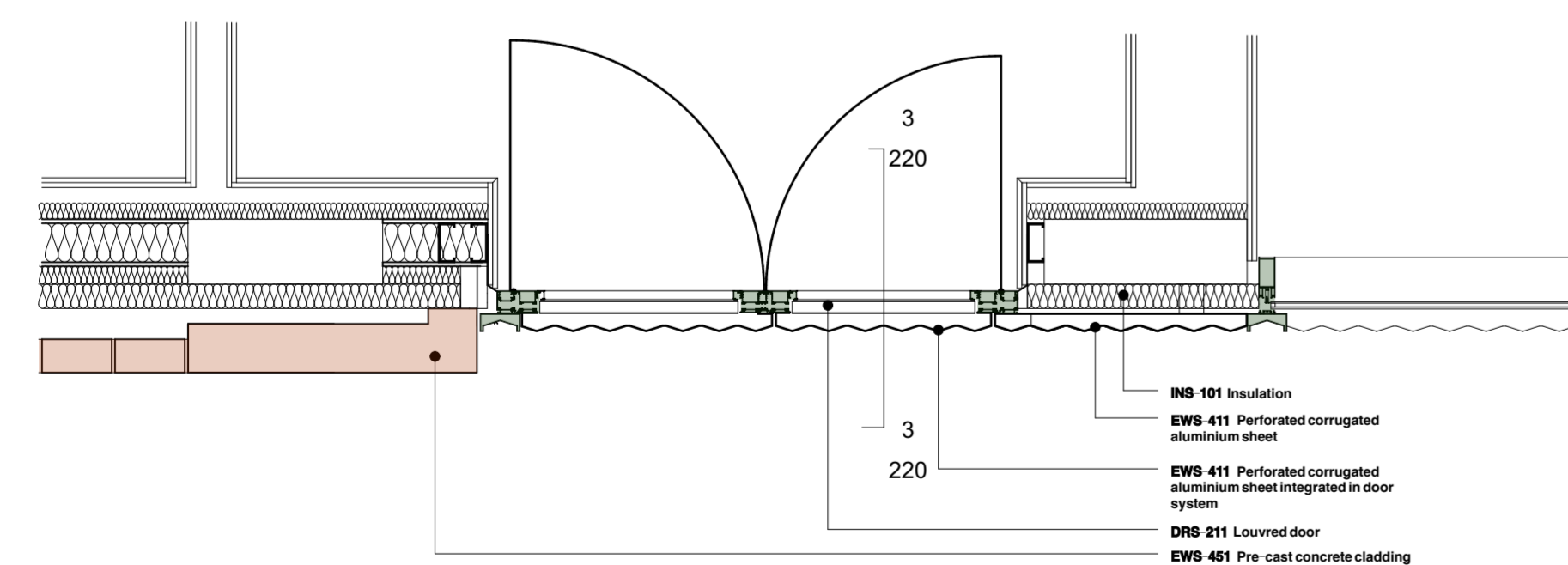


-  1 Brickwork by Wienerberger - Wamham Red Stock laid in stretcher bond with flush mortar joints.
-  2 Aluminium powder coated with a green hue for window frames, doors and balustrades.
-  3 'Zig-zag' aluminium powder coated with a green hue. Elements perforated above windows for ventilation purposes and solid when used for decorative purposes on the ground floor and residential unit.
-  4 Pigmented reconstituted stone with a consistent aggregate type and size range. The Colour matched with the brick.
-  5 Pigmented reconstituted stone, hue to match ground floor pre-cast and fluted texture to reflect 'zig-zag' panels.



2 REFUSE STORE ENTRANCE ELEVATION
1:20

3 SECTION 1 THROUGH DOOR
1:20



1 CUT AA THROUGH ENTRANCE
1:20

Rev	Date	Description	By	Chk

AXIOM ARCHITECTS
 1 Brooklands Yard Southover High Street Lewes East Sussex BN7 1HU
 Tel. 01273 479434 www.axiomarchitects.co.uk

Client
Demar BVI Ltd.






Project
 hub by Premier Inn
 115-119 Camden High Street London

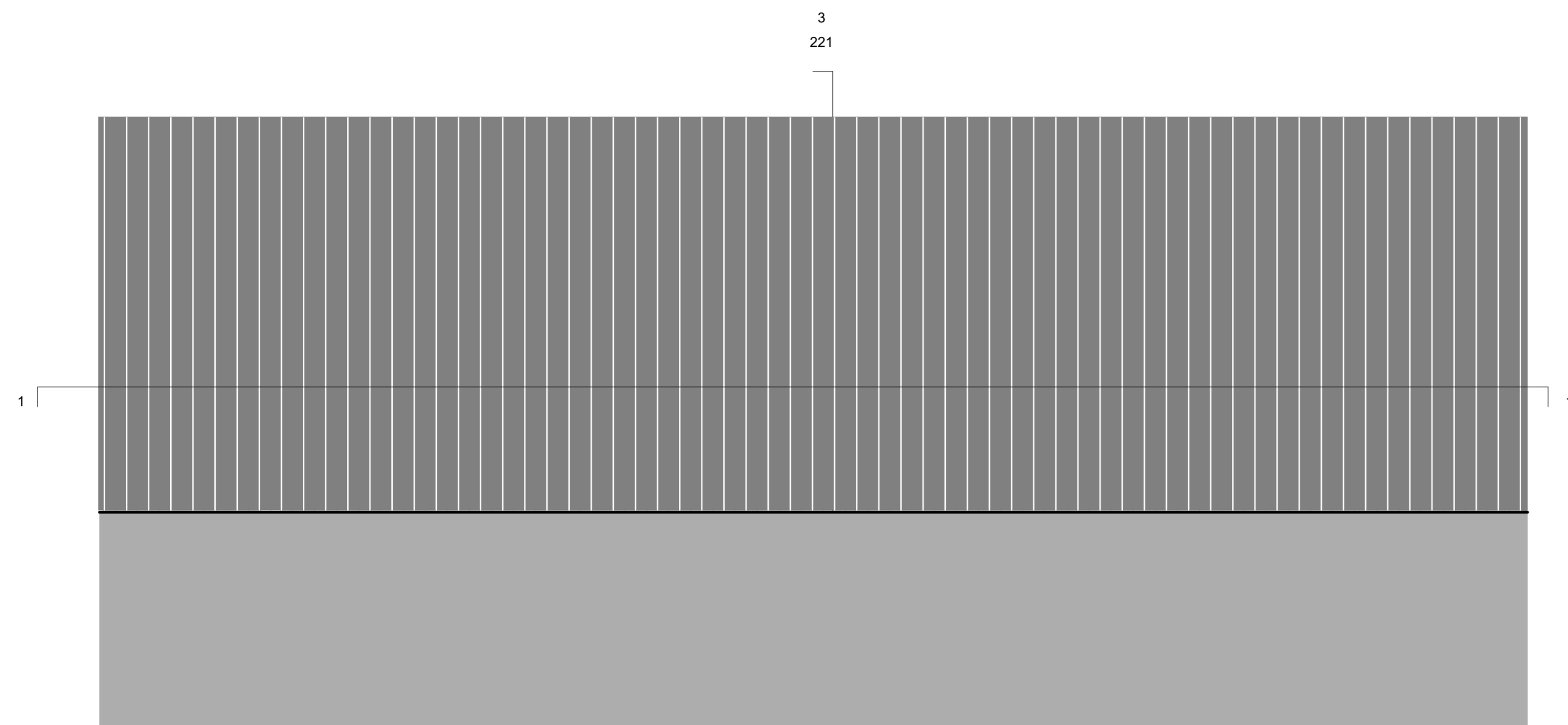
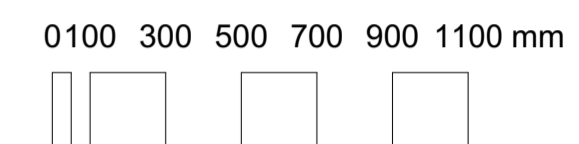
Drawing
Louvered Doors

Scale	Status	Date	Drawn	Checked
1:20	CONDITION 3	24/06/21 AM		

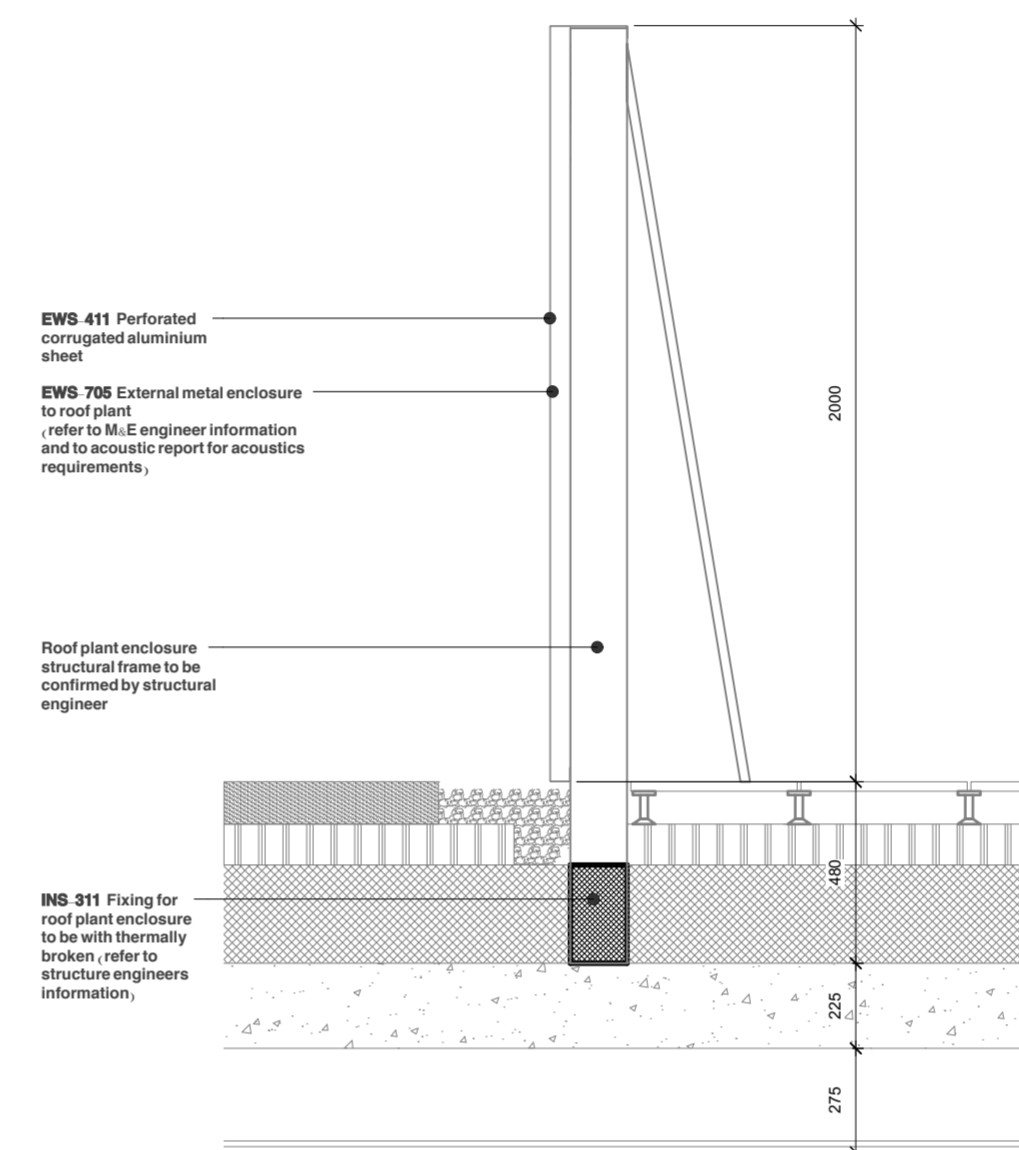
Drawing No.	Revision

4603-PL-220

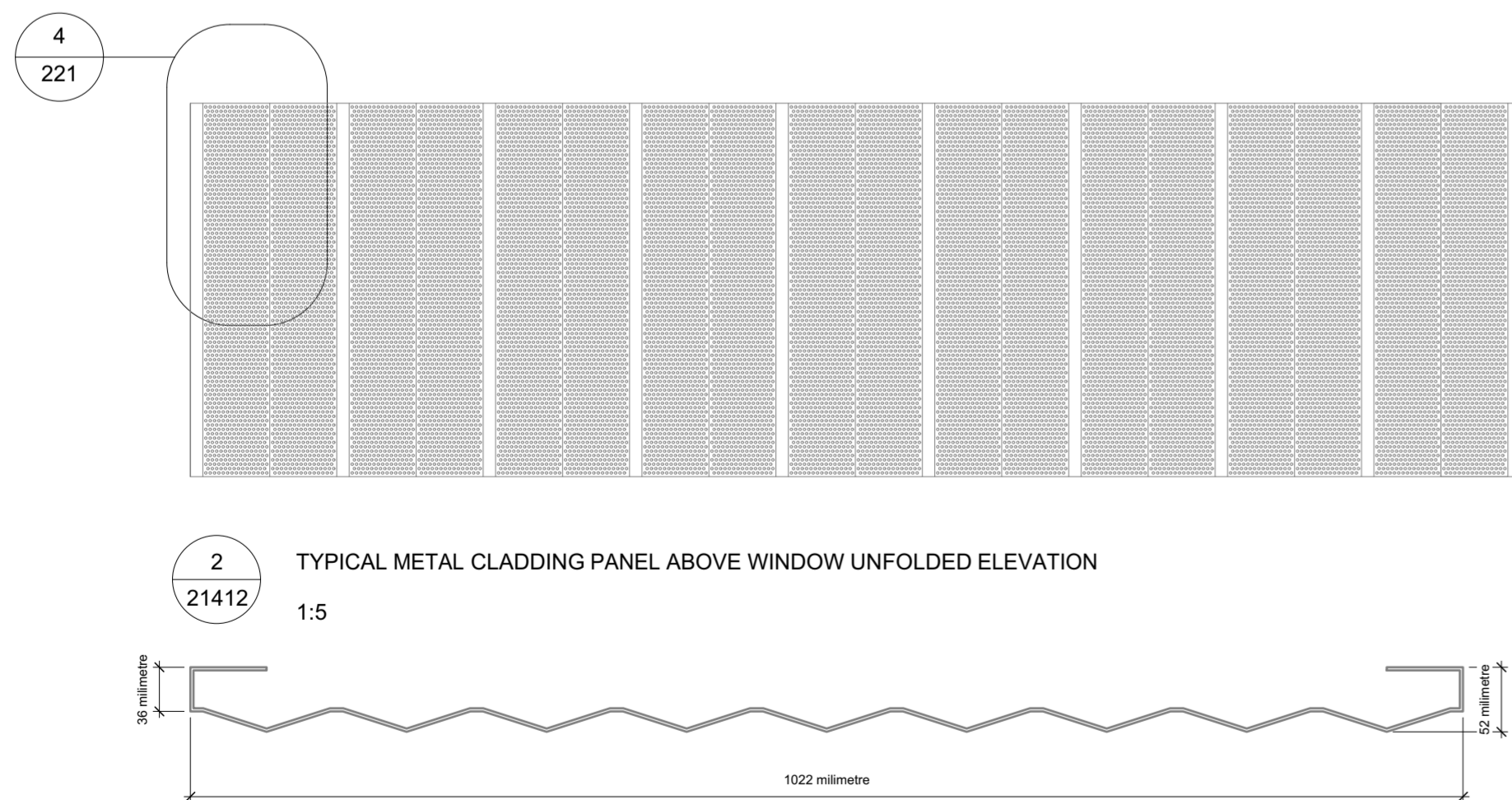
-  1 Brickwork by Wienerberger - Wamham Red Stock laid in stretcher bond with flush mortar joints.
-  2 Aluminium powder coated with a green hue for window frames, doors and balustrades.
-  3 'Zig-zag' aluminium powder coated with a green hue. Elements perforated above windows for ventilation purposes and solid when used for decorative purposes on the ground floor and residential unit.
-  4 Pigmented reconstituted stone with a consistent aggregate type and size range. The Colour matched with the brick.
-  5 Pigmented reconstituted stone, hue to match ground floor pre-cast and fluted texture to reflect 'zig-zag' panels.



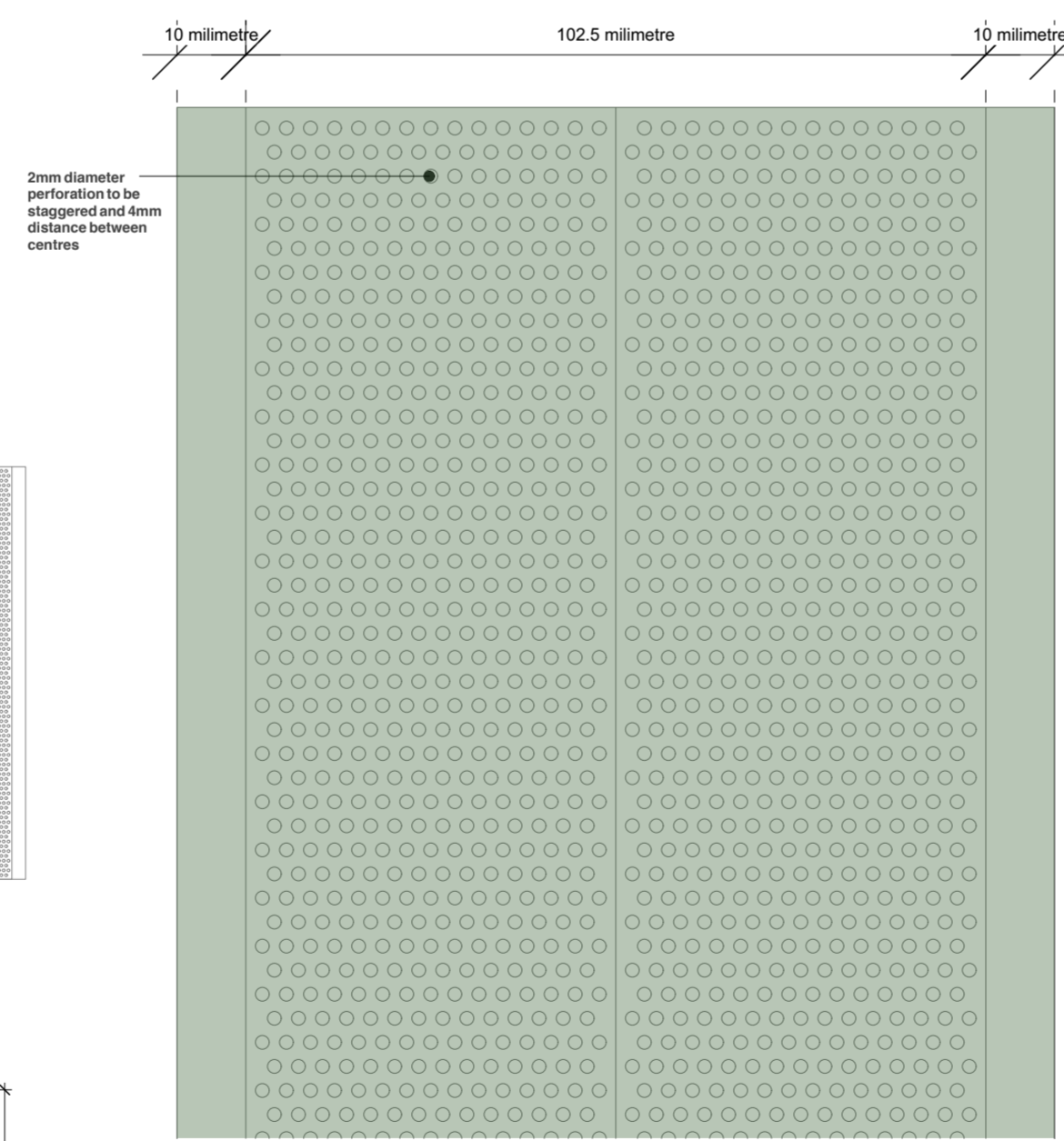
2 ROOF PLANT CLADDING PARTIAL ELEVATION
221 1:20



3 SECTION 1 THROUGH ROOF PLANT ENCLOSURE
221 1:20



2 TYPICAL METAL CLADDING PANEL ABOVE WINDOW UNFOLDED ELEVATION
21412 1:5



4 CLADDING PERFORATION DETAIL
221

1 CUT THROUGH METAL CLADDING PANEL
221 1:5

Rev	Date	Description	By	Chk
-----	------	-------------	----	-----

AXIOM ARCHITECTS
 1 Brooklands Yard Southover High Street Lewes East Sussex BN7 1HU
 Tel. 01273 479434 www.axiomarchitects.co.uk

Client
Demar BVI Ltd.

Project
hub by Premier Inn
115-119 Camden High Street London

Drawing
Metal Cladding

Scale	Status	Date	Drawn	Checked
1:20	CONDITION 3	24/06/21 AM		

Drawing No. Revision

4603-PL-221

All rights reserved.
No part of this document may be reproduced in any form without
permission in writing from the publisher.

Axiom Architects LLP 2020

