

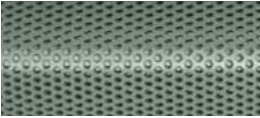




- 

1 Brickwork by Wienerberger - Warnham Red Stock laid in stretcher bond with flush mortar joints.
- 

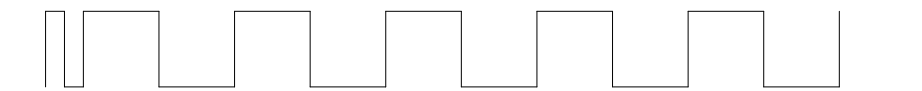
2 Aluminium powder coated with a green hue for window frames, doors and balustrades.
- 

3 'Zig-zag' aluminium powder coated with a green hue. Elements perforated above windows for ventilation purposes and solid when used for decorative purposes on the ground floor and residential unit.
- 


4 Pigmented reconstituted stone with a consistent aggregate type and size range. The Colour matched with the brick.
- 

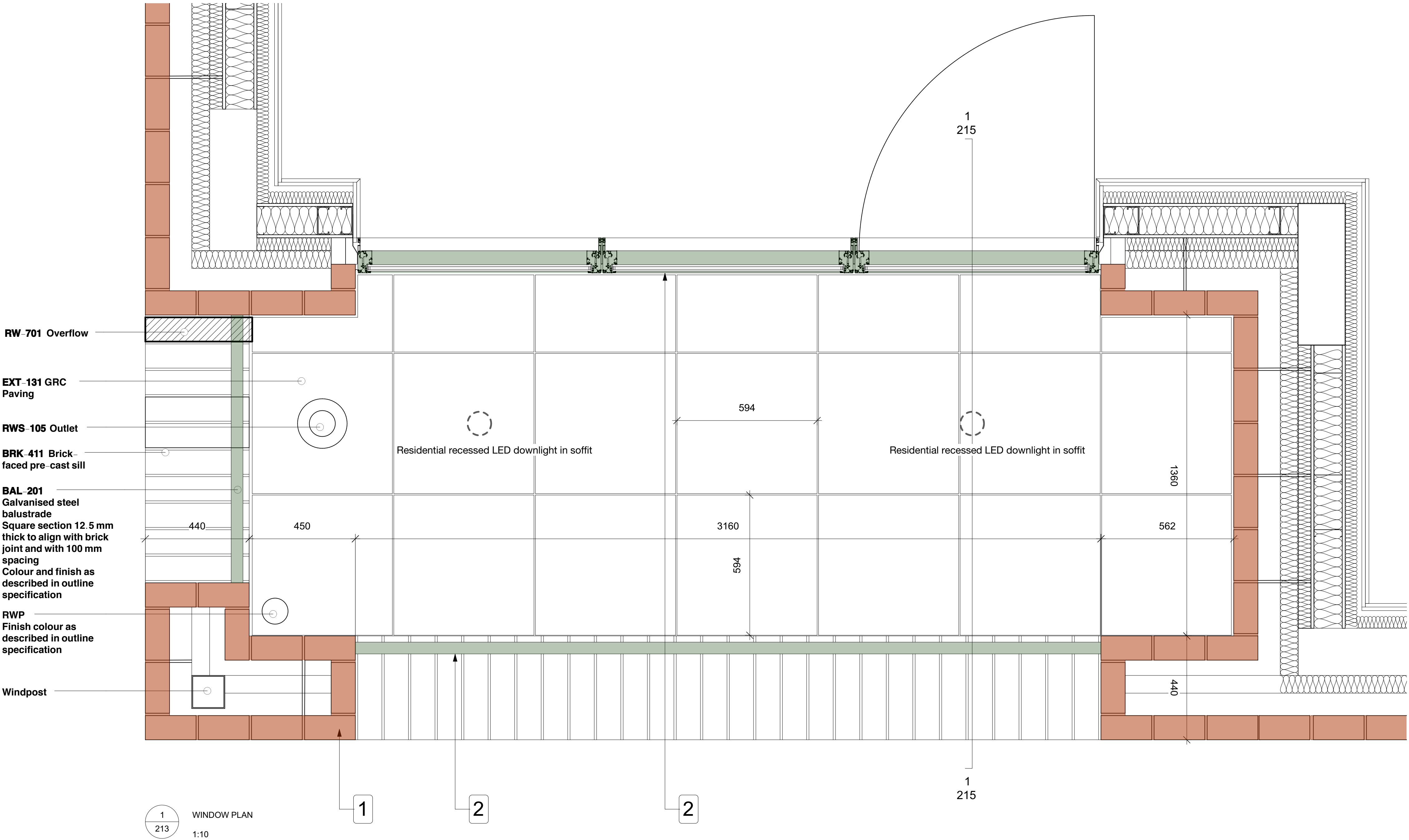
5 Pigmented reconstituted stone, hue to match ground floor pre-cast and fluted texture to reflect 'zig-zag' panels.

0 50 150 250 350 450 550 650 750 850 950 1050 mm



PSH.

LUMINAIRE REFERENCE			
LUMINAIRE LOCATION:	External Residential Balcony		-
MOUNTING METHOD	Recessed		
CEILING TYPE	-		
DESCRIPTION			
Recessed			
ILLUSTRATION, DETAILS, PHOTOMETRIC DATA, ACCESSORIES			
			
MANUFACTURER:			
JCC		Contact Details	
Manufacturer Reference			
JCC V50 4W Ref: WHIT030			
SOURCE/LAMP DATA:			
Rated luminous flux (in lm)	806	Rated input power (in W)	4w
Correlated Colour Temperature (CCT in K)	3000	Luminaire efficacy (in lm/W)	88
Colour	White	Rated Colour Rendering Index (CRI)	tbc
Rated life	5100	UGRL	NA
Cable Length & Cable CSA in mm² & Type	Hardwired	MacAdam Step	NA
Connector	Hardwired	IP Rating	IP65
Dimensions (mm)	84mm(dia) x 67mm(D)	Weight	0.2kg
Control	Local switch	Dimmable	No



1 213 WINDOW PLAN
1:10

Rev Date Description By Chk



1 Brooklands Yard Southover High Street Lewes East Sussex BN7 1HU
Tel. 01273 479434 www.axiomarchitects.co.uk

Client

Demar BVI Ltd.

Project

hub by Premier Inn
115-119 Camden High Street London

Drawing


Typical Balcony Bay Plan


Scale Status Date Drawn Checked
1:10 CONDITION 3 24/06/21 AM

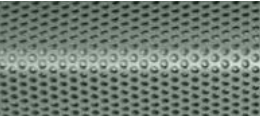
Drawing No. Revision


4603-PL-213


This drawing is the copyright of Axiom Architects. The contractor is to check all site dimensions and levels before work starts. This drawing must be read with and checked against all structural and other specialist drawings, specification and bills of quantities. Notify architect of any discrepancies. The contractor is to comply with all current British Standards and Building Regulations whether or not specifically stated on these drawings. **Do not scale** from drawings.

- 

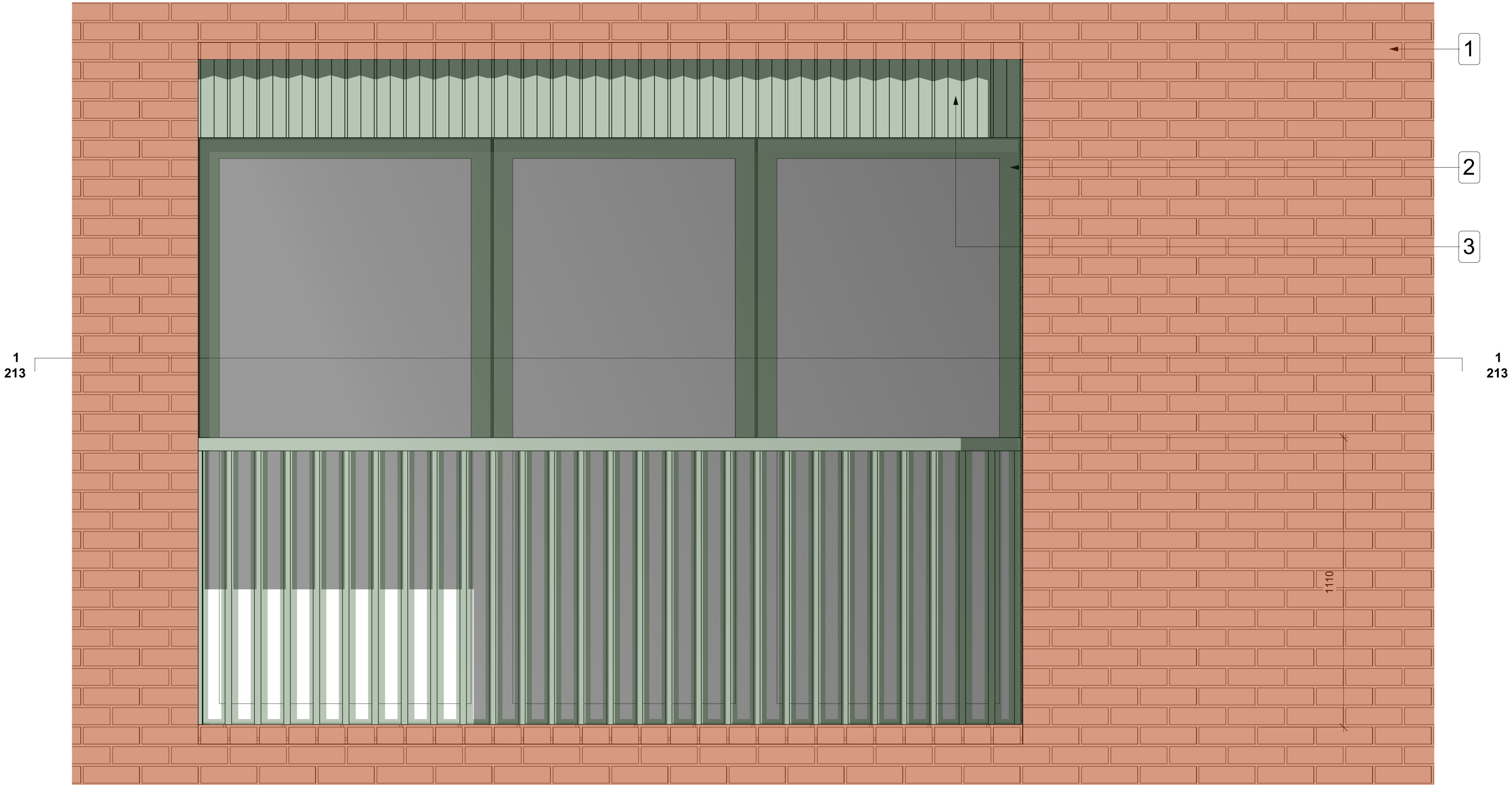
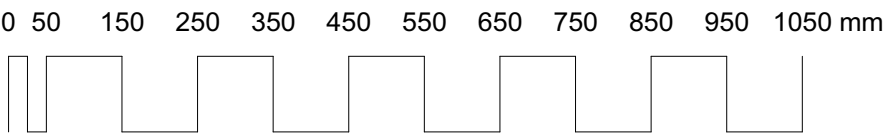
1 Brickwork by Wienerberger - Warnham Red Stock laid in stretcher bond with flush mortar joints.
- 

2 Aluminium powder coated with a green hue for window frames, doors and balustrades.
- 

3 'Zig-zag' aluminium powder coated with a green hue. Elements perforated above windows for ventilation purposes and solid when used for decorative purposes on the ground floor and residential unit.
- 

4 Pigmented reconstituted stone with a consistent aggregate type and size range. The Colour matched with the brick.
- 

5 Pigmented reconstituted stone, hue to match ground floor pre-cast and fluted texture to reflect 'zig-zag' panels.



2
214 WINDOW ELEVATION
1:10

Rev	Date	Description	By	Chk
-----	------	-------------	----	-----



**AXIOM
ARCHITECTS**

1 Brooklands Yard Southover High Street Lewes East Sussex BN7 1HU
Tel. 01273 479434 www.axiomarchitects.co.uk

Client
Demar BVI Ltd.

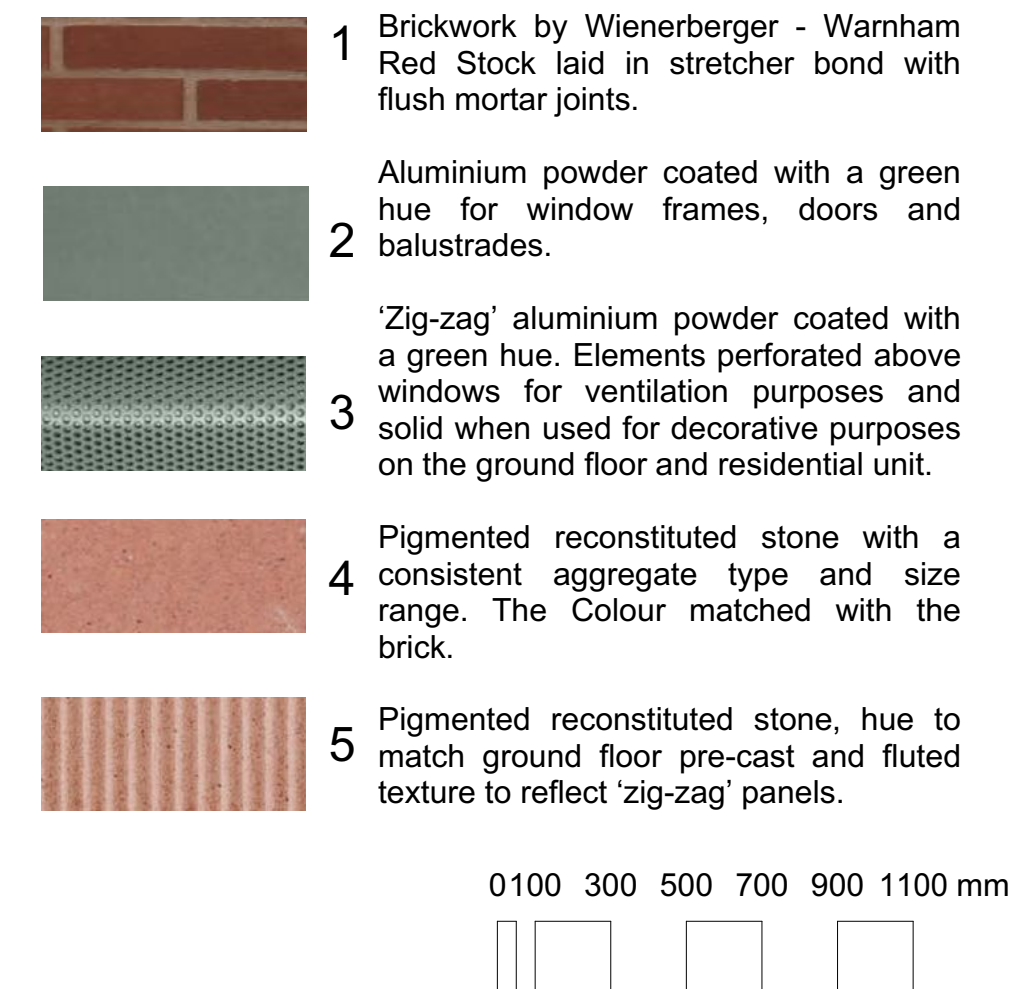
Project
hub by Premier Inn
115-119 Camden High Street London


Drawing
Typical Balcony Bay Elevation

Scale	Status	Date	Drawn	Checked
1:10	CONDITION 3	24/06/21	AM	
Drawing No.				Revision

4603-PL-214

This drawing is the copyright of Axiom Architects. The contractor is to check all site dimensions and levels before work starts. This drawing must be read with and checked against all structural and other specialist drawings, specification and bills of quantities. Notify architect of any discrepancies. The contractor is to comply with all current British Standards and Building Regulations whether or not specifically stated on these drawings. **Do not scale** from drawings.



LUMINAIRE REFERENCE:		External Above Door	
MOUNTING METHOD:		Surface Mounted	
CEILING TYPE:		Wall mounted	
<p>* E denotes 3hr Emergency integral battery to BS EN 60598-2-22:1999+A2:2009.</p>			
DESCRIPTION			
High Output IP65 emergency bulkhead			
ILLUSTRATION, DETAILS, PHOTOMETRIC DATA, ACCESSORIES			
			
MANUFACTURER:			
Thorn Lighting		Contact Details	
Manufacturer Reference			
Voyager E LED / VOYAGER E LED BULKHEAD E3NM			
SOURCE/LAMP DATA:			
Rated luminous flux (in lm)	105	Rated input power (in W)	4.5W
Correlated Colour Temperature (CCT in K)		Luminaire efficacy (in lm/W)	36
Colour	white with opal polycarbonate	Rated Colour Rendering Index (CRI)	N/A
Rated life	TBC	UGRL	N/A
Cable Length & Cable CSA in mm² & Type	Hardwired	MacAdam Step	N/A
Connector	Hardwired	IP Rating	IP65
Dimensions (mm)	350 x 100 x 80 mm	Weight	0.78kg
Control	DALI	Dimmable	No

Rev	Date	Description	By	Chk
-----	------	-------------	----	-----



Client
Demar BVI Ltd.

Project
hub by Premier Inn
115-119 Camden High Street London

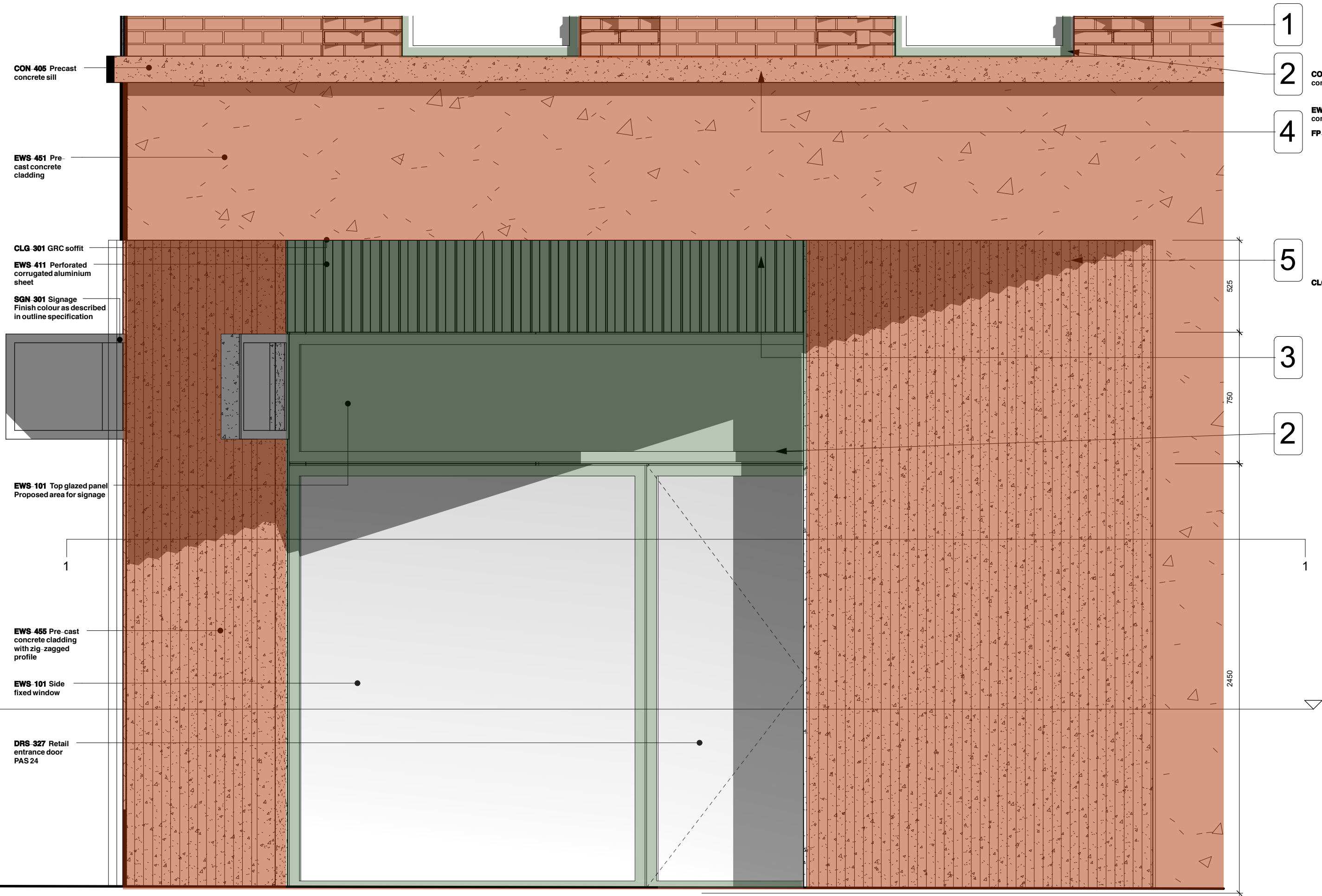
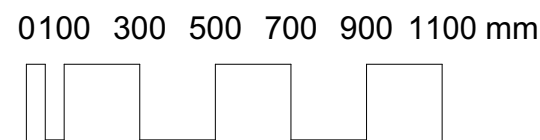
Drawing

Shopfront

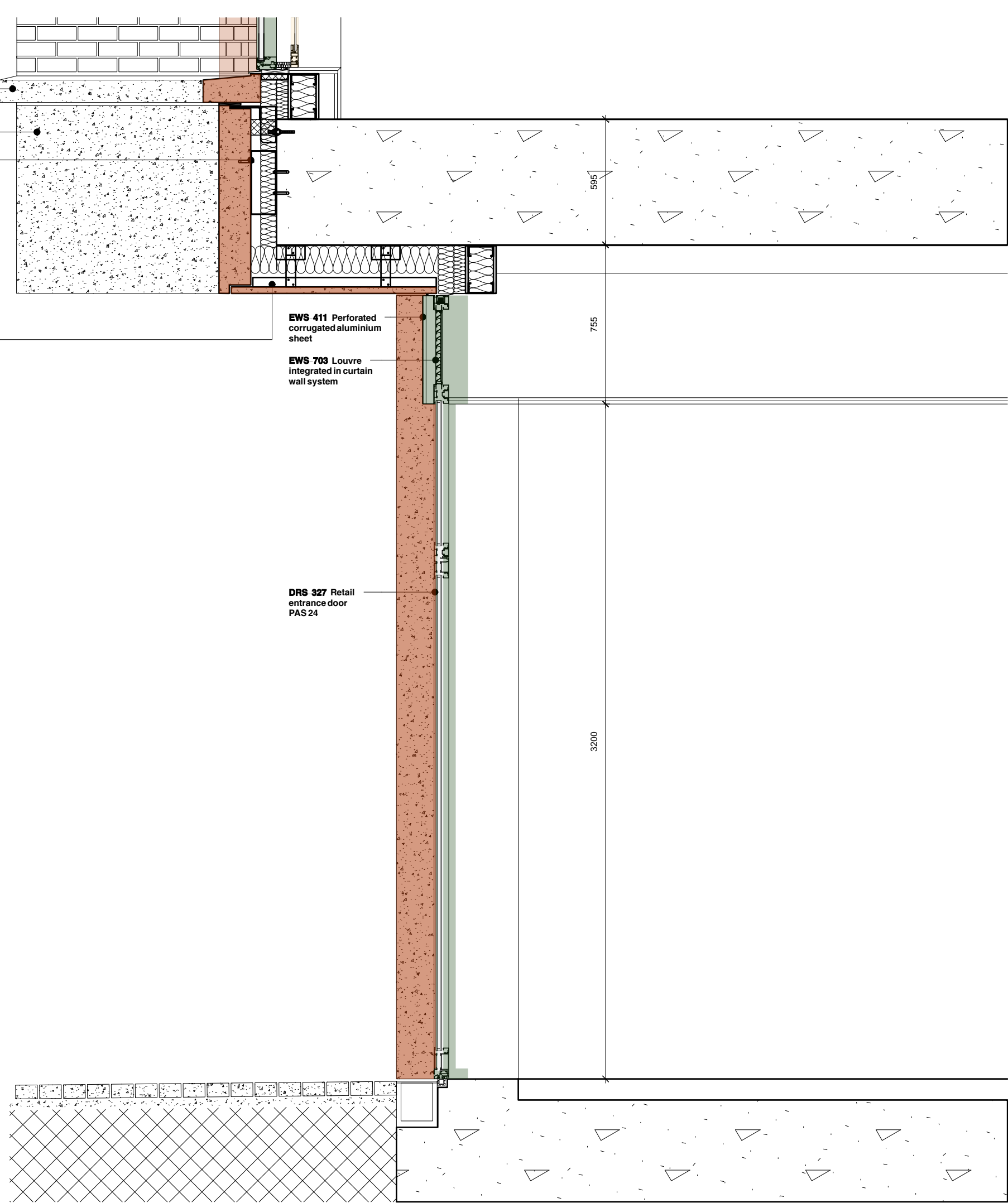
Scale	Status	Date	Drawn	Checked
1:20	CONDITION 3	24/06/21	AM	
Drawing No.				Revision

This drawing is the copyright of Axiom Architects. The contractor is to check all site dimensions and levels before work starts. This drawing must be read with and checked against all structural and other specialist drawings, specification and bills of quantities. Notify architect of any discrepancies. The contractor is to comply with all current British Standards and Building Regulations whether or not specifically stated on these drawings. **Do not scale** from drawings.

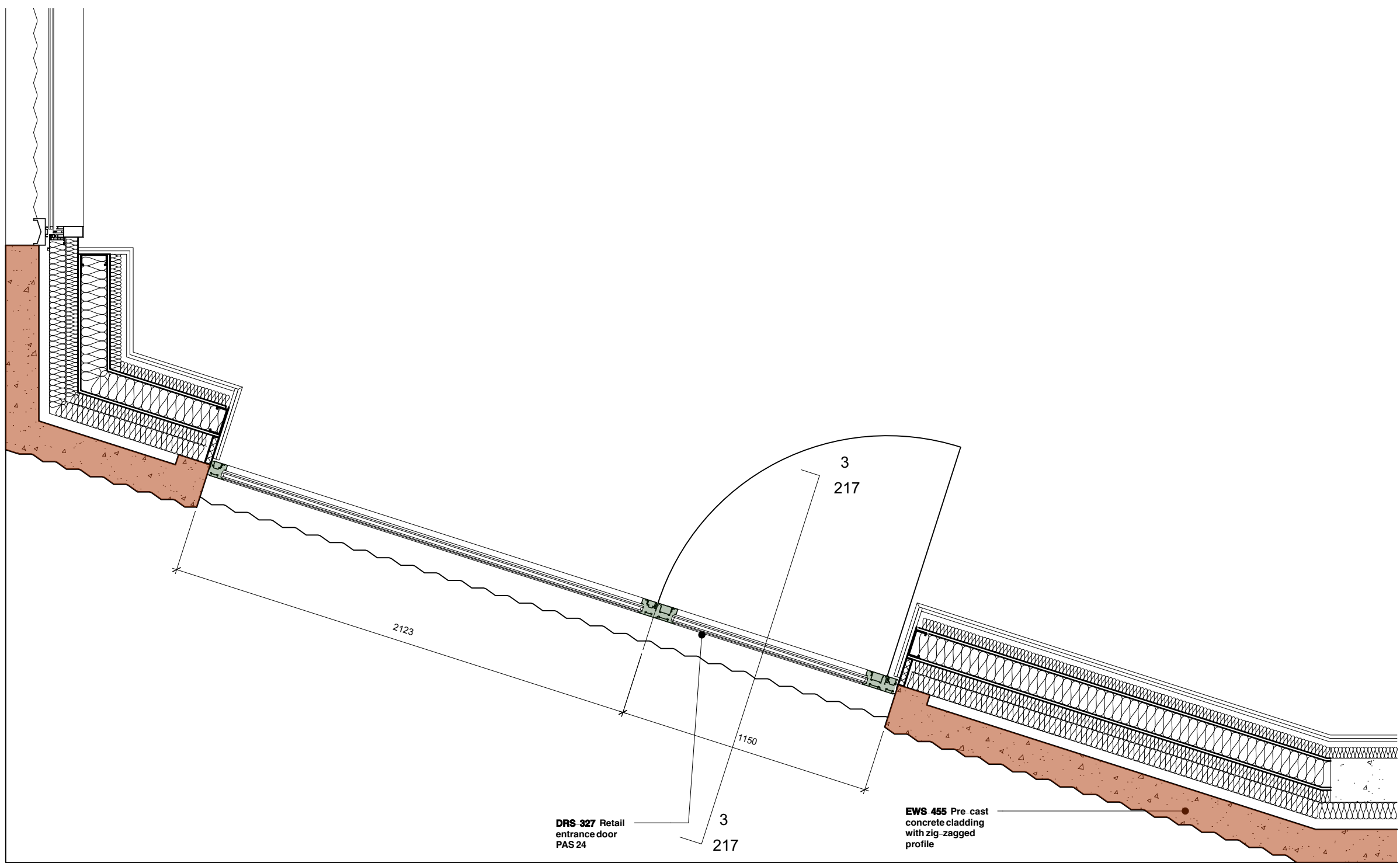
- 1 Brickwork by Wienerberger - Wamham Red Stock laid in stretcher bond with flush mortar joints.
- 2 Aluminium powder coated with a green hue for window frames, doors and balustrades.
- 3 'Zig-zag' aluminium powder coated with a green hue. Elements perforated above windows for ventilation purposes and solid when used for decorative purposes on the ground floor and residential unit.
- 4 Pigmented reconstituted stone with a consistent aggregate type and size range. The Colour matched with the brick.
- 5 Pigmented reconstituted stone, hue to match ground floor pre-cast and fluted texture to reflect 'zig-zag' panels.



2 RETAIL ENTRANCE ELEVATION
217 1:20



3 SECTION 1 THROUGH ENTRANCE DOOR
217 1:20



1 CUT AA THROUGH RETAIL ENTRANCE
217 1:20

Rev	Date	Description	By	Chk
-----	------	-------------	----	-----

AXIOM ARCHITECTS
1 Brooklands Yard Southover High Street Lewes East Sussex BN7 1HU
Tel. 01273 479434 www.axiomarchitects.co.uk

Client
Demar BVI Ltd.

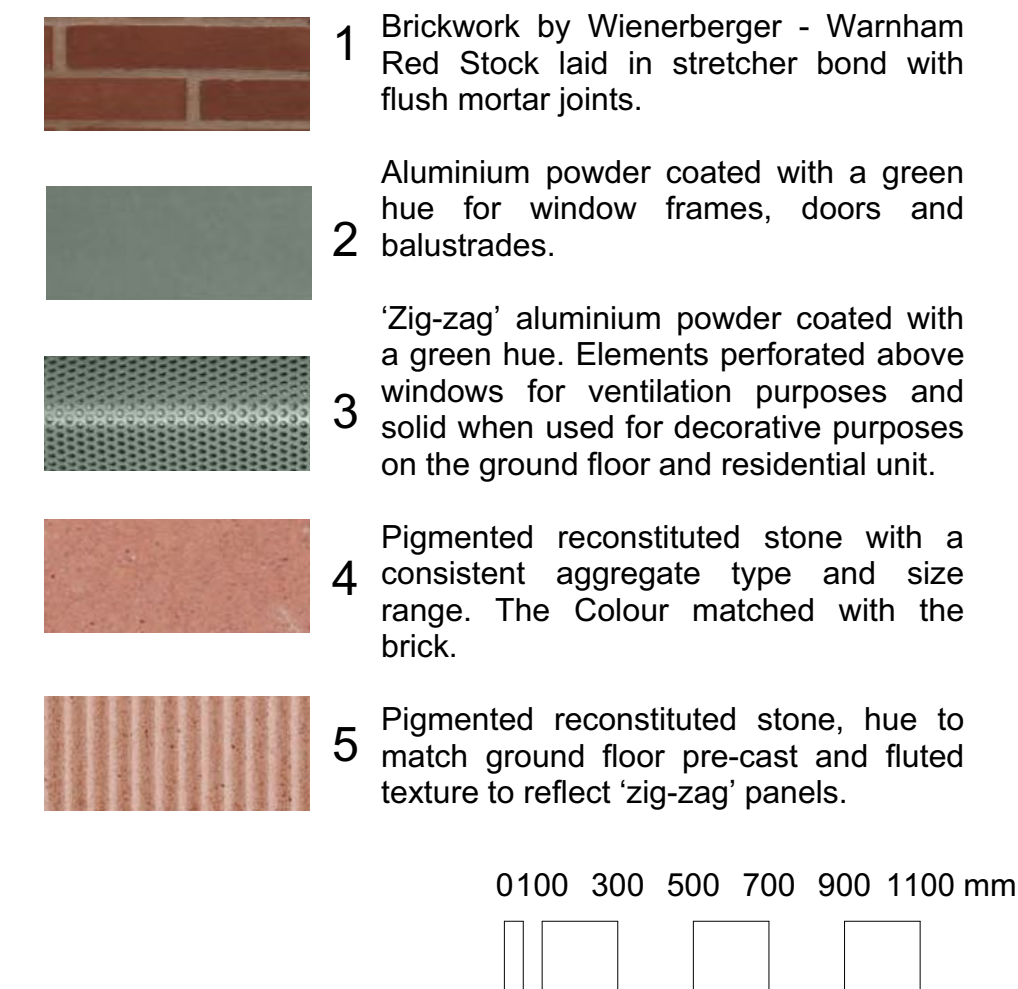
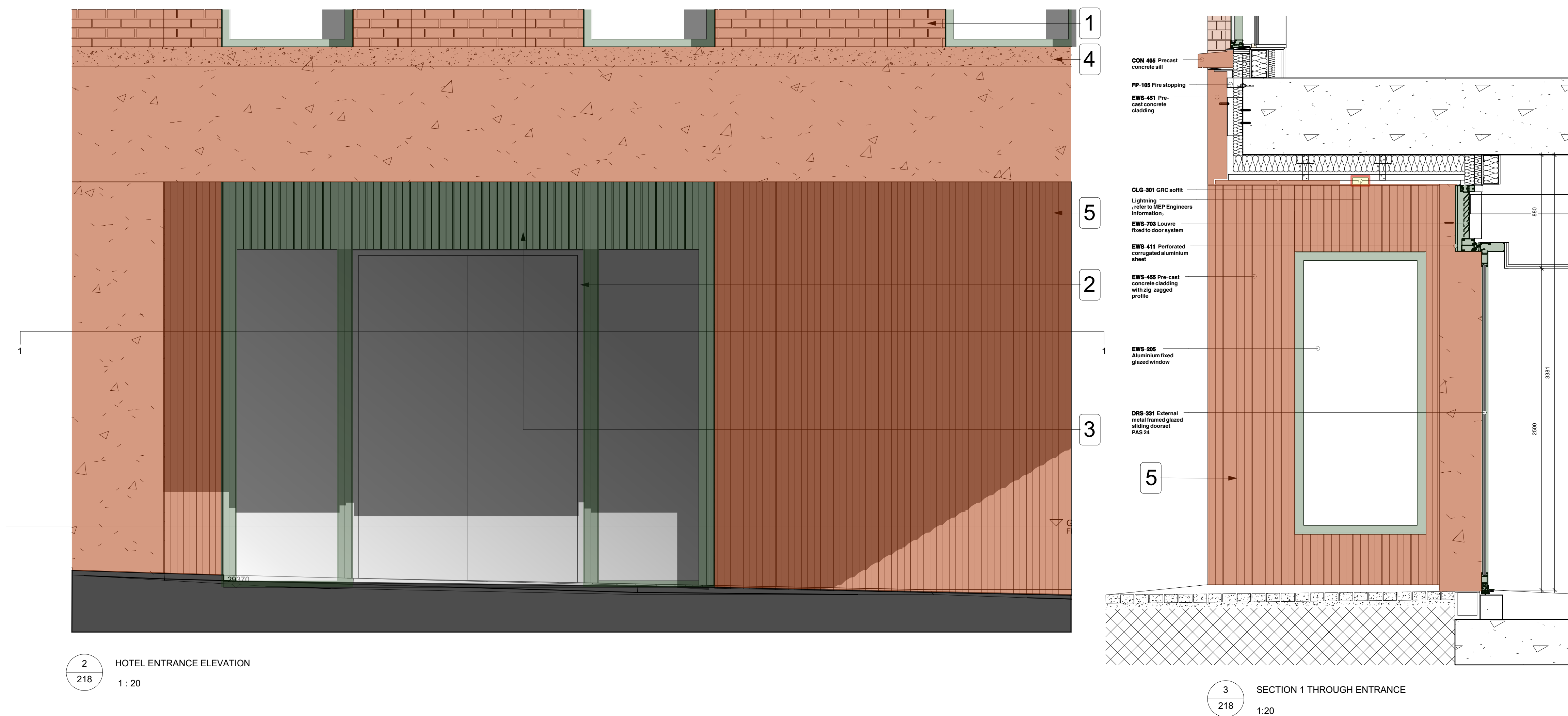
Project
hub by Premier Inn
115-119 Camden High Street London

Drawing
Retail Entrance

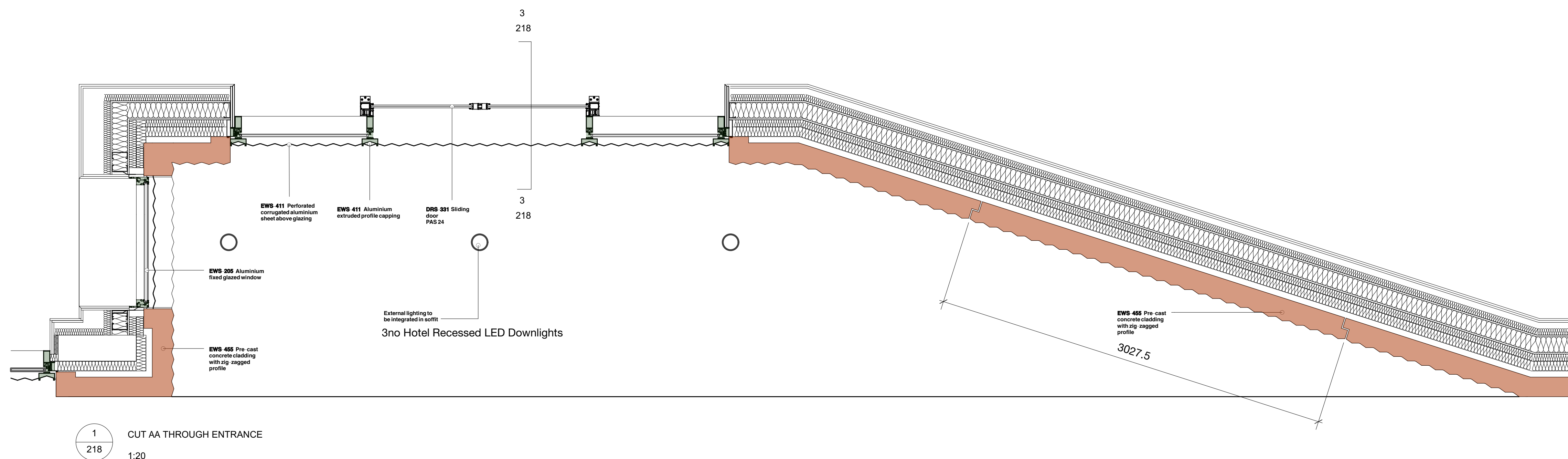
Scale	Status	Date	Drawn	Checked
1:20	CONDITION 3	24/06/21 AM		
Drawing No.			Revision	

4603-PL-217

This drawing is the copyright of Axiom Architects. The contractor is to check all site dimensions and levels before work starts. This drawing must be read with and checked against all structural and other specialist drawings, specification and bills of quantities. Notify architect of any discrepancies. The contractor is to comply with all current British Standards and Building Regulations whether or not specifically stated on these drawings. **Do not scale** from drawings.



LUMINAIRE REFERENCE		A5	
LUMINAIRE LOCATION:	Canopy		
MOUNTING METHOD	Recessed		
CEILING TYPE	Plasterboard		
DESCRIPTION	Recessed LED luminaire with a remote non-dimmable power supply unit, luminaire made of aluminium alloy, clear safety glass. Protection class IP65.		
Recessed LED Downlight			
ILLUSTRATION, DETAILS, PHOTOMETRIC DATA, ACCESSORIES			
Half beam angle 28°			
MANUFACTURER:			
Bega	Contact Details		
Manufacturer Reference	Bega Lighting UK ltd Suite 9, Milton Heath House, Westcott Road, Dorking, Surrey RH4 3NB 01306 882 098 (T) info-uk@bega.com		
55 921K4			
SOURCE/LAMP DATA:			
Rated luminous flux (in lm)	340	Rated input power (in W)	4.5
Correlated Colour Temperature (CCT in K)	4000K	Luminaire efficacy (in lm/W)	77.8
Colour	Graphite	Rated Colour Rendering Index (CRI)	80
Rated life	50,000hrs	UGRL	-
Cable Length & Cable CSA in mm² & Type	2,5mm²	MacAdam Step	-
Connector		IP Rating	IP65
Dimensions (mm)	As above	Weight	0.25KG
Control	Remote non dimmable power supply unit	Dimmable	N/A



Rev	Date	Description	By	Chk
-----	------	-------------	----	-----



Client
Demar BVI Ltd.

Project
hub by Premier Inn
115-119 Camden High Street London

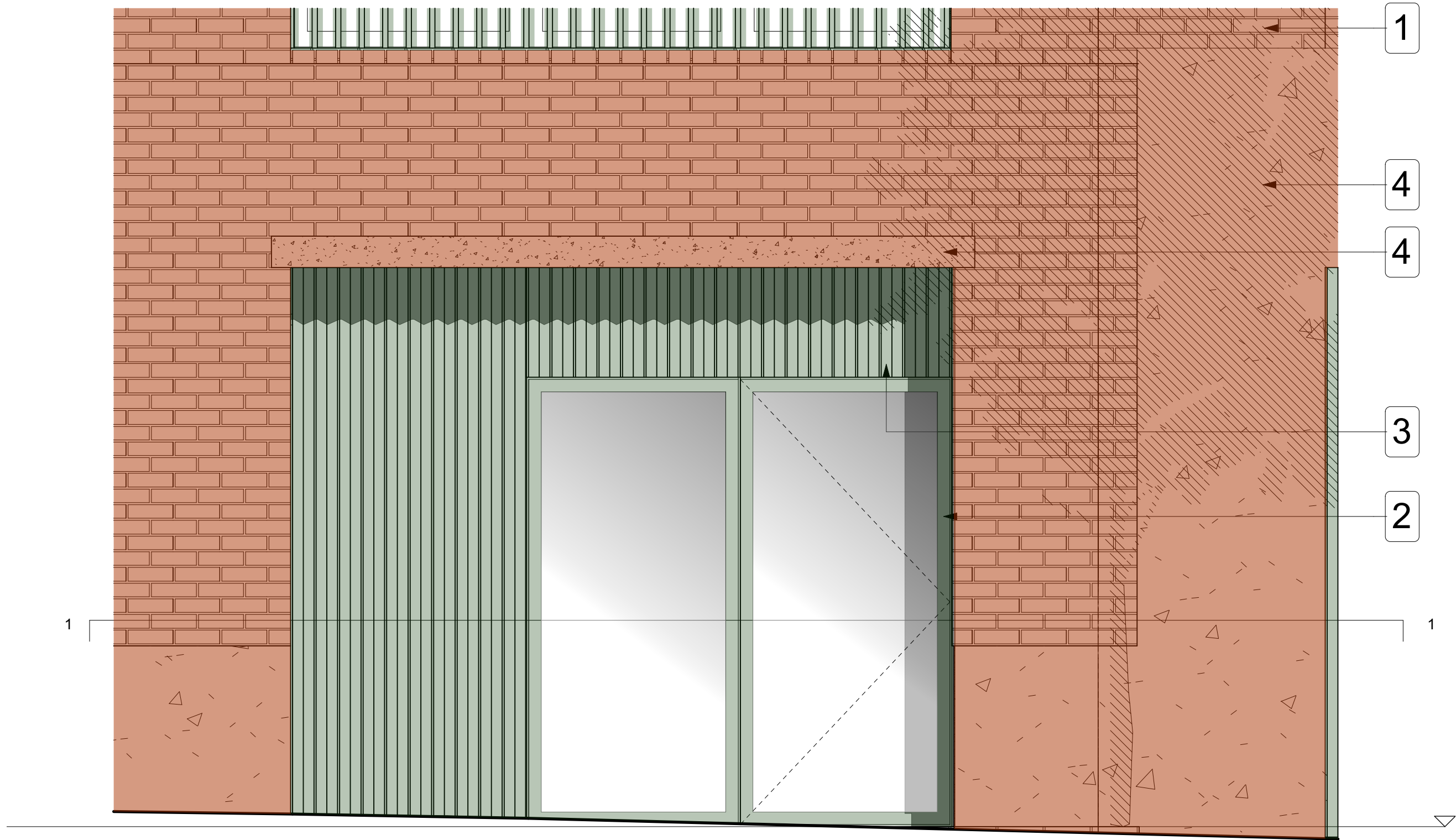
Drawing

Hotel Entrance

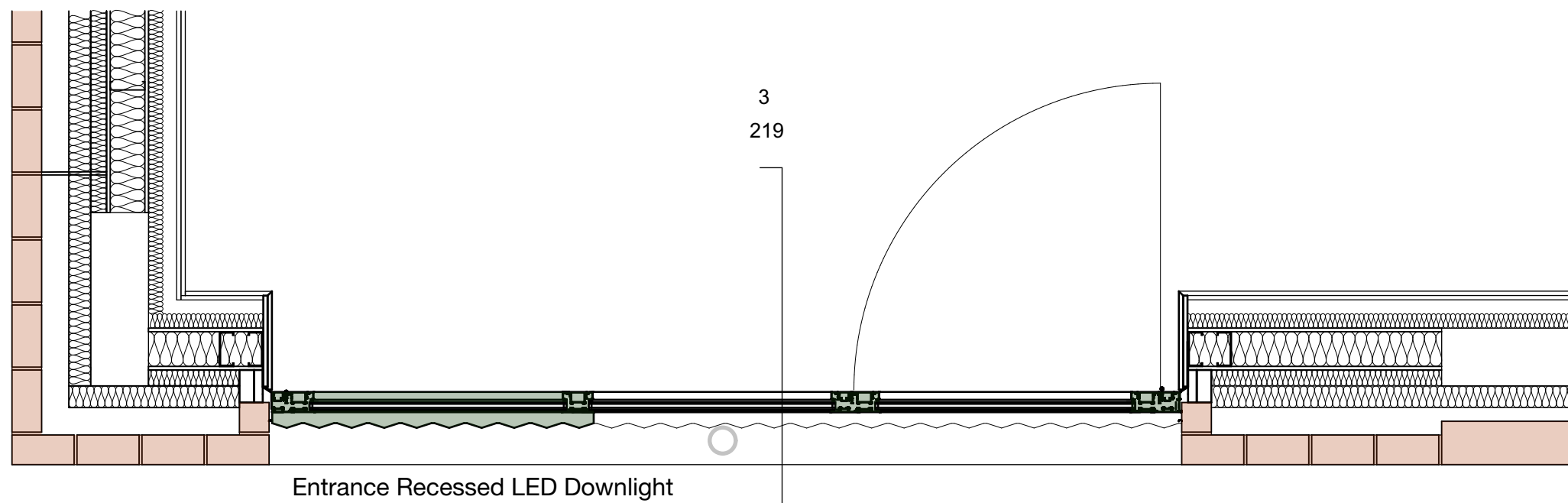
Scale	Status	Date	Drawn	Checked
1:20	CONDITION 3	24/06/21	AM	
Drawing No.				Revision

4603-PL-218

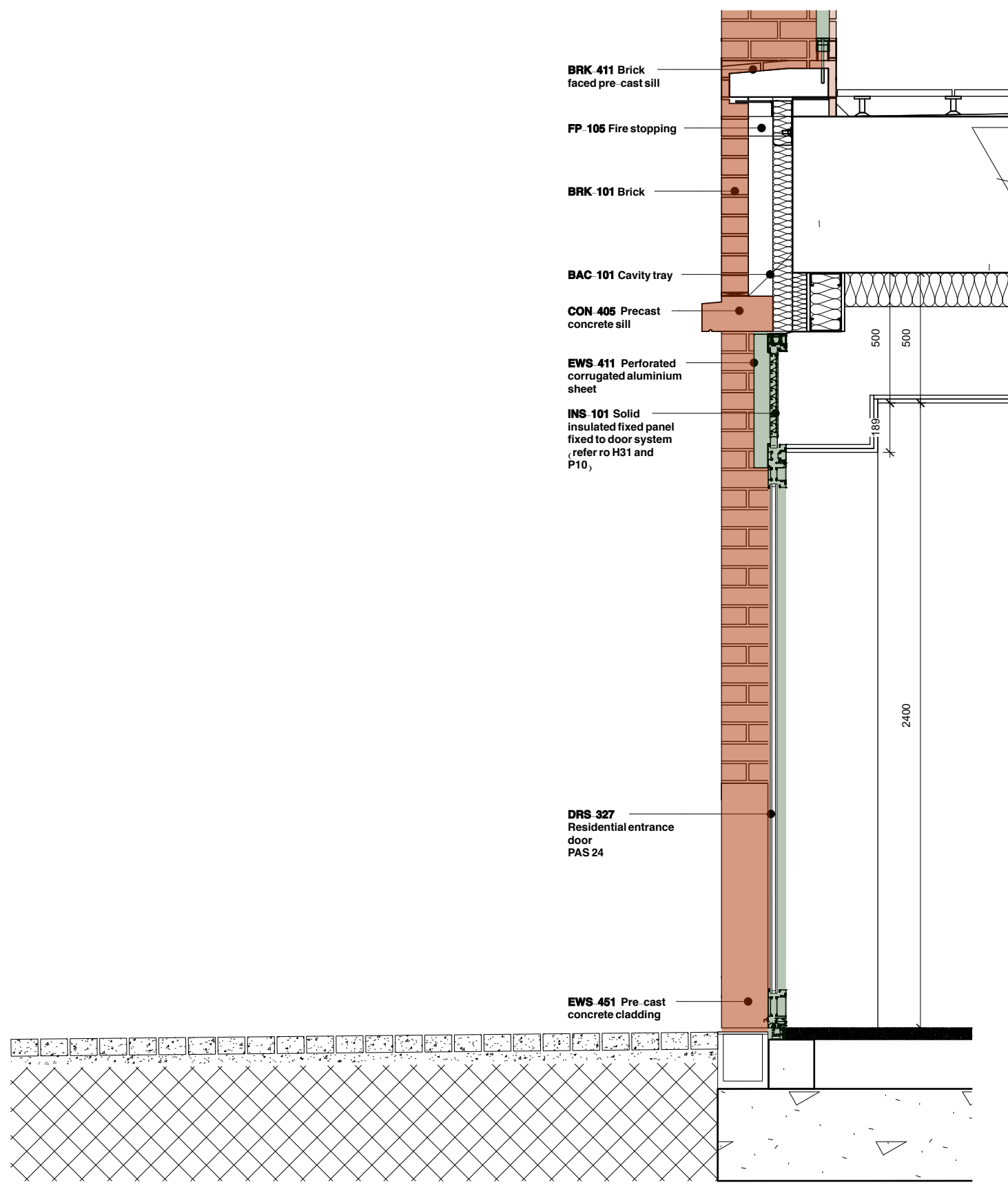
This drawing is the copyright of Axiom Architects. The contractor is to check all site dimensions and levels before work starts. This drawing must be read with and checked against all structural and other specialist drawings, specification and bills of quantities. Notify architect of any discrepancies. The contractor is to comply with all current British Standards and Building Regulations whether or not specifically stated on these drawings. **Do not scale** from drawings.



2
219
RESIDENTIAL ENTRANCE ELEVATION
1 : 20

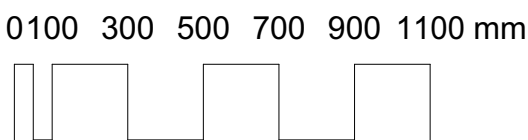


1
219
CUT AA THROUGH RESIDENTIAL ENTRANCE
1:20

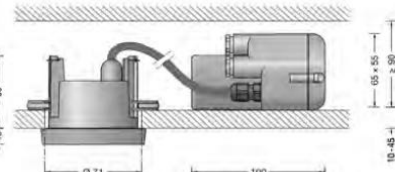




3
219
SECTION 1 THROUGH ENTRANCE
1:20

- 1 Brickwork by Wienerberger - Warnham Red Stock laid in stretcher bond with flush mortar joints.
- 2 Aluminium powder coated with a green hue for window frames, doors and balustrades.
- 3 'Zig-zag' aluminium powder coated with a green hue. Elements perforated above windows for ventilation purposes and solid when used for decorative purposes on the ground floor and residential unit.
- 4 Pigmented reconstituted stone with a consistent aggregate type and size range. The Colour matched with the brick.
- 5 Pigmented reconstituted stone, hue to match ground floor pre-cast and fluted texture to reflect 'zig-zag' panels.



PSH.

LUMINAIRE REFERENCE			
LUMINAIRE LOCATION:	Canopy	A5	
MOUNTING METHOD	Recessed		
CEILING TYPE	Plasterboard		
DESCRIPTION	Recessed LED luminaire with a remote non-dimmable power supply unit, luminaire made of aluminium alloy, clear safety glass. Protection glass IP65.		
Recessed LED Downlight			
ILLUSTRATION, DETAILS, PHOTOMETRIC DATA, ACCESSORIES			
Half beam angle 28°			
<div></div>			
MANUFACTURER:			
Bega	Contact Details		
Manufacturer Reference	Bega Lighting UK Ltd Suite 9, Milton Heath House, Westcott Road, Dorking, Surrey RH4 3NB 01306 862 099 (T) info-uk@bega.com		
55 921K4			
SOURCE/LAMP DATA:			
Rated luminous flux (in lm)	340	Rated input power (in W)	4.5
Correlated Colour Temperature (CCT in K)	4000K	Luminaire efficacy (in lm/W)	77.8
Colour	Graphite	Rated Colour Rendering Index (CRI)	80
Rated life	50,000hrs	UGRL	-
Cable Length & Cable CSA in mm² & Type	2.5mm²	MacAdam Step	-
Connector		IP Rating	IP65
Dimensions (mm)	As above	Weight	0.25KG
Control	Remote non dimmable power supply unit	Dimmable	N/A

Rev	Date	Description	By	Chk
-----	------	-------------	----	-----

AXIOM ARCHITECTS
1 Brooklands Yard Southover High Street Lewes East Sussex BN7 1HU
Tel. 01273 479434 www.axiomarchitects.co.uk

Client
Demar BVI Ltd.

Project
hub by Premier Inn
115-119 Camden High Street London

Drawing
Residential Entrance

Scale	Status	Date	Drawn	Checked
1:20	CONDITION 3	24/06/21	AM	
Drawing No.		Revision		

4603-PL-219