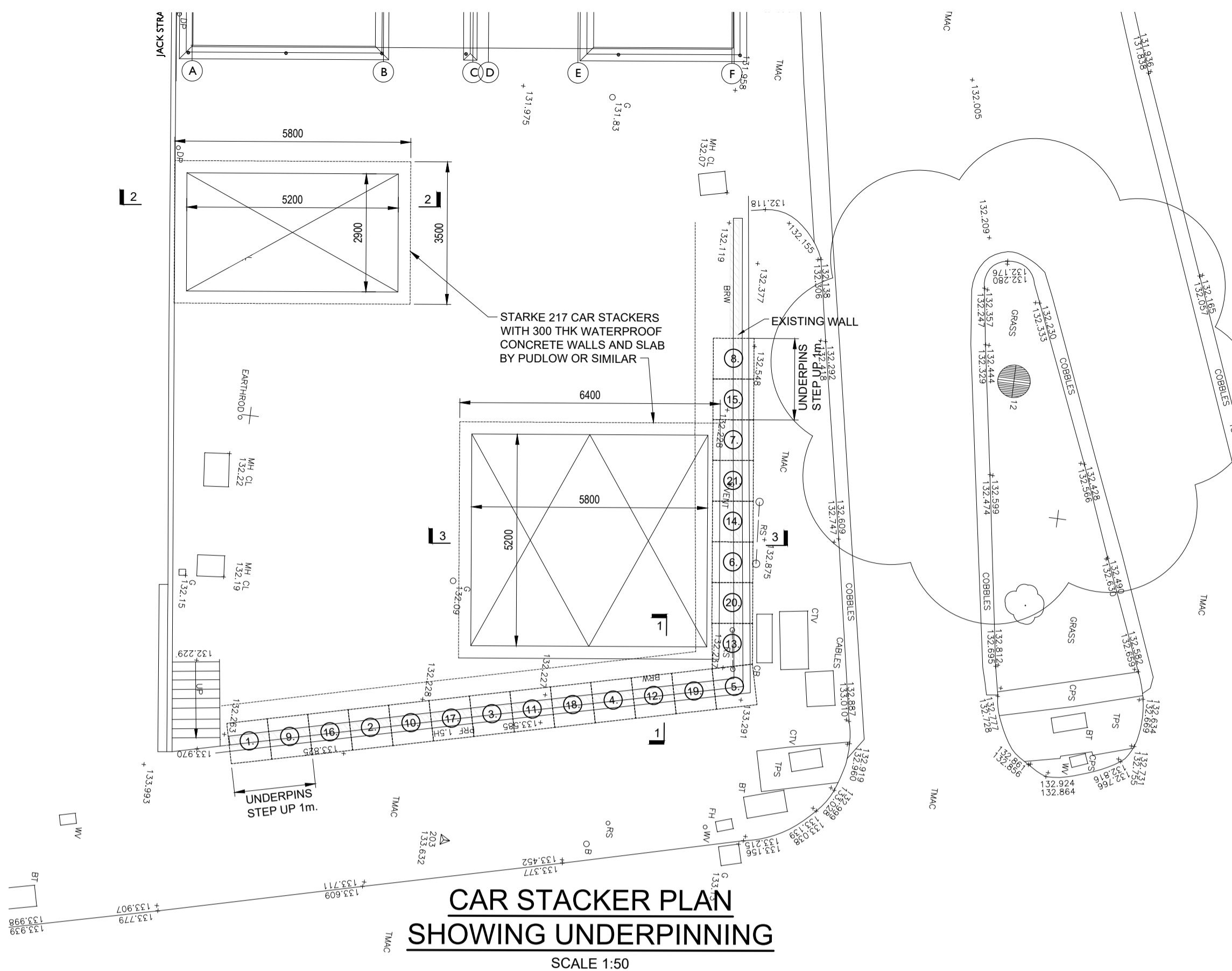
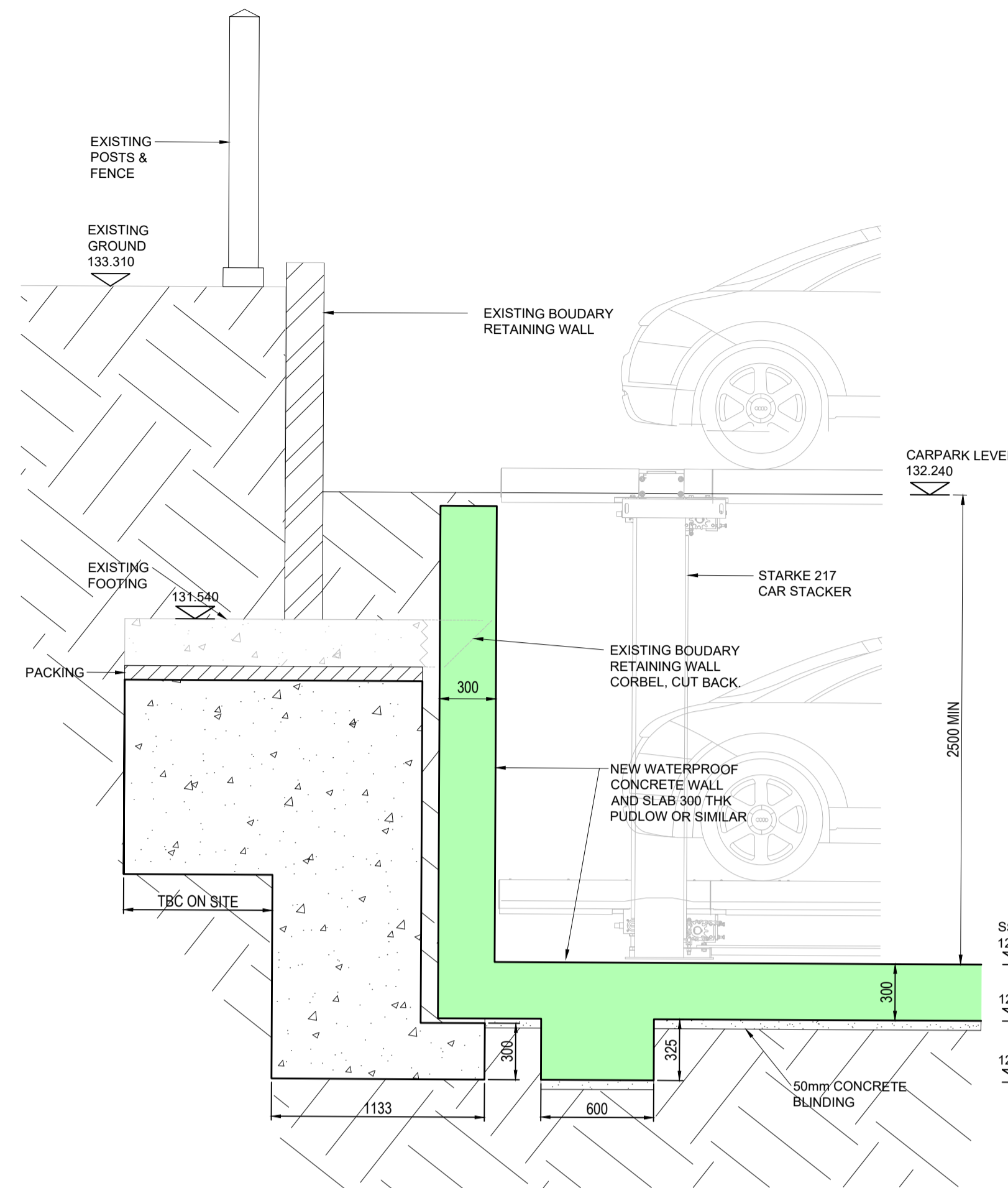


GENERAL NOTES:-

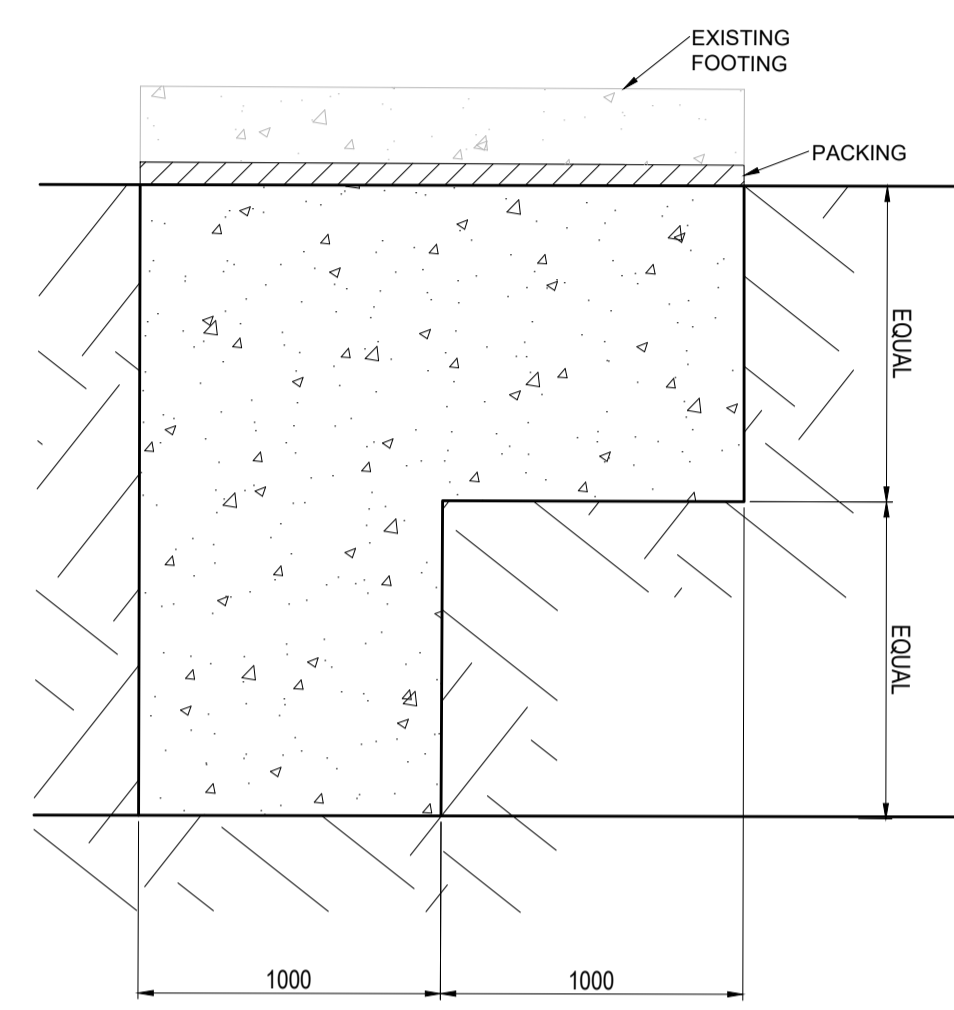
1. THIS DRAWING IS TO BE READ IN CONJUNCTION WITH ALL RELEVANT ARCHITECT'S & ENGINEER'S DRAWINGS, SPECIFICATIONS AND GROUND INVESTIGATION REPORT.
2. SETTING OUT DIMENSIONS TO BE CHECKED BY CONTRACTOR AGAINST ARCHITECT'S DRAWINGS PRIOR TO COMMENCEMENT ON SITE.
3. CONCRETE GRADE TO BE C40 MECHANICALLY VIBRATED.
4. BASEMENT SLAB REINFORCEMENT TO BE 35 KG/m²
5. GROUND BEAM REINFORCEMENT TO BE 150 KG/m³
6. WALL REINFORCEMENT TO BE 175 KG/M³



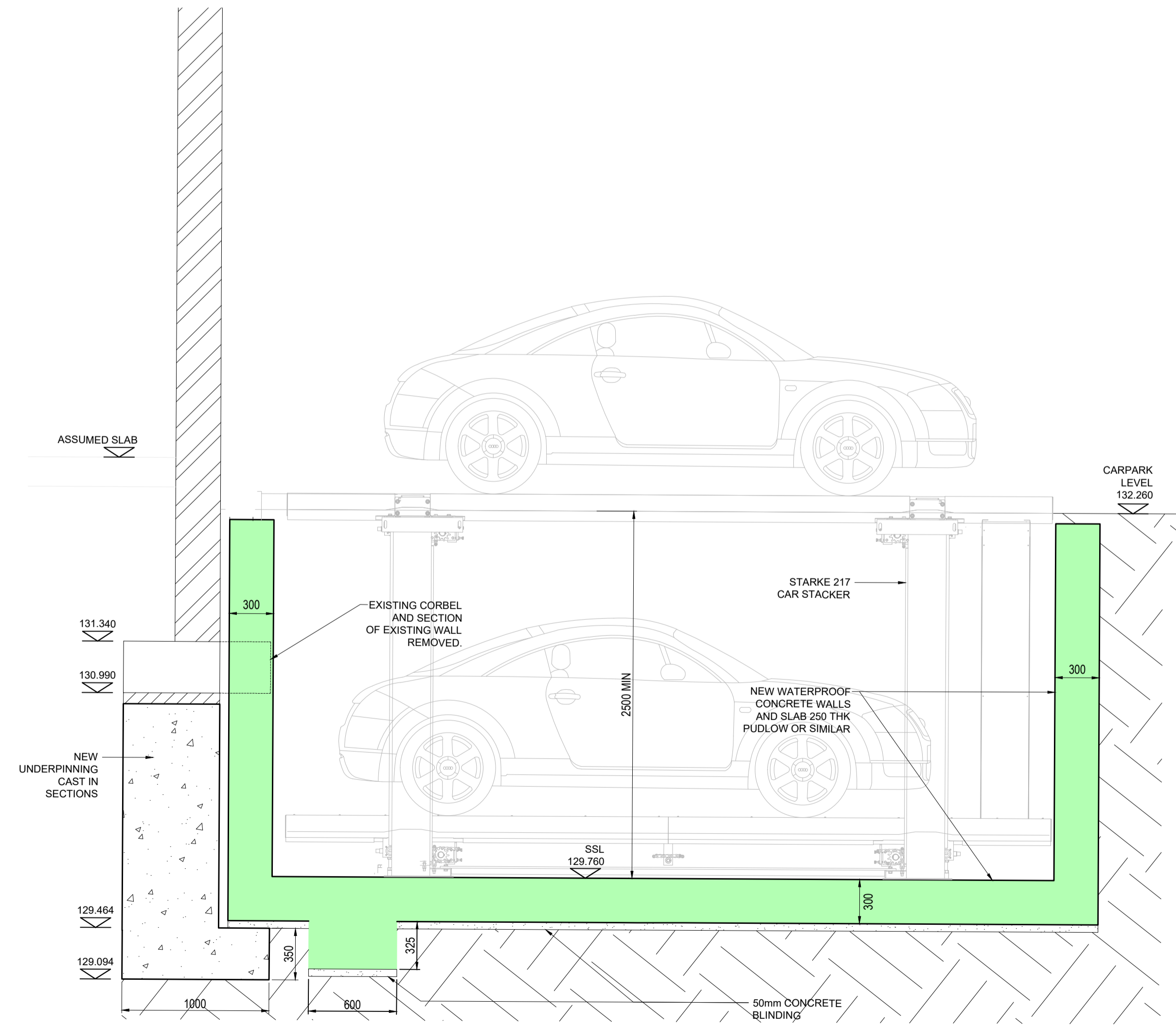
**CAR STACKER PLAN
SHOWING UNDERPINNING**
SCALE 1:50



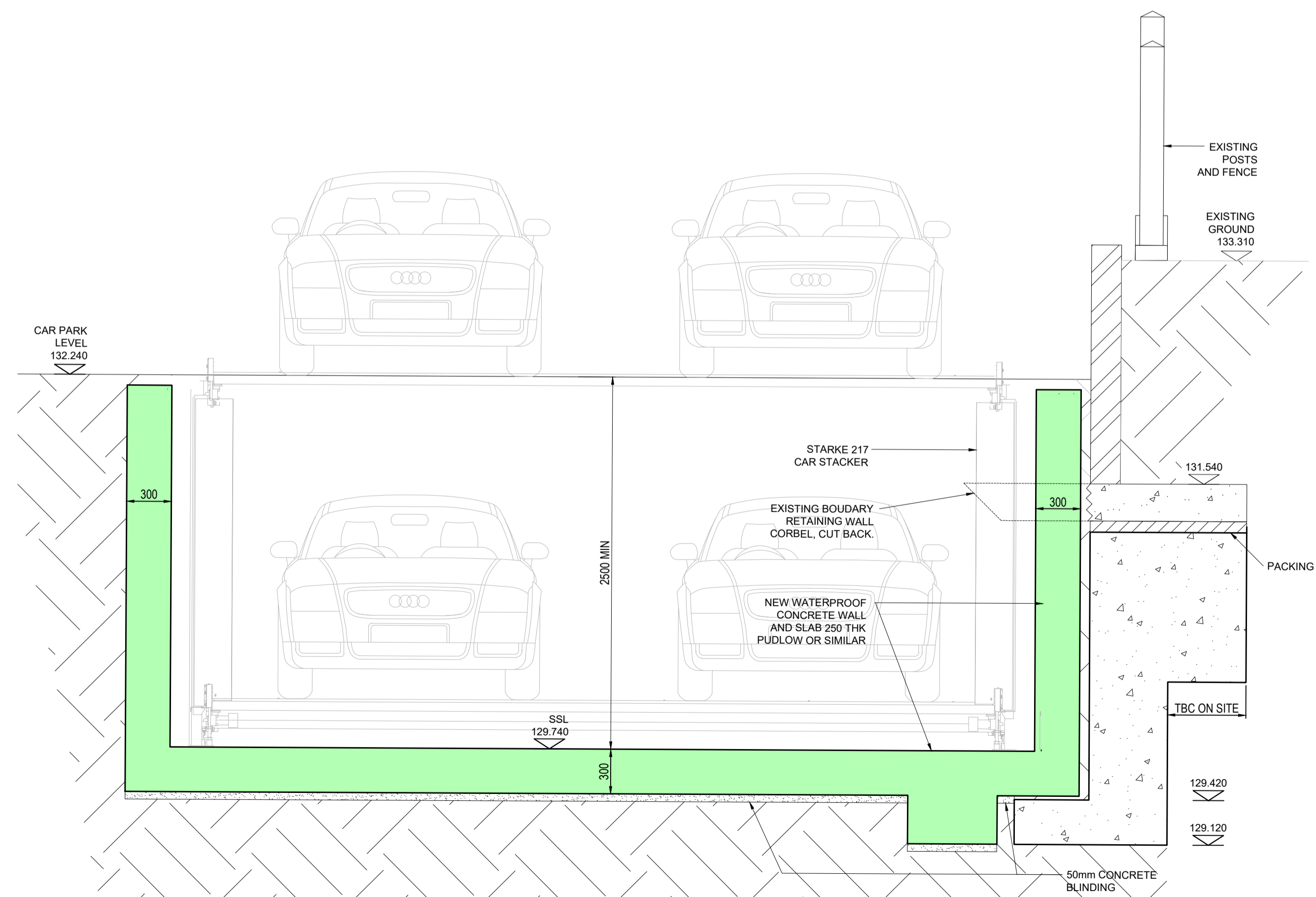
SECTION 1-1
SCALE 1:25



**TYPICAL UNDERPINNING
STEP UP DETAIL**
SCALE 1:25



SECTION 2-2
SCALE 1:25



SECTION 3-3
SCALE 1:25

T2	SCHEME CHANGED TO ORIGINAL STACKERS.	12.11.2021
T1	TENDER ISSUE	03.11.2021
P1	PRELIMINARY ISSUE	22.10.2021
Rev.	Description.	Date.

HORWITZ ASSOCIATES
Civil & Structural Engineering Consultants
Tel: 01245 809510 Web: www.rhorwitz.co.uk Email: rhh@rhorwitz.co.uk

**JACK STRAWS CASTLE
CAR PARK DEVELOPMENT**

**CAR PARK LAYOUT & CAR
STACKER DETAILS**

Scale	1:50, 1:25 @ A1	Date	OCTOBER 2021
Engineer	R.R	Drawn	A.J. Checked R.R
Client		DRG No.	REV.

ALBANY HOMES LTD 8149-F-01 T2