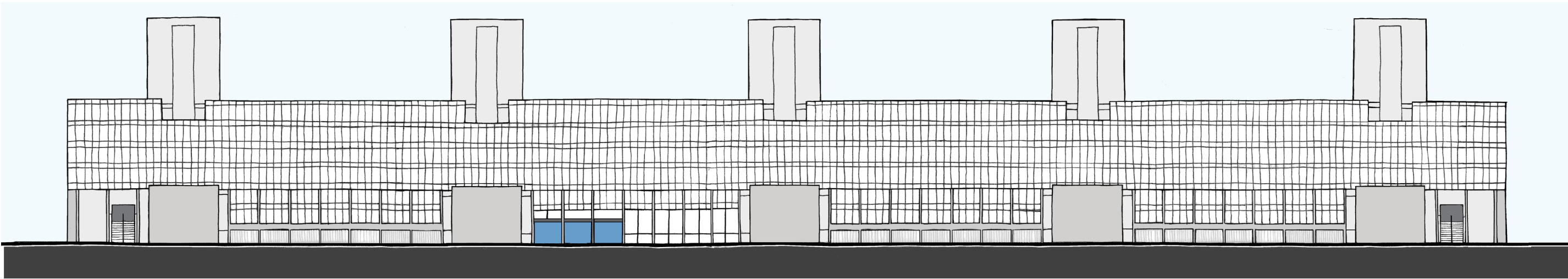
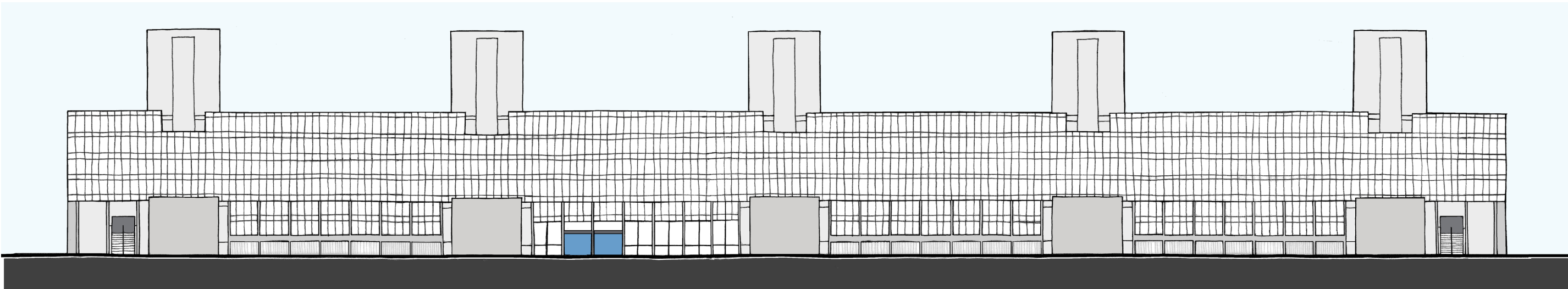


4.2 Design Development

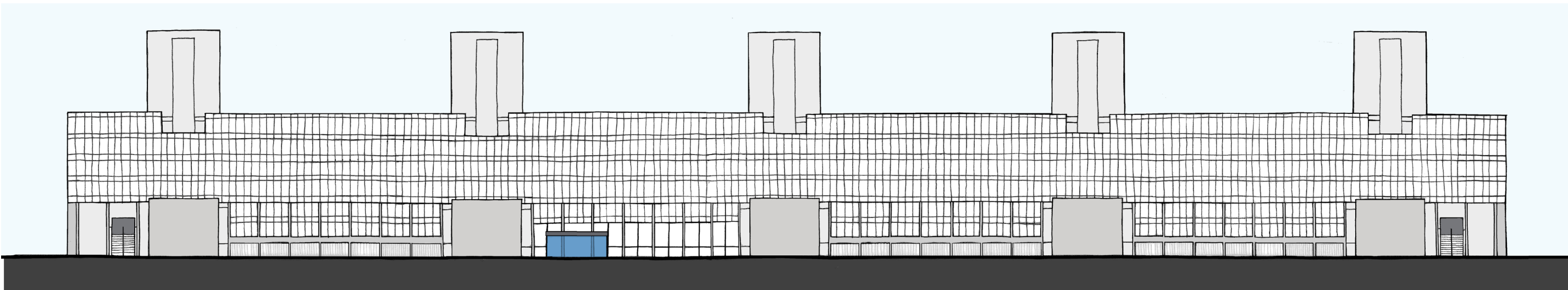
4.2.3 Bedford Way Entrance Massing



Massing Study 1- Pavilion as an extension of the level 3 atrium, sitting within 3 concrete piers.



Massing Study 2 - Pavilion as an extension of the level 3 atrium, sitting within 2 concrete piers. Proportions sit comfortably in relation to the projecting concrete studios.



Massing Study 3 - Pavilion as an extension of the level 3 atrium, centred on the atrium space, with concrete piers passing through pavilion. Proportions sit comfortably in relation to the projecting concrete studio spaces. However, the architectural expression and rhythm of the concrete piers is lost within the pavilion.