

4.1 Design Overview

Phase 2 Key Design Priorities

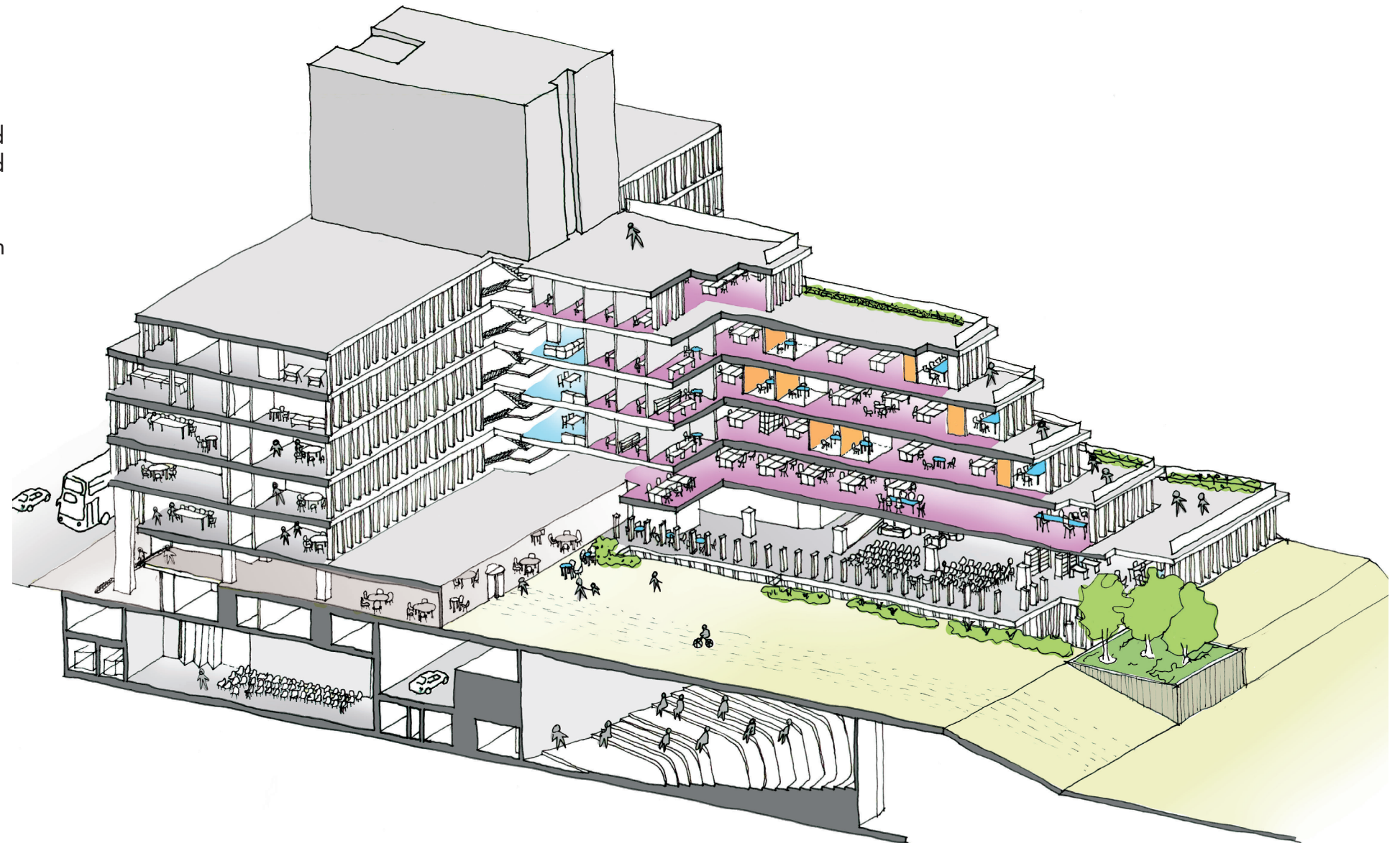
The following key design priorities have been developed for the Phase 2 proposals:

Application 2A and 2B Priorities

- Building infrastructure upgraded to provide a comfortable environment to refurbished areas, allowing for future upgrades
- Remediation of asbestos in the proposed works areas
- Upgraded and increased sanitary facilities, all upgraded and refitted to contemporary standards
- Replanning of existing layouts to improve efficiency of space and provide quality workspace that supports the changing needs and range of activities undertaken by UCL IOE staff
- Allow for growth of staff and students numbers
- Creating shared social and common space to support a research culture

Application 2C Priorities

- Reinforce the original grand arrival and showcase UCL IOE as a leading education institution and create a sense of community
- Improve wayfinding and accessibility for building users and visitors
- Improve safety and security
- Upgrade of existing Fire Alarm systems throughout the building to improve building safety and evacuation.



Drawing - Cut-away axonometric of 20 Bedford Way

4.1 Design Overview

Entrance Halls Key Design Strategies

Building on the Phase 2 priorities, the following key design strategies have been developed for the entrance halls:

Architectural Experience

Reinstate the once grand arrival sequence through the atrium staircase and revitalise the architectural experience of the atrium and entrance halls.

Within the entrance foyer, carefully removing modern finishes and installing lighting and finishes in keeping with the original design.

A clear entrance

A clear, and visible, entrance from Bedford Way, with a new entrance pavilion which projects beyond the concrete piers, signifying the entrance to the IOE, and reinstating the vision of Lasduns original design.

Accessibility

To create an inclusive, accessible building that welcomes all users and provides equal access for all.

Security and safety for all

Improved safety and security through a reduction in the number of building entrances, re-planned with secure lines and reception areas to create a secure and welcoming environment.

Showcase the IOE

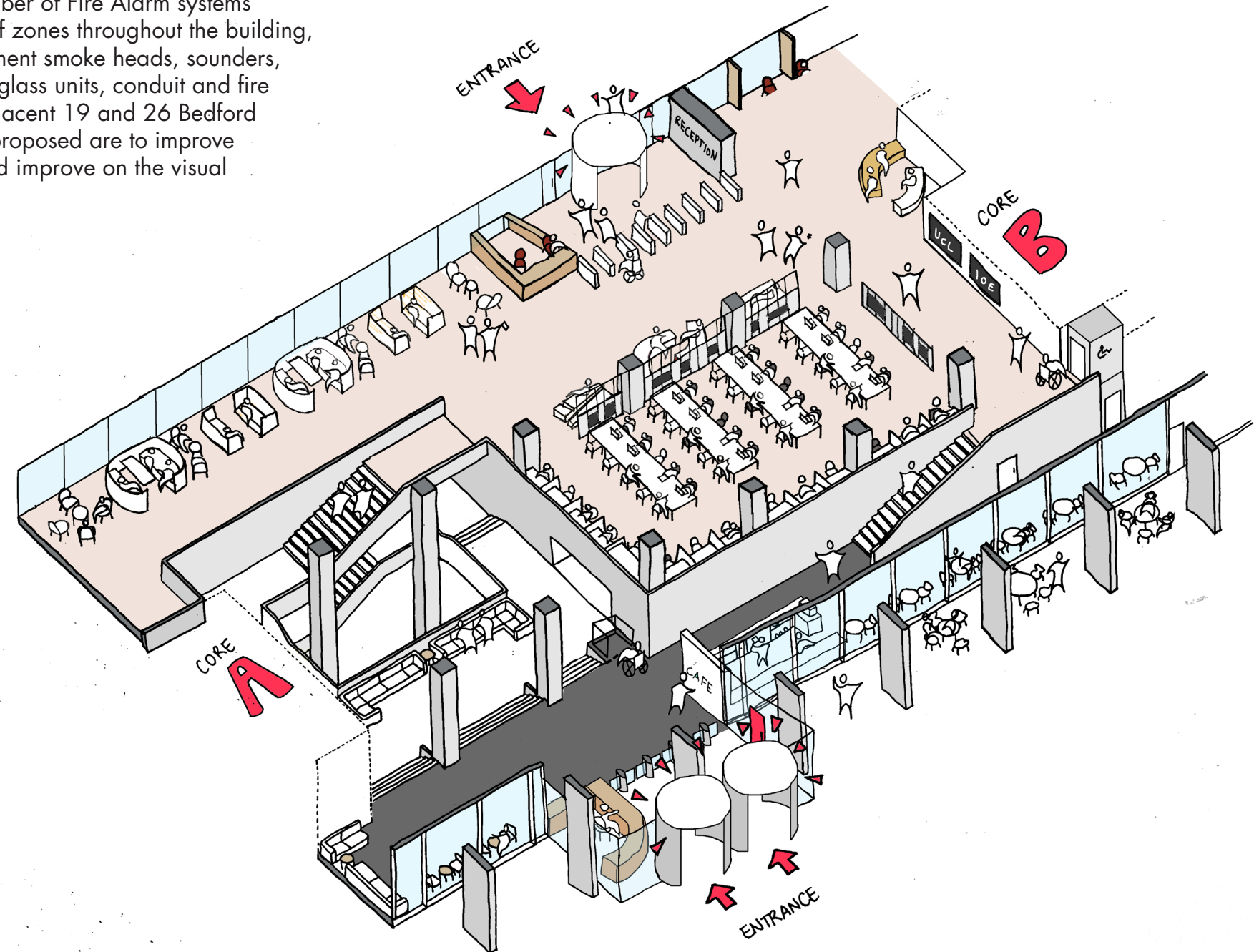
To showcase UCL IOE as a leading education institution, using the entrance halls to display and exhibit the work of the IOE.

Workspace

Re-planning of existing layouts to improve efficiency of space and provide quality workspace that supports the changing needs and range of activities undertaken by UCL IOE staff. Creating shared social and common space to support a research culture.

Fire Alarm Works

Upgrade of a number of Fire Alarm systems within a number of zones throughout the building, including replacement smoke heads, sounders, emergency break glass units, conduit and fire doorsets to the adjacent 19 and 26 Bedford Way. The works proposed are to improve building safety and improve on the visual



Design development sketch showing Levels 3 and 4