

Swiss Cottage Library Decarbonisation Works

Window Schedule

Camden Council

24 November 2021

Notice

This document and its contents have been prepared and are intended solely as information for Camden Council and use in relation to the replacement window works which are being undertaken as part of the wider decarbonisation project works.

Atkins Limited assumes no responsibility to any other party in respect of or arising out of or in connection with this document and/or its contents.

This document has 12 pages including the cover.

Document history

Document title: Window Schedule

Revision	Purpose description	Originated	Checked	Reviewed	Authorised	Date
1.0	For Planning	JH	RJ	RJ	JMcS	24.11.21
2.0	For Planning	JH	RJ	RJ	JMcS	01.12.21

Client signoff

Client	Camden Council
Project	Swiss Cottage Library Decarbonisation Works
Job number	5206133
Client signature/date	

Contents

Chapter	Page
Introduction	4
Appendices	5
Appendix A. Images of Building Elevations	6
Appendix B. Photo Schedule Showing Existing Window Types	7
Appendix C. Window Schedule	8
Appendix D. Existing and Proposed Elevations (Colour)	9
Appendix E. Manufacturer's Information (Proposed Windows and Door)	10
Appendix F. Window Colour Choice Information (Proposed)	11

Introduction

The information contained within this report is to supplement the current planning application no. 21/2/07865 for the decarbonisation works at Swiss Cottage Library, 88 Avenue Road, London, NW3 3HA.

Appendices

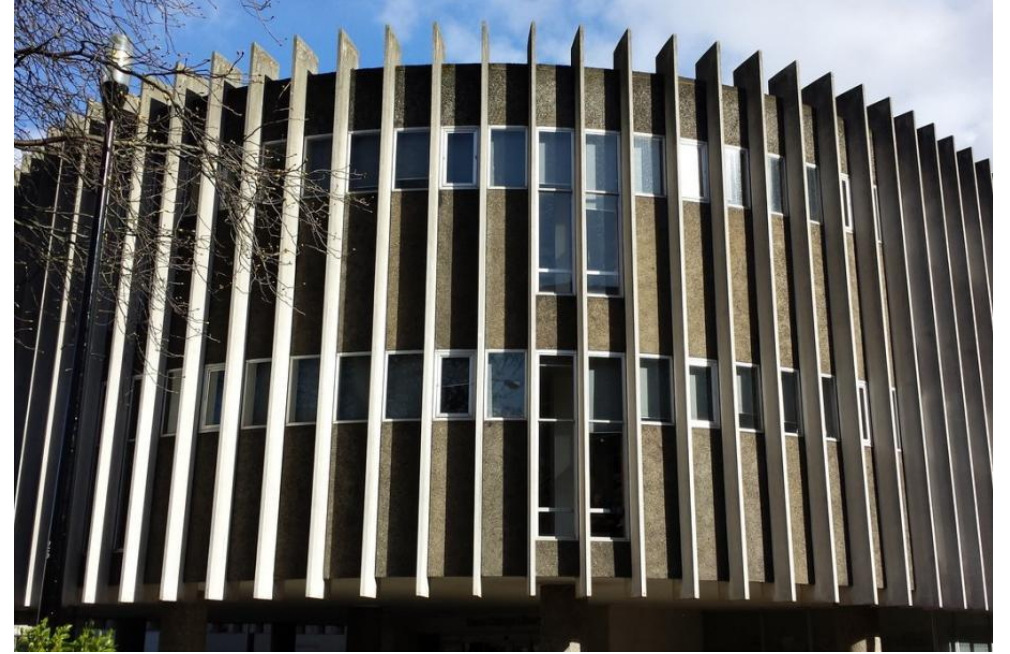


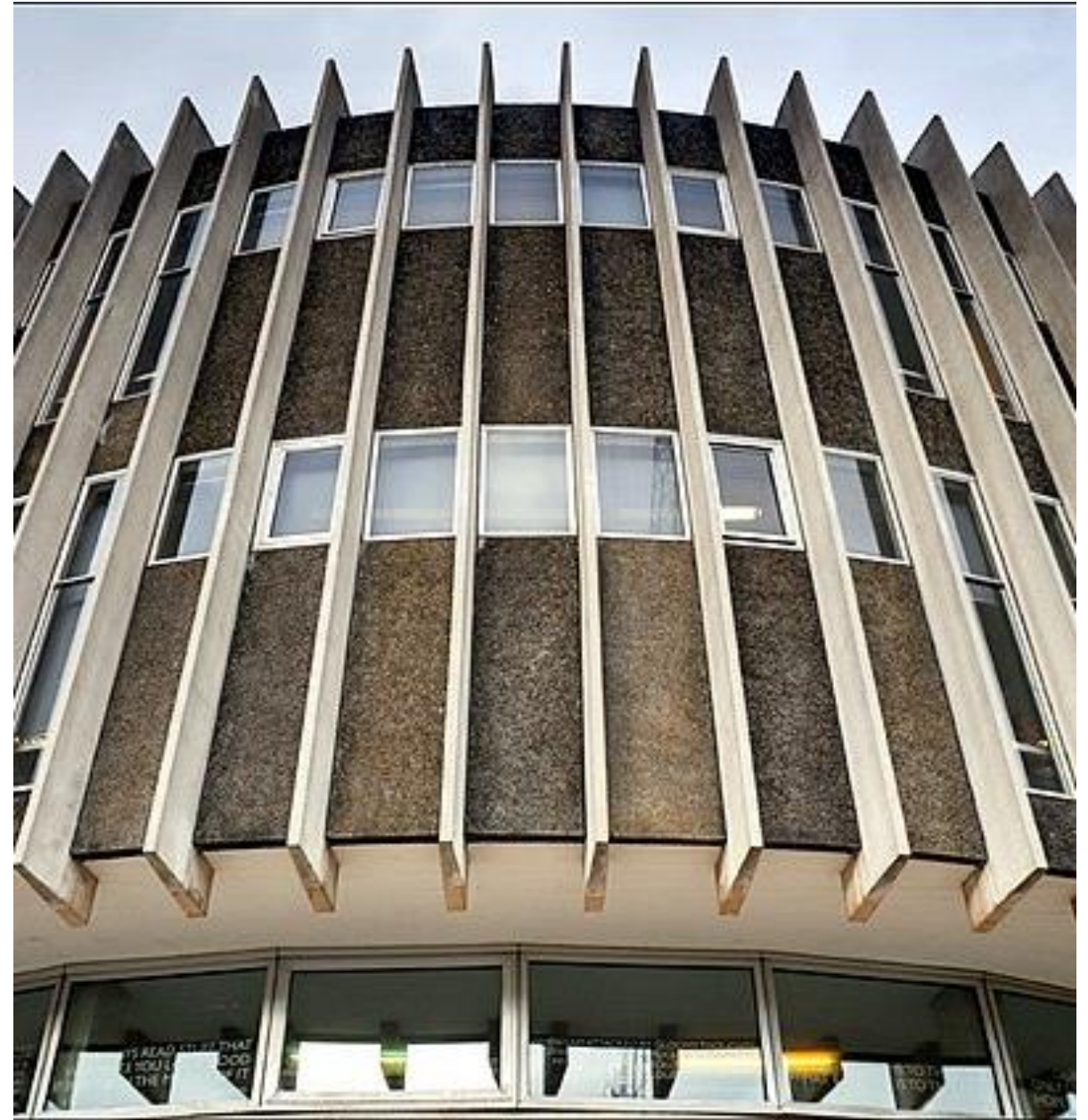
Appendix A. Images of Building Elevations











Appendix B. Photo Schedule Showing Existing Window Types



A1 - Fixed (1)



A1 - Fixed (2)



A2 - Centre Pivot (1)



A2 - Centre Pivot (2)



A3 - Slides (1)



A3 - Slides (2)



A3 - Slides (3)



B2 - Fixed (1)



B2 - Fixed (2)



B2 - Fixed (3)



B2 - Slides (1)



B2 - Slides (2)



B2 - Slides (3)



B2 - Slides (4)



E1 - Fixed (1)



E1 - Fixed (2)



E2 - Centre Pivot (1)



E2 - Centre Pivot (2)



E3.5 - Fixed / Openable (1)



E4 - Openable (1)



E4 - Openable (2)



E4 - Openable (3)



E4 - Openable (4)



F1 - Fixed (1)



F1 - Fixed (2)



F1 - Fixed (3)



F1 - Fixed (4)



**F2 - Top Part Centre Pivot
(1)**



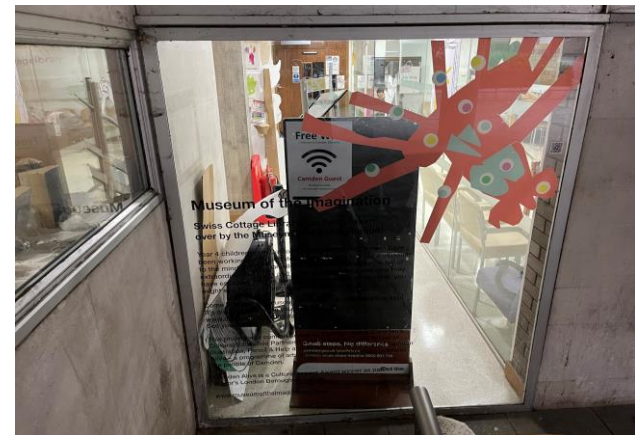
**F2 - Top Part Centre Pivot
(2)**



**F2 - Top Part Centre Pivot
(3)**



**F2 - Top Part Centre Pivot
(4)**



G1 - Fixed (1)



G1 - Fixed (2)



G1 - Fixed (3)



G1 - Fixed (4)



H1 - Fixed (1)



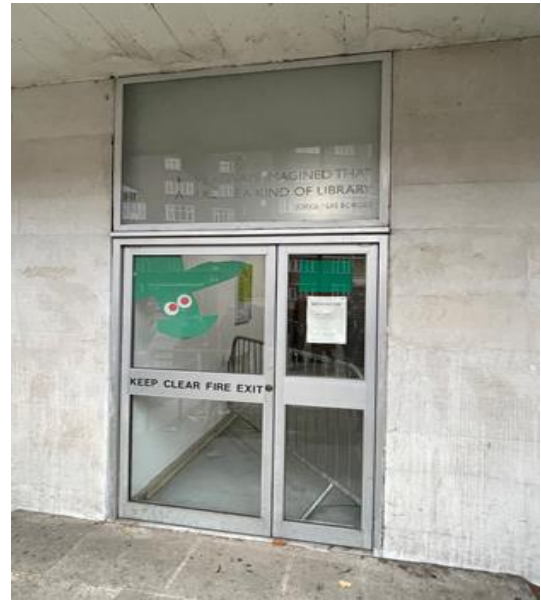
H1 - Fixed (2)



H1 - Fixed (3)



H1 - Fixed (4)



Type A - Door (1)



Type A - Door (2)



Type A - Door (3)



Type A - Door (4)

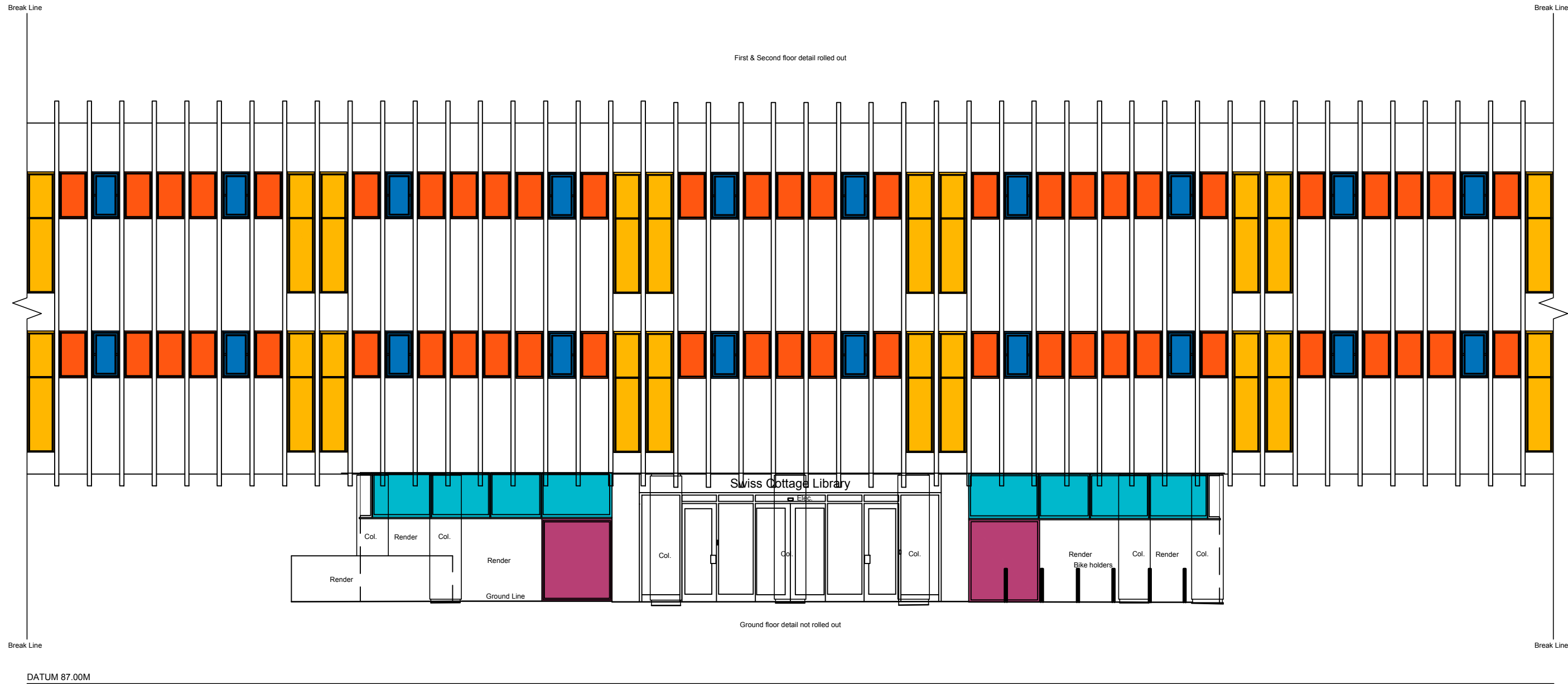
Appendix C. Window Schedule

Existing						Proposed			
Window	Type	Location	Number	Status		Window	Type	Location	Number
A1	Fixed	FF/SF	236	Considered original		A1	Fixed	FF/SF	329
A2	Centre Pivot	FF/SF	94	Considered original		A2	Openable / Top Hung	FF/SF	1
A3	Slides	FF/SF	2	Considered original		A3	Openable / Top Hung	FF/SF	2
B2	Slides	FF/SF	104	Considered original		B1	Openable / Top Hung	FF	1
B2	Fixed	FF/SF	12	Considered original		B2	Fixed	FF/SF	115
E1	Fixed	GF	58	Considered original		E1	Fixed	GF	77
E2	Openable	GF	12	Considered original		E2	Openable / Top Hung	GF	4
E3.5	Fixed/Openable	GF	4	Considered original		E3.5	Fixed/Openable	GF	4
E4	Openable	GF	12	Replacement		E4	Openable / Top Hung	GF	1
F1	Fixed	FF	15	Considered original		F1	Fixed	FF	19
F2	Top part centre pivot	FF	5	Considered original		F2	Openable / Top Hung	FF	1
G1	Fixed	GF	2	Considered original		G1	Fixed	GF	2
H1	Fixed	GF	2	Considered original		H1	Fixed	GF	2
Door A	Openable	GF	1	Considered original		Door A	Openable	GF	1
			Total: 559						Total: 559

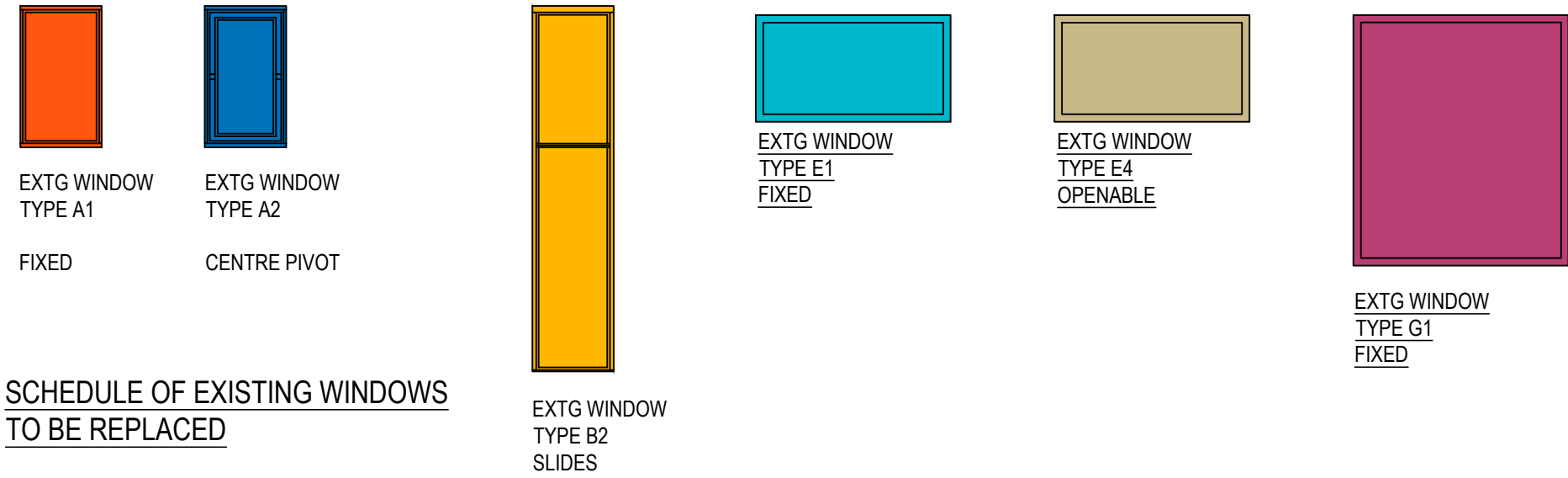
Appendix D. Existing and Proposed Elevations (Colour)

Existing and proposed window types have been shown in different colours.

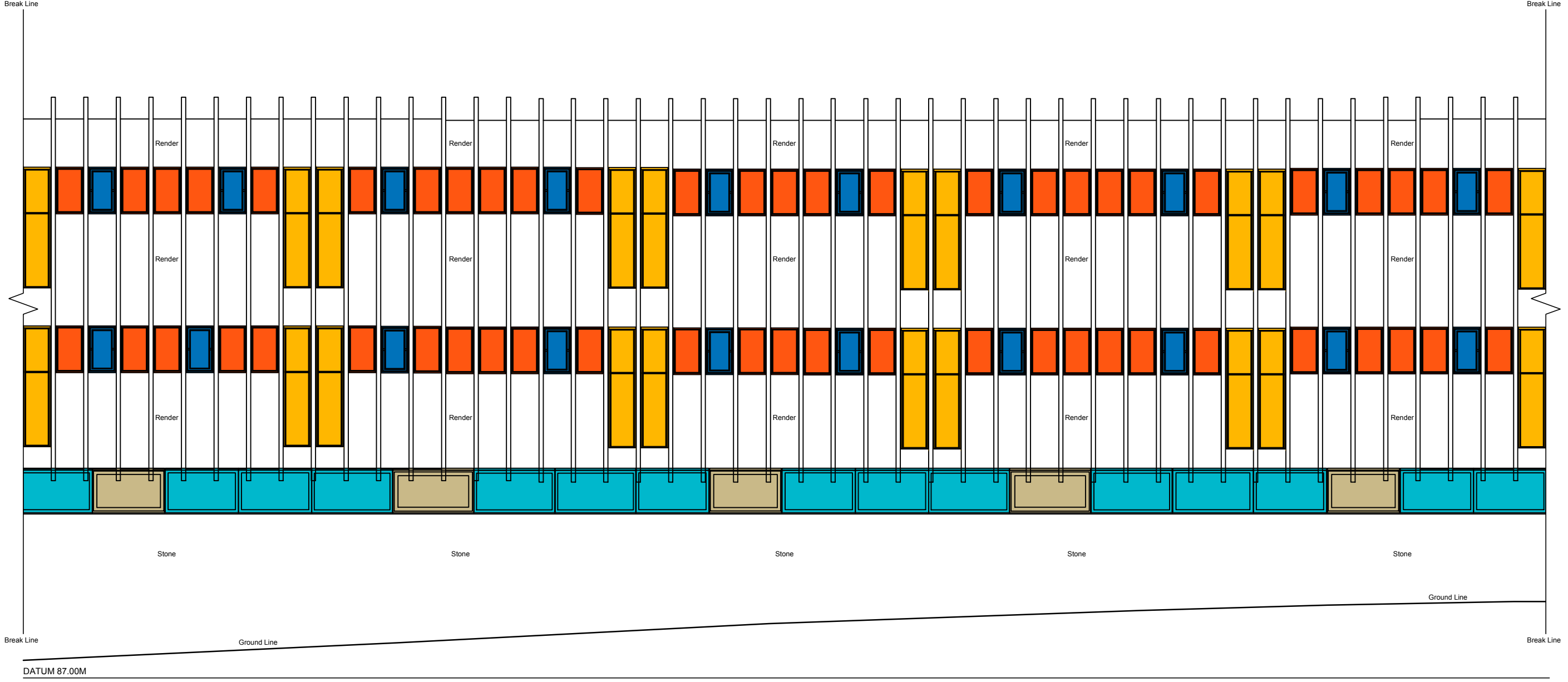
100
0 10
Millimetres



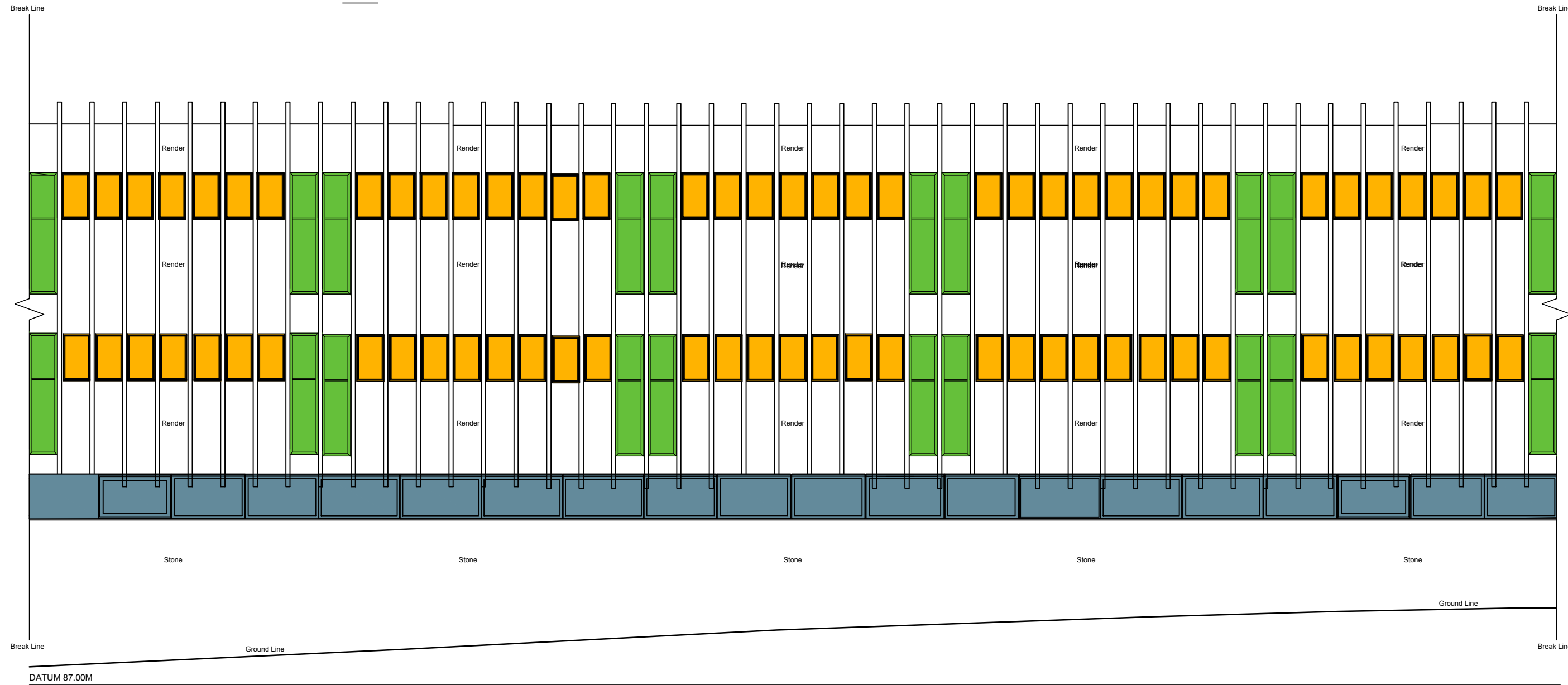
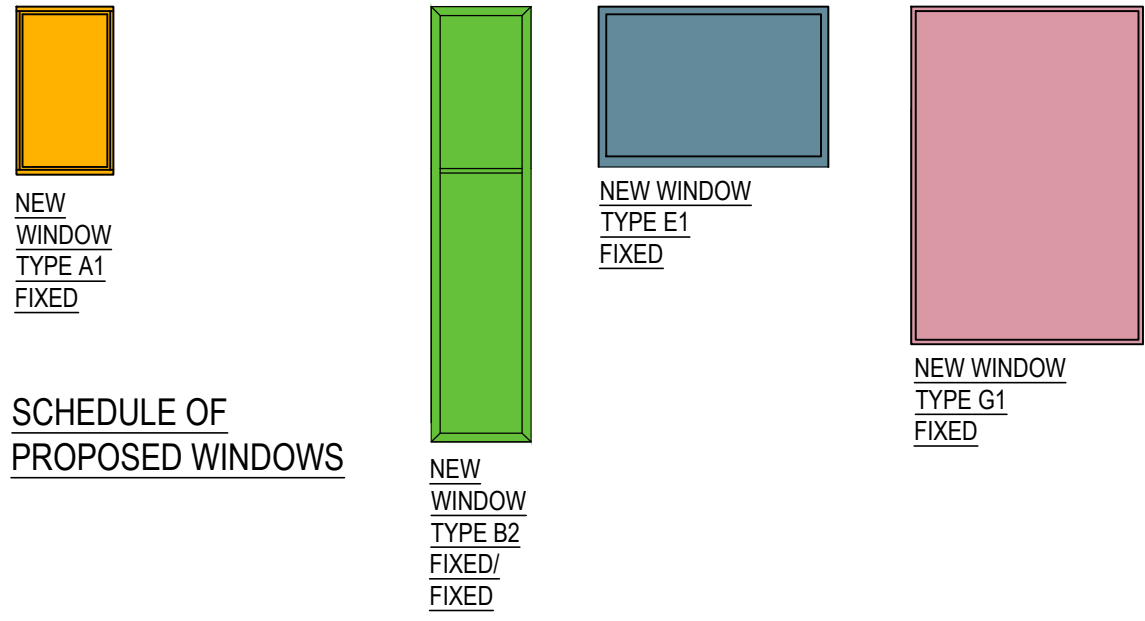
EXISTING NORTH ELEVATION



PROPOSED NORTH ELEVATION



EXISTING SOUTH ELEVATION

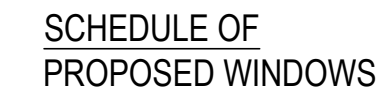
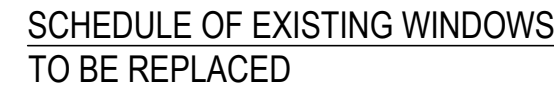


PROPOSED SOUTH ELEVATION

SAFETY, HEALTH AND ENVIRONMENTAL INFORMATION						Drawing Status		Suitability		Project Title									
In addition to the hazards/risks normally associated with the types of work detailed on this drawing, note the following:						PLANNING ISSUE		SO		SWISS COTTAGE LIBRARY SALIX CARBON NET ZERO WORKS									
CONSTRUCTION						ATKINS		London, Nova North 11 Bressenden Place Westminster, London England SW1E 5BY Tel: +44 (0)20 7121 2000 Fax: +44 (0) www.atkinsglobal.com		Drawing Title									
MAINTENANCE/CLEANING						Copyright © Atkins Limited (2013)		www.atkinsglobal.com		NORTH & SOUTH ELEVATIONS SHOWING WINDOWS TO BE REPLACED									
DECOMMISSIONING/DEMOLITION						Client		LONDON BOROUGH OF CAMDEN		Scale		Designed		Drawn		Checked		Authorised	
It is assumed that all works will be carried out by a competent contractor working, where appropriate, to an approved method statement						P2		29.11.2021		Revisions to Proposed Window types and Styles		JEL		JH		JH		JH	
Rev.						Date		Description		By		Chk'd		App'd		Date		Revision	
																		P 2	



DATUM 87.00M



DATUM 87 00M



SCHEDULE OF EXISTING WINDOWS & DOOR TO BE REPLACED

Window/Door Type	Specification
EXTG WINDOW TYPE A1	FIXED
EXTG WINDOW TYPE A2	CENTRE PIVOT
EXTG WINDOW TYPE A3	SLIDES
EXTG WINDOW TYPE B1	SLIDES
EXTG WINDOW TYPE B2	FIXED
NEW WINDOW TYPE E3.5	FIXED/OPENABLE SLIDER
EXTG WINDOW TYPE E1	FIXED
EXTG WINDOW TYPE E2	OPENABLE CENTRE PIVOT
EXTG WINDOW TYPE E4	OPENABLE TOP HUNG
EXTG WINDOW TYPE F1	FIXED
EXTG WINDOW TYPE F2	TOP PART CENTRE PIVOT
EXTG WINDOW TYPE H1	FIXED
EXTG DOOR TYPE A	
NEW WINDOW TYPE A1	FIXED
NEW WINDOW TYPE A2	OPENABLE
NEW WINDOW TYPE A3	OPENABLE
NEW WINDOW TYPE B1	OPENABLE/ FIXED
NEW WINDOW TYPE B2	FIXED
NEW WINDOW TYPE E1	FIXED
NEW WINDOW TYPE E2	OPENABLE
NEW WINDOW TYPE E3.5	FIXED
NEW WINDOW TYPE F1	FIXED/ FIXED
NEW WINDOW TYPE F2	OPENABLE/ FIXED
NEW WINDOW TYPE H1	FIXED
NEW DOOR TYPE A	



	SAFETY, HEALTH AND ENVIRONMENTAL INFORMATION									Drawing Status PLANNING ISSUE	Suitability SO	Project Title SWISS COTTAGE LIBRARY SALIX CARBON NET ZERO WORKS				
	In addition to the hazards/risks normally associated with the types of work detailed on this drawing, note the following:									ATKINS London, Nova North 11 Bressenden Place Westminster, London England SW1E 5BY Tel: +44 (0)20 7121 2000 Fax: +44 (0) Copyright © Atkins Limited (2013) www.atkinsglobal.com	Client LONDON BOROUGH OF CAMDEN	Drawing Title WEST ELEVATIONS SHOWING WINDOWS & DOOR TO BE REPLACED				
	CONSTRUCTION											Scale 1:100				
	MAINTENANCE/CLEANING											Designed JH				
												Drawn JEL				
												Checked JH				
	DECOMMISSIONING/DEMOLITION									Authorised JH						
										Original Size A1						
				P3	29.11.2021	Revisions to Proposed Window Types and Styles	JEL	JH	JH	Date 05-11-21						
				P2	23.11.2021	Replacement door position shown	JEL	JH	JH	Date 08-11-21						
It is assumed that all works will be carried out by a competent contractor working, where appropriate, to an approved method statement			Rev.	Date	Description	By	Chk'd	App'd	Date 18-11-21							

Appendix E. Manufacturer's Information (Proposed Windows and Door)

AA®720 Standard Casement Window

Introduction

The AA®720 Casement Window is part of the AA®720 range of Windows and Doors. In line with the existing range, the AA®720 Casement is available in a range of increasing levels of thermal performance – incorporating Kawneer’s latest Reflex unique thermal break technology.

The AA®720 Casement Windows are available as top hung or side hung windows and can be either internally or externally glazed. Additional advantages of the advanced thermal break technology include the options of dual colour finishes, to provide design flexibility in various applications.

Product Features and Benefits

- BRE Green Guide ‘A’ Rated Frame* for projects that require sustainable and environmental advantages
- Range of locking options available - for flexibility. Choose from standard Espagnolette locking to enhanced security in line with PAS 24:2016
- Option of Trickle Ventilation - can help meet the requirements of Document F
- Projected top hung or side hung or butt hinge options - total flexibility, suits most casement project applications
- Suites with the AA®720 series, AA®100/AA®110 Curtain Walling, 451PT Framing and Door Systems
- Offset handle position for side hung windows. Safety in use – suitable for ‘Lifetime Homes’ Specification
- Choice of restrictors available to 100mm. Design flexibility. Compliant with the HTM 55 regulations and BS 8213 of 100mm initial opening
- Folding Openers with Link Bars offer safety in use
- Maximum size 2300mm(W) x 2500mm(H) - suitable in even the most demanding of applications
- Suited hardware - compatible hardware to compliment the AA®720, AA®540 and AA®3720 ranges
- Outside glaze option (not PAS 24 compliant)

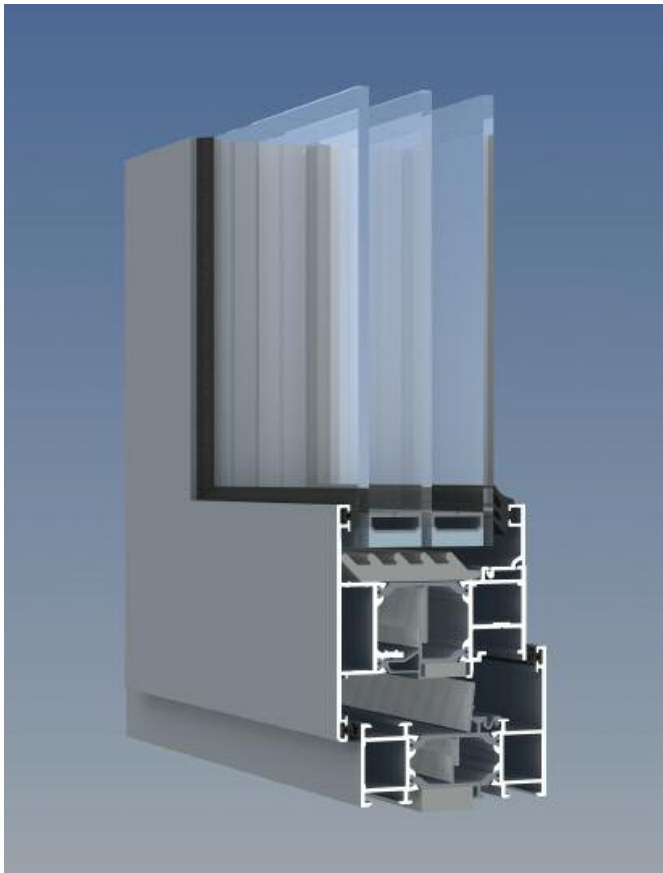
Security**

The AA®720 Casement Window has been independently tested to PAS 24:2016.

*** Does not refer to standard hardware, security hardware required.*



** Corresponds to the BRE Global Green Guide online generic specification for windows and achieves a summary rating of A for non-domestic schemes. www.thegreenguide.org.uk Element Number 1231500007*



AA®720 HI Reflex^{Plus} Casement Window

Casement Product Selector

Performance	AA®720 Casement*	AA®720 SL Casement	AA®541 Casement
Weather Performance (BS 6375)	■	■	■
Security to PAS 24:2016	■	■	■
Uw (Double Glazing)	1.5 W/m²K	1.6 W/m²K	1.8 W/m²K
Uw (Double Glazing with warm edge spacer)**	1.3 W/m²K	1.4 W/m²K	1.6 W/m²K
Uw (Triple Glazing)	1.2 W/m²K	1.2 W/m²K	1.5 W/m²K
Uw (Triple Glazing with warm edge spacer)***	1.0 W/m²K	1.1 W/m²K	1.3 W/m²K
Special Features			
BRE Green Guide Rating°	A	A	A+
Design Features			
Dual Colour Option	■	■	■
Composite Windows	■	■	■
Ribbon Windows	■	■	■
Punched Out Openings	■	■	■
Triple Glazing	■	■	■+
Infills:	upto 56mm	upto 42mm	upto 39mm
Standard Hardware Groove	■	■	■
Multi-Point / Single Sided Locking Options	■	■	■
100mm Restriction	■	■	■
Trickle Ventilation	■	■	■
Locking Handles	■	■	■
Folding Openers	■		■
Cockspur Handle	■		
Espagnolette Handle	■	■	■
Friction Hinges	■	■	■
Butt Hinges	■		■
Variable Angle Corner Post		■	■
System Depth			
54mm			■
72mm	■	■	
Maximum Window Sizes●			
Projected Top Hung●	upto 2300mm(W) x 2500mm(H)	upto 1500mm(W) x 1500mm(H)	upto 1800mm(W) x 1800mm(H)
Projected Side Hung●	upto 845mm(W) x 1900mm(H)	upto 900mm(W) x 1500mm(H)	upto 845mm(W) x 1800mm(H)
Top Hung with Butt Hinges●	upto 1800mm(W) x 1600mm(H)		upto 1800mm(W) x 1600mm(H)
Side Hung with Butt Hinges●	upto 900mm(W) x 1900mm(H)		upto 900mm(W) x 1800mm(H)
Applications			
New Build	■	■	■
Refurbishment	■	■	■

Notes:
* Based on the AA®720 HI Reflex^{Plus}
** Window Energy Ratings and U-values based on CEN size windows (1230mm x 1480mm) using 1.0 W/m²K double glazing with warm edge (0.048 W/m²K) spacer.
*** U-values based on CEN size windows (1230mm x 1480mm) using 0.6 W/m²K triple glazing with warm edge (0.043 W/m²K) spacer.
+ Optional/Limited
● Height and Width Limitations vary dependant on glass weights and hardware requirements – please check with the Technical Services Department
° Corresponds to the BRE Global Green Guide online generic specification for windows and achieves a summary rating of A and A+ for non-domestic schemes. www.thegreenguide.org.uk Element Number 1231500011 (A+) Element Number 1231500007 (A)



AA®720 Standard Casement Window Applications

Typical Elevations

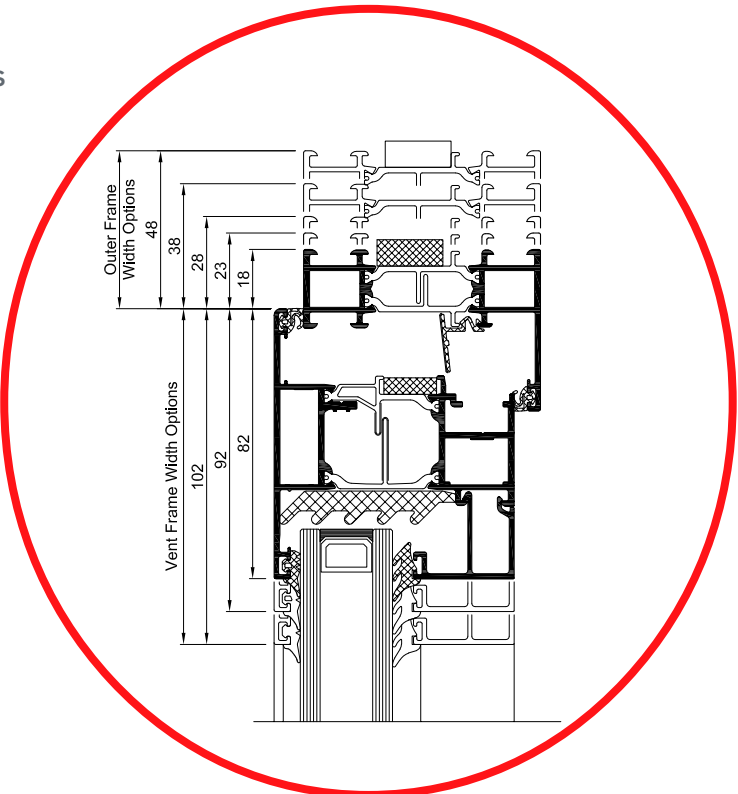
Full details can be downloaded from our website www.kawneer.co.uk

Elevation	Title	Website CAD ref. no.			
		AA®720 HI Reflex ^{Plus}	AA®720 HI Reflex	AA®720 HI	AA®720 HW
	1, 2	H24-3	H4-3	H4-3	H4-53
	3, 4	H24-4	H4-4	H4-4	H4-54
	5, 6	H24-5	H4-5	H4-5	H4-55
	7, 8	H24-6	H4-6	H4-6	H4-56
	9	H24-9	H4-9	H4-9	H4-59
	10	H24-7 & H24-8	H4-7 & H4-8	H4-7 & H4-8	H4-57 & H4-58
	11	H24-10	H4-10	H4-10	H4-60
	12	H24-11	H4-11	H4-11	H4-61
	13	H24-12	H4-12	H4-12	H4-62
	14, 15	H24-13	H4-13	H4-13	H4-63
	16, 17	H24-13	H4-13	H4-13	H4-63
	18, 19	H24-14	H4-14	H4-14	H4-64
	20, 21	H24-14	H4-14	H4-14	H4-64

Elevation	Title	Website CAD ref. no.			
		AA®720 HI Reflex ^{Plus}	AA®720 HI Reflex	AA®720 HI	AA®720 HW
	22	H24-15	H4-15	H4-15	H4-65
	23	H24-16	H4-16	H4-16	H4-66
	24	H24-17	H4-17	H4-17	H4-67
	25	H24-18	H4-18	H4-18	H4-68
	26, 27	H24-19	H4-19	H4-19	H4-69
	28	H24-20	H4-20	H4-20	H4-70
	29	H24-21	H4-21	H4-21	H4-71
	30	H24-23	H4-23	H4-23	H4-73
	31	H24-24	H4-24	H4-24	H4-74

Frame and Vent Size Options

Openable / Top Hung

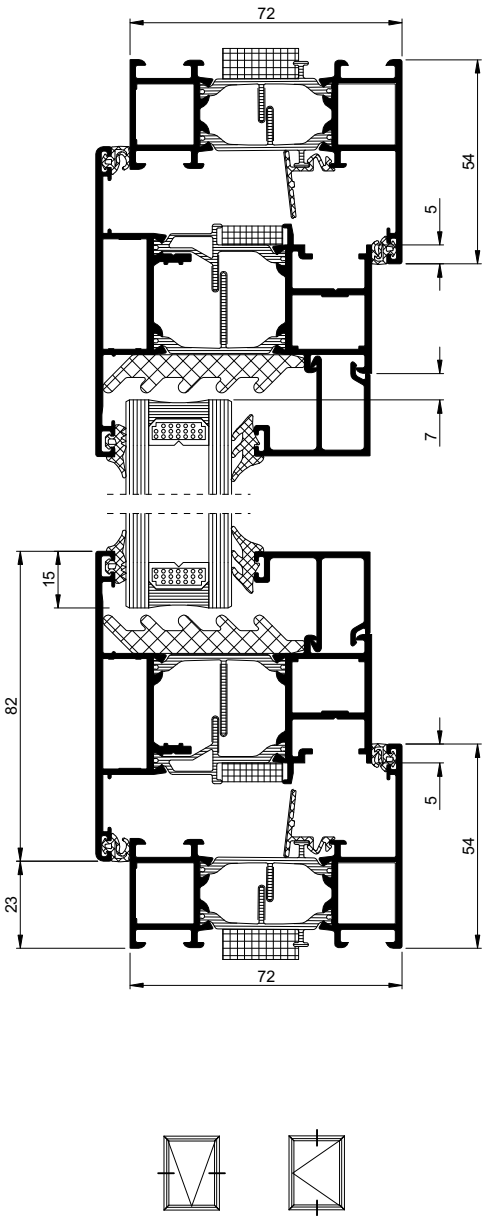


AA®720 Standard Casement Window

Full details can be downloaded from our website www.kawneer.co.uk

AA®720 HI Reflex^{Plus}

Head & Cill Detail



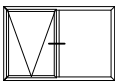
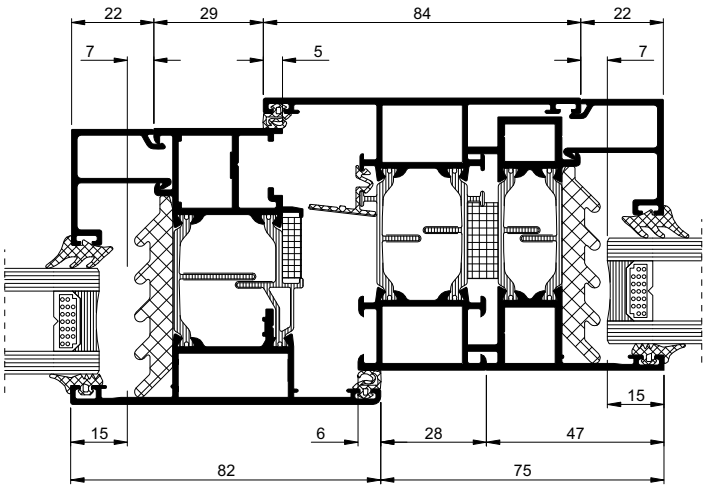
H24-13

AA®720 Standard Casement Window

Full details can be downloaded from our website www.kawneer.co.uk

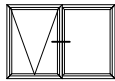
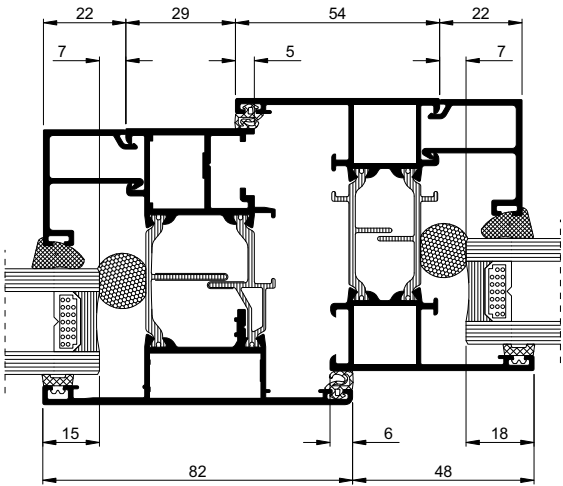
AA®720 HI Reflex^{Plus}

Vent/Fixed Light Muntin Detail



H24-18

Vent/Fixed Light Z-Muntin Detail



H18-01

AA®190 TB Door

Introduction

Kawneer design, engineer and manufacture complete door systems for most applications. Kawneer’s bespoke facility using state of the art manufacturing technology maintains high standards of processing ensuring equally high standards of performance throughout the lifetime of Kawneer products.

The AA®190 TB is an all-purpose door for use in high traffic areas and automatic entrances. Its robust construction means that it is suitable for use in heavy/severe applications. It can be installed with a finger guard pivot stile, which safeguards against injury to fingers accidentally caught between the hinge stile and frame.

Product Features and Benefits

- The AA®190 TB is the only door with welded construction, supported by a Kawneer Lifetime Guarantee offering peace of mind
- AA®190 TB Door independently tested to PAS 24 Standard - Enhanced security performance of single and double leaf external doors
- Finger Guard Pivot Stile, as standard, protects against trapped fingers when opening and closing, a child-friendly feature
- Butt hinge solution available
- An extremely robust door suitable for medium, heavy and severe duty applications
- External and internal applications offering flexibility of design
- Single, double action, auto swing and bi-parting doors, offering flexibility for a wide range of solutions
- A range of thresholds including low thresholds - Document M compliant
- Single or dual colour options

Independently Weather Performance Tested to BS 6375-1: 2015

	Air Infiltration BS EN 12207: 2000	Watertightness BS EN 12208: 2000	Wind Resistance BS EN 12210: 2000
AA®190 TB Door*	Class 2 (300 Pa)	Class 3A (100 Pa)	Class C2 (800 Pa)

* Open-In Double Door with Butt Hinges and Rebated Threshold

Data and Reports for other door configurations are available from the Technical Services Department at Runcorn.

Construction

Kawneer door systems have been proved by stringent laboratory testing. Strong construction, quality materials, precision engineering, proven hardware and attention to detail are the dependable performance features found in all Kawneer door systems.

Welded Corner Construction

The welded corner joint is the strongest aluminium door construction available, each corner having four separate weld points. Rigorous testing has verified its durability and exceptional strength, making it suitable for use in severe duty applications as defined in BS 6375-2: 2009.

Security*

The AA®190 TB Door has been independently tested to PAS 24 for the enhanced security performance of single and double leaf external doors. The AA®190 TB Door meets light, medium, heavy and severe use specifications and is suitable for external and internal doors in all types of buildings from offices and schools to public use doors such as in shops and hospitals.

* Does not refer to standard hardware, security hardware required.



AA®190 TB Commercial Entrance Door Product Details

Product Sizes and Options

Feature	Finger Guard Pivot	Butt Hinge	Auto Slide
Max Leaf Height	3000mm	3000mm	3000mm
Max Leaf Width	1320mm	1200mm	1500mm
Max Leaf Area	3.3m²	3.0m²	4.5m²
Double Glazing	✓	✓	✓
Triple Glazing	✓	✓	✓
Single Action	✓	✓	
Dual Action	✓		
Max Leaf Weight with Concealed Closer	120kg		
Max Leaf Weight with Floor Spring	200kg		
Max Leaf Weight with Surface Mounted Closer	120kg	120kg	
Concealed Panic	✓	✓	
Surface Mounted Panic	✓	✓	
BS 8300-2: 2018 Compliant Threshold	✓	✓	
Rebated Threshold		✓	

The Royal Mint, Llantrisant
Architect: Rio Architects
Image © The Royal Mint





AA®190 TB Round Finger Guard with Threshold (internal view)



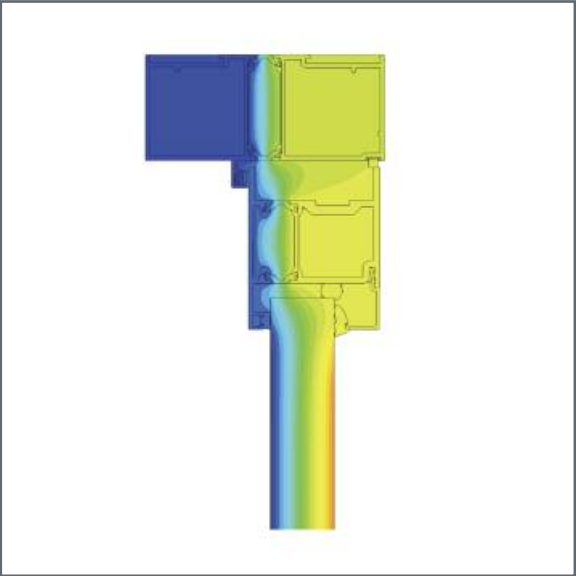
AA®190 TB Butt Hinge and Rebated Threshold Open Out (external view)

All options are available in the 'H' Section of the AA®190 TB Product Manual

U-values

U-values are based on a standard single door, open out on a CEN sized door

Single - Open Out - Low Threshold		
Centre Pane Ug	1.0 W/m²K	0.7 W/m²K
Whole Door Uw	1.73 W/m²K	1.52 W/m²K



Butt Hung Open In Head Detail



Butt Hung Open In Threshold

AA®190 TB Door

Typical Elevations

Full details can be downloaded from our website www.kawneer.co.uk

Elevation		Title	Website CAD ref. no.	
Single Leaf Doors	Double Leaf Doors		Round Finger Guard	Flat Finger Guard
		1 Head 2 Threshold 3 Midrail 4 Pivot Stile 5 Lock Stile 6 Meeting Stile	H1 02.01 H1 03.01, H1 04.01 H1 05.01 H1 07.01 H1 08.01, H1 13.01 H1 09.01, H1 11.01 H1 12.01, H1 14.01 H1 15.01, H1 16.01 H1 10.01	H2 02.01 H2 03.01, H2 04.01 H2 05.01 H2 07.01 H2 08.01, H2 11.01 H2 09.01, H2 12.01 H2 10.01
Single Leaf Doors	Double Leaf Doors		Butt Hinge Open-in	Butt Hinge Open-out
		1 Head 2 Threshold 3 Midrail 4 Hinge Stile 5 Lock Stile 6 Meeting Stile	H3 02.01, H3 11.01 H3 03.01, H3 04.01 H3 05.01, H3 06.01 H3 07.01 H3 08.01, H3 12.01 H3 09.01, H3 13.01 H3 10.01	H4 02.01, H4 11.01 H4 03.01, H4 04.01 H4 05.01, H4 06.01 H4 07.01 H4 08.01, H4 12.01 H4 09.01, H4 13.01 H4 10.01
Auto Slide (single)	Auto Bi-Parting		Auto Slide	
		1 Head 2 Threshold 3 Midrail 4 Jamb 5 Lock Stile 6 Meeting Stile	H5 02.01 H5 03.01, H5 04.01 H5 05.01 H5 07.01 H5 08.01 H5 09.01 H5 10.01	

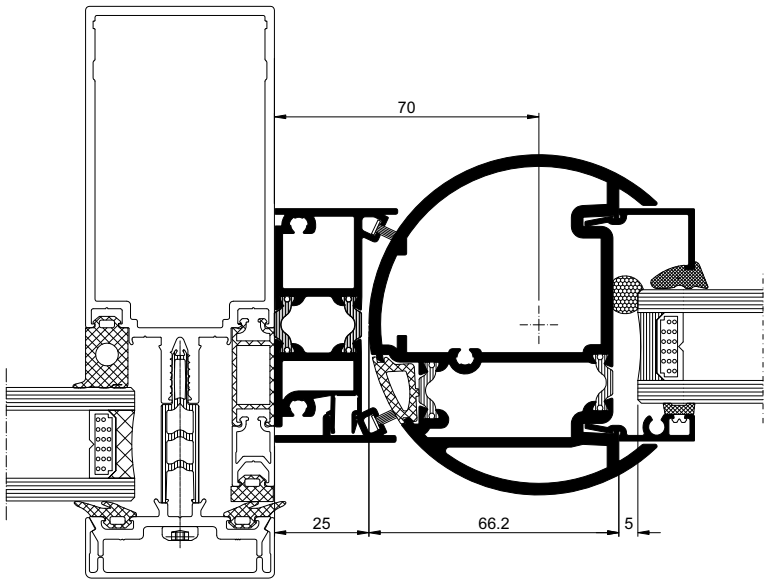


AA®190 TB Door

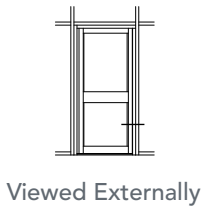
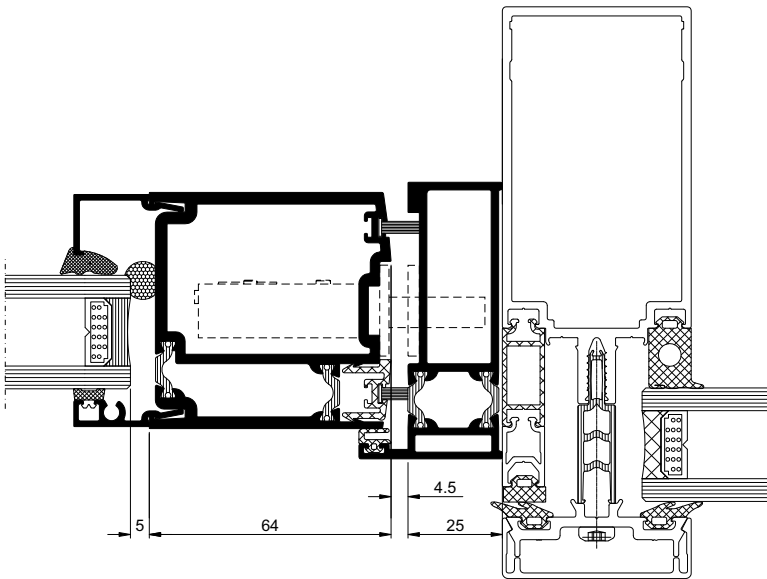
Full details can be downloaded from our website www.kawneer.co.uk

Finger Guard Pivot Door

Jamb Detail - Curtain Wall Adaptor



Jamb Detail – Lock Stile Curtain Wall Adaptor

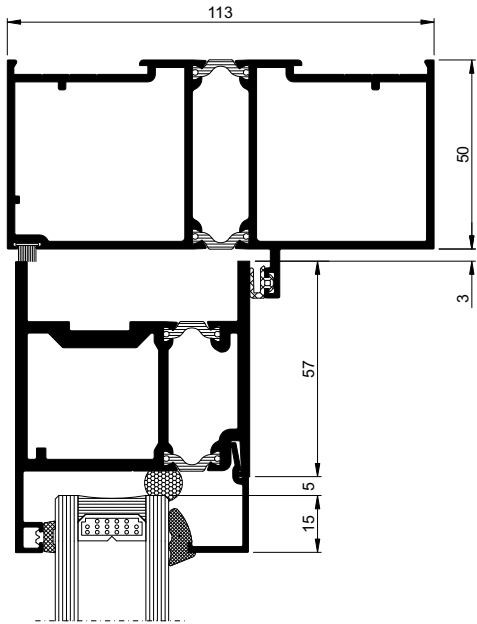


AA®190 TB Door

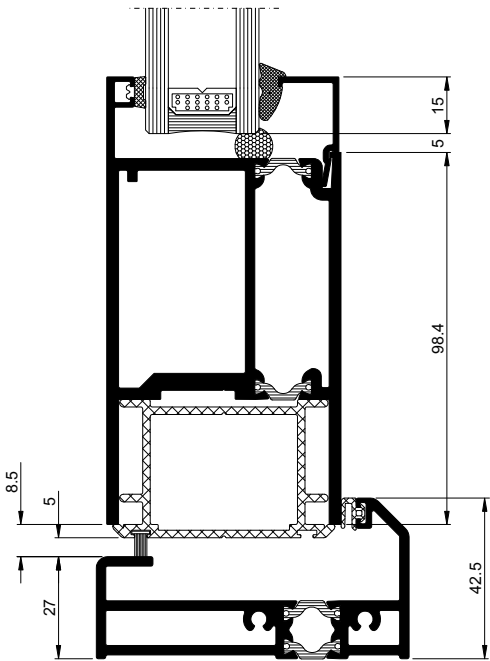
Full details can be downloaded from our website www.kawneer.co.uk

Butt Hinge Door

Head Detail (Open Out)



Rebated Threshold Detail (Open Out)

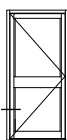
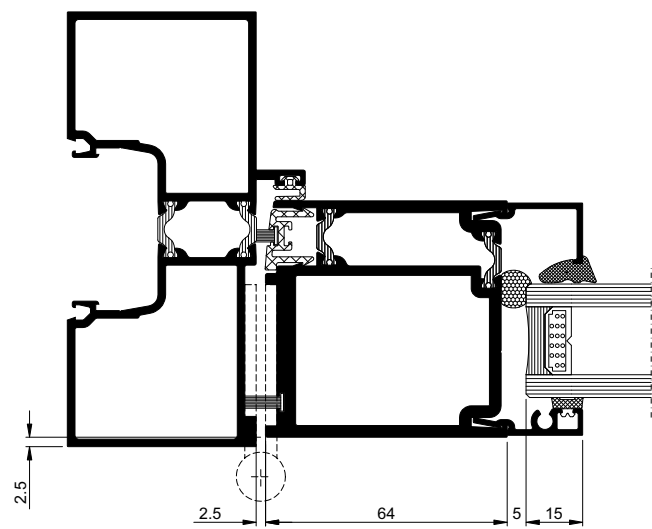


AA®190 TB Door

Full details can be downloaded from our website www.kawneer.co.uk

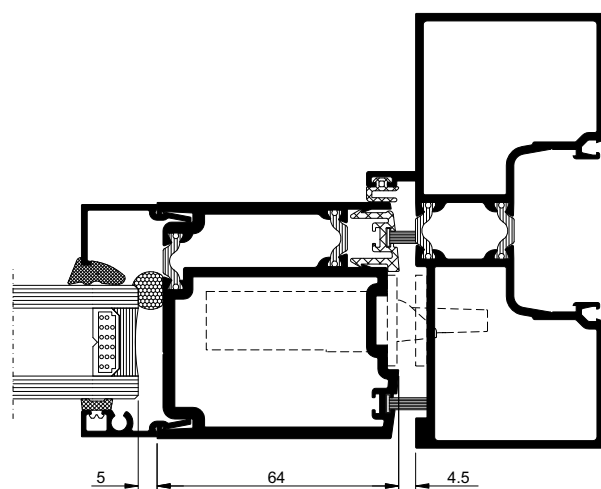
Butt Hinge Door

Jamb Detail - Hinge Stile (Open Out)



H4 08.01
Viewed Externally

Jamb Detail - Lock Stile (Open Out)



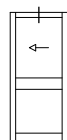
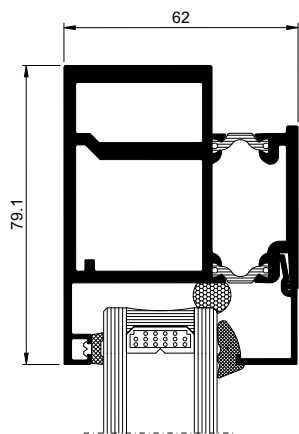
H4 09.01
Viewed Externally

AA®190 TB Door

Full details can be downloaded from our website www.kawneer.co.uk

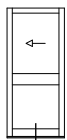
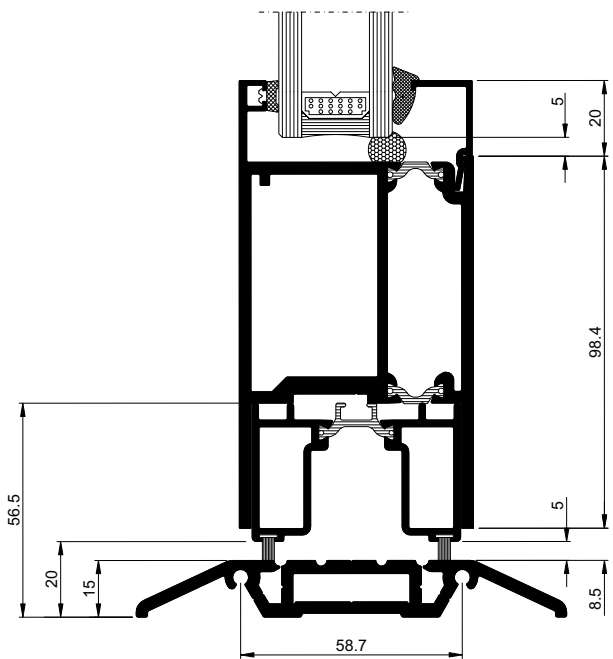
Auto Slider

Head Rail



H5 02.01
Viewed Externally

Threshold



H5 03.01
Viewed Externally

Appendix F. Window Colour Choice Information (Proposed)

The colour chosen is deemed to be the closest match to the existing windows.

RAL Classic



RAL White and black hues

Home > RAL Classic > RAL White and black hues

The category **White and black hues** in the collection **RAL Classic** (which is part of the RAL color system) contains **14** colors. Press a color for more information.

Yellow hues >

Orange hues >

Red hues >

Violet hues >

Blue hues >

Green hues >

Grey hues >

Brown hues >

White & black hues >

RAL 9001

RAL 9002

RAL 9003

RAL 9004

RAL 9005

RAL 9006

RAL 9007

RAL 9010

RAL 9011

RAL 9016

RAL 9017

RAL 9018

RAL 9022

RAL 9023

15th
ANNIV. Banggood



Jonathan Holland
Atkins Limited
Nova North
11 Bressenden Place
Westminster
London
SW1E 5BY

© Atkins Limited except where stated otherwise