

Key Plan

Window Schedule - WT01					
Window Type	Manufacturer	Structural Opening Size		U-Value	Finish
		SO Width	SO Height		
WT01	West Coast Windows	1585	2100	1.4	RAL1014

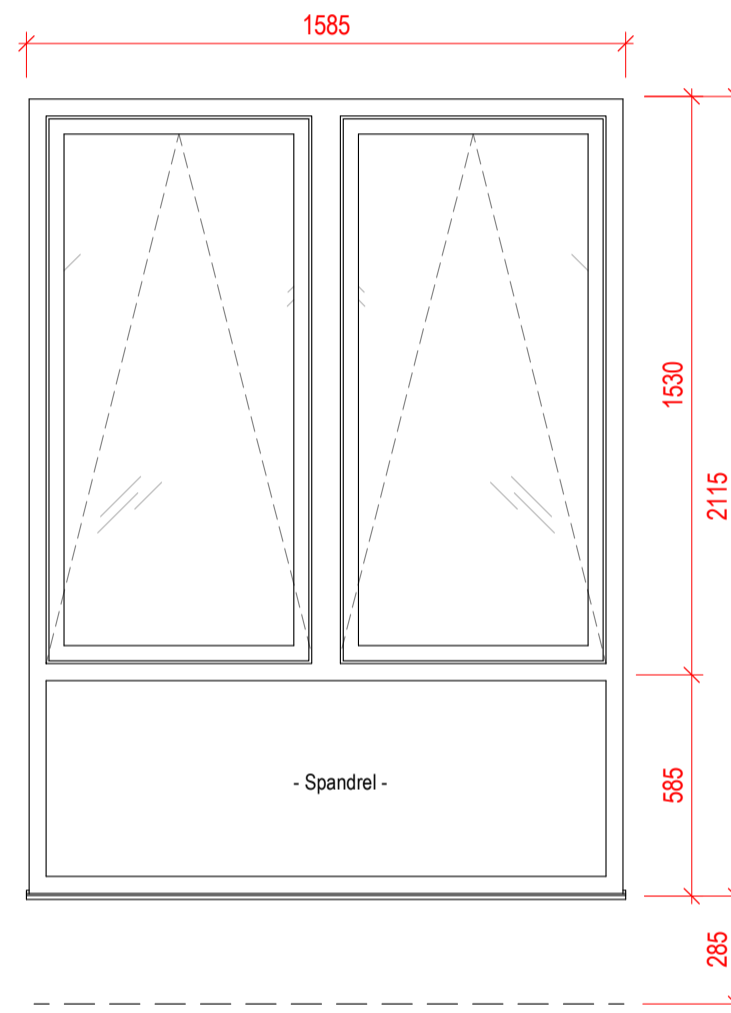
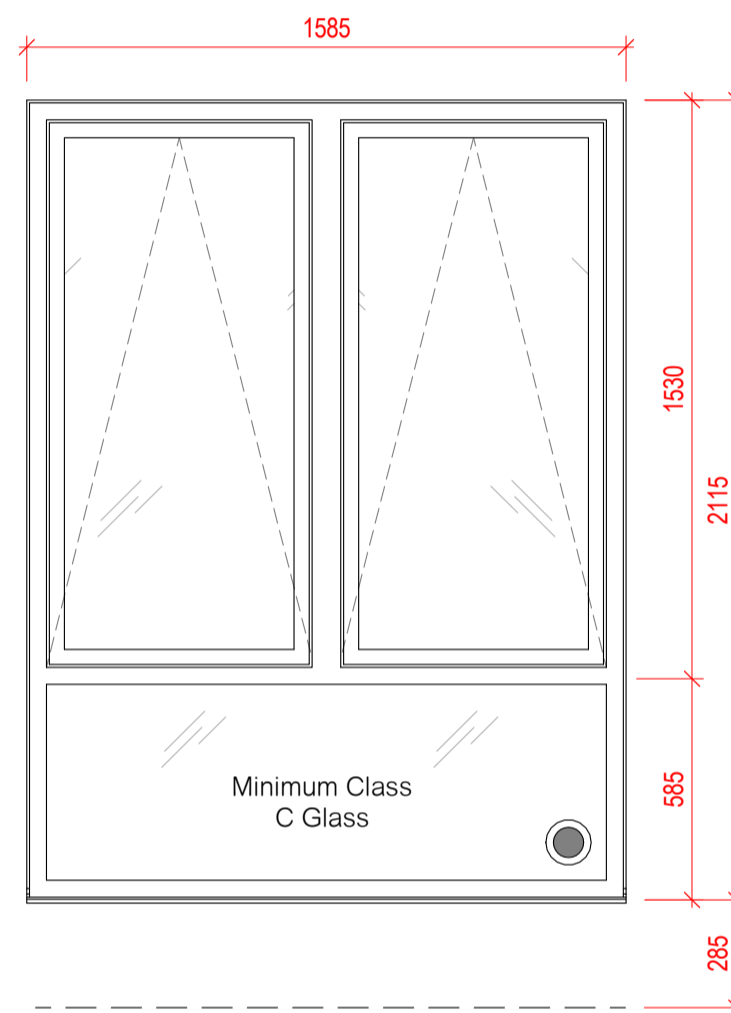
5  
Total: 5  
\*GF Windows require egress, refer to schedule.

Window Schedule - WT02					
Window Type	Manufacturer	Structural Opening Size		U-Value	Finish
		SO Width	SO Height		
WT02	West Coast Windows	1585	2400	1.4	RAL1014

51  
Total: 51

Window Schedule - WT05					
Window Type	Manufacturer	Structural Opening Size		U-Value	Finish
		SO Width	SO Height		
WT05	West Coast Windows	460	2100	1.4	RAL1014

8  
Total: 8



Window Schedule - WT03					
Window Type	Manufacturer	Structural Opening Size		U-Value	Finish
		SO Width	SO Height		
WT03	West Coast Windows	3498	2400	1.4	RAL1014
20					
WT03a	West Coast Windows	3385	2400	1.4	RAL1014
12					
WT03f	West Coast Windows	3498	825	1.4	RAL1014
2					

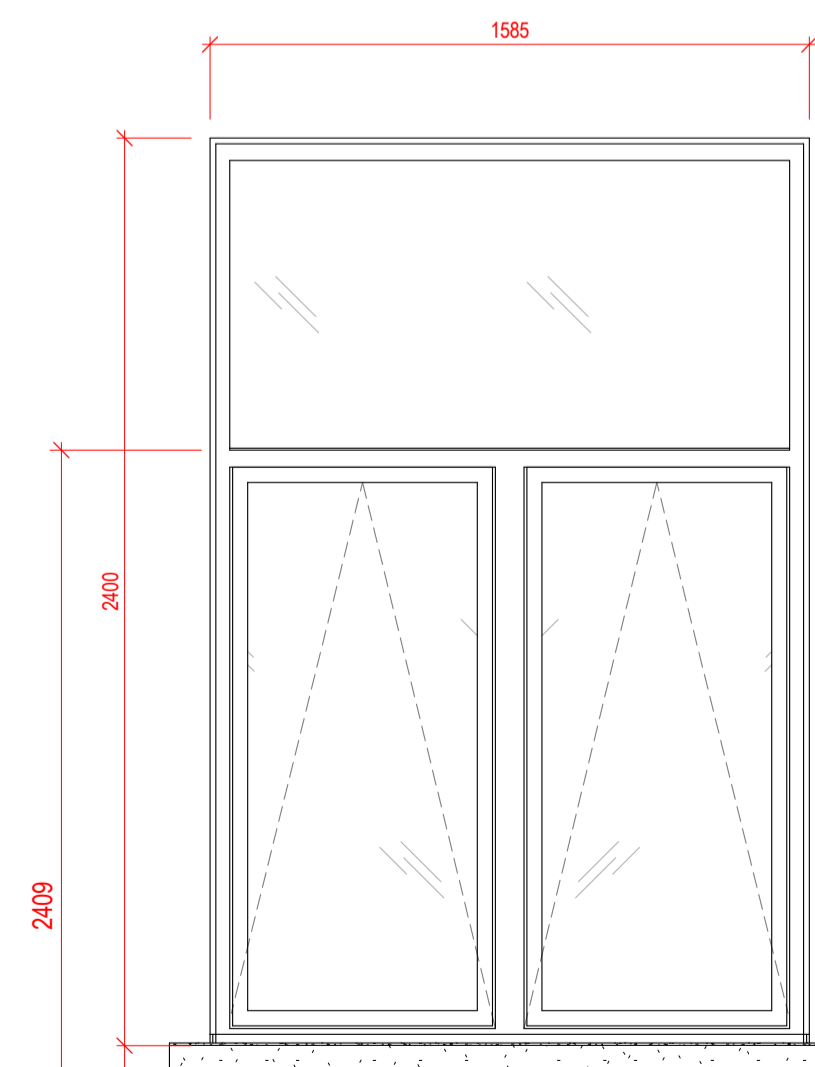
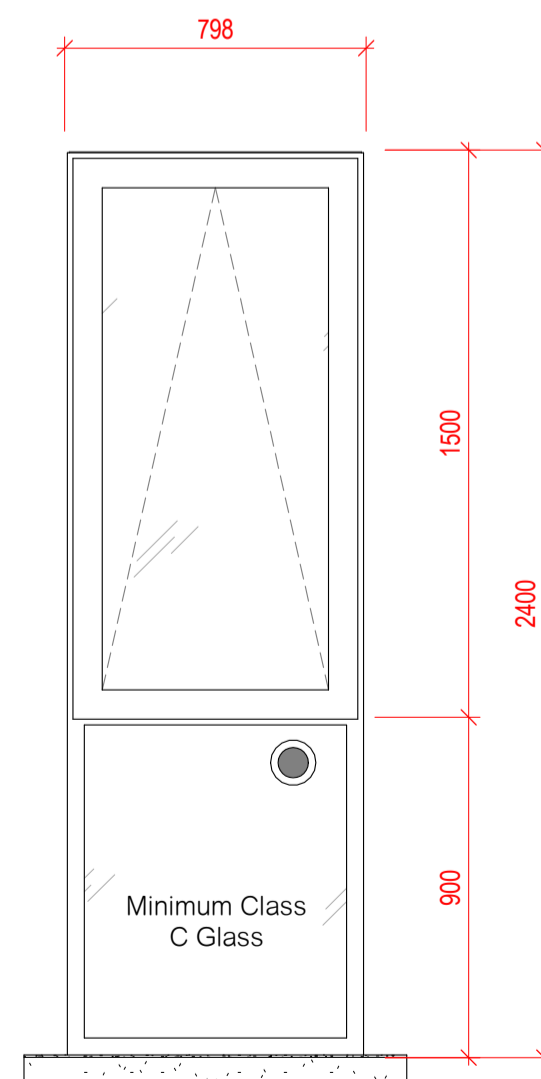
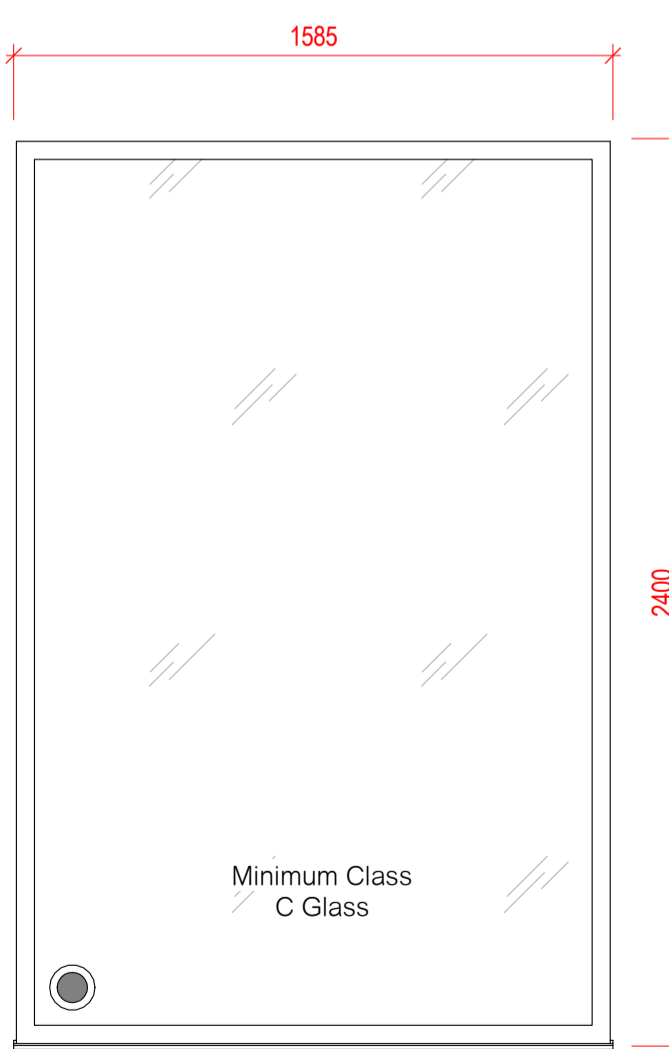
Total: 34

Window Schedule - WT07					
Window Type	Manufacturer	Structural Opening Size		U-Value	Finish
		SO Width	SO Height		
WT07	West Coast Windows	1585	2115	1.4	RAL1014

8  
Total: 8

Window Schedule - WT07A					
Window Type	Manufacturer	Structural Opening Size		U-Value	Finish
		SO Width	SO Height		
WT07A	West Coast Windows	1585	2115	1.4	RAL1014

2  
Total: 2



Window Schedule - WT11					
Window Type	Manufacturer	Structural Opening Size		U-Value	Finish
		SO Width	SO Height		
WT11	West Coast Windows	1585	2400	1.4	TBC

5  
Total: 5  
\*GF Windows require egress, refer to schedule.

**Windows**

- Refer to architect's general arrangement & elevation drawings for window locations and handing. Lines indicating opening in elevations point to the hinge side.
- Dimensions are structural opening dimensions. **CONTRACTOR TO CHECK ALL SITE DIMENSIONS PRIOR TO ORDERING.** All windows to be sized to allow for installation and building tolerances.
- Except for ADV and egress windows, windows shall be fitted with a lockable security restrictor (without push button) to allow the windows to be opened a minimum of 75mm and to prevent the windows being opened more than 100mm. It should not be possible to operate the security restrictor from outside of window.
- Ironmongery to be to the Employers approval. Handles to incorporate window locks (key operated) to lock the window in the closed and right vent positions. Push button will not be acceptable. Ironmongery to wheelchair units require specialist handles. Extension poles not acceptable. Refer to adaptability schedule for requirements (if any) to wheelchair adaptable units.
- Allow for obscure/opaque glazing units to bathrooms, shower rooms WC's and Kitchen where worktop passes in front of glazing.
- Window boards shall be moisture resistant, MDF with a bull nosed exposed edge.
- Glazing throughout is to be hermetically sealed double/triple glazed, laminated/toughened glass units with internal glazing beads. To be factory glazed and finished where practical. Internally beaded.
- Refer to fire strategy drawings for locations of fire rated glazing.

TRICKLE VENTS: required as per M&E design and building regulations.

SAFETY GLASS: 6.4mm Laminated glass outer pane to all ground floor windows, with 6mm inner toughened pane if glazing is less than 800mm from finished floor level. All glazed elements within 800mm of FFL to have safety glass.

SBD: Ground floor and podium accessible windows and doors to be PAS 24:2012. Windows must also meet BS 644 and be fixed to surrounding structure at a max 600mm centres, with a min 2No. fixings per side. SBD windows to include 6.4mm laminated outer pane.

- Window and Door units to achieve:
- PAS 24:2012, or
  - STS 204 Issue 3:2012, or
  - LPS1175 Issue 7:2010 SR 1, or
  - LPS 2081 Issue 1:2014SR A.

CLEANING: Manufacturer to ensure all external glazing is in accordance with approved window cleaning strategy, and in accordance with BS-8213 and all other relevant codes of practice.

U-Values: Glazing to achieve 1.40 Win2K as required by the McBains Energy Strategy set out in the approved planning documents.

ACOUSTIC: Window and door acoustic performance to specialist report.

AIR TIGHTNESS: All windows and doors to be draught sealed and of adequate specification to achieve the required air permeability rating.

**CONTROLS: to be not more than 1200mm from FFL.**

**RAL colours:**  
Exterior: RAL 2014  
Interior: RAL 9010

- Egress Windows:**  
The exit windows will adopt the recommendations outlined in paragraph 3.6 of ADB V1, as below:
  - The window should have an unobstructed openable area of at least 0.33m<sup>2</sup>.
  - The window opening should have a minimum critical dimension of 450mm (in height or width).
  - The bottom of the window should be no more than 1100mm above the finished internal floor level.

**Glazing**

- Safety glass (All glazed elements within 800mm of FFL to have safety glass)

Refer to schedule for laminated glass requirements for SBD.

Top of transom below openable casement and tilt & turn to be no lower than 800mm above FFL.

Please note that window elevations shown are the elevation of the outside face of the window.

Revision	Date	By	Reason
C04	25/11/21	CR	Construction Issue full set for Completeness
C03	18/10/21	CR	Window Revised as per RCKa comments
C02	08/10/21	CR	Window RAL Updated
C01	10/09/21	CR	Windows Construction Issue
P3	05/08/21	CR	Window Updates
P2	29/05/21	CR	WT05 Added
P1	21/05/21	CR	First Issue

Revision History

**hunters**

Space One Beaton Road  
London W6 0EA  
T 020 8237 8200  
mhb@hunters.co.uk  
www.hunters.co.uk



**HNCC**

25 Bertram Street, Highgate,  
London, N19 5DQ

**BLOCK A - WINDOW TYPES**

Status: **S4 - CONSTRUCTION**

hunters project number:	client project number:	scale:	drawn by:	checked by:
M9920	HNCC	1:20 @ A1	CR	PG

drawing title:

**HNCC HUN-01-ZZ-DR-A-54-11000**

revision	date	revised by
<b>C04</b>	25/11/21	CR

Construction Issue full set for Completeness

0 0.5m 1m

Scale: 1:20

All drawings are to be printed in colour.

model ref: C:\Revit Local\HNCC-HUN-ZA-ZZ-05-A-XX-0001\_c\_rooney\ALW3X.rvt

Use figured dimensions only. All levels and dimensions to be checked on site. This drawing is to be read in conjunction with all other relevant drawings and specifications. Hunters is a trading name of Hunter & Partners Limited. © Hunter & Partners Limited. All rights reserved.