

Key Plan

Revision	Date	By	Checked by	Description
C05	25/11/21	CR		Construction Issue full set for Completeness
C04	05/10/21	CR		Curtain Wall Schedule With Update
C03	06/09/21	CR		Coordination with Curtain Walling Supplier
C02	07/09/21	CR		Fire Strategy Revisions as Agreed with BWC. Door + AOV Added to Curtain Walling
C01	16/08/21	CR		Curtain Walling Updates
P3	28/07/21	CR		Room Layouts Issue
P2	04/06/21	CR		Notes added to Curtain wall drawing
P1	21/05/21	CR		First Issue

Revision History

**hunters**  
Space One Beaton Road  
London W8 0EA  
T: 020 8237 8200  
m.h@hunters.co.uk  
www.hunters.co.uk

**FARRANS**  
**Camden**  
**Doran CONSULTING**  
**Camlins**  
**simple mckillop**  
**Harvey**

**HNCC**  
25 Bertram Street, Highgate,  
London, N19 5DQ

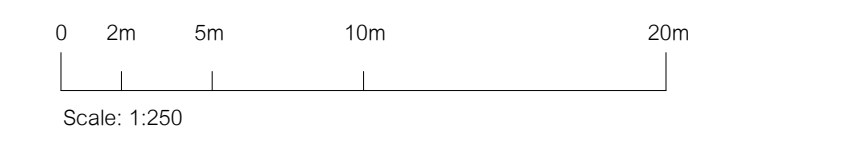
**BLOCK A - CURTAIN WALL SCHEDULE**

Status:

hunters project number: M9920 client project number: HNCC scale: As @ A1 CR checked by: PG  
indicated

drawing title:  
**HNCC HUN-01-ZZ-DR-A-52-10001**

revision: C05 date: 25/11/21 revised by: CR  
Construction Issue full set for Completeness



All drawings are to be printed in colour.  
model ref: C:\Revit Local\HNCC\HUN-ZZ-01-A-XX-0001\_r\_0001\ALW3X.rvt  
Use figured dimensions only. All levels and dimensions to be checked on site. This drawing is to be read in conjunction with all other relevant drawings and specifications. Hunters is a trading name of Hunter & Partners Limited. © Hunter & Partners Limited. All rights reserved.



- Glazed panels and any side lights in the curtain glazing to be laminated double glazed. A 25 year guarantee shall be provided against failure of the seal.
- Aluminium robust pivot doors
- Doors to have a factory applied finish to match windows. 20 year warranty against blistering, cracking, flaking or erosion of the coating.
- Fob entry- where shown on compliance drawings. Please refer to M&E drawings/ reports/ specifications/ Fire engineer drawings/ reports/ specifications. Note: FB lock or similar approved required
- Door sets must have a kitemark. Doors must be power assisted.
- AOV required as per Fire Strategy
- Integral weather seals- The type of weather-stripping should not increase resistance or suction in opening and shutting
- Proprietary level thresholds with adequate protection to prevent against water ingress. In accordance with BS 8300: 2009 + A1:2010.
- A proprietary drainage channel with integral gully grating should be incorporated in front of the flush threshold detail to eliminate the possibility of wind driven rain under the door.

**A-GF-CW01**  
1 : 20

A-GF-CW01							AcousticRating
Mark	Height	Width	Manufacturer	U Value	Access Control	Frame Finish	
CW01	3000	5410	TBC	0.4	Yes	RAL 1014	Glazing 41 dB Rw overall and an R125Hz value of 25 dB (sound reduction at a frequency of 125 Hz)

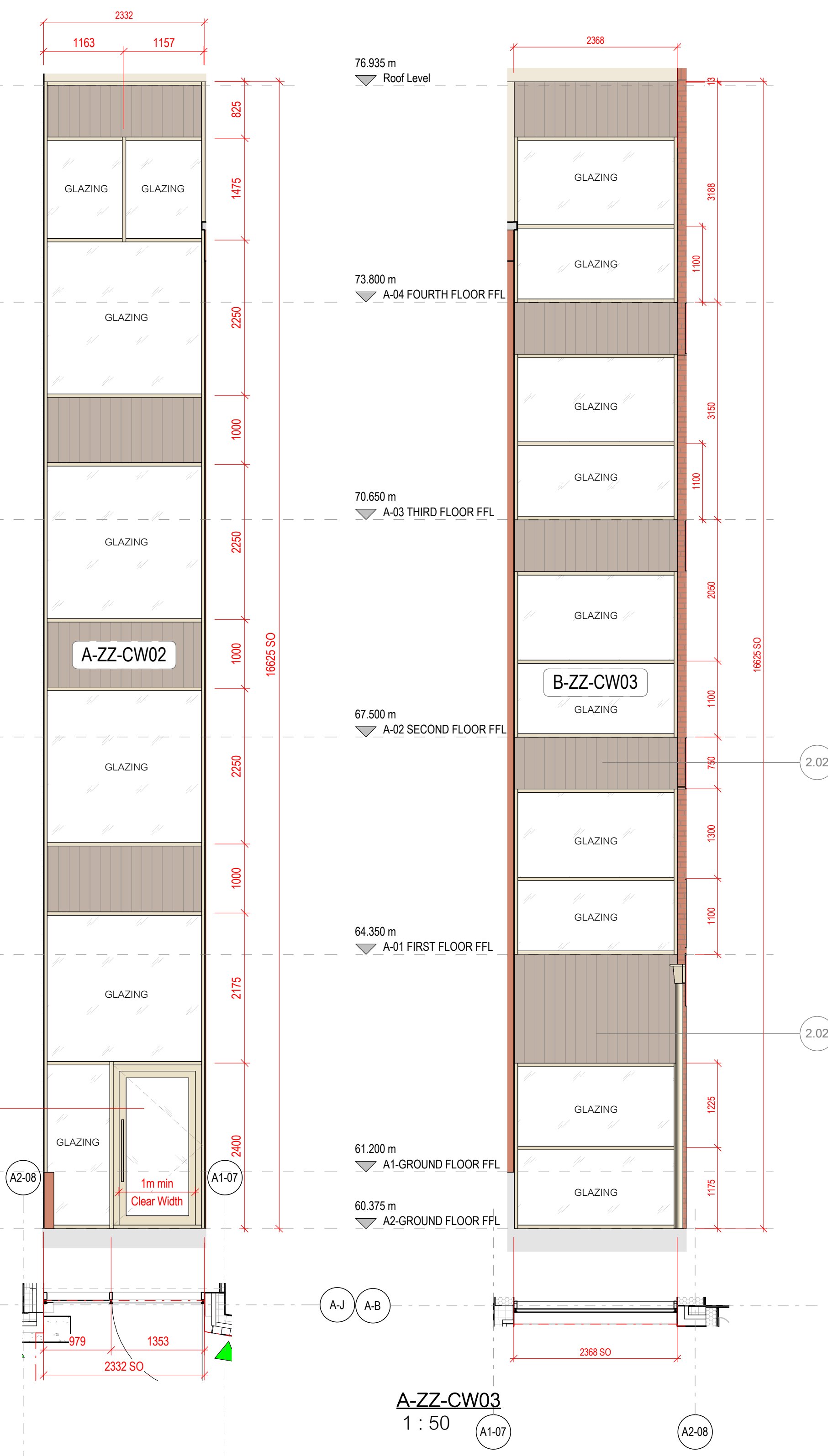
**PART M1 Requirements**  
• All entrance doors should have 1m clear width as per Part M1.

**A-ZZ-CW02**  
1 : 50

A-ZZ-CW02							AcousticRating
Mark	Height	Width	Manufacturer	U Value	Frame Finish		
CW02	16625	2332	TBC	0.4	RAL 1014		Glazing 41 dB Rw overall and an R125Hz value of 25 dB (sound reduction at a frequency of 125 Hz)

**A-ZZ-CW03**  
1 : 50

A-ZZ-CW03							AcousticRating
Mark	Height	Width	Manufacturer	U Value	Frame Finish		
CW03	16625	2368	TBC	0.4	RAL 1014		Glazing 41 dB Rw overall and an R125Hz value of 25 dB (sound reduction at a frequency of 125 Hz)



**A-ZZ-CW02**  
1 : 50

**A-ZZ-CW03**  
1 : 50