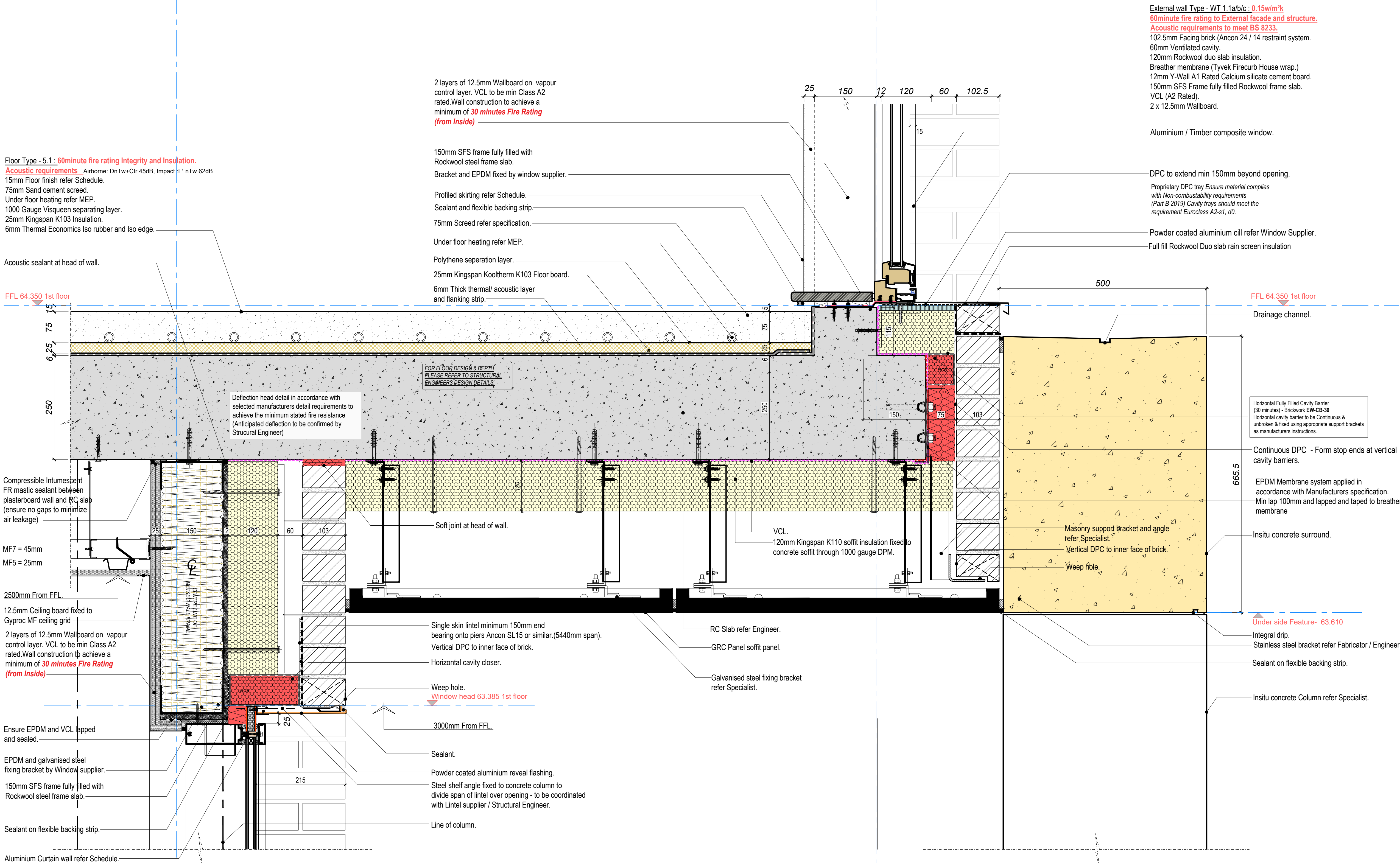


A - J

A - K



Floor Type - 5.1 : 60minute fire rating Integrity and Insulation.
Acoustic requirements - Airborne: DnTw+Ctr 45dB, Impact: L'nTw 62dB
 15mm Floor finish refer Schedule.
 75mm Sand cement screed.
 Under floor heating refer MEP.
 1000 Gauge Visqueen separating layer.
 25mm Kingspan K103 Insulation.
 6mm Thermal Economics Iso rubber and Iso edge.

2 layers of 12.5mm Wallboard on vapour control layer. VCL to be min Class A2 rated. Wall construction to achieve a minimum of **30 minutes Fire Rating (from Inside)**

150mm SFS frame fully filled with Rockwool steel frame slab.
 Bracket and EPDM fixed by window supplier.
 Profiled skirting refer Schedule.
 Sealant and flexible backing strip.
 75mm Screed refer specification.
 Under floor heating refer MEP.
 Polythene separation layer.
 25mm Kingspan Kooltherm K103 Floor board.
 6mm Thick thermal/ acoustic layer and flanking strip.

External wall Type - WT 1.1a/b/c : 0.15w/m²/k
60minute fire rating to External facade and structure.
Acoustic requirements to meet BS 8233.
 102.5mm Facing brick (Ancon 24 / 14 restraint system).
 60mm Ventilated cavity.
 120mm Rockwool duo slab insulation.
 Breather membrane (Tyvek Firecurb House wrap.)
 12mm Y-Wall A1 Rated Calcium silicate cement board.
 150mm SFS Frame fully filled Rockwool frame slab.
 VCL (A2 Rated).
 2 x 12.5mm Wallboard.

Aluminium / Timber composite window.
 DPC to extend min 150mm beyond opening.
 Proprietary DPC tray Ensure material complies with Non-combustibility requirements (Part B 2019) Cavity trays should meet the requirement Euroclass A2-s1, d0.
 Powder coated aluminium cill refer Window Supplier.
 Full fill Rockwool Duo slab rain screen insulation

FFL 64.350 1st floor

FFL 64.350 1st floor

Compressible Intumescent FR mastic sealant between plasterboard wall and RC slab (ensure no gaps to minimize air leakage)
 MF7 = 45mm
 MF5 = 25mm
 2500mm From FFL.
 12.5mm Ceiling board fixed to Gyproc MF ceiling grid
 2 layers of 12.5mm Wallboard on vapour control layer. VCL to be min Class A2 rated. Wall construction to achieve a minimum of **30 minutes Fire Rating (from Inside)**

Deflection head detail in accordance with selected manufacturers detail requirements to achieve the minimum stated fire resistance (Anticipated deflection to be confirmed by Structural Engineer)

FOR FLOOR DESIGN & DEPTH PLEASE REFER TO STRUCTURAL ENGINEERS DESIGN DETAILS.

Horizontal Fully Filled Cavity Barrier (30 minutes) - Brickwork EW-CB-30
 Horizontal cavity barrier to be Continuous & unbroken & fixed using appropriate support brackets as manufacturers instructions.

Continuous DPC - Form stop ends at vertical cavity barriers.
 EPDM Membrane system applied in accordance with Manufacturers specification. Min lap 100mm and lapped and taped to breather membrane

Insitu concrete surround.
 Under side Feature- 63.610
 Integral drip.
 Stainless steel bracket refer Fabricator / Engineer.
 Sealant on flexible backing strip.
 Insitu concrete Column refer Specialist.

Ensure EPDM and VCL lapped and sealed.

EPDM and galvanised steel fixing bracket by Window supplier.
 150mm SFS frame fully filled with Rockwool steel frame slab.
 Sealant on flexible backing strip.

Aluminium Curtain wall refer Schedule.

Single skin lintel minimum 150mm end bearing onto piers Ancon SL15 or similar (5440mm span).
 Vertical DPC to inner face of brick.
 Horizontal cavity closer.

Weep hole.
 Window head 63.385 1st floor

3000mm From FFL.

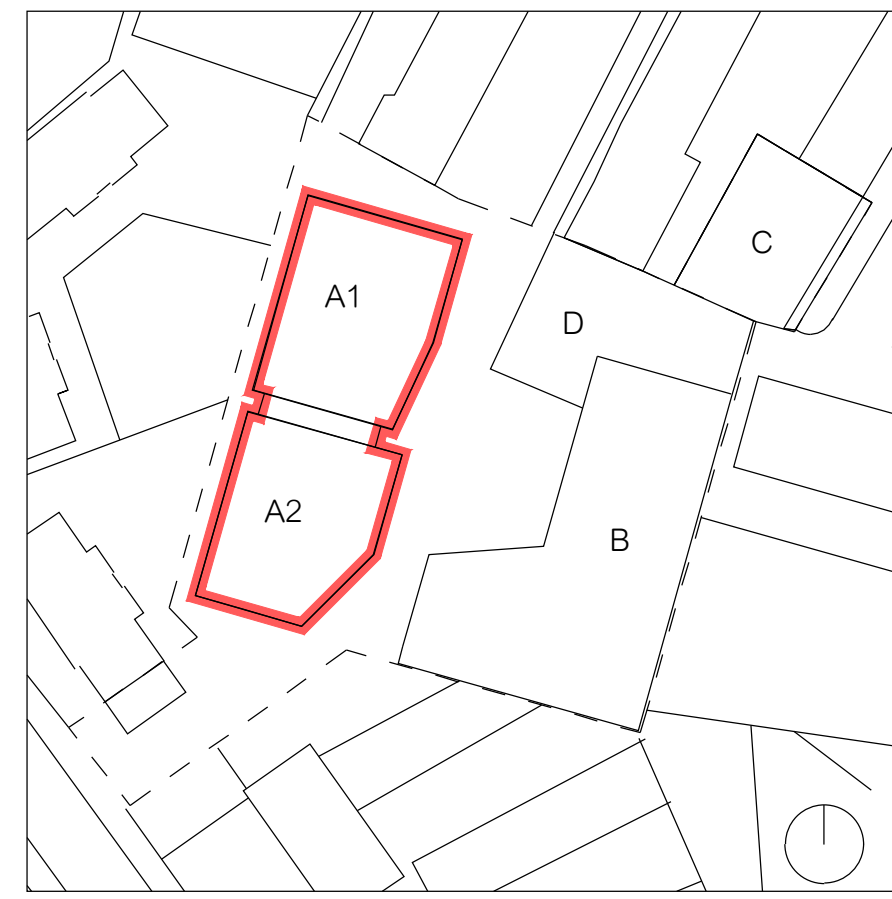
Sealant.
 Powder coated aluminium reveal flashing.
 Steel shelf angle fixed to concrete column to divide span of lintel over opening - to be coordinated with Lintel supplier / Structural Engineer.
 Line of column.

RC Slab refer Engineer.
 GRC Panel soffit panel.
 Galvanised steel fixing bracket refer Specialist.

25 150 12 120 60 102.5

500

665.5



Key Plan

C1	11.11.2021	DF	Surround changed to Insitu concrete. Issued for Construction.
P2	03.09.2021	DF	Windows revised.
P1	30.07.2021	DF	Issued for Comment.

Revision History

hunters
 Space One Beakon Road
 London W8 5EA
 T 020 8237 6200
 F 020 8741 2914
 mail@hunters.co.uk
 www.hunters.co.uk

HNCC
 25 Bertram Street,
 Highgate,
 London,
 N19 5DQ

BLOCK A - FLOOR / WALL JUNCTION
 PUBLIC ENTRANCE FEATURE CONCRETE SECTION - 1

Status: S2 - FOR INFORMATION

hunters project number:	client project number:	scale:	drawn by:	checked by:
M9920	HNCC	1:5	DF	PG

drawing title: HNCC-HUN-01-ZZ-DR-A-41-11020

revision	date
C1	20.04.2021

1- PUBLIC ENTRANCE CONCRETE CORNICE FEATURE DETAIL - 1.
 Scale 1:5

All drawings are to be printed in colour.
 file ref: HNCC-HUN-01-B1-DR-A-41-11020- rev C1.dwg
 Use figured dimensions only. All levels and dimensions to be checked on site. This drawing is to be read in conjunction with all other relevant drawings and specifications. Hunters is a trading name of Hunter & Partners Limited. © Hunter & Partners Limited. All rights reserved.