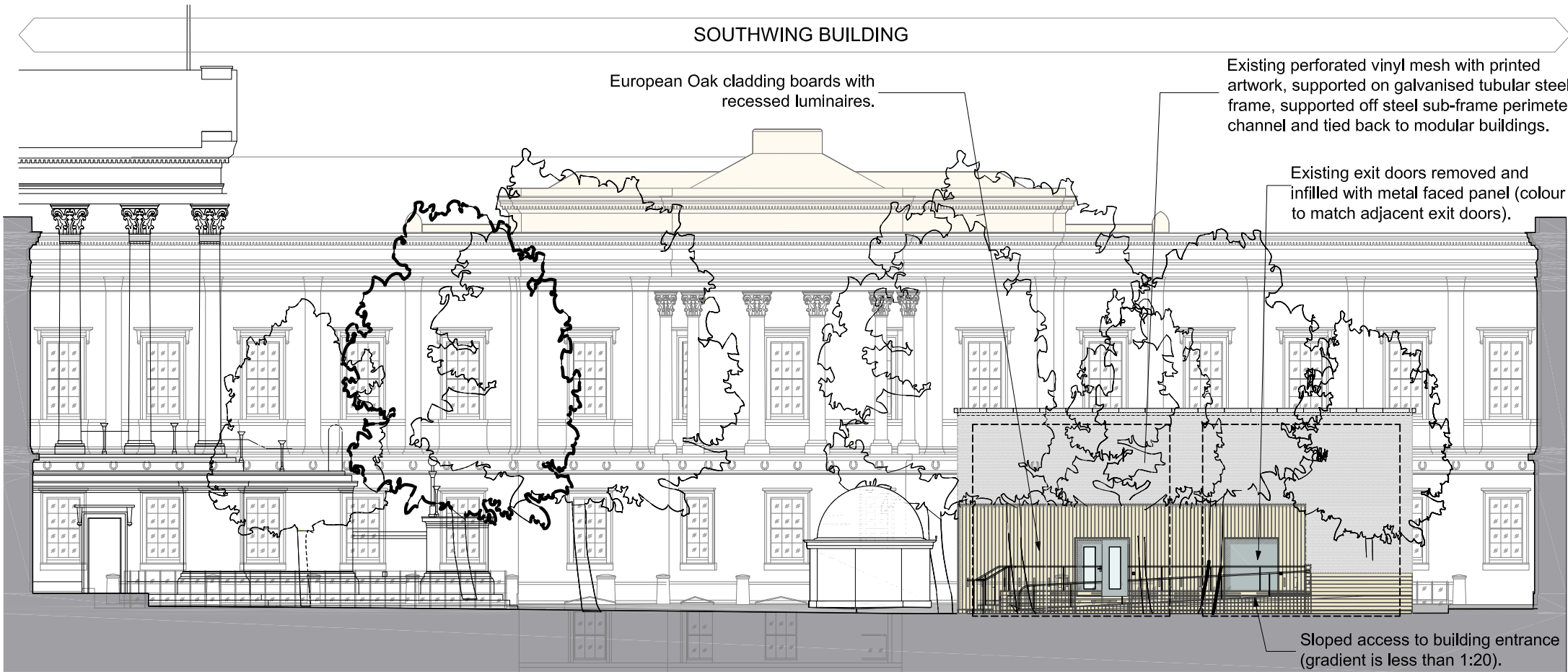


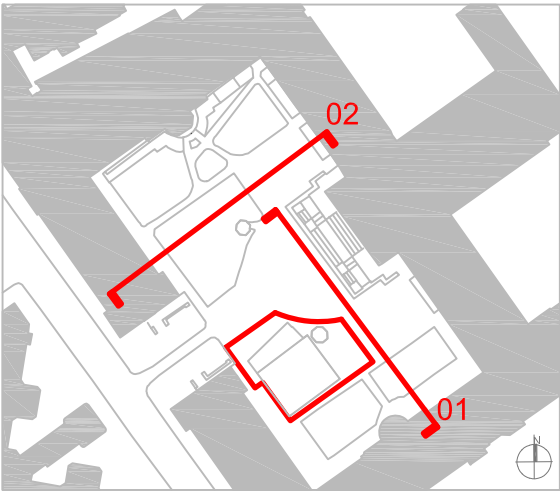


01 Proposed South West Elevation

SOUTHWING BUILDING



02 Proposed South East Elevation



Rev.	Date	Description	Dm.	Chkd	Appd	Key Plan:
PL	13/12/21	PLANNING ISSUE	RS	RS	LSG	

Issue Status:
PLANNING ISSUE
Project Title:
UCL Budge - Pop-up labs
Main Quad
Drawing Title:
Proposed Elevations
South West & South East

twelve
architects & masterplanners
twelve architects & masterplanners
148 Tooley Street | London | SE2 1TU | UK
t: +44 (0) 207 846 2012
e: info@twelvearchitects.com
w: www.twelvearchitects.com

Scale: A3 1:100	Date: 15/12/21	Drawn: RS	Checked: RS	Approved: LSG	Job No.: 12.2126	Drawing No.: (PL)400	Revision: PL
--------------------	-------------------	--------------	----------------	------------------	---------------------	-------------------------	-----------------