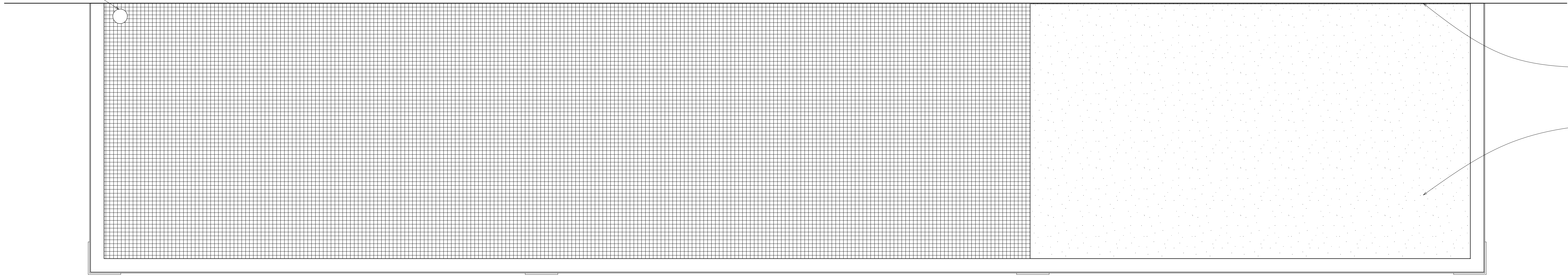


PROPOSED DESIGN FOR TWO HOUSES BESIDE JACK STRAWS CASTLE.
HOUSE I BALCONY PLAN VIEWS.

RAINWATER PIPE TO
PASS THROUGH BALCONY

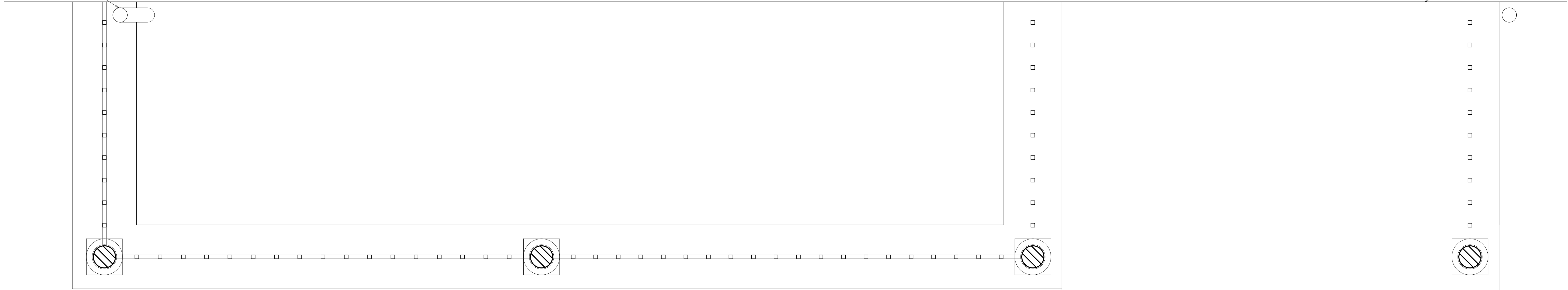


EDGE OF HOUSE

SOLID PANEL FOR
COVER ABOVE PORCH
(NON SLIP)

V I E W A

RAINWATER PIPE TO
BEND ROUND KERBSTONE
AND PASS INTO OPEN AREA



EDGE OF HOUSE

V I E W B



SOLID PANEL FOR
COVER ABOVE PORCH
(NON SLIP)

EDGE OF HOUSE

V I E W C

REVISIONS:
REV A - 08-09-2021 - PLAN VIEW B REVISED TO SUIT CLIENT COMMENTS

QUINLAN TERRY ARCHITECTS LLP
OLD EXCHANGE,
HIGH STREET, DEDHAM,
ESSEX, CO7 6HA

3RD SEPTEMBER 2021

DRAWING No:-

SCALE:- 1:10 @ A0

HOUSE I BALCONY
PLAN VIEWS

1370 / 7 / 2 'A'

1 : 10 @ A0

