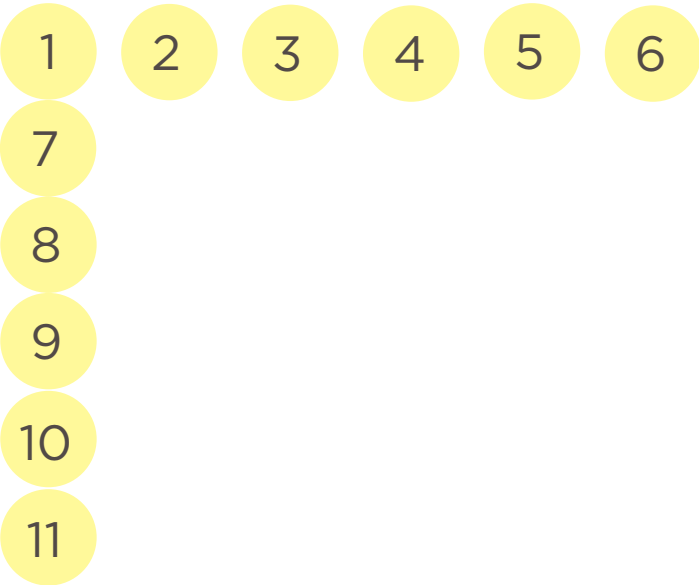


CCTV and Access Point Details Pack

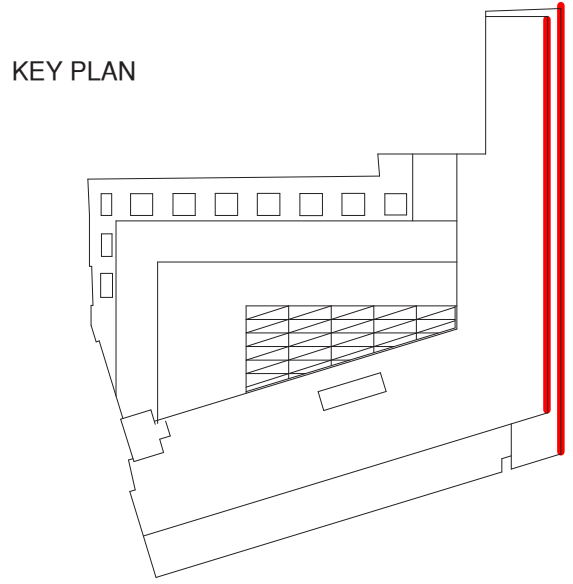
Drawings included:

- CCTV Camera and Access Control Locations
- Camera Type A Details
- Camera Type B Details
- Camera Type C Details
- Access Control Type A Details
- Access Control Type B Details



CCTV Camera and Access Control Location

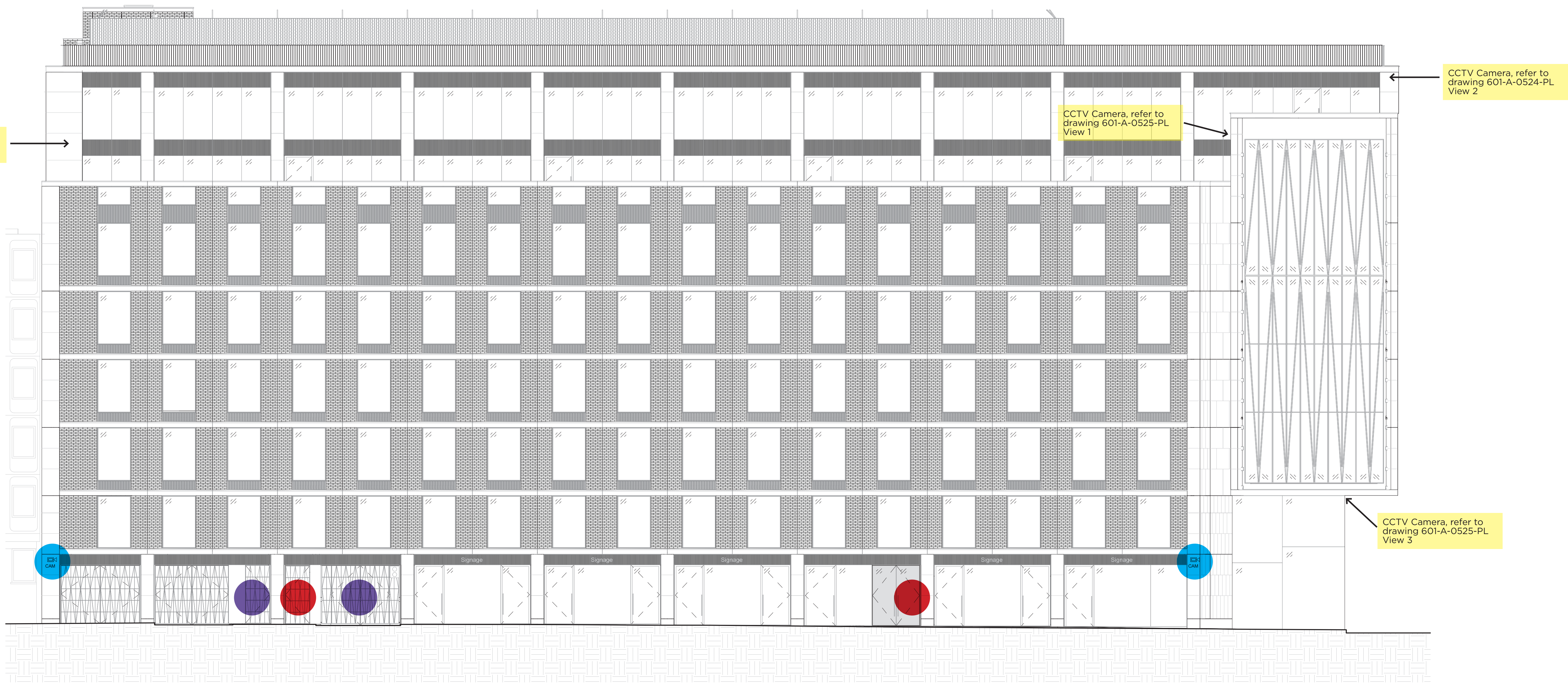
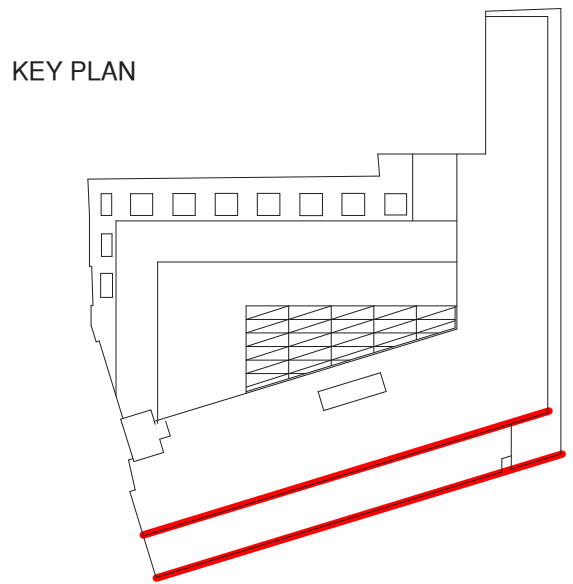
- CCTV Camera Type A
- CCTV Camera Type B
- CCTV Camera Type C
- Access Control Type A
- Access Control Type B



NOTES FOR ALL DRAWINGS: <small>This drawing is to be read in conjunction with the contract documents, including but not limited to all other drawings, specifications and schedules. This drawing shows the design intent only. This is not a fabrication drawing. Do not scale from this drawing. All setting out dimensions shown are to be checked and verified by the contractor on site. All dimensions and levels are subject to a site survey. Any discrepancies found in this drawing are to be reported to be the Architect immediately. Any modifications to these drawings necessary to meet the performance criteria of the specification shall be agreed in writing with the Architect and issued for approval. Please refer to structural engineer's drawings, specifications and schedules for all structural design, size and performance criteria. © Marks Barfield Architects 2021</small>	Rev	Date	by	Description	Key	1	Client Lazari Properties 8 Limited Greater London House Hampstead Road London NW1 7OX United Kingdom Tel +44 20 7388 5444 Fax +44 20 7388 6557	Architect marks barfield architects 50 Bromells Road London SW4 0BG United Kingdom Tel +44 20 7501 0180	Stephenson House, 75 Hampstead Road, London, NW1 2PL				
									Drawing Title Proposed East Elevation CCTV and Access Control Locations				
									Job no 601	Scale (@ A1) 1 : 100	Drawing No A-0520-PL	Revision	Status
									Date 08/24/21	Checked Checker		For Information	

CCTV Camera and Access Control Location

- CCTV Camera Type A
- CCTV Camera Type B
- CCTV Camera Type C
- Access Control Type A
- Access Control Type B

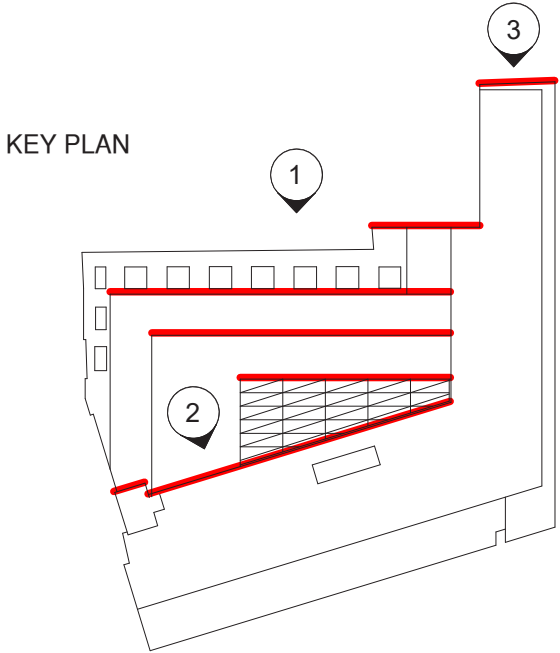


1 Proposed South Elevation (Drummond Street)
SCALE 1 : 100

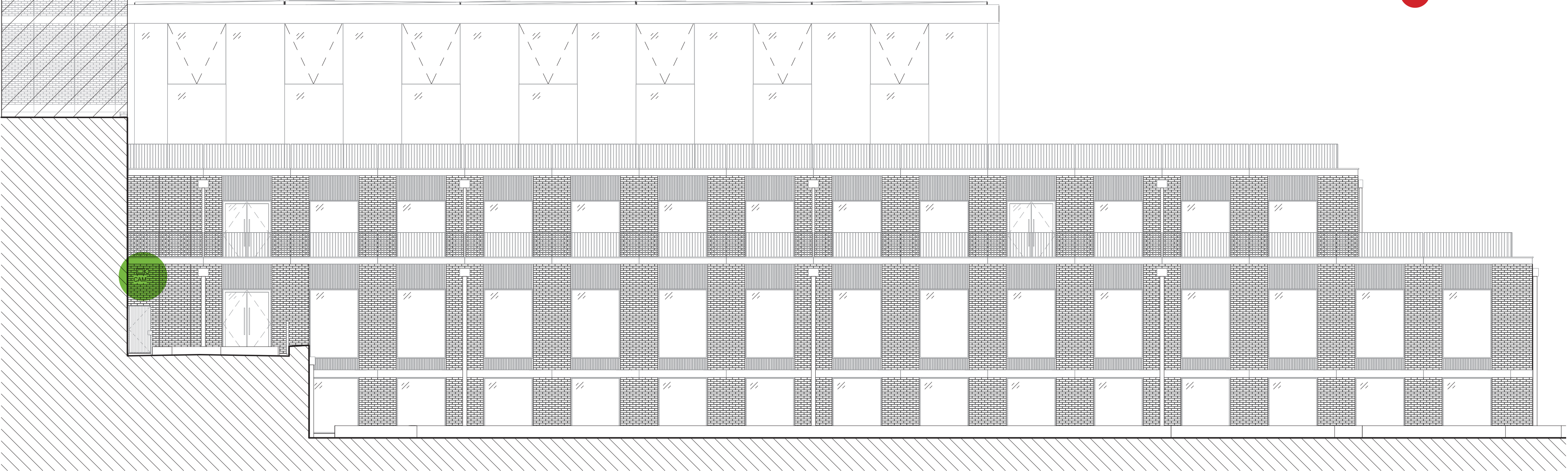
<div>NOTES FOR ALL DRAWINGS:</div> <div>This drawing is to be read in conjunction with the contract documents, including but not limited to all other drawings, specifications and schedules. This drawing shows the design intent only. This is not a fabrication drawing. Do not scale from this drawing. All setting out dimensions shown are to be checked and verified by the contractor on site. All dimensions and levels are subject to a site survey. Any discrepancies found in this drawing are to be reported to be the Architect immediately. Any modifications to these drawings necessary to meet the performance criteria of the specification shall be agreed in writing with the Architect and issued for approval. Please refer to structural engineer's drawings, specifications and schedules for all structural design, size and performance criteria.</div> <div>© Marks Barfield Architects 2021</div>	Rev	Date	by	Description	Key	<div>2</div>	<div>Client</div> <div>Lazari Properties 8 Limited</div> <div>Greater London House Hampstead Road London NW1 7OX United Kingdom</div> <div>Tel +44 20 7388 5444 Fax +44 20 7388 6557</div>	<div>Architect</div> <div>marks barfield architects</div> <div>50 Bromells Road London SW4 0BG United Kingdom</div> <div>Tel +44 20 7501 0180</div>	Stephenson House, 75 Hampstead Road, London, NW1 2PL				
	Drawing Title												
	Proposed South Elevation CCTV and Access Control Locations												
	Job no	Scale (@ A1)	Drawing No	Revision	Status								
	601	1 : 100	A-0521-PL		For Information								
	Date	Checked											
	11/04/21	Checker											

CCTV Camera and Access Control Location

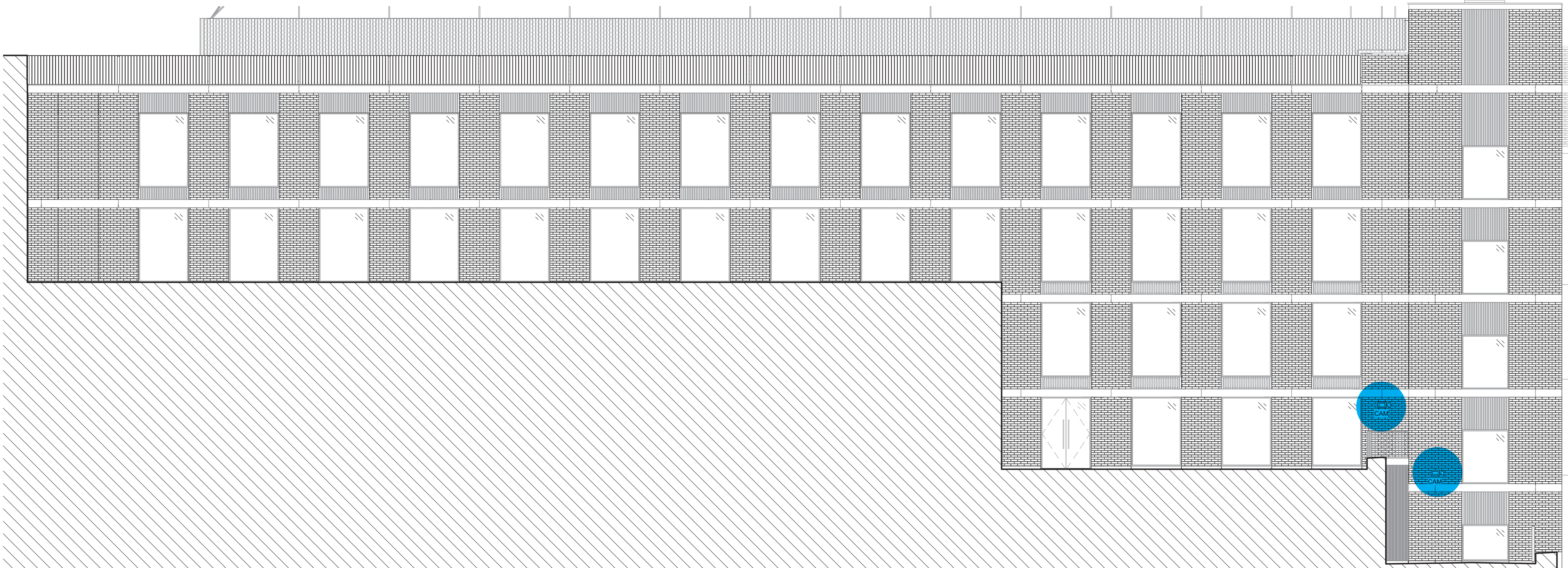
- CCTV Camera Type A
- CCTV Camera Type B
- CCTV Camera Type C
- Access Control Type A
- Access Control Type B



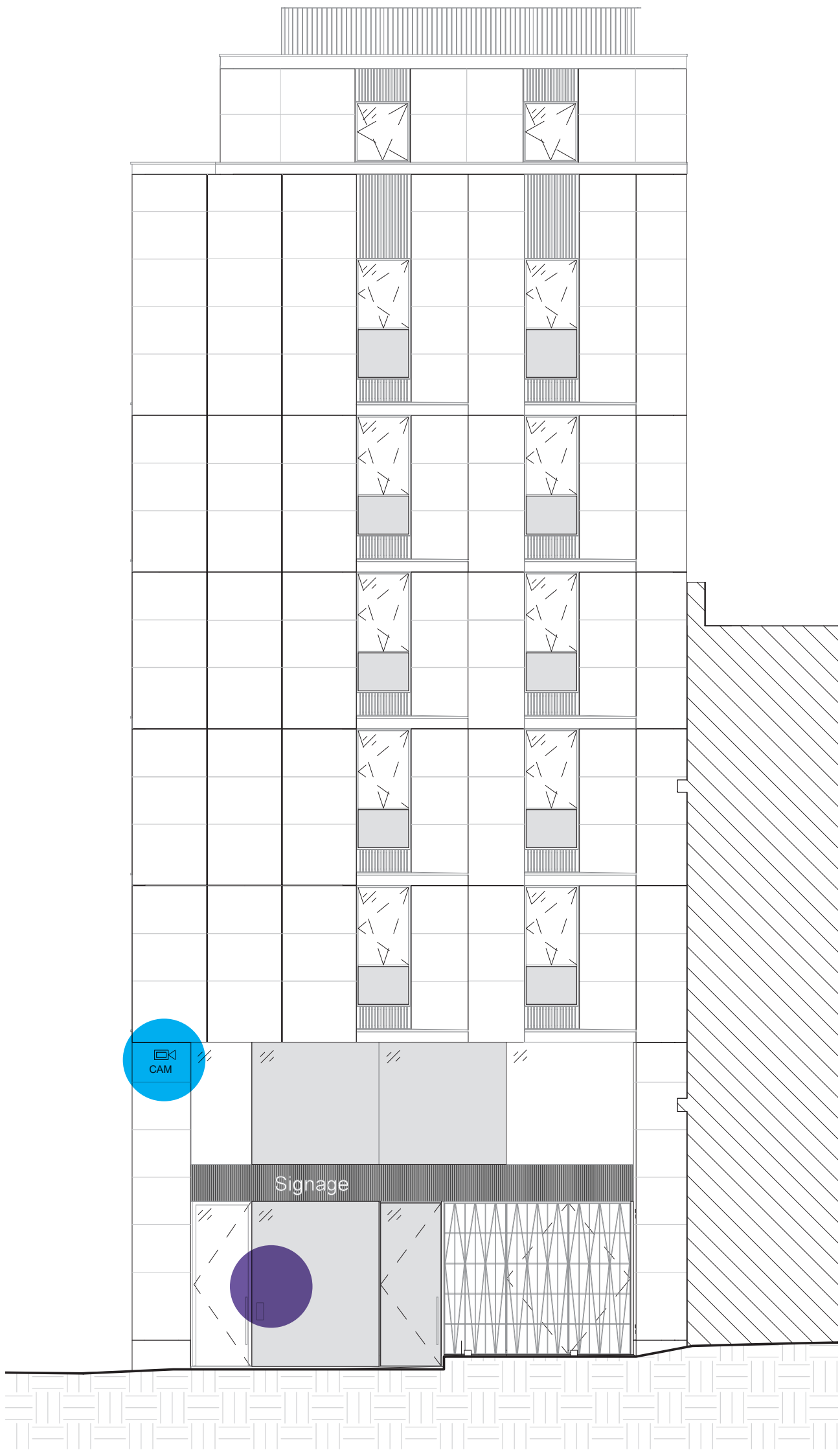
1 Elevation - North 2
SCALE 1 : 100



2 Elevation - North 3a
SCALE 1 : 100



3 Elevation - North 1 (William Road)
SCALE 1 : 100



NOTES FOR ALL DRAWINGS:
This drawing is to be read in conjunction with the contract documents, including but not limited to all other drawings, specifications and schedules. This drawing shows the design intent only. This is not a fabrication drawing. Do not scale from this drawing. All setting out dimensions shown are to be checked and verified by the contractor on site. All dimensions and levels are subject to a site survey. Any discrepancies found in this drawing are to be reported to be the Architect immediately. Any modifications to these drawings necessary to meet the performance criteria of the specification shall be agreed in writing with the Architect and issued for approval. Please refer to structural engineer's drawings, specifications and schedules for all structural design, size and performance criteria.
© Marks Barfield Architects 2021

Rev	Date	by	Description

Key

3

Client
Lazari Properties 8 Limited

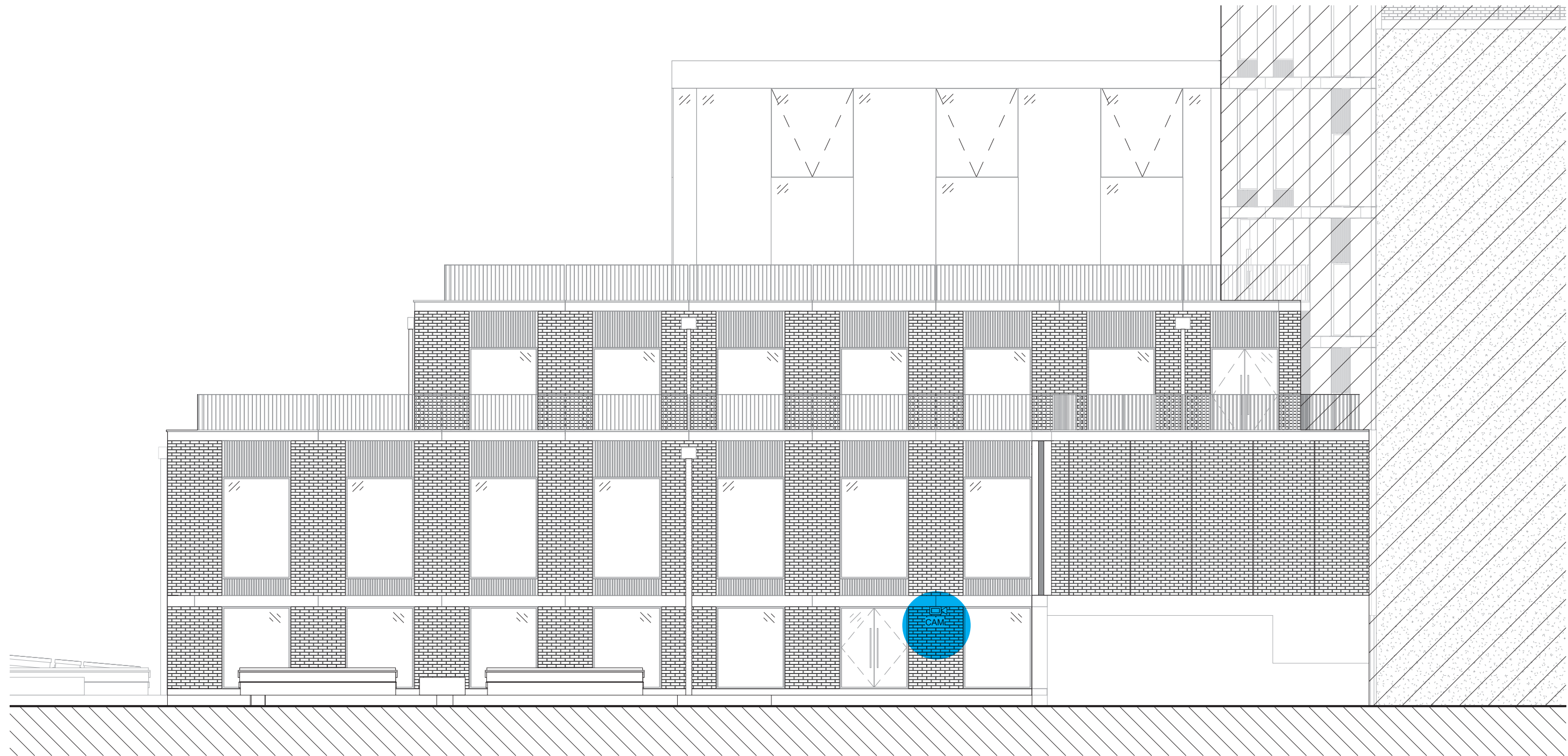
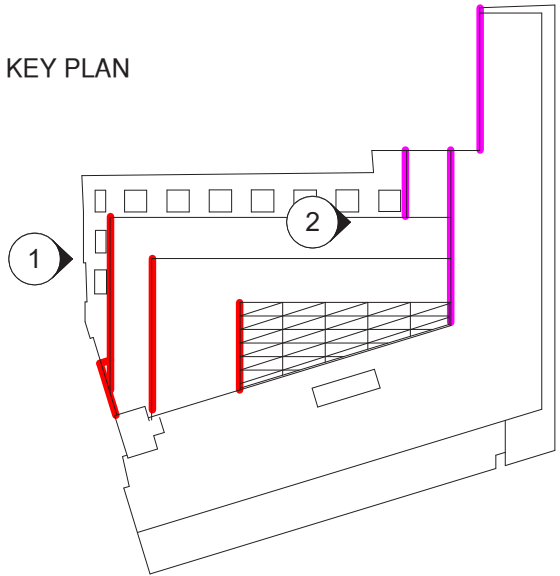
Greater London House
Hampstead Road
London NW1 7OX
United Kingdom
Tel +44 20 7388 5444
Fax +44 20 7388 6557

Architect
marks barfield architects

50 Bromells Road
London SW4 0BG
United Kingdom
Tel +44 20 7501 0180

Stephenson House, 75 Hampstead Road, London, NW1 2PL					
Drawing Title Proposed North Elevation CCTV and Access Control Locations					
Job no 601	Scale (@ A1) 1 : 100	Drawing No A-0522-PL	Revision	Status	For Information
Date 11/04/21	Checked Checker				

- CCTV Camera Type A
- CCTV Camera Type B
- CCTV Camera Type C
- Access Control Type A
- Access Control Type B



1 **Office Facade - West 1**
SCALE 1 : 100



2 **Facade (Residential + Office) - West 2**
SCALE 1 : 100

NOTES FOR ALL DRAWINGS:

This drawing is to be read in conjunction with the contract documents, including but not limited to all other drawings, specifications and schedules. This drawing shows the design intent only. This is not a fabrication drawing. Do not scale from this drawing. All setting out dimensions shown are to be checked and verified by the contractor on site. All dimensions and levels are subject to a site survey. Any discrepancies found in this drawing are to be reported to be the Architect immediately. Any modifications to these drawings necessary to meet the performance criteria of the specification shall be agreed in writing with the Architect and issued for approval. Please refer to structural engineer's drawings, specifications and schedules for all structural design, size and performance criteria.
© Marks Barfield Architects 2021

Rev	Date	by	Description

Key

4

Client
Lazari Properties 8 Limited

Greater London House
Hampstead Road
London NW1 7QX
United Kingdom
Tel +44 20 7388 5444
Fax +44 20 7388 6557

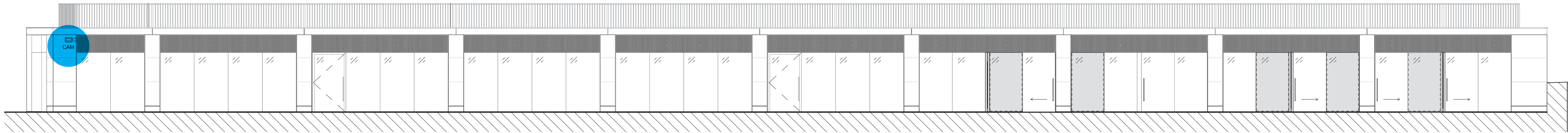
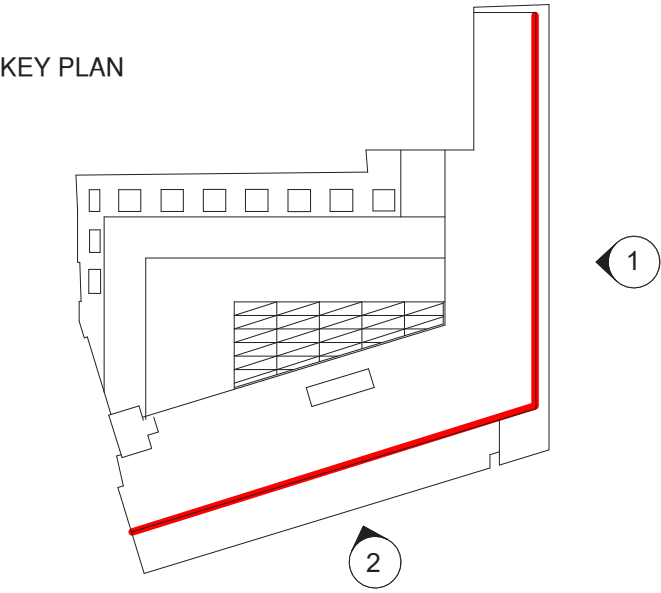
Architect
marks barfield architects

50 Bromells Road
London SW4 0BG
United Kingdom
Tel +44 20 7501 0180

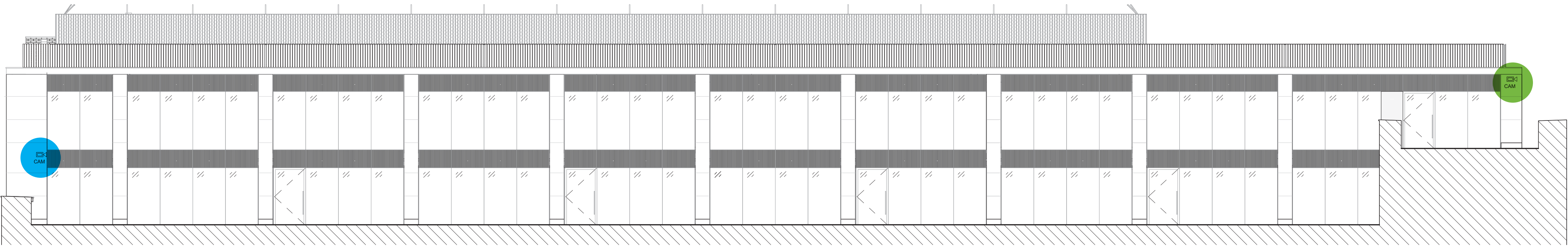
Stephenson House, 75 Hampstead Road, London, NW1 2PL

Drawing Title
Proposed West Elevation CCTV and Access Control Locations

Job no	Scale (@ A1)	Drawing No	Revision	Status
601	1 : 100	A-0523-PL		For Information
Date	Checked			
11/04/21	Checker			



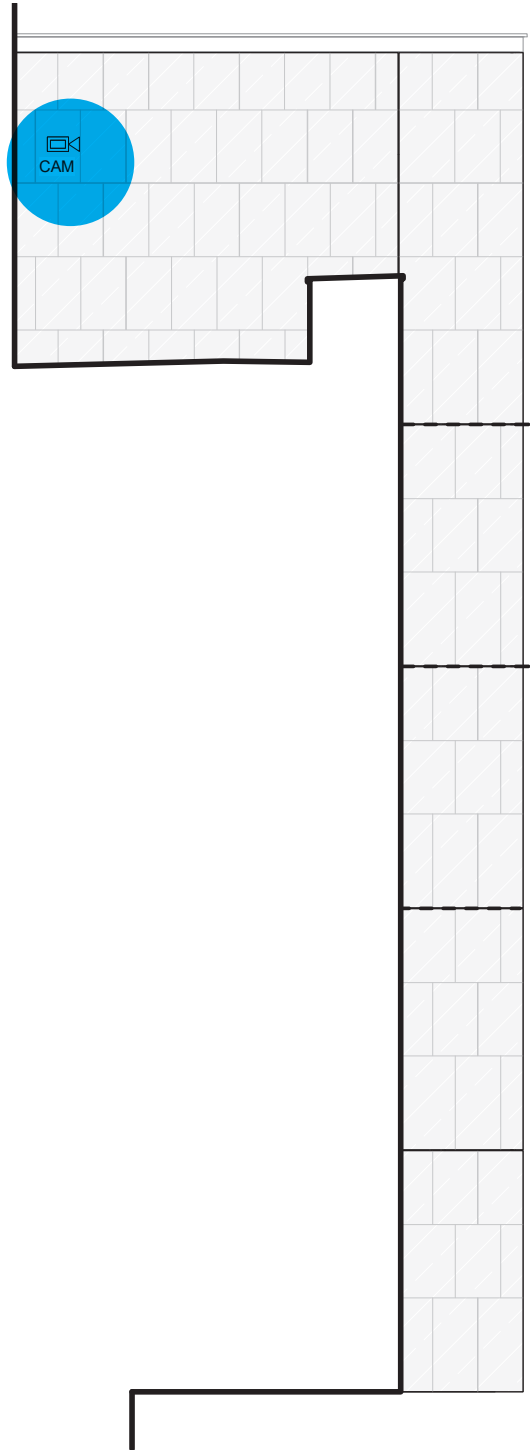
1 Top floor offices and residential - Hampstead Road
SCALE 1 : 100



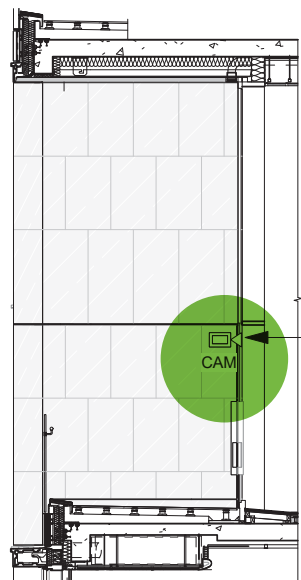
2 Top floor offices - Drummond Street
SCALE 1 : 100

- CCTV Camera Type A
- CCTV Camera Type B
- CCTV Camera Type C
- Access Control Type A
- Access Control Type B

NOTES FOR ALL DRAWINGS: <small>This drawing is to be read in conjunction with the contract documents, including but not limited to all other drawings, specifications and schedules. This drawing shows the design intent only. This is not a fabrication drawing. Do not scale from this drawing. All setting out dimensions shown are to be checked and verified by the contractor on site. All dimensions and levels are subject to a site survey. Any discrepancies found in this drawing are to be reported to be the Architect immediately. Any modifications to these drawings necessary to meet the performance criteria of the specification shall be agreed in writing with the Architect and issued for approval. Please refer to structural engineer's drawings, specifications and schedules for all structural design, size and performance criteria. © Marks Barfield Architects 2021</small>	Rev	Date	by	Description	Key	5	Client Lazari Properties 8 Limited Greater London House Hampstead Road London NW1 7QX United Kingdom Tel +44 20 7388 5444 Fax +44 20 7388 6557	Architect marks barfield architects 50 Bromells Road London SW4 0BG United Kingdom Tel +44 20 7501 0180	Stephenson House, 75 Hampstead Road, London, NW1 2PL		
									Drawing Title Proposed East and South Setback Elevation CCTV and Access		
									Control Locations		
									Job no 601	Scale (@ A1) 1 : 100	Drawing No A-0524-PL
									Date 11/04/21	Checked Checker	Revision Status For Information

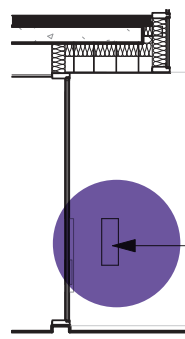


1 **Lantern East Elevation**
SCALE 1 : 100



Camera location for L2,L3
and L4 pocket garden
terrace

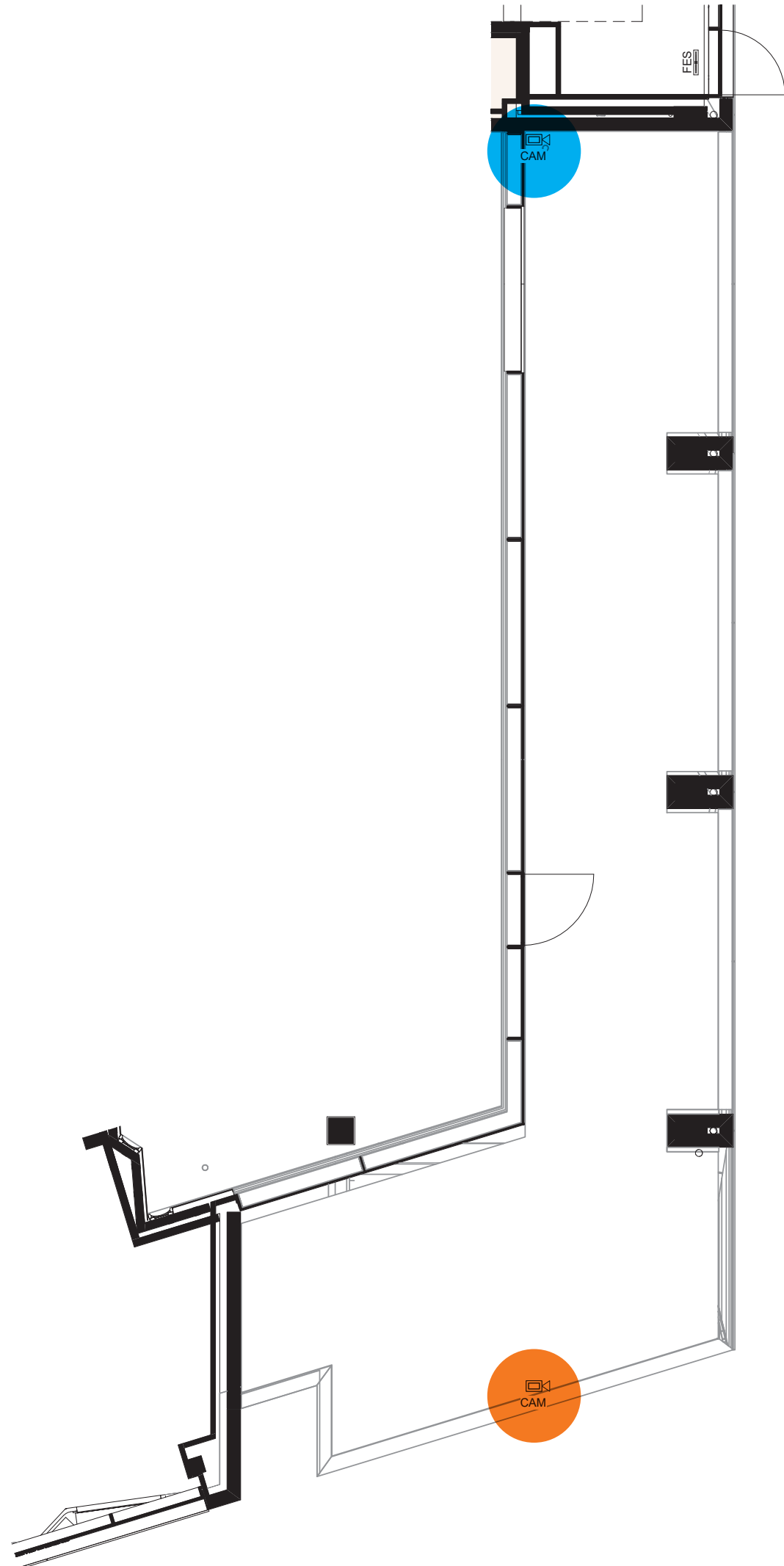
2 **Typical Pocket Garden Side Elevation**
SCALE 1 : 100



Residential
Intercom

4 **Typical Residential Entrance Side Elevation**
SCALE 1 : 100

- CCTV Camera Type A
- CCTV Camera Type B
- CCTV Camera Type C
- Access Control Type A
- Access Control Type B



3 **Entrance Reflected Ceiling Plan**
SCALE 1 : 100

NOTES FOR ALL DRAWINGS:

This drawing is to be read in conjunction with the contract documents, including but not limited to all other drawings, specifications and schedules. This drawing shows the design intent only. This is not a fabrication drawing. Do not scale from this drawing. All setting out dimensions shown are to be checked and verified by the contractor on site. All dimensions and levels are subject to a site survey. Any discrepancies found in this drawing are to be reported to be the Architect immediately. Any modifications to these drawings necessary to meet the performance criteria of the specification shall be agreed in writing with the Architect and issued for approval. Please refer to structural engineer's drawings, specifications and schedules for all structural design, size and performance criteria.

© Marks Barfield Architects 2021

Rev	Date	by	Description

Key

6

Client
Lazari Properties 8 Limited

Greater London House
Hampstead Road
London NW1 7QX
United Kingdom
Tel +44 20 7388 5444
Fax +44 20 7388 6557

Architect
marks barfield architects

50 Bromells Road
London SW4 0BG
United Kingdom
Tel +44 20 7501 0180

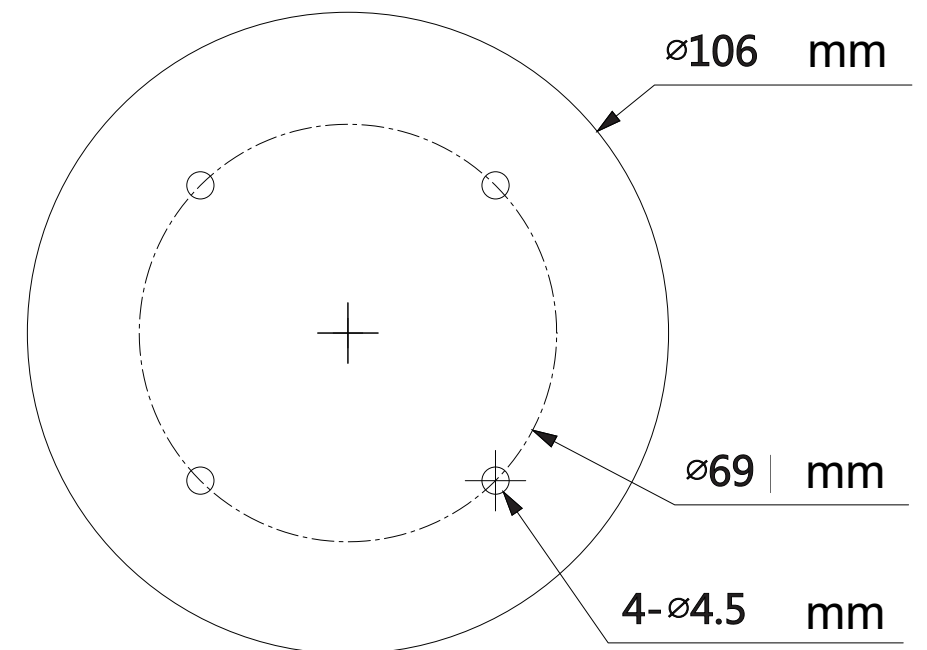
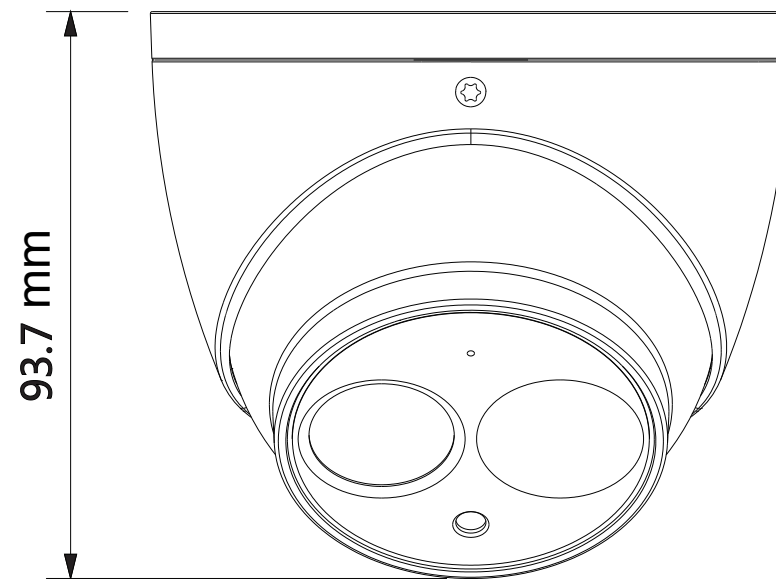
Stephenson House, 75 Hampstead Road, London, NW1 2PL

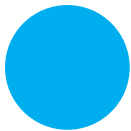
Drawing Title
Typical Side Elevation and Entrance Reflected Ceiling Plan

Job no	Scale (@ A1)	Drawing No	Revision	Status
601	1 : 100	A-0525-PL		For Information
Date	Checked			
11/04/21	Checker			

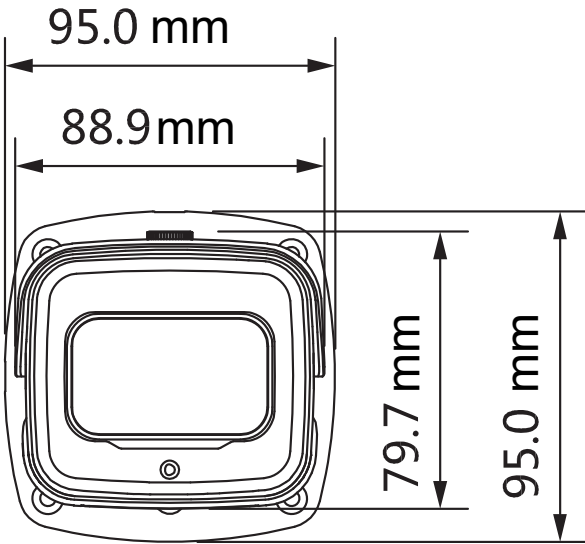
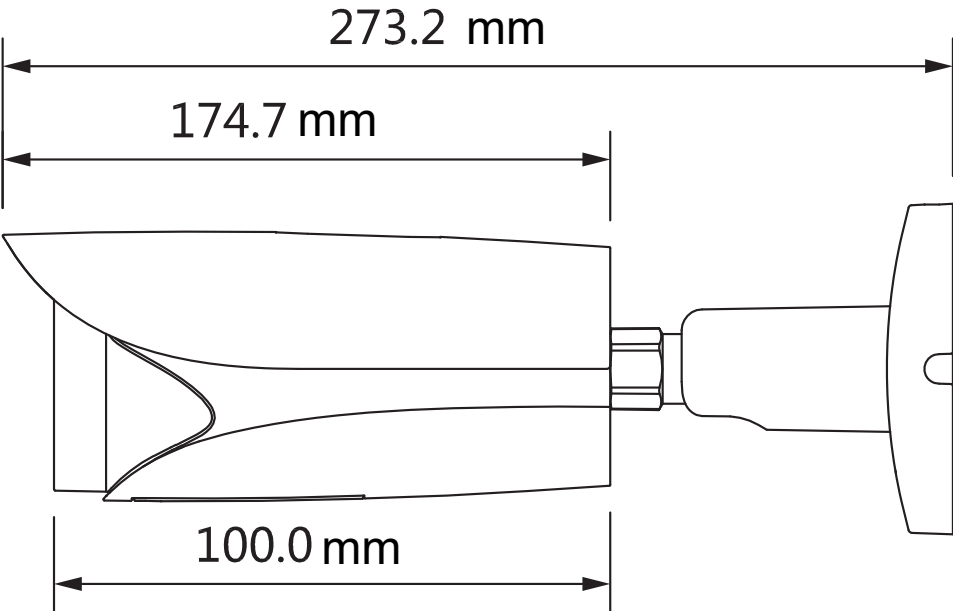


Camera Type: A



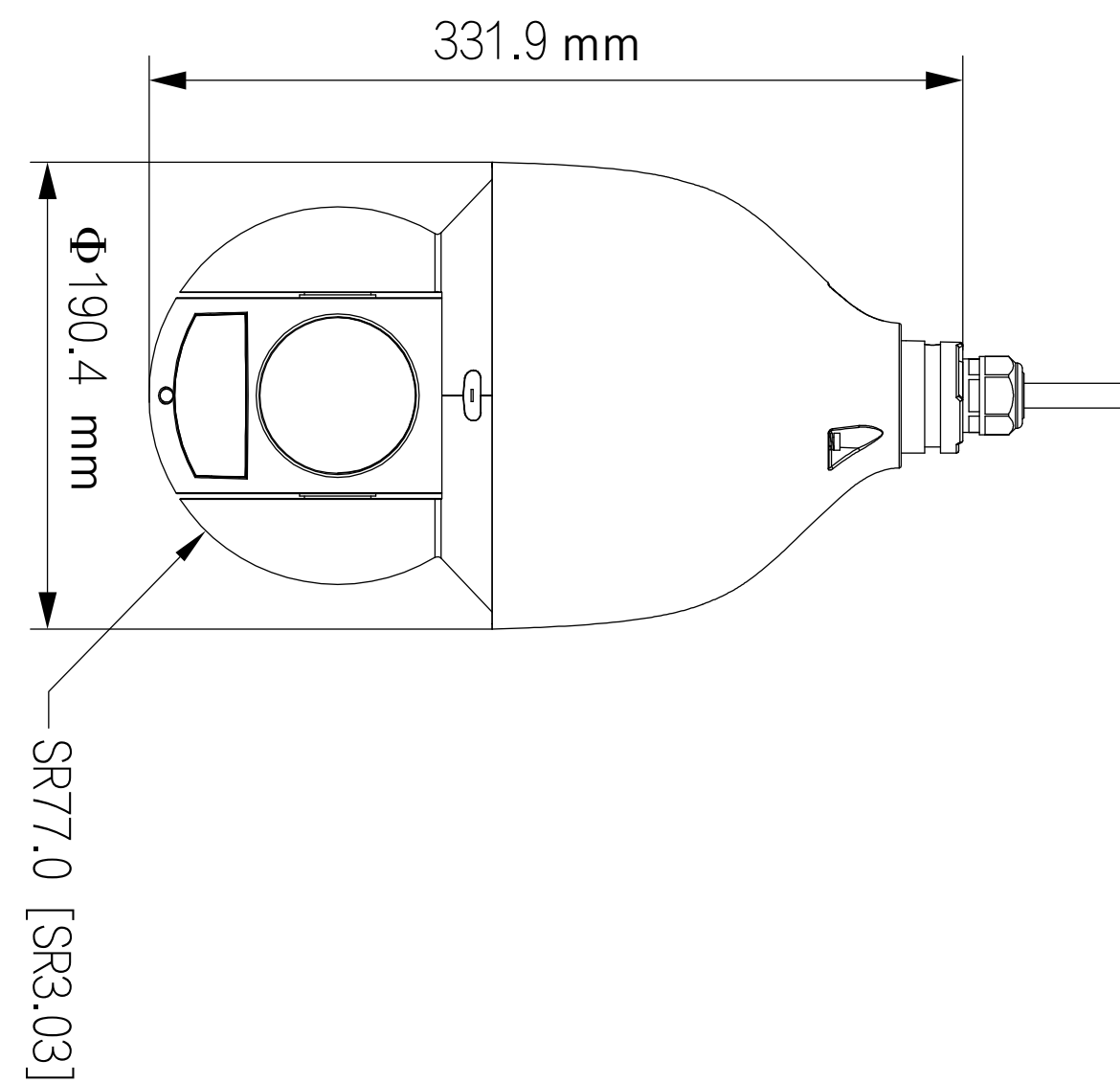
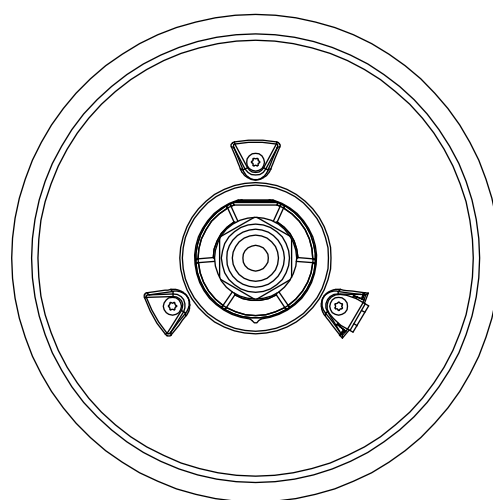


Camera Type: B



Camera Type: C

9



Access Control Type A

10



DS1060

Entry - VR Panel

System specifications

Maximum total tokens/users - Standalone	100 card packs (up to 5,000 tokens/users)
Power over Ethernet (PoE)	Yes - IEEE 802.3af class 0
Ethernet bandwidth requirement	1Mb/s multicast per panel during call
Panels per system	100
TCP/IP ethernet extension limit	100m/328ft
Cable type	CAT5
Token compatibility	Paxton, EM4100/02, MIFARE®, MIFARE® Classic, MIFARE® DESFire® EV1, MIFARE Plus®, MIFARE Ultralight®, MIFARE Ultralight C®, MIFARE Mini®, HID® Prox (activation required)

Features

Audio system	Two way
Camera system	Full colour
Back-lit LCD	Yes
PIN/Code entry	Yes - only in conjunction with Net2 software & Paxton10
Bluetooth® compatibility	Yes - only in conjunction with Paxton10
Bluetooth modes	'Token mode' - (Present credential to reader) 'Touch to enter' - (Smart credential or Hands free Keyfob in pocket) 'Longe range' - (Smart credential or Hands free Keyfob (Up to 10m)) 'Bluetooth off'
Proximity entry	Yes
Vandal resistant	Yes
IDC connector	Optional
Material	316L Stainless Steel Marine Grade

Environment

Operating temperature	-20°C - +50°C -4°F - +122°F
Moisture resistance	IP55
Vandal Resistance	IK10

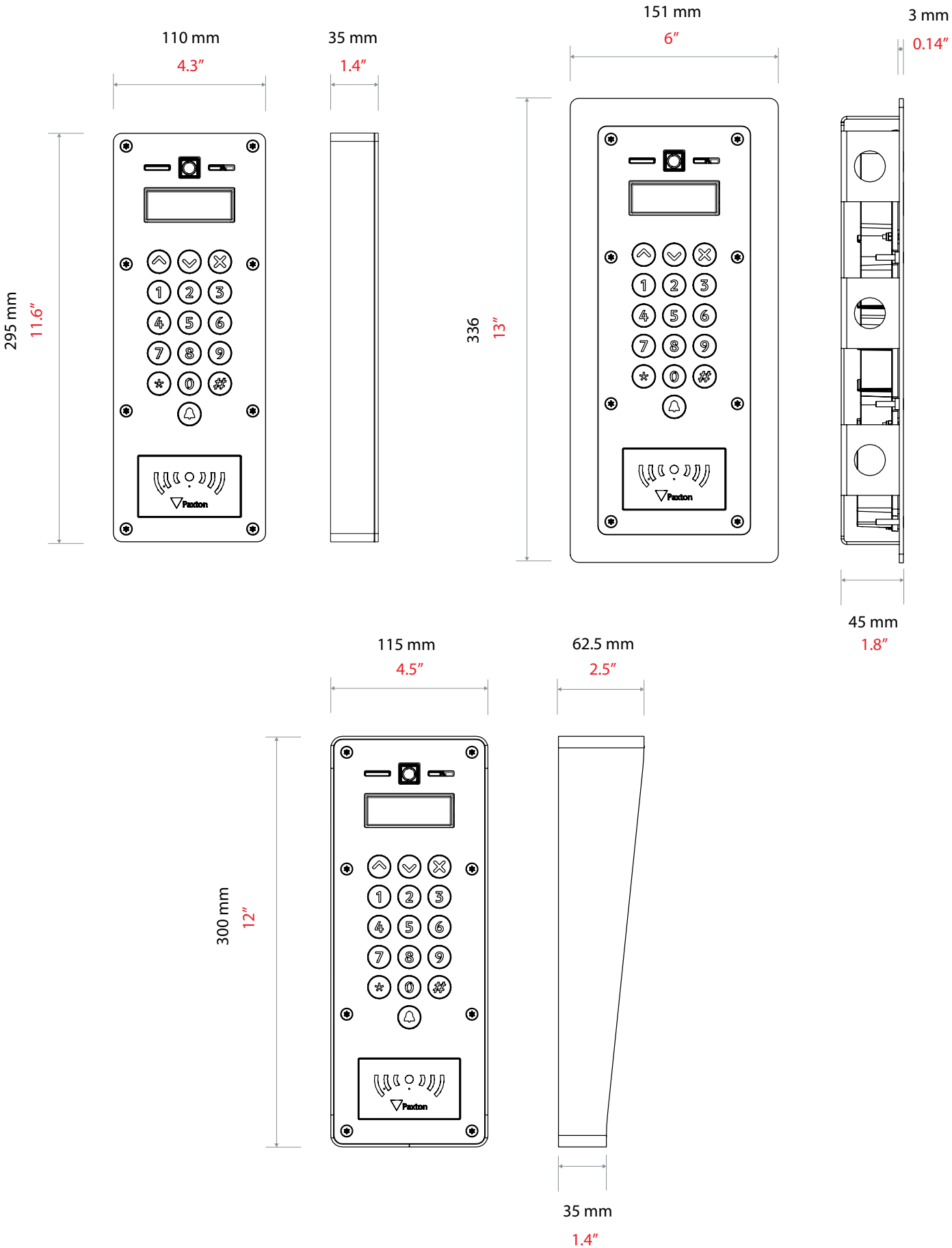


The Entry panel is a robust door entry panel incorporating both door entry and access control functions. It is powered using power over Ethernet (PoE) and communicates with the other elements of the system using IPv6, providing 'plug and play' installation. Each panel is associated with a Entry control unit which is the interface to the door hardware.

The panel is equipped with a keypad and a proximity token reader. A resident can use either the keypad or a token to gain entry. Installers gain access to the menu options using an engineer code or an engineer token.

Net2 or Paxton10 software can be used to administer the access control functions.

Decide how the units are to be connected. You can either run your own wired network or (with the owner's permission) share the buildings existing data network. If using the owners network, the system uses IPv6 protocol and PoE (Power over Ethernet) so the network must support this switch type.



Access Control Type B

Paxton10 Slimline Reader

Overview

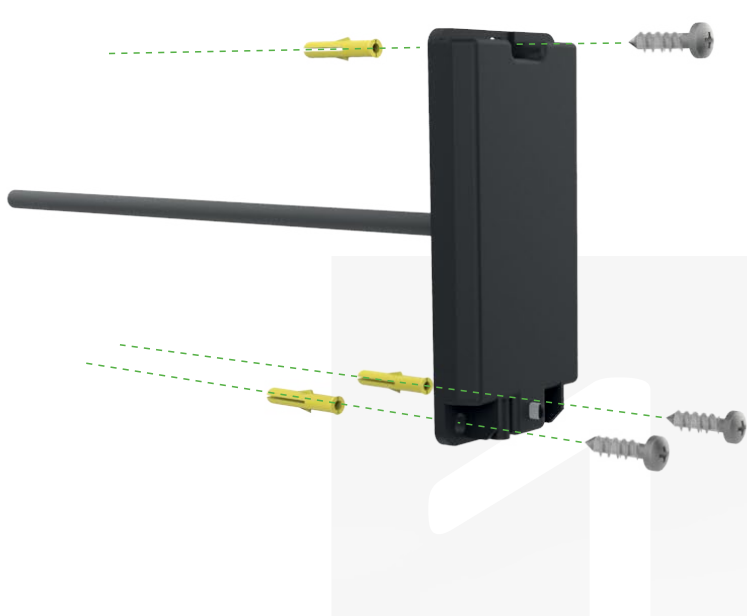
Continuing Paxton’s long-standing tradition, offering a wide variety of reader types to suit all applications, the Slimline Reader has been designed to blend seamlessly into any interior style whilst offering ultimate installation simplicity via its 5m/ 16ft encapsulated cable.

The Slimline Reader, in its low profile compact package still provides all the functions you would expect from a Paxton10 reader. It supports all leading token types, including HID Prox®, MIFARE®, Paxton and EM, as well as offering Bluetooth for communication with long range or handsfree credentials and mobile telephones via the Paxton app.

Features

- Multi-format reading technology offering compatibility with Paxton, MIFARE®, HID Prox®, EM and more
- Low power sleep mode with capacitive wake-up
- Built in Bluetooth Low Energy support to allow communication to mobile and wearable devices
- Simple 2-part construction with encapsulated 5m/16ft cable
- IP67 rated
- Simple 4 wire installation

Paxton10



Specifications



System

Token compatibility	Paxton, EM4100/02, Sony ®, FeliCa Lite-S
	MIFARE® Classic, MIFARE® DESFire® EV1/EV2
	MIFARE® Plus, MIFARE Ultralight®
	MIFARE Ultralight C®, MIFARE Mini®, NFC®,
	Hitag2, HID® Prox 125kHz low frequency



Electrical

Power consumption	1W (Max)
Operating voltage	12V
Current Draw	40mA (Quiescent)
	100mA (Max)



Communication

RFID frequency	125kHz & 13.56MHz
Data connection	RS485/Paxton10 protocol
Bluetooth®	2.4 GHz



Hardware

Dimensions (W x H x D)	49mm x 104mm x 17.2mm
Cable Type	22AWG, 4 core twisted pair
Cable Length	5m
Maximum cable extension length (Controller > Reader)	100m
Sound	Piezo Buzzer
Colour	Black
Housing material	PC+ABS
Warranty	Paxton 5 year



Environment

Operating temperature	-35°C - +66°C
IP Rating	IP67
IK Rating	IK10
Mounting	Surface only