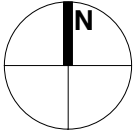
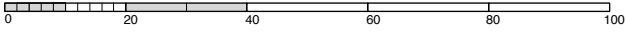


PLEASE USE SCALE BAR TO TAKE MEASUREMENTS WHEN READING FROM PDFS



Lisa Shell architects

EG2 Norway Wharf, 24 Harford Road, N1 5QT
T. 020 7275 7773 E. mail@lisashellarchitects.co.uk

www.lisashellarchitects.co.uk

Chartered Lisa Shell RIBA Registered in England No. 0000192
Registration No. 15343096.00000174-1962.000.0004727

**5A PRINCE ARTHUR ROAD,
LONDON NW3 6AX**

LOCATION PLAN PAR/LO/001/A

1 : 1250 @ A4
REFER ALL DISCREPANCIES TO ARCHITECT

REVISIONS/ ISSUE

31/08/21
ISSUE TO CLIENT
FOR COMMENT/ INFO

23/11/21
ISSUE TO TREE OFFICER
FOR COMMENT/ INFO

19/12/21
ISSUE TO PLANNING
FOR APPROVAL A

SITE AREA 375M2

 **KEY**
PROPOSED DEVELOPMENT SITE

