

**DO NOT SCALE**

THE CONTRACTOR IS TO CHECK AND VERIFY ALL BUILDING AND SITE DIMENSIONS, LEVELS AND SEWER INVERT LEVELS AT CONNECTION POINTS BEFORE WORK STARTS.

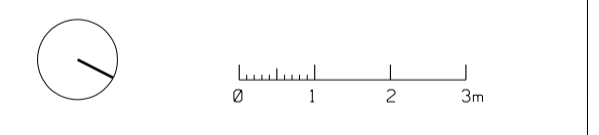
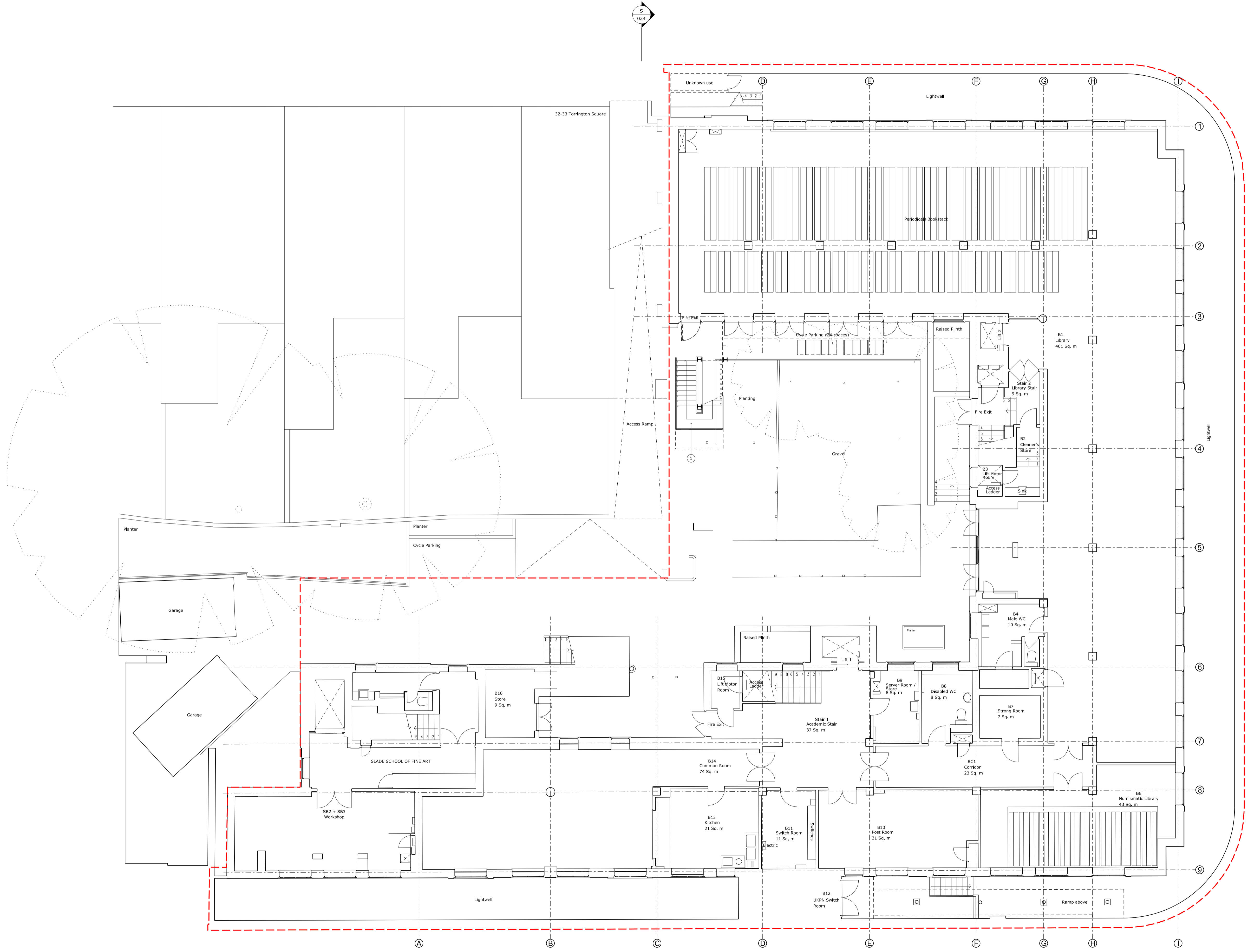
THIS DRAWING IS TO BE READ AND CHECKED IN CONJUNCTION WITH ENGINEERS AND OTHER SPECIALIST DRAWINGS.

THE DRAWING AND THE WORKS DEPICTED ARE THE COPYRIGHT OF HAWORTH TOMPKINS LTD AND MAY NOT BE REPRODUCED EXCEPT BY WRITTEN PERMISSION.

**NOTES**

--- Site Boundary

- 1 Existing metal escape stair to be removed and replaced with new steel escape stair with galvanised finish to treads and risers and PPC finish to structural elements, stringers and balustrade railing.



REV	DATE	DESCRIPTION
-	15/12/21	Planning

**HaworthTompkins**  
33 Greenwood Place, London NW5 1LB  
+44 (0)20 7250 3225, www.haworthtompkins.com

JOB 1811: WARBURG INSTITUTE  
DRG Lower Ground Floor Plan  
Escape Stair  
Proposed

DRG No 1811-HT-P-ES-013 REV -

SCALE 1:100 at A1 DATE Dec 2021

DRAWN BY EF INSPECTED BY NH

DRAWING STATUS **PLANNING**