

DWG
3090
1 : 50
Proposed Section 2a-2a

DWG
3090
1 : 50
Proposed Section 2b-2b

100mm @ A1 (50mm @ A3)

- 1 This drawing is to be read in conjunction with all relevant architects, engineers and specialists drawings and specifications.
- 2 Do not scale from this drawing in either paper or digital form. Use written dimensions only. To check drawing has been printed to the intended scale the above bar should be 100mm
- 3 Any setting out dimensions shown in red are to be confirmed by the architect. All dimensions are to be checked by the contractor against site dimensions prior to fabrication /commencement of work on site. Beams and columns are to be centred on grid unless noted otherwise. Setting out of steelwork is shown to the centre of symmetric sections and to the back face of PFCs and RSAs.

Proposed Steel Cols

Ref	Type
C1	UC203x203x71

Proposed Steel Beams

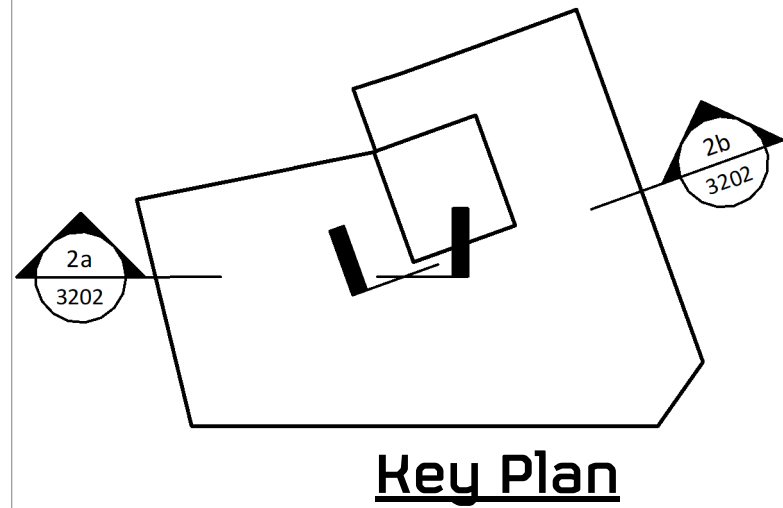
Ref	Type
B1	UC203x203x52
B5	UC254x254x107
B6	200wd x 150dp Fabricated Box Section. 25mm webs & 40mm flanges
B7	UC203x203x86

Proposed Floors

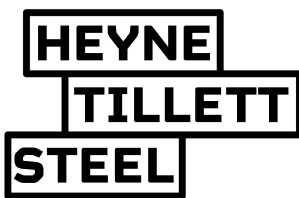
Ref	Description
1	150 thk RC slab
2	RC slab infill

Legend

	Proposed RC structure
	Proposed WRC structure
	Proposed Steel Framing
	Red dimension TBC by architect
	MC padstone - size TBC
	Connection Strengthening
	C Crank
	S Splice Break
	M Moment connection
	TB Thermal Break
	B1 [25mm] Pre-camber
	BR Break in beam



Rev	Date	By	Eng	Amendment
P2	13.10.21	LG	GW	Revised Stage 3 Issue
P1	03.09.21	JMD	GW	STAGE 3 ISSUE



STRUCTURAL &
CIVIL ENGINEERS

<http://hts.uk.com/>

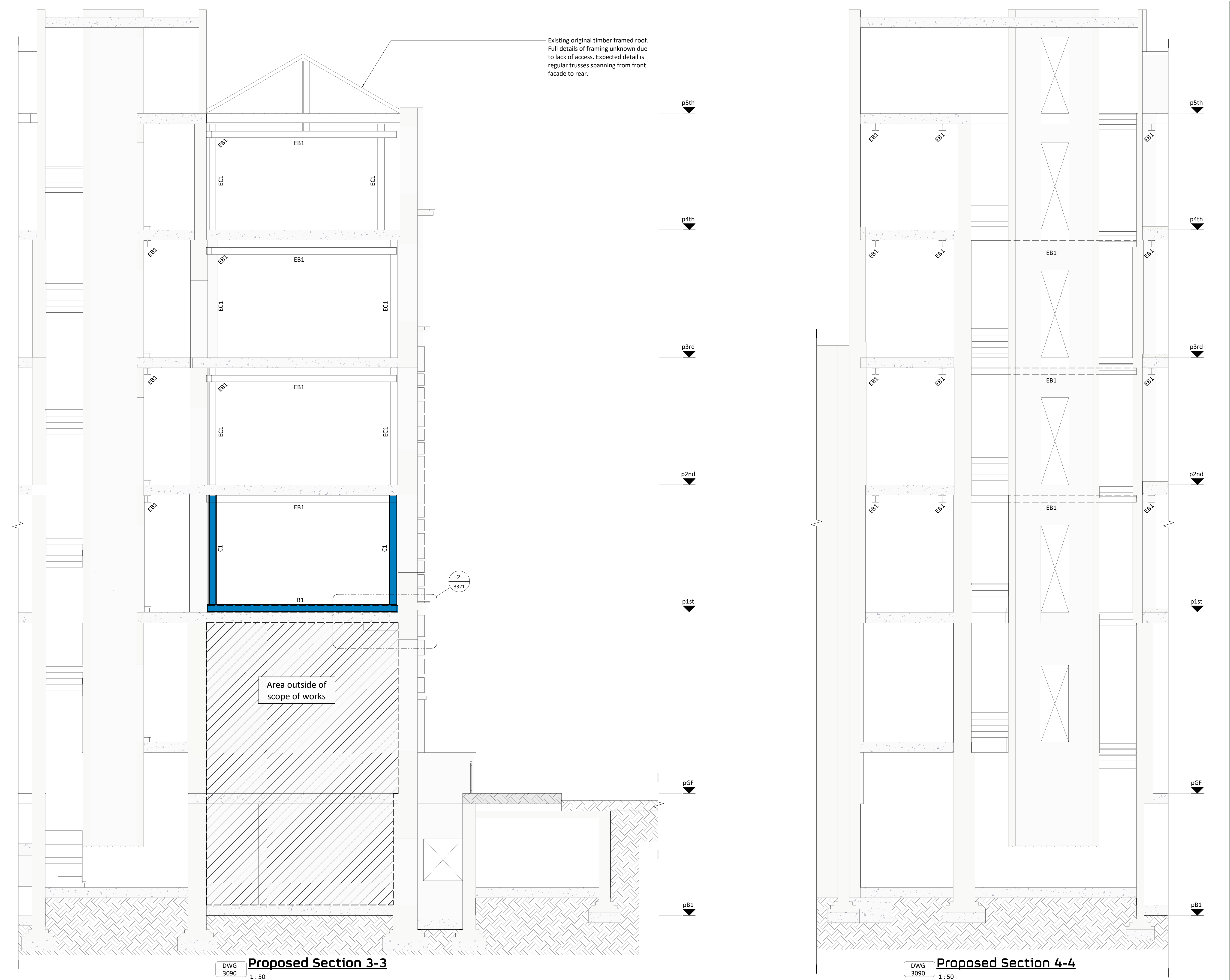
Job Name
Norfolk House
Southampton Place, 13
WC1A 2AL

Drawing Title
Proposed Sections - Sheet 2

Purpose of Issue **Stage 3** Scale at A1 **As indicated**

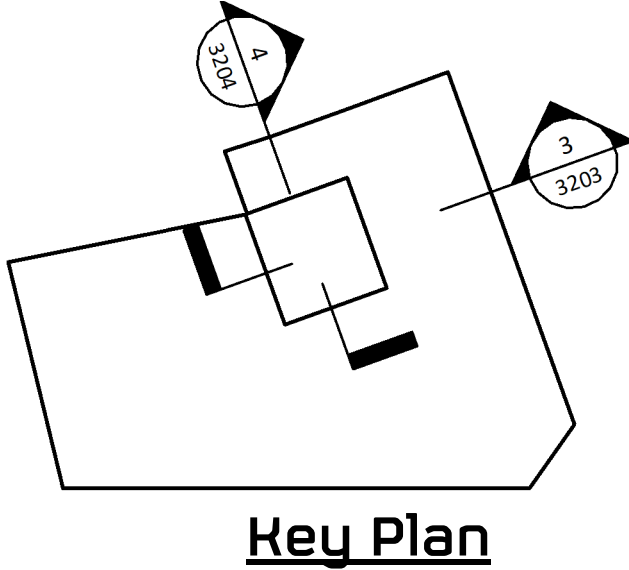
Drg No **2554-HTS-XX-ZZ-DR-S-3202**

HTS Job No **S2** Suitability Rev **P2**



100mm @ A1 (50mm @ A3)	
1 This drawing is to be read in conjunction with all relevant architects, engineers and specialists drawings and specifications.	
2 Do not scale from this drawing in either paper or digital form. Use written dimensions only. To check drawing has been printed to the intended scale the above bar should be 100mm	
3 Any setting out dimensions shown in red are to be confirmed by the architect. All dimensions are to be checked by the contractor against site dimensions prior to fabrication /commencement of work on site. Beams and columns are to be centred on grid unless noted otherwise. Setting out of steelwork is shown to the centre of symmetric sections and to the back face of PFCs and RSAs.	
Proposed Steel Cols	
Ref	Type
C1	UC203x203x71
Proposed Steel Beams	
Ref	Type
B1	UC203x203x52
B5	UC254x254x107
B6	200wd x 150dp Fabricated Box Section. 25mm webs & 40mm flanges
B7	UC203x203x86
Proposed Floors	
Ref	Description
1	150 thk RC slab
2	RC slab infill

Legend	
	Proposed RC structure
	Proposed WRC structure
	Proposed Steel Framing
	Red dimension TBC by architect
	MC padstone - size TBC
	ST Connection Strengthening
	C Crank
	S Splice
	M Moment connection
	TB Thermal Break
	B1 [25mm] Pre-camber
	BR Break in beam



P2	13.10.21	LG	GW	Revised Stage 3 Issue
P1	03.09.21	JMD	GW	STAGE 3 ISSUE
Rev	Date	By	Eng	Amendment

**HEYNE
TILLET
STEEL**

STRUCTURAL &
CIVIL ENGINEERS

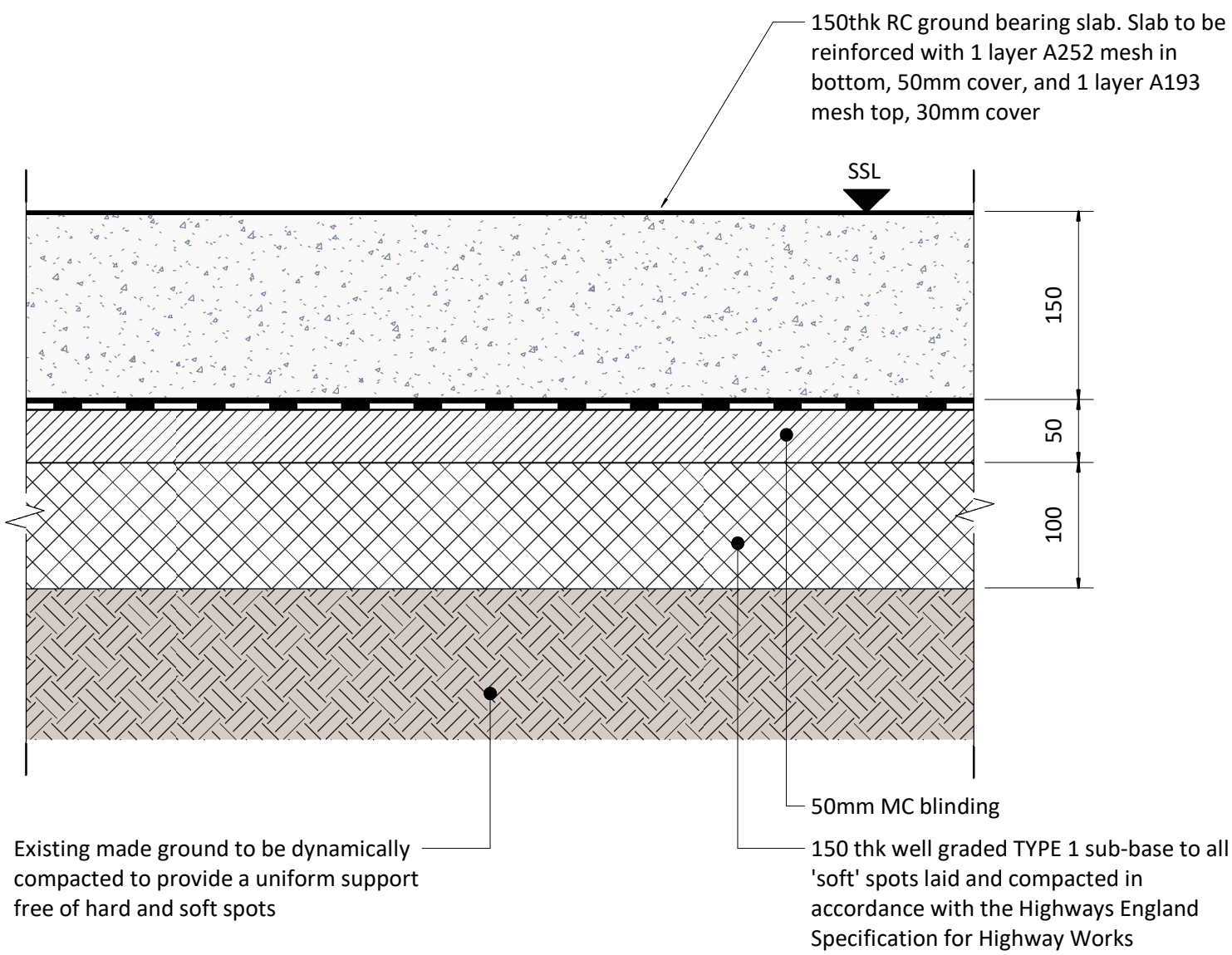
<http://hts.uk.com/>

Job Name
Norfolk House
Southampton Place, 13
WC1A 2AL
Drawing Title
Proposed Sections - Sheet 3

Purpose of Issue **Stage 3** Scale at A1 **As indicated**

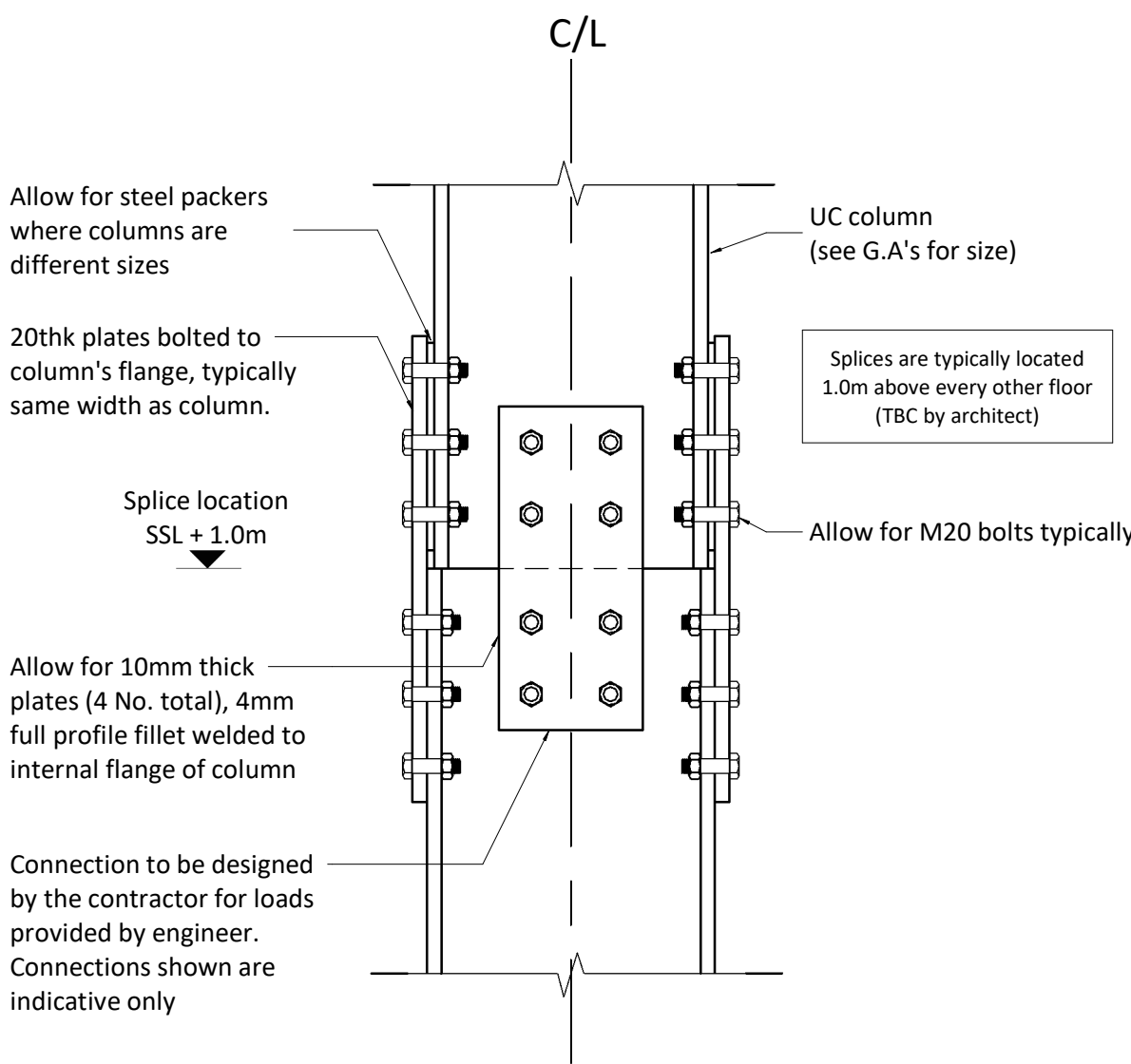
Drg No **2554-HTS-XX-ZZ-DR-S-3203**

HTS Job No **S2** Suitability Rev **P2**



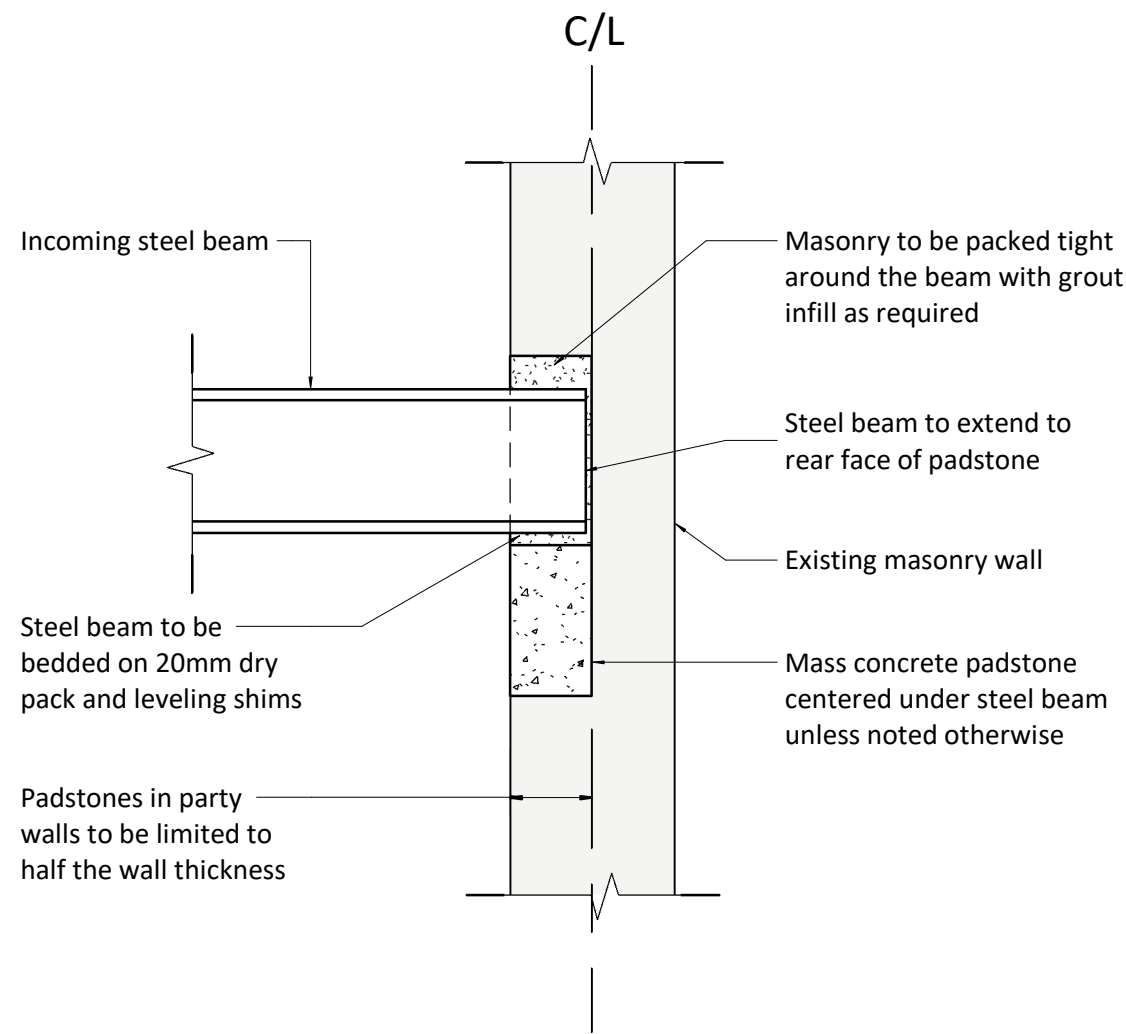
Typical Ground Bearing Slab Build-up

1 : 5



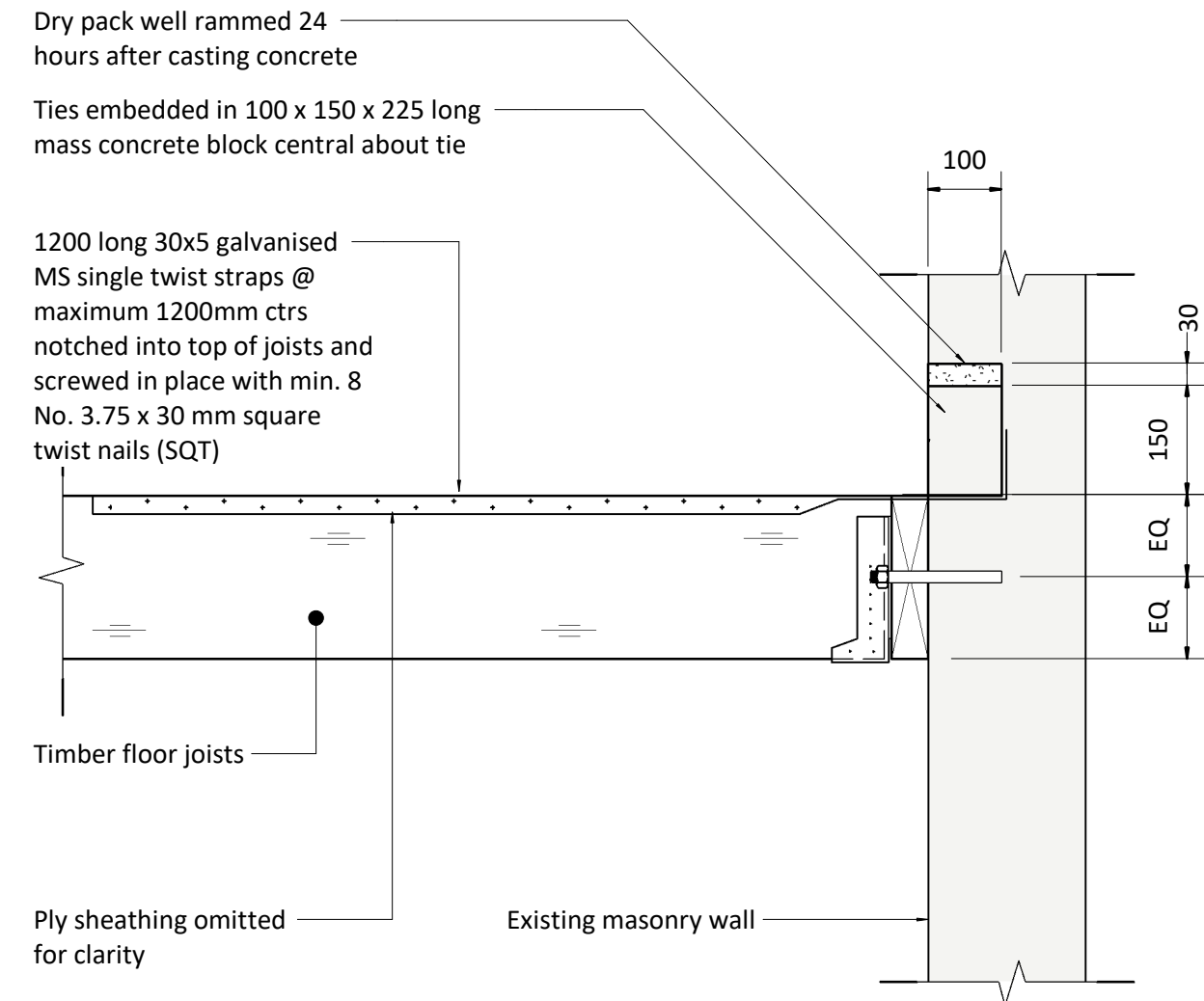
Typical Column Splice Detail

1 : 10



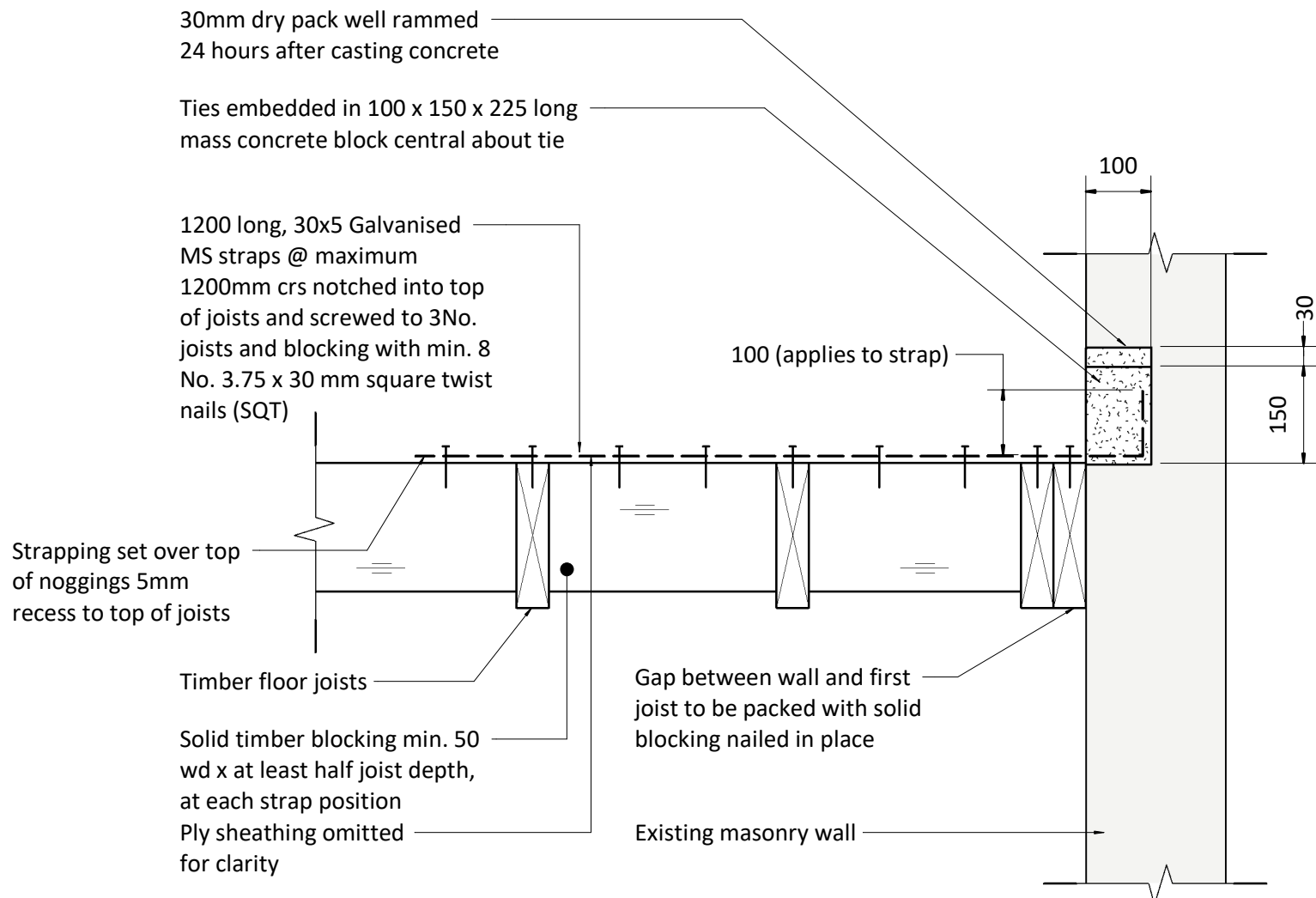
Typical MC Padstone Detail

1 : 10



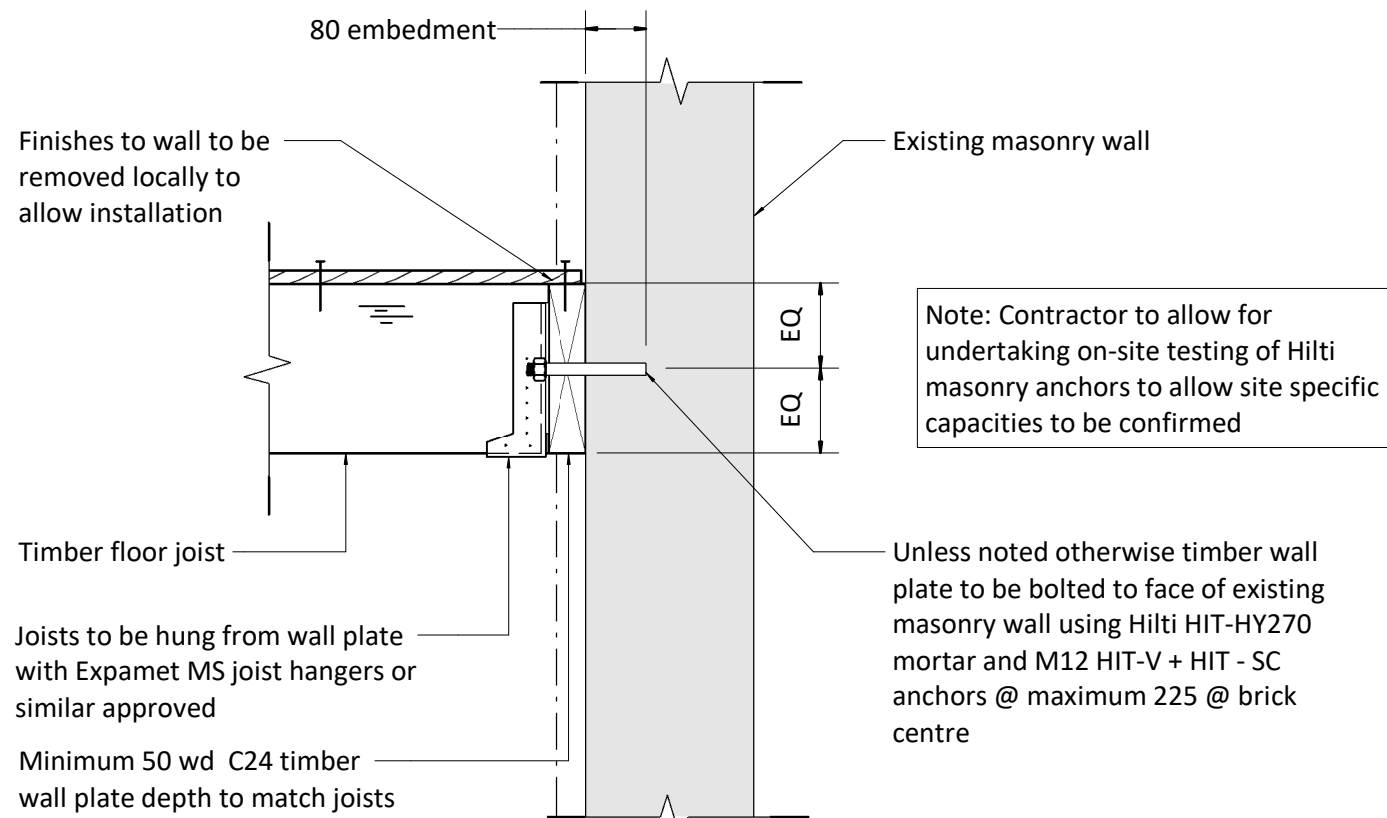
Straps to New Timber Floors - Joist Perpendicular Typical Detail

1 : 10



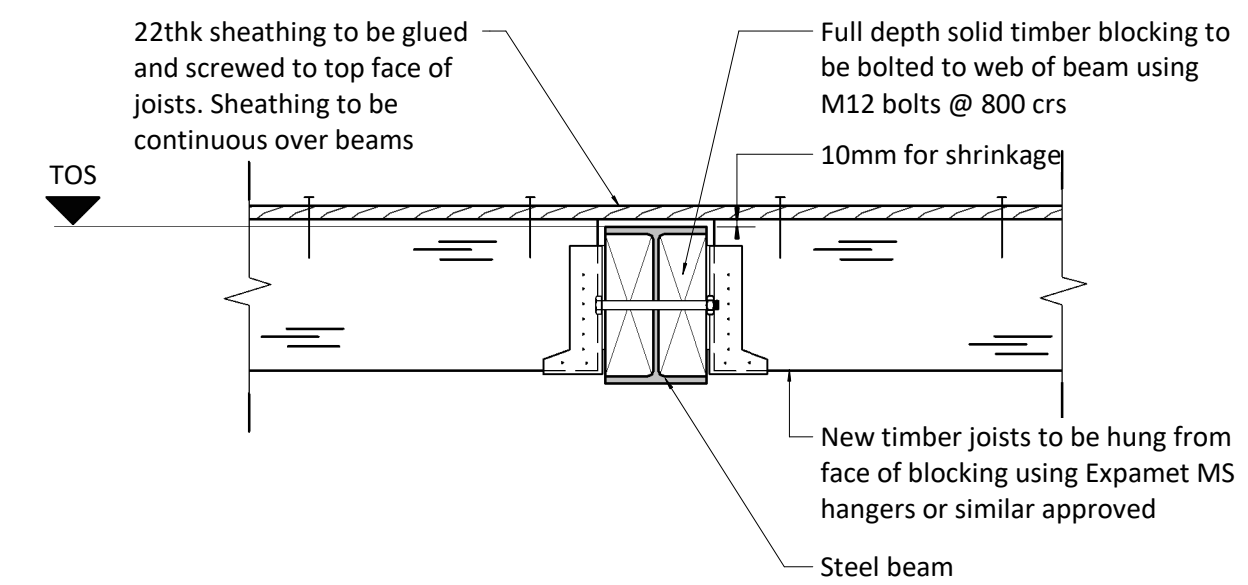
Straps to New Timber Floors - Joists Parallel Typical Detail

1 : 10



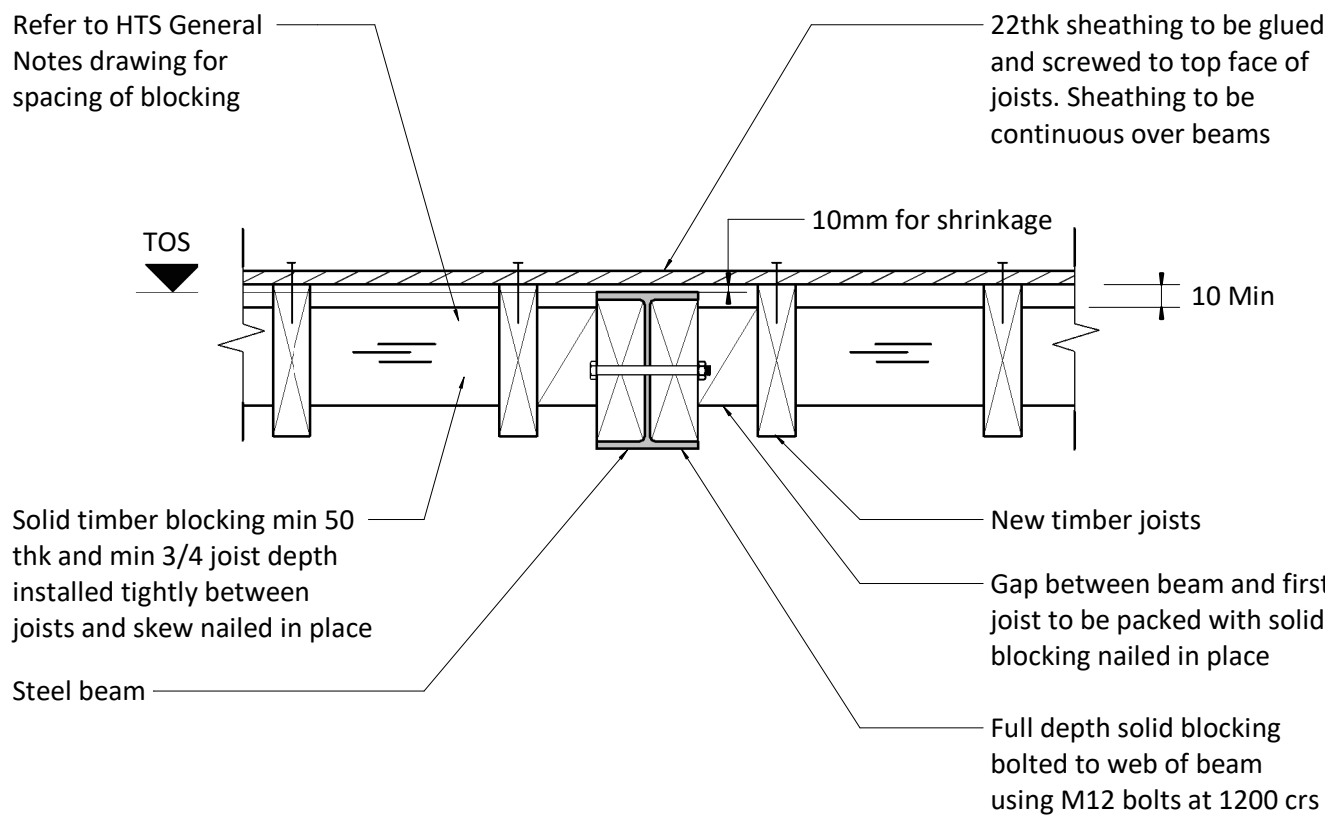
Typical Timber Wall Plate Detail

1 : 10



Typical Timber Joist / Beam Support Detail

1 : 10



Typical Timber Joist Floor Blocking Detail

1 : 10

100mm @ A1 (50mm @ A3)

- This drawing is to be read in conjunction with all relevant architects, engineers and specialists drawings and specifications.
- Do not scale from this drawing in either paper or digital form. Use written dimensions only. To check drawing has been printed to the intended scale the above bar should be 100mm
- Any setting out dimensions shown in red are to be confirmed by the architect. All dimensions are to be checked by the contractor against site dimensions prior to fabrication /commencement of work on site. Beams and columns are to be centred on grid unless noted otherwise. Setting out of steelwork is shown to the centre of symmetric sections and to the back face of PFCs and RSAs.

P2	13.10.21	LG	GW	Revised Stage 3 Issue	
P1	03.09.21	JMD	GW	STAGE 3 ISSUE	
Rev	Date	By	Eng	Amendment	

**HEYNE
TILLET
STEEL**

STRUCTURAL &
CIVIL ENGINEERS

<http://hts.uk.com/>

Job Name
Norfolk House
Southampton Place, 13
WC1A 2AL
Drawing Title
Proposed Typical Details -
Sheet 1

Purpose of Issue **Stage 3** Scale at A1 **As indicated**

Drg No **2554-HTS-XX-ZZ-DR-S-3401**

HTS Job No **S2** Suitability Rev **P2**

Appendix C

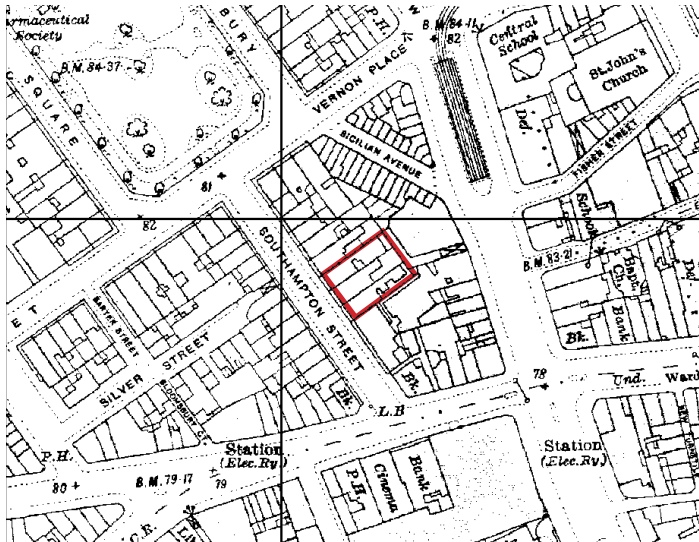
Historic Maps



Published 1878



Published 1896



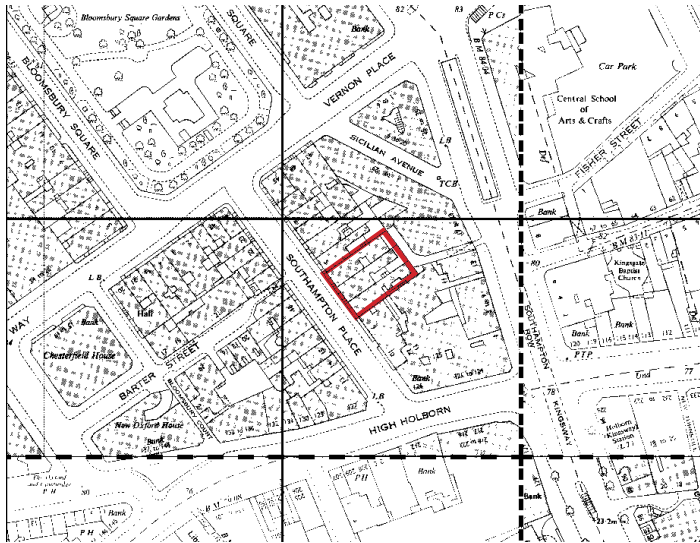
Published 1916



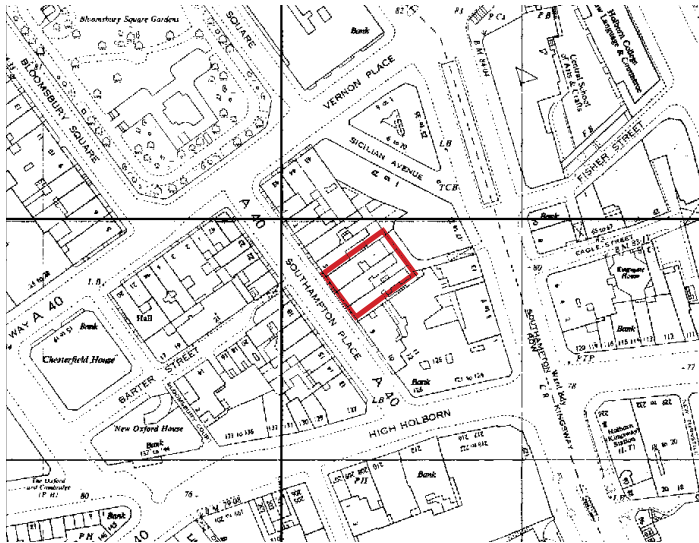
Published 1952



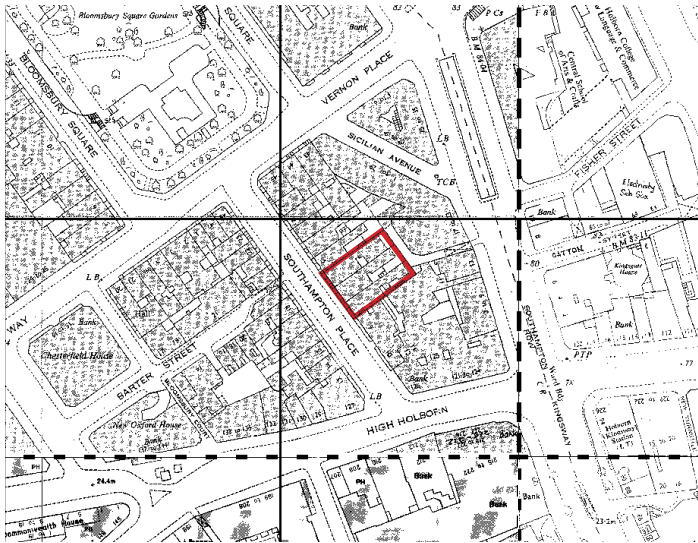
Published 1953



Published 1958 - 1969



Published 1968



Published 1974 - 1976



Published 1983 - 1990



Published 1991



Published 1992 - 1995

