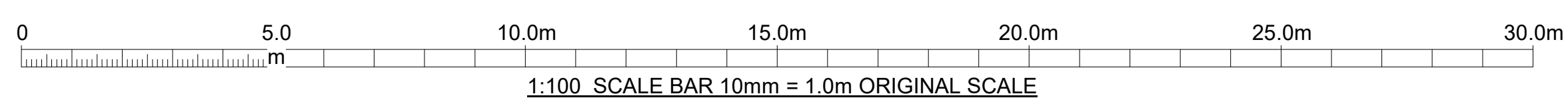
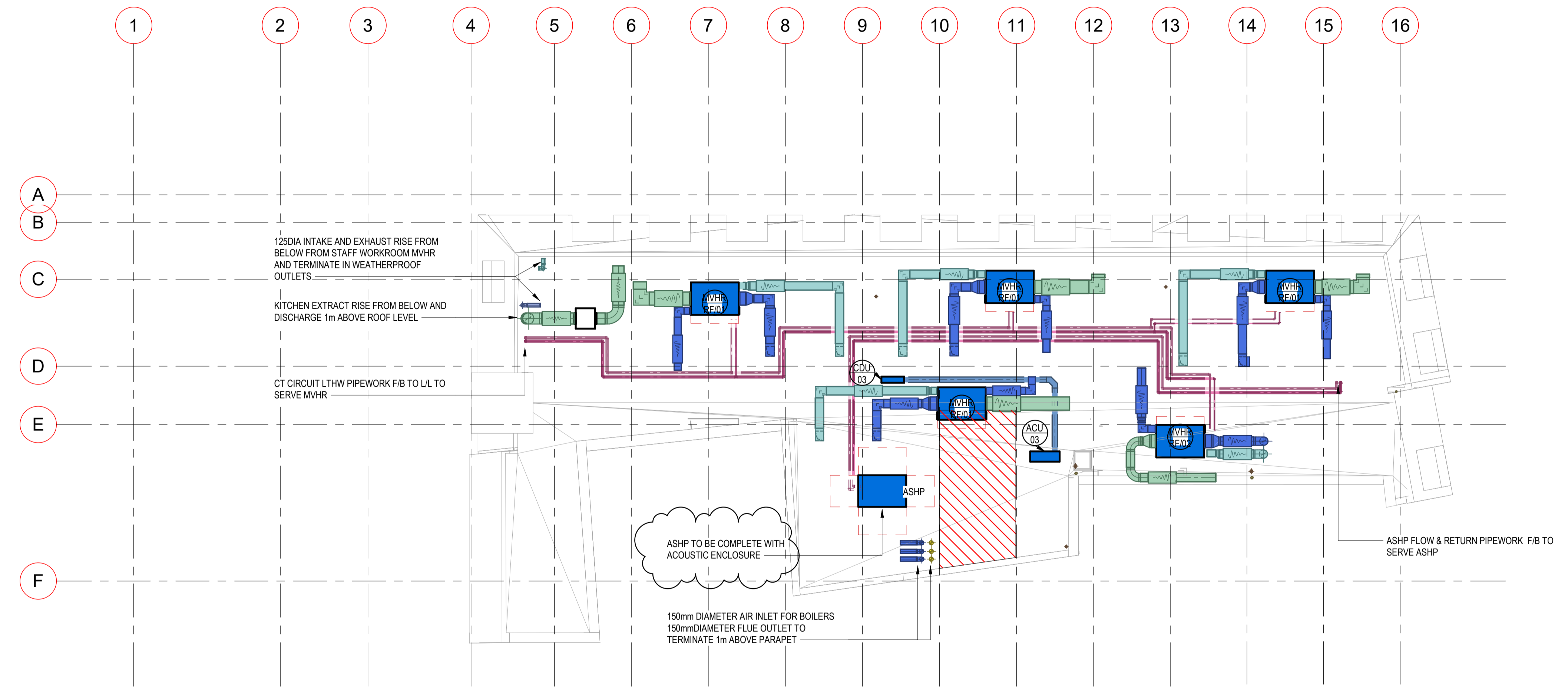


TRUE NORTH

**GENERAL NOTES**

1. DO NOT SCALE FROM THIS DRAWING
2. THE CONTRACTOR MUST VERIFY ALL DIMENSIONS, TOLERANCES AND REFERENCES BEFORE PROCEEDING WITH WORKS
3. ANY DISCREPANCY FOUND BETWEEN THIS DRAWING AND OTHER DOCUMENTS MUST BE REPORTED TO THE CONTRACT ADMINISTRATOR
4. REMOVE THIS DRAWING FROM CURRENCY WHEN REVISED DRAWING IS ISSUED
5. COPYRIGHT OF DESIGNS SHOWN ON THIS DRAWING REMAIN WITH ELEMENTA CONSULTING LTD.
6. THIS DRAWING IS TO BE READ IN CONJUNCTION WITH THE SPECIFICATION AND ALL OTHER CONTRACT PROJECT DOCUMENTS
7. THE CONTRACTOR SHALL REFER TO ARCHITECTS OR INTERIOR DESIGN DRAWINGS INCLUDING REFLECTED CEILING PLANS AND OTHER SPECIALIST DRAWINGS FOR SETTING OUT ALL VISIBLE WALL AND CEILING MOUNTED EQUIPMENT



A1 ORIGINAL SIZE DRAWING			
T03	TENDER UPDATES	RW	04.10.21
T02	STAGE 4 ISSUE	RW	03.09.21
T01	STAGE 4 ISSUE	RW	12.08.21
P01	STAGE 3 ISSUE	RW	18.06.21
No.	REVISION	CHK	DATE

**ELEMENTA**  
 Oxford Design Studio  
 99 Park Drive, Milton Park  
 Oxfordshire, OX14 4RY  
 t: +44 (0)1235 820300  
 e: enquiries@elementaconsulting.com  
 www.elementaconsulting.com

CLIENT  
 City Of London

PROJECT  
 City Junior School

TITLE  
 Roof Mechanical Services

DATE CREATED	May '21	SCALE	1:100
DESIGNED	MP	CHECKED	ES
		APPROVED	RW

SUITABILITY CODE  
 D2 FOR TENDER

DRAWING STATUS  
 STAGE 4

DRAWING No.	510556-ELE-XX-RF-DR-MX-50001	REVISION	T03
-------------	------------------------------	----------	-----