

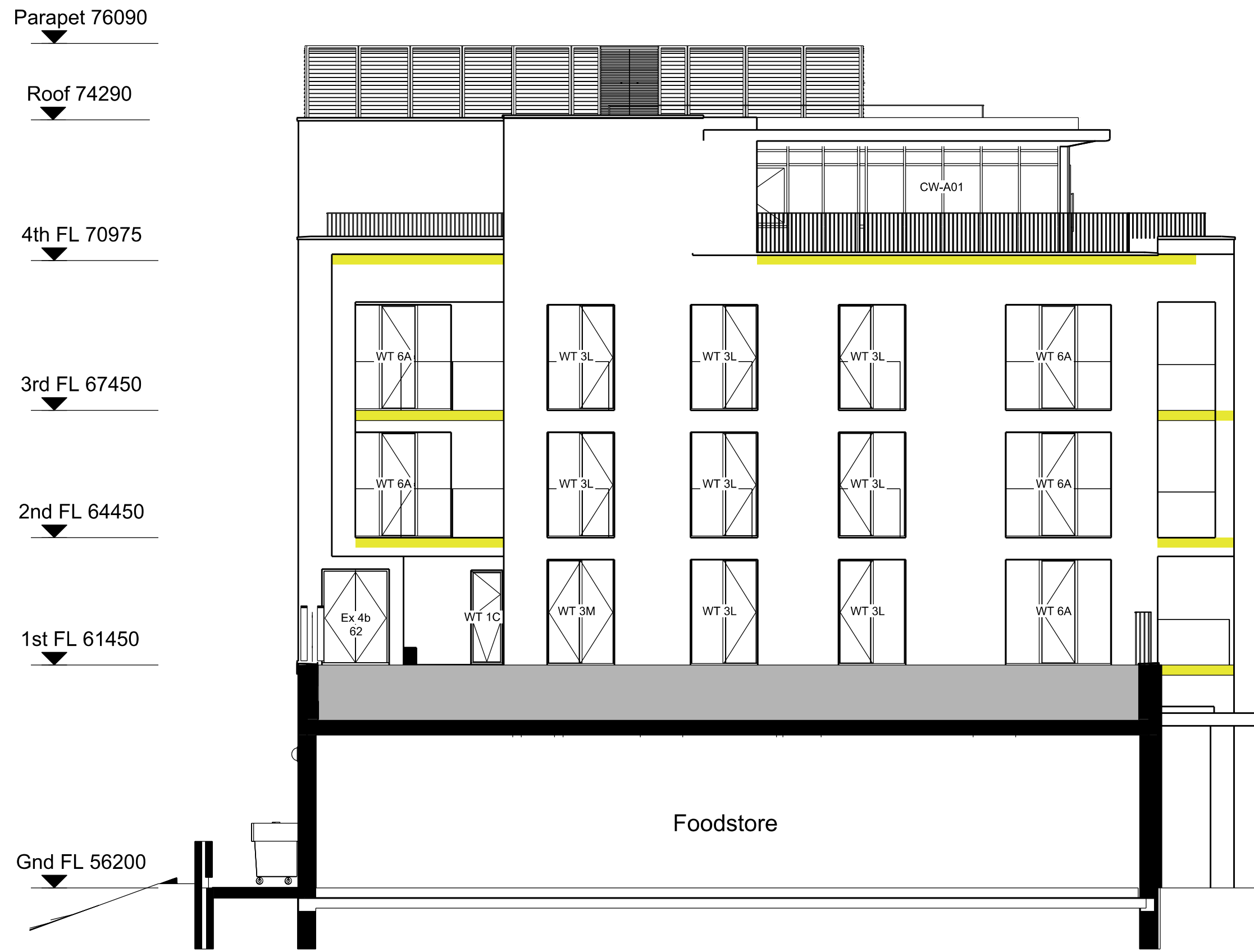
1 Block A North
Scale 1:200 at A3



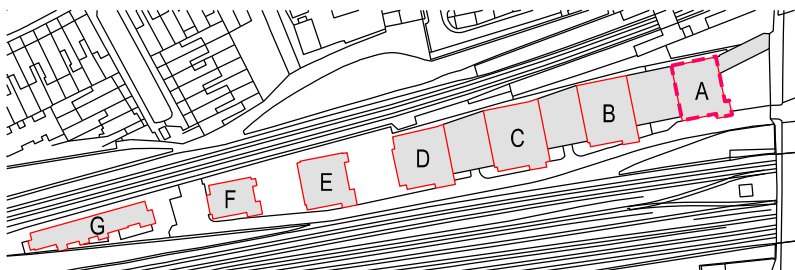
3 Block A South
Scale 1:200 at A3



2 Block A East
Scale 1:200 at A3

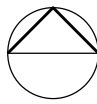


4 Block A West
Scale 1:200 at A3



West Hampstead Square - Key Plan
NTS

BUILDING A (HARDY BUILDING)



PROPOSED DECKING SPECIFICATION:

Yellow shaded area indicates area of existing timber balcony decking to be replaced with 'Mydek Delta 20 Decking System' which is a durable, non-combustible, aluminium decking system designed to enhance balconies and terraces, available in a range of standard finishes.

Mydek is compatible with the full range of support systems from MyDek for fast and accurate installation. MyDek is a speedy & accurate decking solution.

BOARD DIMENSIONS:
Board width x depth 144 x 20mm (150mm module)
Board length 4.2m or cut-to-length (subject to conditions)
Weight 12.47 kg/sqm

BOARD MATERIAL:
Board Aluminium grade 6063-T6
Expansion allowance 1mm per linear metre
Finish Polyester Powder Coating – 80micron slip-resistant



FOR PLANNING APPROVAL

<div>COMMON GROUND WORKSHOP</div> <div>COPYRIGHT AND NOTES</div> <div>DO NOT SCALE FROM THIS DRAWING. ALL DIMENSIONS TO BE VERIFIED ON SITE BY CONTRACTOR PRIOR TO COMMENCEMENT OF ANY SHOP DRAWINGS AND ANY WORKS ON SITE. REPORT ALL DISCREPANCIES TO THE ARCHITECT IMMEDIATELY.</div> <div>THIS DRAWING TO BE READ IN CONJUNCTION WITH ALL RELATED ARCHITECT/ENGINEERS DRAWINGS / DETAILS AND ALL OTHER RELEVANT INFORMATION</div>	COMMON GROUND WORKSHOP LTD		AMENDMENTS		CONSULTANT(S)		ADDITIONAL NOTES:		<div>CLIENT(S)</div> <div>WEST HAMPSTEAD SQUARE LLP C/O BALLYMORE ASSET MANAGEMENT LTD</div>	<div>PROJECT</div> <div>WEST HAMPSTEAD SQUARE - DECKING REPLACEMENT</div>	<div>DRAWING TITLE(S)</div> <div>PROPOSED BLOCK A (HARDY BUILDING) - ELEVATIONS</div>		<div>SCALE</div> <div>1:200 @A3</div>	<div>DRAWN</div> <div>CC</div>	<div>CHECKED</div> <div>MS</div>				
	<div>REV</div> <div>A</div>	<div>DATE</div> <div>27.08.2021</div>	<div>DESCRIPTION</div> <div>FOR PLANNING APPROVAL</div>	<div>BY</div> <div>CC</div>	<div>Project Manager:-</div>	<div>Structural Engineer:-</div>	<div>MEP Services Engineer:-</div>	<div>Planning Consultant:-</div>					<div>Daylight / Sunlight Consultant:-</div>	<div>Cost Consultant:-</div>	<div>This drawing is issued in DWG format; this is an uncontrolled version issued to enable the recipient to prepare their own drawings for which they are solely responsible. It is based on background information current at the time of issue. No liability is accepted for any such alterations or additions or discrepancies arising out of changes to such background information which occurs after it is issued.</div>	<div>This drawing is to be read in conjunction with all Engineer's drawings. Contractor to provide Structural Engineering/ design.</div>	<div>Contractor and Sub-Contractors, to to site measure and confirm all dimensions before before fabricating and constructing built elements. Where discrepancies found, Contractor/ Sub-Contractor to inform Design Team.</div>	<div>Do not scale from these drawings.</div>	<div>Report any errors, contradictions, & omissions to the architect as soon as possible.</div>
	The Common E2		53 Old Bethnal Green Rd, London, E2 6QA		T 077 65257123		info@commongroundworkshop.co.uk						www.commongroundworkshop.co.uk						
															<div>PROJECT NUMBER</div> <div>CGW-BDR-WHS-0114</div>	<div>DATE</div> <div>AUG 2021</div>			
															<div>DRAWING NUMBER</div> <div>BDR-WHS-PA-A-BA-2021</div>	<div>REVISION</div> <div>A</div>			