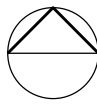


West Hampstead Square - Key Plan
NTS

BUILDING G (CHARLOTTE BUILDING)



PROPOSED DECKING SPECIFICATION:

Yellow shaded area indicates area of existing timber balcony decking to be replaced with 'Mydek Delta 20 Decking System' which is a durable, non-combustible, aluminium decking system designed to enhance balconies and terraces, available in a range of standard finishes.

Mydek is compatible with the full range of support systems from MyDek for fast and accurate installation. MyDek is a speedy & accurate decking solution.

BOARD DIMENSIONS:

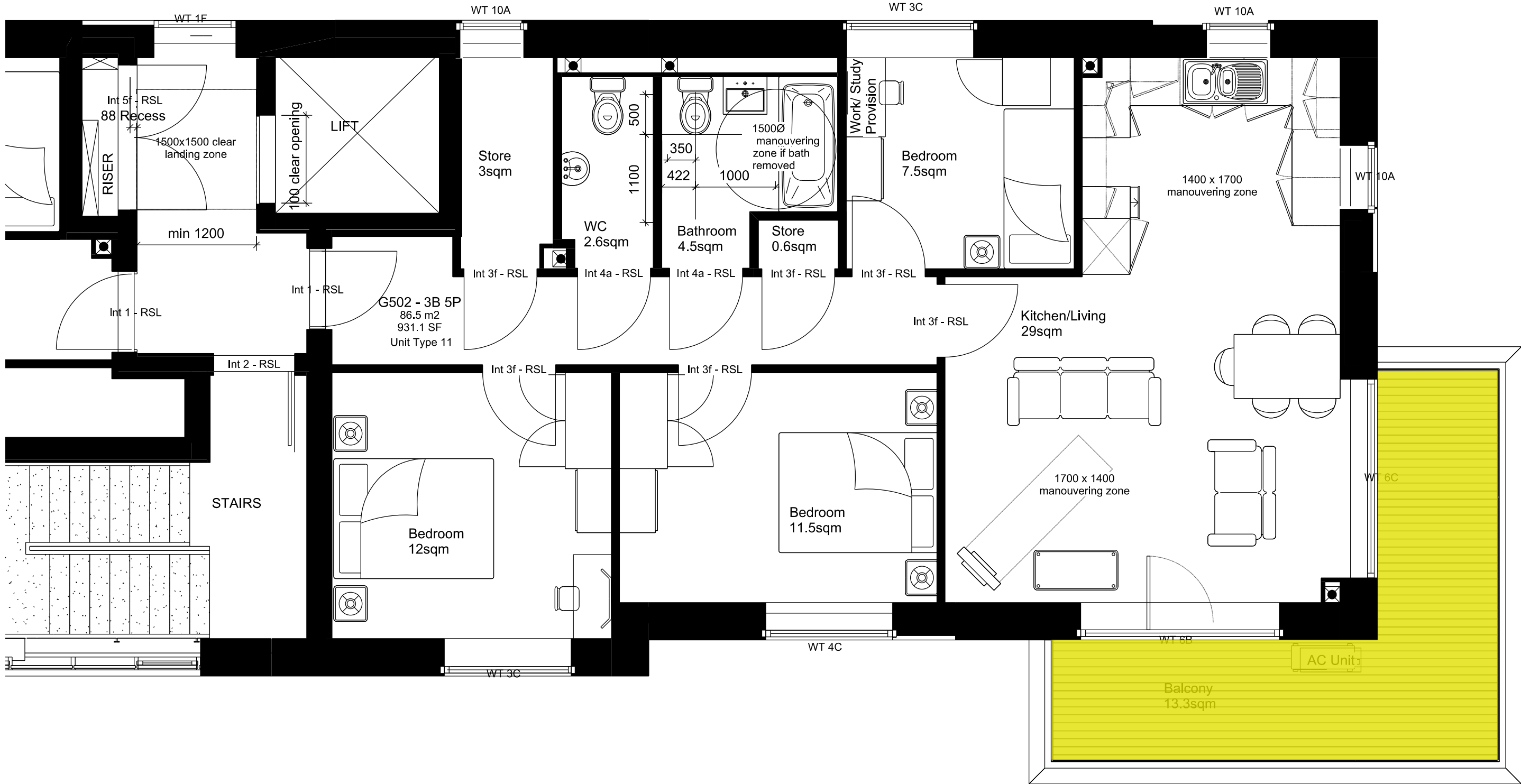
Board width x depth 144 x 20mm (150mm module)
Board length 4.2m or cut-to-length (subject to conditions)
Weight 12.47 kg/sqm

BOARD MATERIAL:

Board Aluminium grade 6063-T6
Expansion allowance 1mm per linear metre
Finish Polyester Powder Coating – 80micron slip-resistant

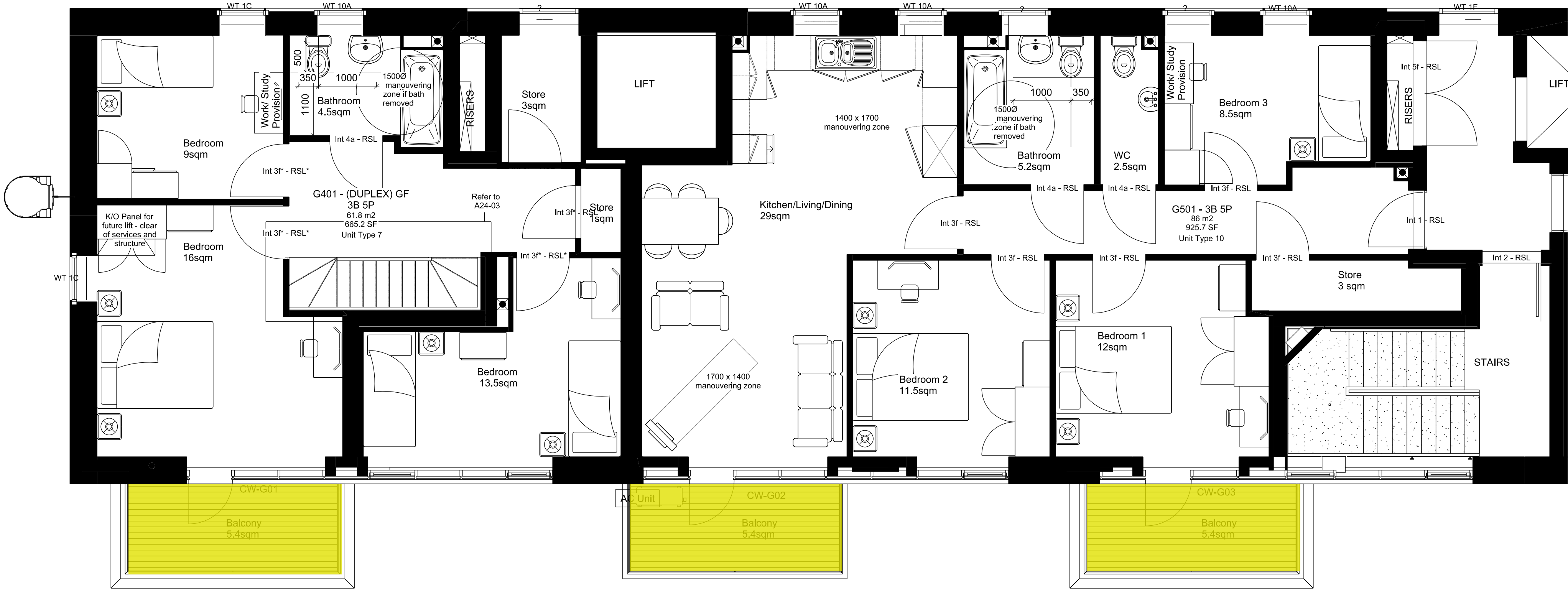
1 Block G - Fifth Floor Plan (2nd Half)

Scale 1:100 at A3

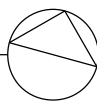


2 Block G - Fifth Floor Plan (1st Half)

Scale 1:100 at A3



FOR PLANNING APPROVAL



COMMON GROUND WORKSHOP		AMENDMENTS		CONSULTANT(S)		ADDITIONAL NOTES:		CLIENT(S)		PROJECT		DRAWING TITLE(S)		SCALE		DRAWN		CHECKED	
COMMON GROUND WORKSHOP LTD		The Common E2 53 Old Bethnal Green Rd, London, E2 6QA		Project Manager:- Structural Engineer:- MEP Services Engineer:- Planning Consultant:- Daylight / Sunlight Consultant:- Cost Consultant:-		All dimensions in MM unless otherwise stated. This drawing is to be read in conjunction with all relevant documents. This drawing is to be read in conjunction with all Engineer's drawings. Contractor to provide Structural Engineering/ design. Do not scale from this drawing. Report any errors, contradictions, & omissions to the architect as soon as possible.		WEST HAMPSTEAD SQUARE LLP C/O BALLYMORE ASSET MANAGEMENT LTD		WEST HAMPSTEAD SQUARE - DECKING REPLACEMENT		PROPOSED BLOCK G (CHARLOTTE BUILDING) - FIFTH FLOOR PLAN		1:100 @A3		CC		MS	
T 077 65257123 info@commongroundworkshop.co.uk www.commongroundworkshop.co.uk		REV DATE DESCRIPTION BY CC		A 27.08.2021 FOR PLANNING APPROVAL		This drawing is issued in DWG format; this is an uncontrolled version issued to enable the recipient to prepare their own drawings for which they are solely responsible. It is based on background information current at the time of issue. No liability is accepted for any such alterations or additions to or discrepancies arising out of changes to such background information which occurs after it is issued. Contractor and Sub-Contractors to site measure and confirm all dimensions before fabricating and constructing built elements. Where discrepancies found, Contractor/ Sub-Contractor to inform Design Team.		PROJECT NUMBER CGW-BDR-WHS-0114		DATE AUG 2021		DRAWING NUMBER BDR-WHS-PA-A-BG-2006		REVISION A					