
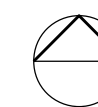


## West Hampstead Square - Key Plan

 BUILDING G (CHARLOTTE BUILDING)



**PROPOSED DECKING SPECIFICATION:**

Yellow shaded area indicates area of existing timber balcony decking to be replaced with 'Mydeck Delta 20 Decking System' which is a durable, non-combustible, aluminium decking system designed to enhance balconies and terraces, available in a range of standard finishes.

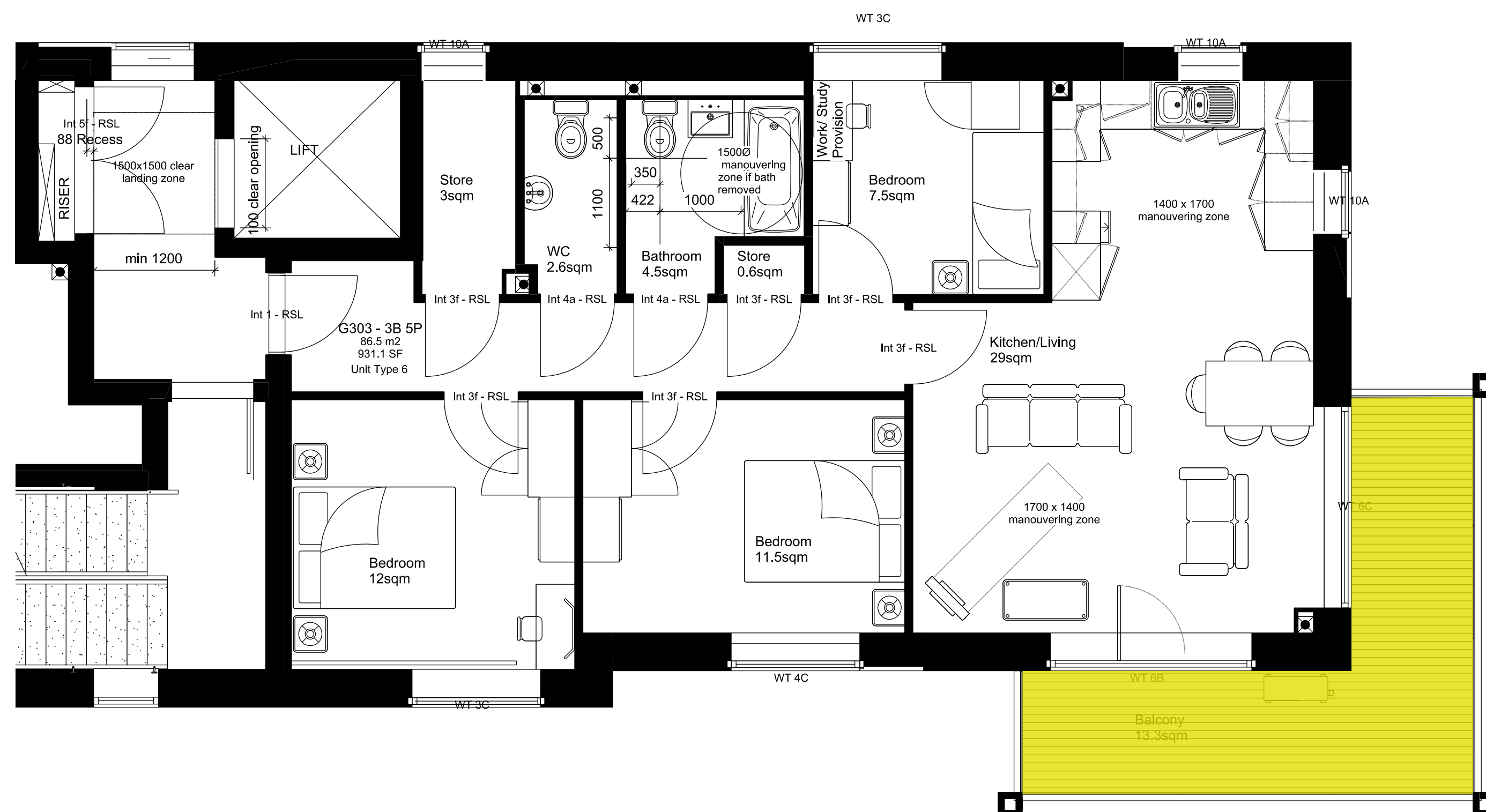
Mydek is compatible with the full range of support systems from MyDek for fast and accurate installation. MyDek is a speedy & accurate decking solution.

BOARD DIMENSIONS:

Board width x depth 144 x 20mm (150mm module)  
Board length 4.2m or cut-to-length (subject to  
conditions)  
Weight 12.47 kg/sqm

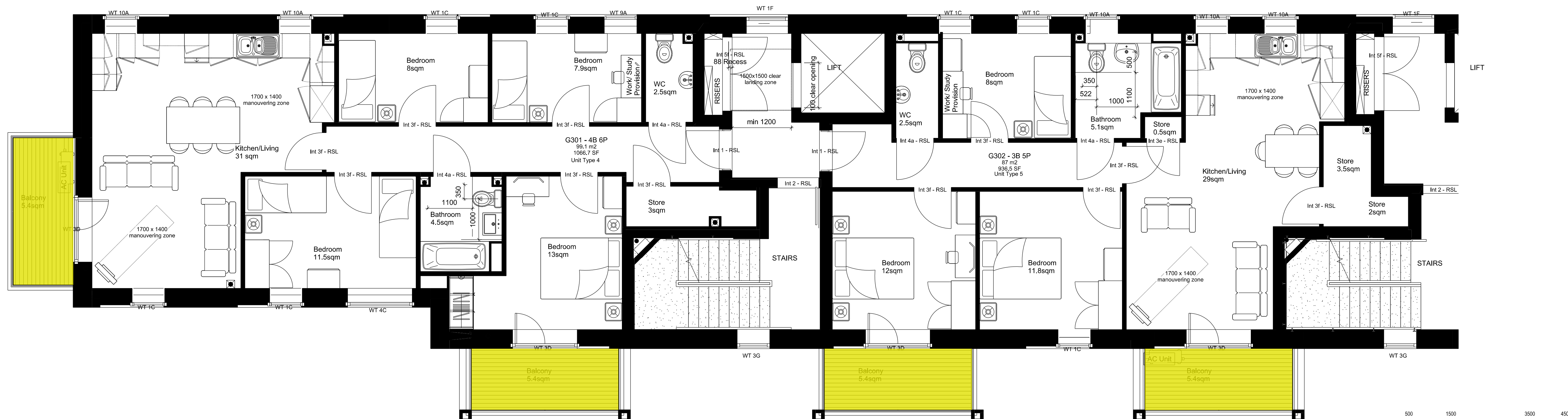
BOARD MATERIAL:

Board Aluminium grade 6063-T6  
Expansion allowance 1mm per linear metre  
Finish Polyester Powder Coating – 80micron  
slip-resistant



1 Block G - Third Floor Plan (2nd Half)

Scale 1:100 at A3

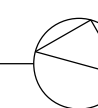


2 Block G - Third Floor Plan (1st Half)

Scale 1:100 at A3



FOR PLANNING APPROVAL



<div>COMMON GROUND WORKSHOP</div> <div>COPYRIGHT AND NOTES</div> <div>DO NOT SCALE FROM THIS DRAWING. ALL DIMENSIONS TO BE VERIFIED ON SITE BY CONTRACTOR PRIOR TO COMMENCEMENT OF ANY SHOP DRAWINGS AND ANY WORKS ON SITE. REPORT ALL DISCREPANCIES TO THE ARCHITECT IMMEDIATELY.</div> <div>THIS DRAWING TO BE READ IN CONJUNCTION WITH ALL RELATED ARCHITECT/ENGINEERS DRAWINGS / DETAILS AND ANY OTHER RELEVANT INFORMATION.</div>	<div>COMMON GROUND WORKSHOP LTD</div> <div>The Common E2</div> <div>53 Old Bethnal Green Rd, London, E2 6QA</div> <div>T 077 65257123</div> <div>info@commongroundworkshop.co.uk</div> <div>www.commongroundworkshop.co.uk</div>	<div>AMENDMENTS</div> <table><tr><th>REV</th><th>DATE</th><th>DESCRIPTION</th><th>BY</th></tr><tr><td>A</td><td>27.08.2021</td><td>FOR PLANNING APPROVAL</td><td>CC</td></tr></table>	REV	DATE	DESCRIPTION	BY	A	27.08.2021	FOR PLANNING APPROVAL	CC	<div>CONSULTANT(S)</div> <div>Project Manager -</div> <div>Structural Engineer -</div> <div>MEP Services Engineer -</div> <div>Planning Consultant -</div> <div>Daylight / Structural Consultant -</div> <div>Cost Consultant -</div>	<div>ADDITIONAL NOTES:</div> <div>All dimensions in MM unless otherwise stated.</div> <div>This drawing is to be read in conjunction with all relevant documents.</div> <div>This drawing is to be read in conjunction with provide Structural Engineering design.</div> <div>Do not scale from this drawing.</div> <div>Report any errors, contradictions, &amp; omissions to the architect as soon as possible.</div>	<div>This drawing is issued in DWG format; this is an uncontrolled version issued to enable the recipient to prepare their own drawings for which they are solely responsible.</div> <div>background imagery on drawings at the time of issue. No liability is accepted for any such changes or updates to such background information which occur after it is issued.</div> <div>Contractor and Sub-Contractors to so liable measure and confirm all dimensions before before fabricator build elements.</div> <div>Where discrepancies found, Contractor/ Sub-Contractor to inform Design Team.</div>	<div>CLIENT(S)</div> <div>WEST HAMPSTEAD SQUARE LLP</div> <div>C/O BALLYMORE ASSET MANAGEMENT LTD</div>	<div>PROJECT</div> <div>WEST HAMPSTEAD SQUARE - DECKING REPLACEMENT</div>	<div>DRAWING TITLE(S)</div> <div>PROPOSED BLOCK G (CHARLOTTE BUILDING) - THIRD FLOOR PLAN</div>	<div>SCALE</div> <div>1:100 @A3</div> <div>PROJECT NUMBER</div> <div>CGW-BDR-WHS-0114</div>	<div>DRAWN</div> <div>CC</div> <div>DATE</div> <div>AUG 2021</div>	<div>CHECKED</div> <div>MS</div> <div>REVISION</div> <div>BDR-WHS-PA-A-BG-2004</div> <div>A</div>
	REV	DATE	DESCRIPTION	BY															
	A	27.08.2021	FOR PLANNING APPROVAL	CC															