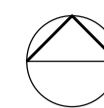


West Hampstead Square - Key Plan

BUILDING G (CHARLOTTE BUILDING)



PROPOSED DECKING SPECIFICATION:

Yellow shaded area indicates area of existing timber balcony decking to be replaced with 'Mydek Delta 20 Decking System' which is a durable, non-combustible, aluminium decking system designed to enhance balconies and terraces, available in a range of standard finishes.

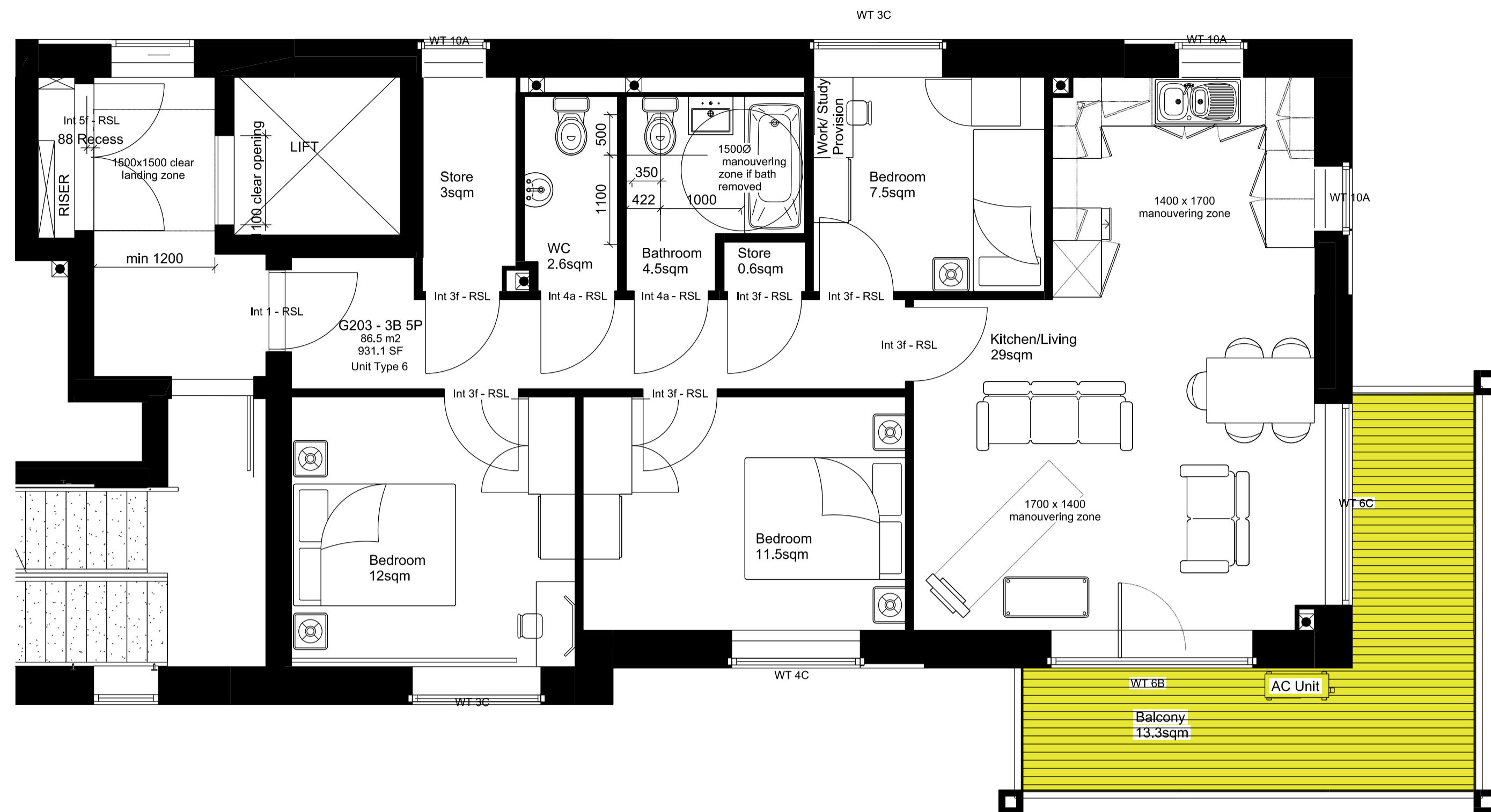
Mydek is compatible with the full range of support systems from MyDek for fast and accurate installation. MyDek is a speedy & accurate decking solution.

BOARD DIMENSIONS:

Board width x depth 144 x 20mm (150mm module)
Board length 4.2m or cut-to-length (subject to conditions)
Weight 12.47 kg/sqm

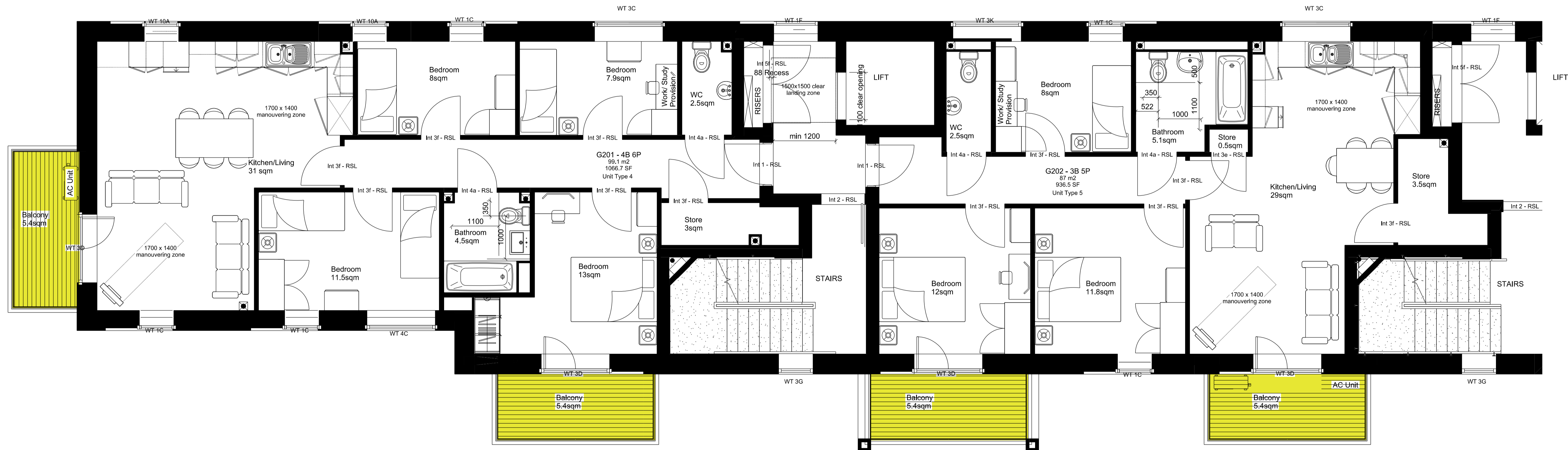
BOARD MATERIAL:

Board Aluminium grade 6063-T6
Expansion allowance 1mm per linear metre
Finish Polyester Powder Coating – 80micron
slip-resistant



1 Block G - Second Floor Plan (2nd Half)

Scale 1:100 at A3

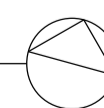


2 Block G - Second Floor Plan (1st Half)

Scale 1:100 at A3



FOR PLANNING APPROVAL



<div>COMMON GROUND WORKSHOP</div> <div>COPYRIGHT AND NOTES</div> <div>DO NOT SCALE FROM THIS DRAWING. ALL DIMENSIONS TO BE VERIFIED ON SITE BY CONTRACTOR PRIOR TO COMMENCEMENT OF ANY SHOP DRAWINGS AND ANY WORKS ON SITE. REPORT ALL DISCREPANCIES TO THE ARCHITECT IMMEDIATELY. THIS DRAWING TO BE READ IN CONJUNCTION WITH ALL RELATED ARCHITECT/ENGINEERS DRAWINGS / DETAILS AND ALL OTHER RELEVANT INFORMATION</div>	<div>COMMON GROUND WORKSHOP LTD</div> <div>The Common E2 53 Old Bethnal Green Rd, London, E2 6QA</div> <div>T 077 65257123 info@commongroundworkshop.co.uk www.commongroundworkshop.co.uk</div>	<table><tr><th colspan="2">AMENDMENTS</th><th>CONSULTANT(S)</th></tr><tr><th>REV</th><th>DATE</th><th>DESCRIPTION</th><th>BY</th></tr><tr><td>A</td><td>27.08.2021</td><td>FOR PLANNING APPROVAL</td><td>CC</td></tr></table>	AMENDMENTS		CONSULTANT(S)	REV	DATE	DESCRIPTION	BY	A	27.08.2021	FOR PLANNING APPROVAL	CC	<table><tr><th>CONSULTANT(S)</th><th>ADDITIONAL NOTES:</th><th>CLIENT(S)</th></tr><tr><td>Project Manager: - Structural Engineer: - MEP Services Engineer: - Planning Consultant: - Daylight / Sunlight Consultant: - Cost Consultant: -</td><td><p>This drawing is issued in DWG format; this is an uncontrolled version issued to enable the client to prepare their own drawings for which they are solely responsible. It is based on background information supplied to the time of issue. No liability is accepted for any such alterations or additions to or discrepancies arising out of changes to such background information which occurs after it is issued.</p><p>Contractor and Sub-Contractors to take measure and confirm all dimensions before fabricating and constructing built elements. Where discrepancies found, Contractor is to liaise with architect as soon as possible.</p><p>Report any errors, contradictions, & omissions to the architect as soon as possible.</p></td><td>WEST HAMPSTEAD SQUARE LLP C/O BALLYMORE ASSET MANAGEMENT LTD</td></tr></table>	CONSULTANT(S)	ADDITIONAL NOTES:	CLIENT(S)	Project Manager: - Structural Engineer: - MEP Services Engineer: - Planning Consultant: - Daylight / Sunlight Consultant: - Cost Consultant: -	<p>This drawing is issued in DWG format; this is an uncontrolled version issued to enable the client to prepare their own drawings for which they are solely responsible. It is based on background information supplied to the time of issue. No liability is accepted for any such alterations or additions to or discrepancies arising out of changes to such background information which occurs after it is issued.</p> <p>Contractor and Sub-Contractors to take measure and confirm all dimensions before fabricating and constructing built elements. Where discrepancies found, Contractor is to liaise with architect as soon as possible.</p> <p>Report any errors, contradictions, & omissions to the architect as soon as possible.</p>	WEST HAMPSTEAD SQUARE LLP C/O BALLYMORE ASSET MANAGEMENT LTD	<div>PROJECT</div> <div>WEST HAMPSTEAD SQUARE - DECKING REPLACEMENT</div>	<div>DRAWING TITLE(S)</div> <div>PROPOSED BLOCK G (CHARLOTTE BUILDING) - SECOND FLOOR PLAN</div>	<table><tr><th>SCALE</th><th>DRAWN</th><th>CHECKED</th></tr><tr><td>1:100 @A3</td><td>CC</td><td>MS</td></tr></table>	SCALE	DRAWN	CHECKED	1:100 @A3	CC	MS	<table><tr><th>PROJECT NUMBER</th><th>DATE</th></tr><tr><td>CGW-BDR-WHS-0114</td><td>AUG 2021</td></tr></table>	PROJECT NUMBER	DATE	CGW-BDR-WHS-0114	AUG 2021	<table><tr><th>DRAWING NUMBER</th><th>REVISION</th></tr><tr><td>BDR-WHS-PA-A-BG-2003</td><td>A</td></tr></table>	DRAWING NUMBER	REVISION	BDR-WHS-PA-A-BG-2003	A
	AMENDMENTS		CONSULTANT(S)																																				
	REV	DATE	DESCRIPTION	BY																																			
	A	27.08.2021	FOR PLANNING APPROVAL	CC																																			
	CONSULTANT(S)	ADDITIONAL NOTES:	CLIENT(S)																																				
Project Manager: - Structural Engineer: - MEP Services Engineer: - Planning Consultant: - Daylight / Sunlight Consultant: - Cost Consultant: -	<p>This drawing is issued in DWG format; this is an uncontrolled version issued to enable the client to prepare their own drawings for which they are solely responsible. It is based on background information supplied to the time of issue. No liability is accepted for any such alterations or additions to or discrepancies arising out of changes to such background information which occurs after it is issued.</p> <p>Contractor and Sub-Contractors to take measure and confirm all dimensions before fabricating and constructing built elements. Where discrepancies found, Contractor is to liaise with architect as soon as possible.</p> <p>Report any errors, contradictions, & omissions to the architect as soon as possible.</p>	WEST HAMPSTEAD SQUARE LLP C/O BALLYMORE ASSET MANAGEMENT LTD																																					
SCALE	DRAWN	CHECKED																																					
1:100 @A3	CC	MS																																					
PROJECT NUMBER	DATE																																						
CGW-BDR-WHS-0114	AUG 2021																																						
DRAWING NUMBER	REVISION																																						
BDR-WHS-PA-A-BG-2003	A																																						