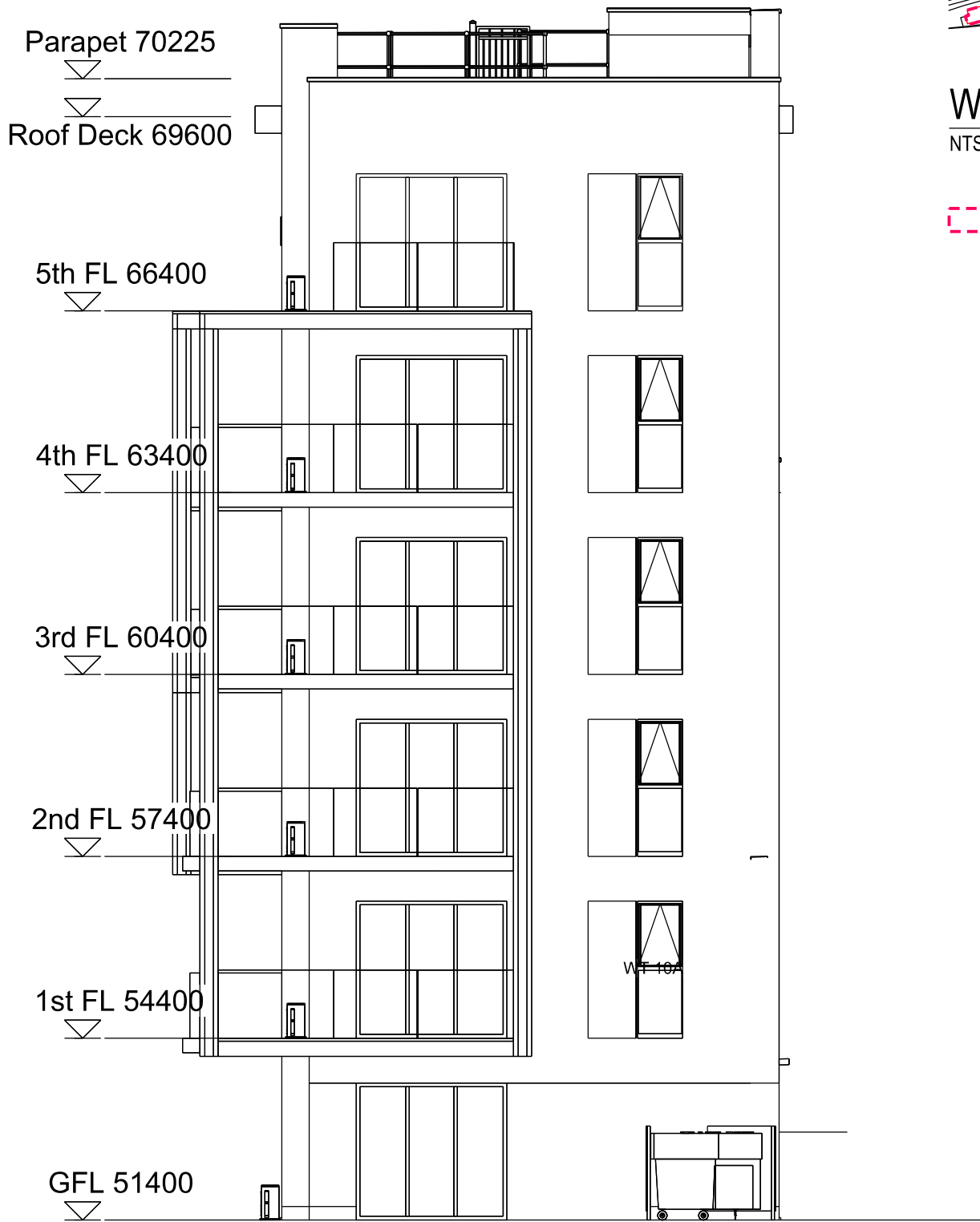


West Hampstead Square - Key Plan
NTS

BUILDING G (CHARLOTTE BUILDING)



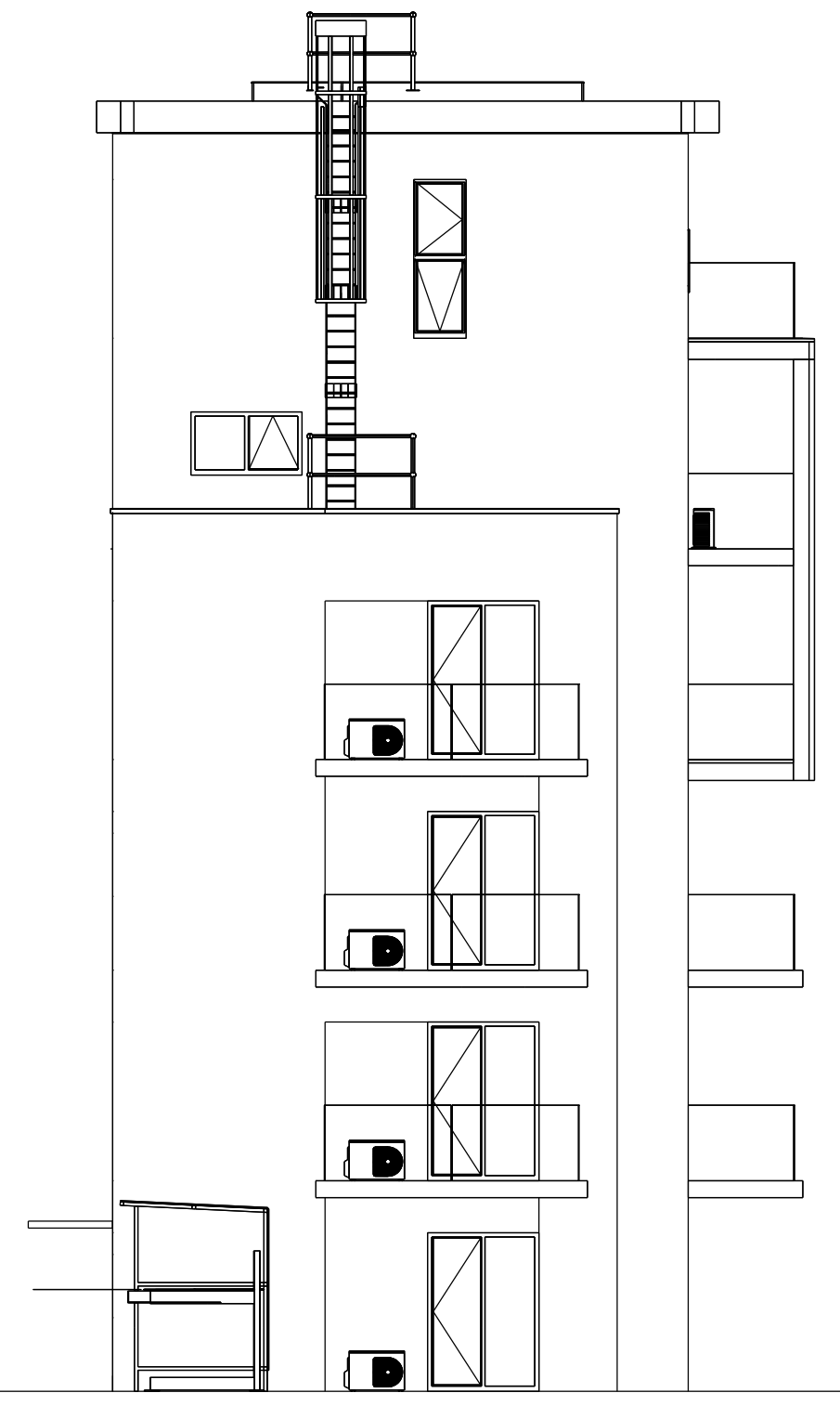
1 Block G
Scale 1:200 at A3



2 Block G
Scale 1:200 at A3



3 Block G
Scale 1:200 at A3



4 Block G
Scale 1:200 at A3



FOR PLANNING APPROVAL

<div>COMMON GROUND WORKSHOP</div> <div>COPYRIGHT AND NOTES</div> <div>DO NOT SCALE FROM THIS DRAWING. ALL DIMENSIONS TO BE VERIFIED ON SITE BY CONTRACTOR PRIOR TO COMMENCEMENT OF ANY SHOP DRAWINGS AND ANY WORKS ON SITE. REPORT ALL DISCREPANCIES TO THE ARCHITECT IMMEDIATELY.</div> <div>THIS DRAWING TO BE READ IN CONJUNCTION WITH ALL RELATED ARCHITECT/ENGINEERS DRAWINGS / DETAILS AND ALL OTHER RELEVANT INFORMATION.</div>	<div>COMMON GROUND WORKSHOP LTD</div> <div>The Common E2</div> <div>53 Old Bethnal Green Rd, London, E2 6QA</div> <div>T 077 65257123</div> <div>info@commongroundworkshop.co.uk</div> <div>www.commongroundworkshop.co.uk</div>	AMENDMENTS		CONSULTANT(S)	ADDITIONAL NOTES:	<div>This drawing is issued in DWG format; this is an uncontrolled version issued to enable the recipient to prepare their own drawings for which they are solely responsible. It is based on background information current at the time of issue. No liability is accepted for any such alterations or additions or discrepancies arising out of changes to such background information which occurs after it is issued.</div> <div>Contractor and Sub-Contractors to to site measure and confirm all dimensions before before fabricating and constructing built elements. Where discrepancy is found, Contractor/ Sub-Contractor to inform Design Team.</div> <div>Do not scale from these drawings.</div> <div>Report any errors, contradictions, & omissions to the architect as soon as possible.</div>	CLIENT(S)	PROJECT	DRAWING TITLE(S)	SCALE	DRAWN	CHECKED			
	REV	DATE	DESCRIPTION	BY	1:200 @A3					CC	MS				
	A	27.08.2021	FOR PLANNING APPROVAL	CC	This drawing is to be read in conjunction with all relevant documents.					This drawing is to be read in conjunction with all Engineer's drawings. Contractor to provide Structural Engineering/ design.	WEST HAMPSTEAD SQUARE LLP C/O BALLYMORE ASSET MANAGEMENT LTD	WEST HAMPSTEAD SQUARE - DECKING REPLACEMENT	EXISTING BLOCK G (CHARLOTTE BUILDING) - ELEVATIONS	PROJECT NUMBER	DATE
												CGW-BDR-WHS-0114	AUG 2021		
												DRAWING NUMBER	REVISION		
							BDR-WHS-PA-A-BG-1021		A						