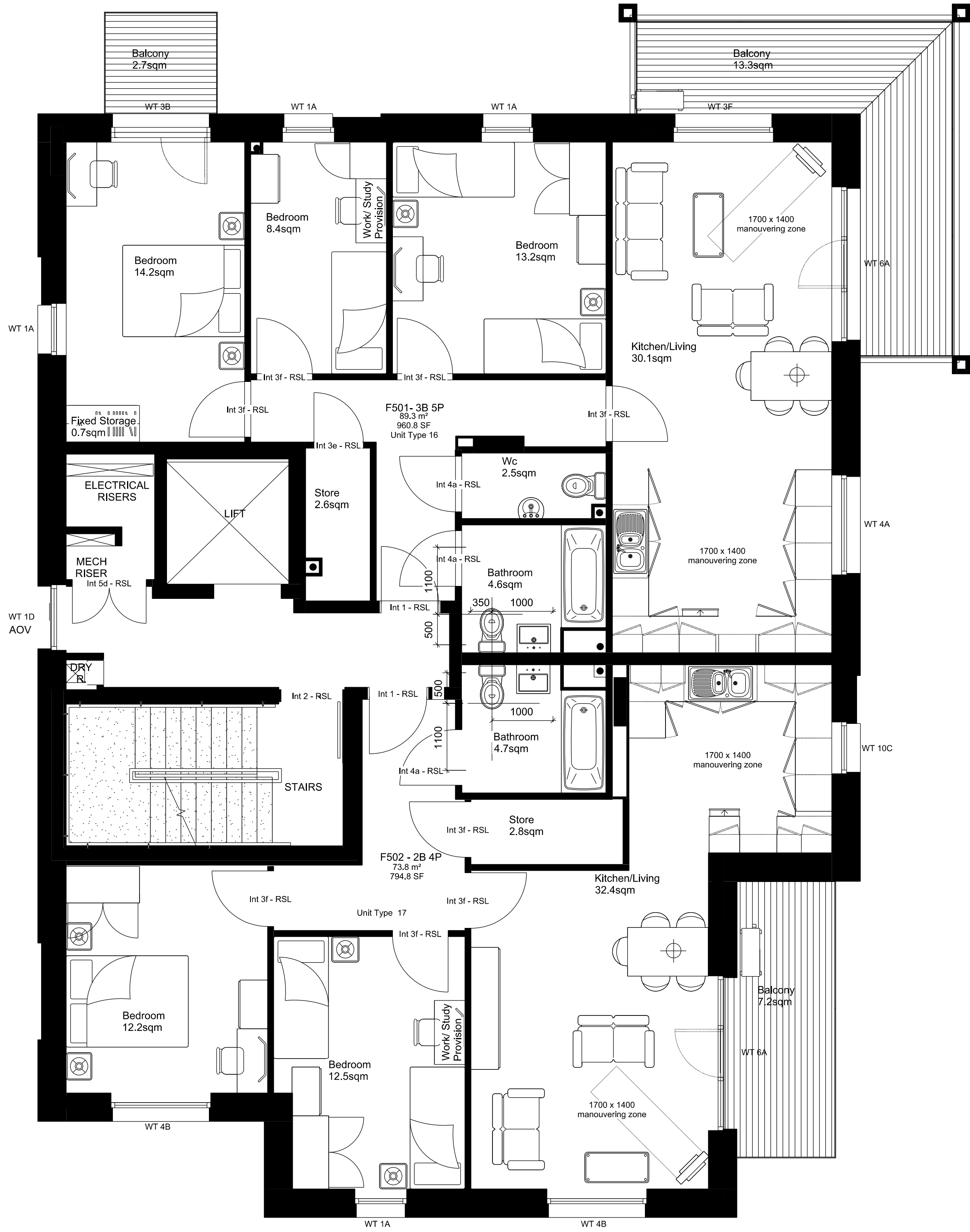


West Hampstead Square - Key Plan

NTS

F BUILDING F (LILY BUILDING)



FOR PLANNING APPROVAL



1 Block F - Fifth Floor Plan

Scale 1:100 at A3

<div>COMMON GROUND WORKSHOP</div> <div>COPYRIGHT AND NOTES</div> <div>DO NOT SCALE FROM THIS DRAWING. ALL DIMENSIONS TO BE VERIFIED ON SITE BY CONTRACTOR PRIOR TO COMMENCEMENT OF ANY SHOP DRAWINGS AND ANY WORKS ON SITE. REPORT ALL DISCREPANCIES TO THE ARCHITECT IMMEDIATELY.</div> <div>THIS DRAWING TO BE READ IN CONJUNCTION WITH ALL RELATED ARCHITECT/ENGINEERS DRAWINGS / DETAILS AND ALL OTHER RELEVANT INFORMATION</div>	<div>COMMON GROUND WORKSHOP LTD</div> <div>The Common E2</div> <div>53 Old Bethnal Green Rd, London, E2 6QA</div> <div>T 077 65257123</div> <div>info@commongroundworkshop.co.uk</div> <div>www.commongroundworkshop.co.uk</div>	AMENDMENTS				CONSULTANT(S)	ADDITIONAL NOTES:	<div>This drawing is issued in DWG format; this is an uncontrolled version issued to enable the recipient to prepare their own drawings for which they are solely responsible. It is based on background information current at the time of issue. No liability is accepted for any such alterations or additions or discrepancies arising out of changes to such background information which occur after it is issued.</div> <div>Contractor and Sub-Contractors to site measure and confirm all dimensions before fabricating and constructing built elements.</div> <div>Report any errors, contradictions, & omissions to the architect as soon as possible.</div>	CLIENT(S)	PROJECT	DRAWING TITLE(S)	SCALE	DRAWN	CHECKED		
		REV	DATE	DESCRIPTION	BY	This drawing is to be read in conjunction with all relevant documents.	WEST HAMPSTEAD SQUARE LLP C/O BALLYMORE ASSET MANAGEMENT LTD					WEST HAMPSTEAD SQUARE - DECKING REPLACEMENT	EXISTING BLOCK F (LILY BUILDING) - FIFTH FLOOR PLAN	1:100 @A3	CC	MS
		A	27.08.2021	FOR PLANNING APPROVAL	CC	This drawing is to be read in conjunction with all Engineer's drawings. Contractor to provide Structural Engineering/ design.								PROJECT NUMBER	DATE	
						CGW-BDR-WHS-0114								AUG 2021		
						DRAWING NUMBER								REVISION		
								BDR-WHS-PA-A-BF-1006	A							