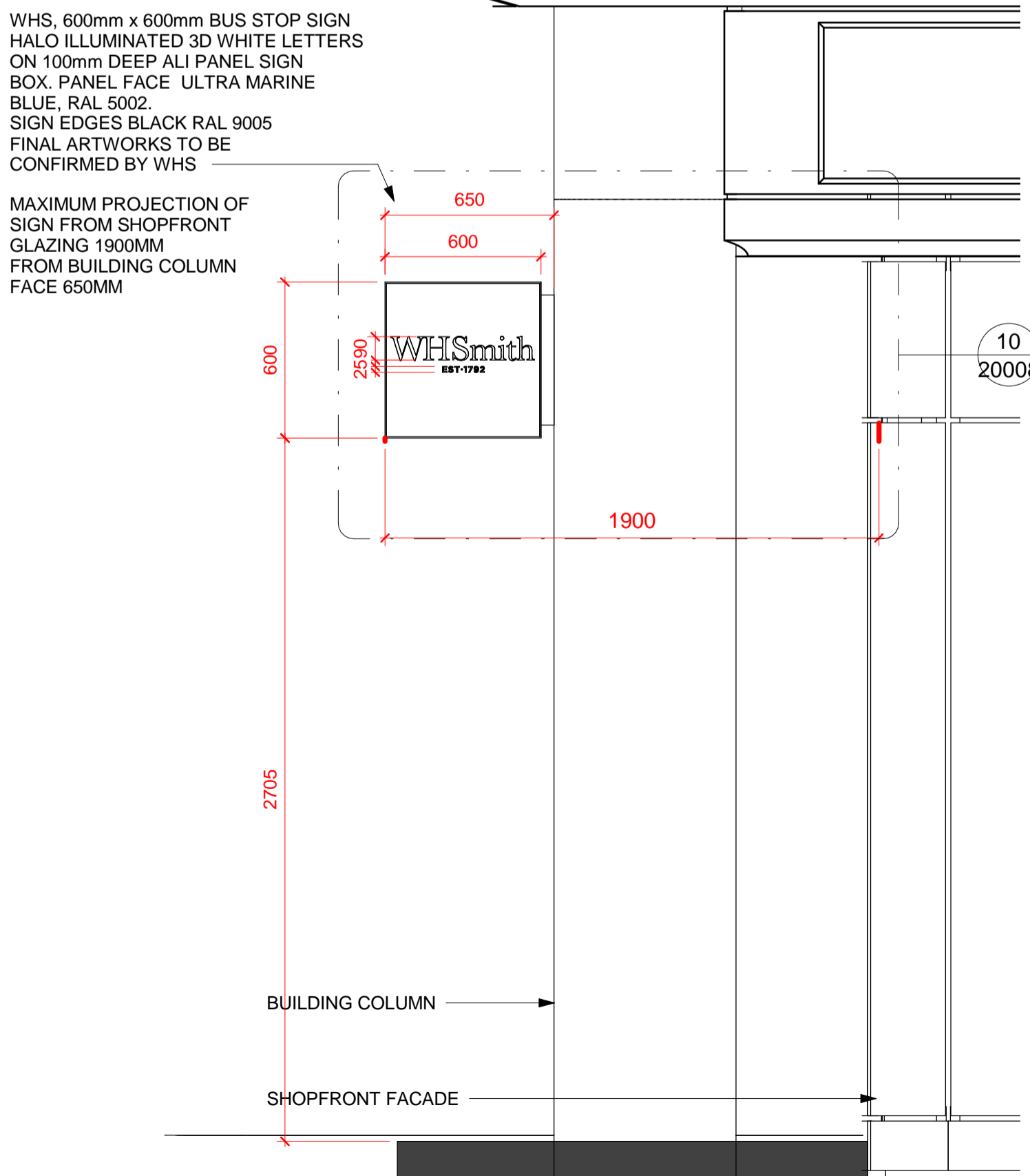
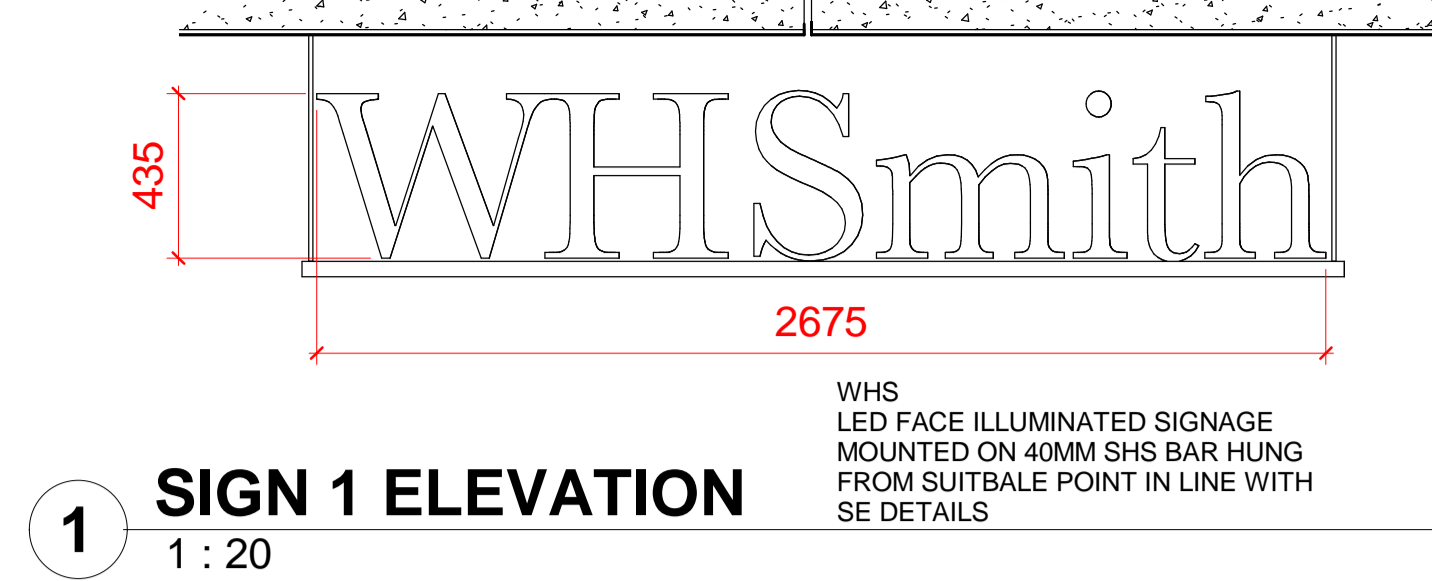


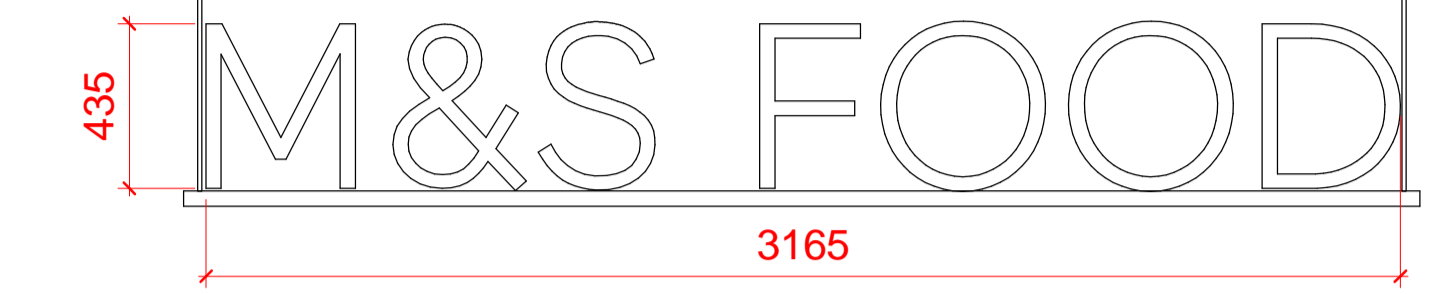
6 SIGN 6 Details
1 : 20



7 SIGN 7 Details
1 : 20



1 SIGN 1 ELEVATION
1 : 20



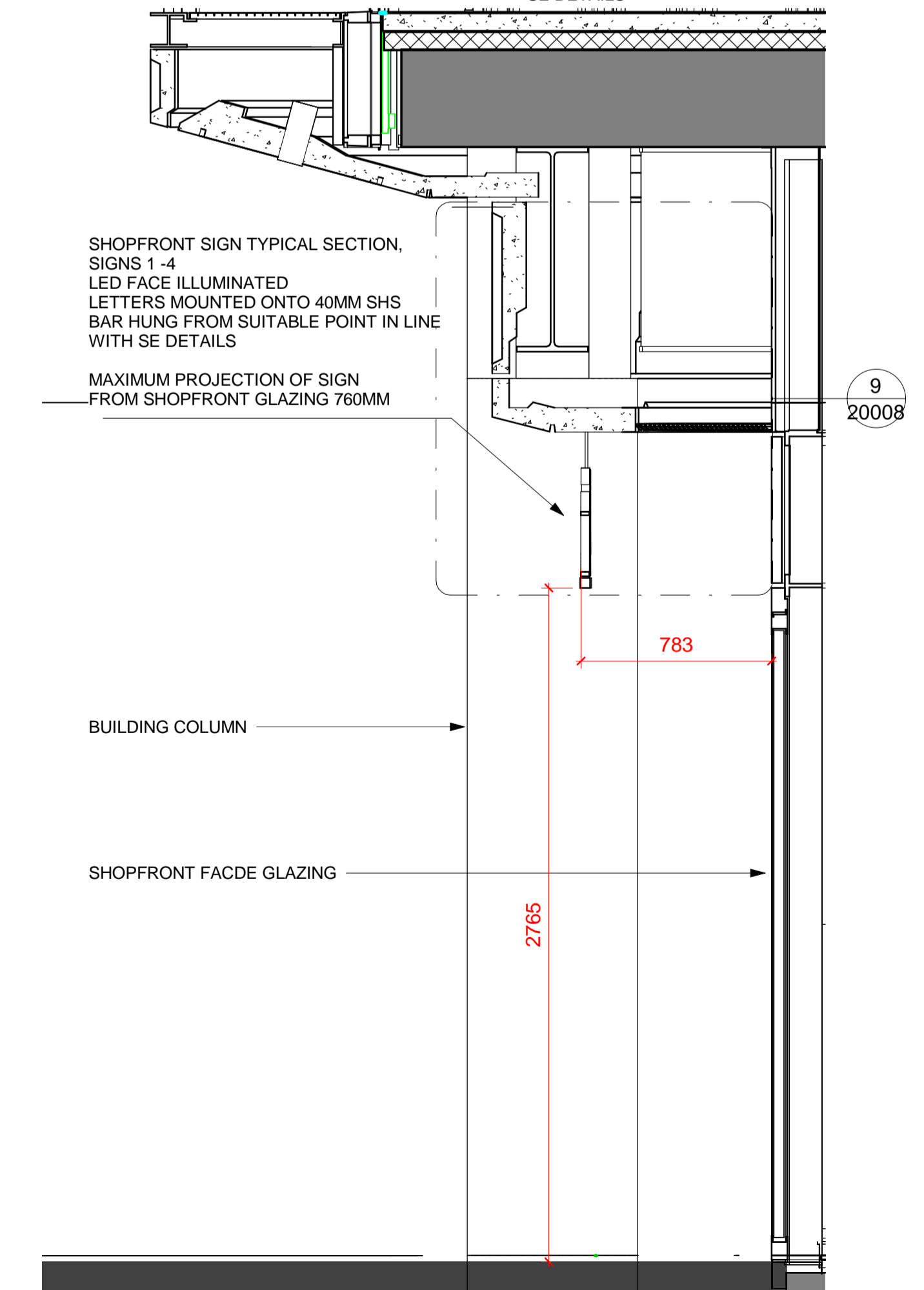
2 SIGN 2 ELEVATION
1 : 20



3 SIGN 3 ELEVATION
1 : 20

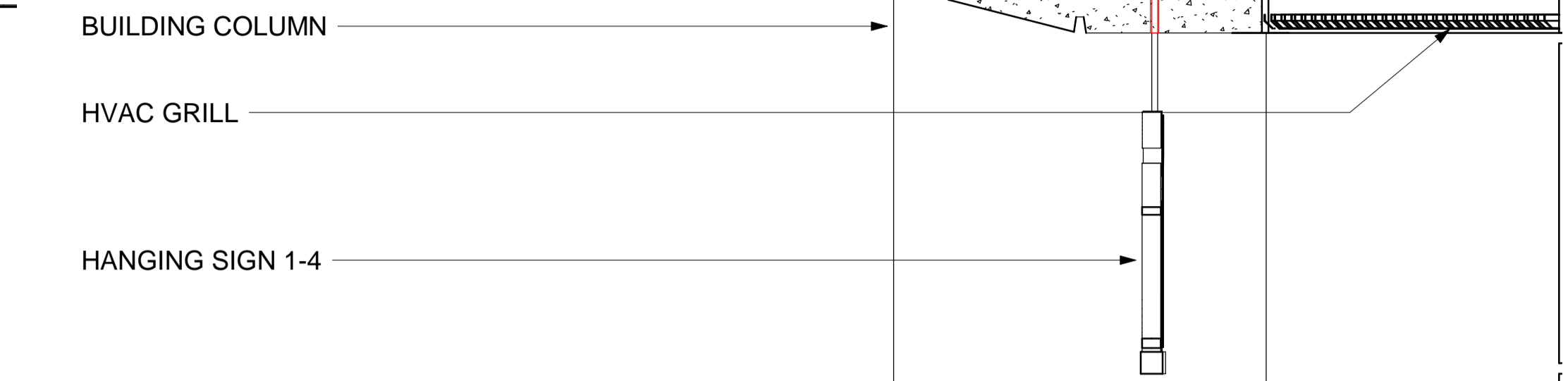


4 SIGN 4 ELEVATION
1 : 20



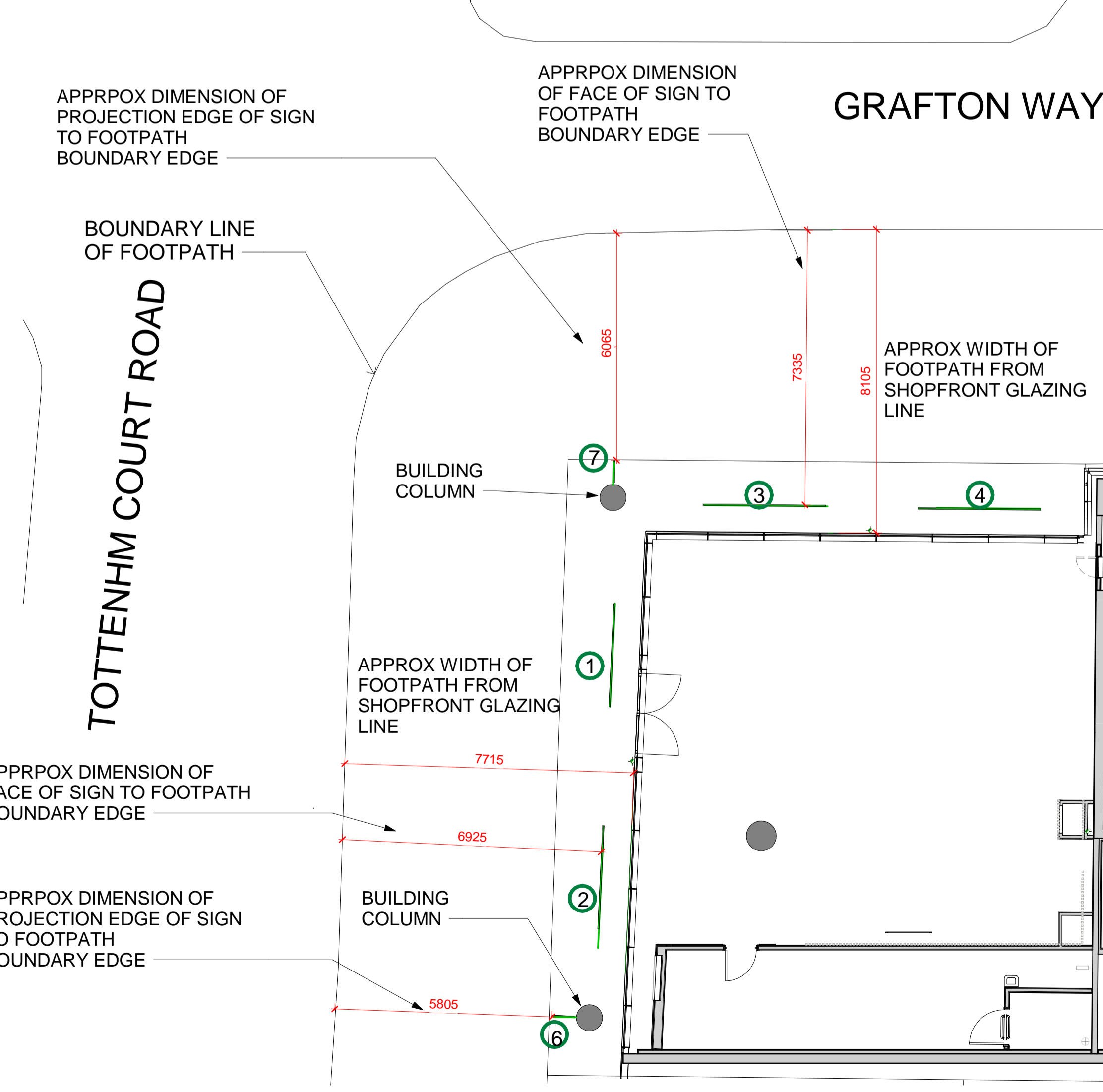
8 SHOPFRONT SIGN SECTION
1 : 20

SHOPFRONT SIGN TYPICAL SECTION,
SIGNS 1 - 4
SIGNAGE SYSTEM TO BE FIXED TO EXISTING
STEELWORK STRUCTURE VIA M12 THREADED ROD WITH
PPC ALU (RAL 9005) SHEATH. HOLES TO BE FORMED IN
GRC CLADDING PANELS TO ALLOW FIXING ABOVE,
ACCESS THROUGH ADJACENT
REMOVABLE HVAC GRILLES. ALL DETAILS IN LINE WITH
SE DETAILS.



9 SHOPFRONT SIGN 1-4 SECTION FIXING DETAIL
1 : 10

10 SIGN 6&7 FIXING DETAILS
1 : 15



5 PROPOSED GROUND FLOOR GA PLAN
1 : 100

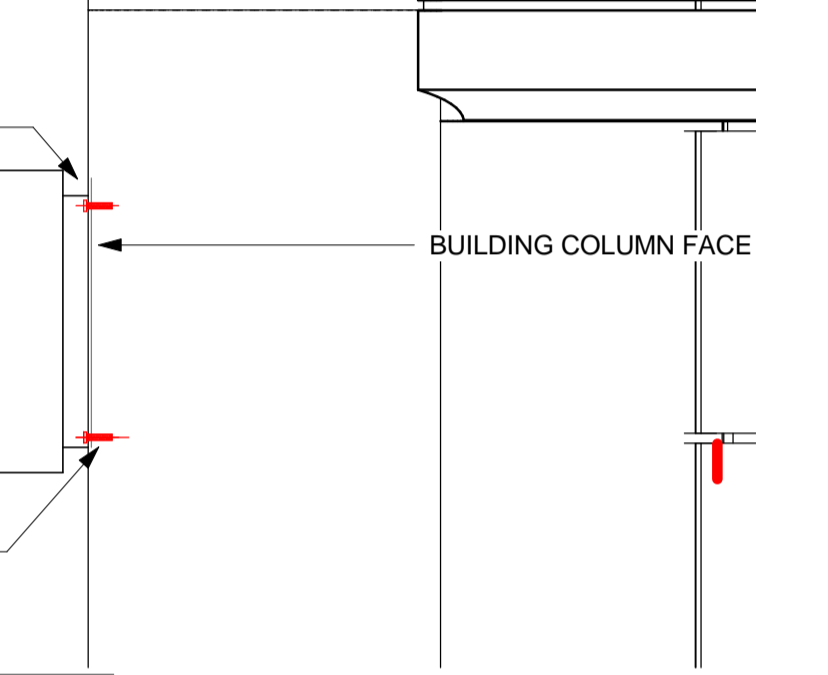
THIS DRAWING IS COPYRIGHT OF BROOKER FLYNN ARCHITECTS LTD AND MAY NOT BE REPRODUCED IN ANY FORM OR TRANSFERRED TO OTHER PARTIES BY ELECTRONIC MEANS WITHOUT PRIOR WRITTEN CONSENT. NO DIMENSIONS TO BE SCALED FROM THIS DRAWING.

SINAGE DETAILS
30mm HOGGED OUT PERSPEX 1T77 OPAL LETTERS,
5mm ALI BACK TRAYS.
BLOCK OUT VINYL TO THE RETURNS REF TBC.
LED FOR FACE ILLUMINATION.
LETTERS TO HAVE A 3m FOLDED ALI SUPPORT
WITH 90 DEGREE FOLD TO MOUNT TO EXISTING PLYNTH.
3mm BACKERS COATED TO RAL 9005 MATT BLACK.
ALL ON 40MM SHS BAR PPC COATED TO RAL 9005.
HUNG FROM SUITABLE POINT IN LINE WITH SE DETAILS,
ON M10 THREADED ROD WITH RAL 9005 SHEATHING

LETTERS TO BE SUPPLIED WITH 3M OF CABLE
ALL CABLE TO BE LOW SMOKE AND FUME

BUS STOP SIGN 6
SIGN TO BE WHITE FACE AND EDGES, DEPTH 100MM,
HALO ILLUMINATED BLACK LETTERS-10M BLACK ACRYLIC-
POLISHED EDGES, 3MM OPAL 030 PERSPEX ON 3MM
030 PERSPEX BACKING
DEPTH 100MM, LETTERS LAZER CUT PUSHED THROUGH,
14 GAUGE ALI PANELS FINISHED WHITE RAL 9003
40% GLOSS MATT WHITE INTERNAL FINISH
INTERNAL MILD STEEL BOX SECTION FRAME

BUS STOP SIGN 7
SIGN TO BE ULTRAMARINE BLUE FACE AND BLACK EDGES,
DEPTH 100MM,
HALO ILLUMINATED WHITE LETTERS-10M WHITE ACRYLIC-
POLISHED EDGES, 3MM OPAL 030 PERSPEX ON 3MM
030 PERSPEX BACKING
DEPTH 100MM, LETTERS LAZER CUT PUSHED THROUGH,
14 GAUGE ALI PANELS FINISHED ULTRAMARINE BLUE RAL 5002
40% GLOSS MATT BLUE INTERNAL FINISH
INTERNAL MILD STEEL BOX SECTION FRAME
(ILLUMINATION STATIC INTERNAL NOT MORE THAN 400Cd/m2)



REV	DATE	DESCRIPTION	DRAWN	CHECKED
02	30.12.21	AMMENDMENTS TO EXTERNAL PROJECTING SIGNAGE ISSUED TO QUADRANT BUILDING CONTROL FOR QUOTE	RJT	RJT
01	25.11.21			



STORE NAME
WHS-M&S-UCLH
COUNTRY
UK

PROJECT
UCLH-WHS-M&S-SHOP-IN-SHOP

PROPOSED SHOPFRONT SIGNAGE

CONSULTANT
BROOKER FLYNN ARCHITECTS
DISCIPLINE DESCRIPTION
ARCHITECTURE
CONSULTANT LOGO



SCALE	PAPER SIZE	DATE	DRAWN	CHECKED
As indicated	A1	11/12/21	RJTGB	
STORE NUMBER	PROJECT No	DISCIPLINE CODE	DRAWING No	
			20008	
CONSULTANT PROJECT No	STATUS		REV	
21.1085			DD02	